

1950-51
VICTORIA

REPORT
OF
STATE ELECTRICITY COMMISSION
OF VICTORIA
ON
THE FINAL PHASE
OF
THE RURAL
ELECTRIFICATION OF THE
STATE

Presented to both Houses of Parliament by His Excellency's Command

TABLE OF CONTENTS

| | |
|--|------|
| | Page |
| Report on the final phase of the rural electrification of the State | 5-9 |
| (Summary Page 9) | |

APPENDICES

| | |
|---|-------|
| No. 1 — Map of Victoria showing State Supply System and the Developmental Plan | |
| No. 2 — Electricity Supply — Number of Dwellings to be served under Developmental Plan 1951-1961 and number of dwellings without supply | 11 |
| No. 3 — Local Undertakings to be acquired as part of the Developmental Plan | 11 |
| No. 4 — Localities to be supplied as part of the Developmental Plan | 12-16 |
| No. 5 — Standard Tariffs as at 1st July, 1951 | 17 |
| No. 6 — Existing Electricity Supply Undertakings — Municipal and Private | 18-21 |
| No. 7 — Metropolitan Municipal Undertakings served in bulk by S.E.C. — Financial Results 1941-1950 | 22 |

STATE ELECTRICITY COMMISSION OF VICTORIA

REPORT ON THE FINAL PHASE OF THE RURAL ELECTRIFICATION OF THE STATE

The Honourable K. Dodgshun,
Minister in Charge of Electrical Undertakings,
Old Treasury Building,
MELBOURNE, C.I.

Sir,

1. In accordance with its legislative responsibilities for the ultimate co-ordination and unification of electricity supply in Victoria, the Commission has presented to the Government from time to time projects for the development of power generation, and for the extension of the State transmission and distribution systems.

2. This report deals with the steps to be taken by the Commission, with the approval of the Government, to carry out what is virtually the final stage in the electrification of rural Victoria, i.e., the extension of supply to every dwelling in the State, except for those in the most remote parts; these latter are estimated to total some 15,000 dwellings.

3. After three decades of active work by the Commission, 83% (487,000) of the dwellings in Victoria are supplied with electricity from public supply mains. Outside the metropolitan area there are 239,000 occupied dwellings, and notwithstanding the severe setbacks of the 1930-1934 world recession and the 1939-1945 world war and its aftermath, already 164,000 (69%) of these dwellings now have a supply of electricity. Thus, in numbers, over two-thirds of the task has been completed, which provides a very substantial foundation for the final stage of electrification in rural Victoria. Except for those in the sparsely settled remote areas, the work of connecting the remaining 75,000 existing homes present no greater obstacles than have been surmounted already for, since the depression, the attitude of farmers and others towards rural electrification has changed from sheer indifference to a clamour for electricity as a right.

4. At the present time, the Commission is connecting up consumers at the rate of 25,000 per annum, and of this number 16,500 (or 67%) are located outside the metropolis. To achieve this more than 90% of the available construction materials has been devoted to country work. The 16,500 consumers connected in country areas compares more than favourably with the highest pre-war figure of 7,000 new country consumers in 1938. The following table shows the progress made in post-war years as compared with pre-war:—

| Year ended 30th June | New Consumers Connected | | | |
|------------------------------------|-------------------------|-------------------|---------------------------|-------|
| | Total | Metropolitan Area | Outside Metropolitan Area | Farms |
| 1947 | 17,655 | 4,426 (25%) | 13,229 (75%) | 1,471 |
| 1948 | 15,972 | 5,657 (35%) | 10,315 (65%) | 1,340 |
| 1949 | 16,877 | 6,104 (36%) | 10,773 (64%) | 1,238 |
| 1950 | 18,870 | 6,380 (34%) | 12,490 (66%) | 1,322 |
| 1951 | 24,677 | 8,156 (33%) | 16,521 (67%) | 1,831 |
| Average — 4 years prior to the war | 11,766 | 6,100 (52%) | 5,667 (48%) | 748 |

5. As a preliminary to planning the extension of the State electricity supply system to some of those areas that have not yet been covered by main H.V. feeder lines, the Commission, towards the close of the war period, made a comprehensive power survey in the four main regions of Victoria not yet covered by the State system, viz:—

- (i) Mildura and district.
- (ii) The North West Region—the area Bendigo to Swan Hill, Nyah and Sea Lake in the north, Gunbower in the east, and Donald in the west.
- (iii) The Wimmera Region—the area lying west of Ballarat, as far as Serviceton in the west, Horsham in the south, and Patchewollock in the north.
- (iv) The Glenelg Region—the area lying to the west of Port Fairy, as far as the South Australian border opposite Mount Gambier, Portland in the south and Edenhope in the north.

This survey showed that the Commission should make its developmental plans on the basis of supplying a total of 35,000 consumers in these four regions.

Government action already has taken place with regard to Mildura, because certain pumping requirements of the State Rivers and Water Supply Commission and the First Mildura Irrigation Trust had to be met before 1954. This Commission has finalised agreements with the State Rivers and Water Supply Commission and the First Mildura Irrigation Trust to supply electricity at a scale of charges satisfactory to those bodies, and negotiations are in course with the Mildura City Council for the acquisition of its undertaking by the Commission.

6. Both the Mildura requirements and the Valley of the Murray are to be served by a 220,000 volt transmission line from Kiewa to Mildura, via Shepparton and the Murray Valley, operated in conjunction with peak load stations at Shepparton, Swan Hill and Mildura. Although the line will not be completed before 1958, the first units of the Shepparton peak load station already are in operation. Until the construction of the Kiewa-Mildura transmission line, regional stations to be erected at Swan Hill and Mildura will progressively meet the requirements of the surrounding districts. Steps have been taken to procure generating plant for these two stations—in the case of Swan Hill, by the municipality. (The Commission's report to the Government on the Murray Valley regional scheme was approved in August, 1950.)

7. In keeping with the approved main Murray Valley scheme, a detailed plan has been prepared for the north west area, embracing the Kerang-Cohuna-Gunbower area; and a similar detailed investigation is in hand for the Wimmera region.

8. The next and final stage of the Commission's planning is recorded on the annexed map—called, for convenience, the Developmental Plan. It covers supply to new consumers in existing extra-metropolitan branches and adjacent areas, and the extension of electricity supply into the four new regions, namely, Mildura, Wimmera, North West and Glenelg.

Under this plan, the existing 66,000 volt lines will be extended by stages from a convenient point, e.g., from Ballarat towards Horsham and from Warnambool to Heywood for Portland. The tentative routes for these lines are recorded on the map (Appendix No. 1).

9. It is assumed that materials will be available to complete the developmental plan in ten years. During this decade, some 142,000 homes in extra-metropolitan areas would be connected to the State supply system, as follows:—

| | |
|---|----------------|
| Number of existing homes without supply | 75,000 |
| Plus new homes to be erected during the next ten years, say | 60,000 |
| Plus homes already receiving supply from local undertakings to be acquired | 22,000 |
| | <hr/> |
| | 157,000 |
| Less homes in sparsely populated remote areas which cannot economically be supplied | 15,000 |
| | <hr/> |
| | <u>142,000</u> |

There also will be 36,000 or more commercial and industrial consumers, bringing the total number of consumers to be connected in extra-metropolitan areas to not less than 178,000. For further details see Appendix No. 2.

About 650 localities have been specifically listed in Appendix No. 4 as part of the plan, because of their relative significance; there are approximately another 600 smaller localities which have not been listed.

10. The Developmental Plan covers a ten-year period from the 1st July, 1951, and all estimates are as at that date: the following financial estimates would vary substantially if the current upward trend in wage and material costs continues:—

- (a) The capital cost of the necessary works to supply the 178,000 extra-metropolitan consumers to be connected under the plan would be approximately £38,000,000 (excluding the cost of the Murray Valley extension for which an expenditure of £7,000,000 was approved in August, 1950).
- (b) 100 MW would be required to meet the additional load on the Branch transmission systems.
- (c) Notwithstanding the high cost of extending supply to remote dwellings and farms, the cost of electricity would average 4.1d. per kilowatt-hour (at the terminals of the 178,000 consumers included in the plan). Although slightly above the present cost for consumers of existing local undertakings (3.9d.), it compares more than favourably as for the most part their service does not extend beyond towns and settled areas. Except for the cities and a few larger towns, the average rate of local undertakings ranges from 5d. to 1/6d. per kilowatt-hour.

(The estimate of 4.1d. per kilowatt-hour would be reduced to the extent to which the cost of supplying sparsely populated farming and outback areas may be subsidised—see recommendations later in this report.)

11. On completion of the plan, there may be 15,000 dwellings outside the metropolitan area which have not been connected to the State electricity system. These homes will be in the most remote parts of Victoria, but investigations will be continued to ascertain what can be done for this group.

In this report “dwellings” include farm dwellings, but the number of farm dwellings in Victoria is not known exactly and therefore a census to determine this is being carried out, in co-operation with the local government authorities.

12. All municipal and private electricity supply undertakings (metropolitan and country) operating under Order in Council at the 30th June, 1951, and the tariffs charged by each, are listed in Appendix No. 6. The 48 country undertakings to be acquired as part of the plan are given in Appendix No. 2.

In common with practically all electricity supply authorities in Australia, their plant problems under today's conditions are becoming increasingly difficult. The Commission has assisted several of these undertakings by hiring of plant: however, the only practicable and permanent solution of their problems is the implementation of the Development Plan. In the meantime, as the plan progresses and some of these undertakings are acquired, suitable generating plant will become available for transfer to relieve the position elsewhere.

13. Since the war, the rate of progress in the construction of rural extensions has proceeded to the maximum possible extent of available materials. Local manufacturers have been able to supply but a small portion of requirements, and large-scale orders have had to be placed overseas at costs substantially above Australian prices. Local manufacturers have been encouraged to expand their production, but it is apparent that the Commission will be dependent on considerable quantities of overseas materials and equipment—at least during the first few years of the Developmental Plan.

The expeditious and economical erection of all distribution assets involved has called for special organisation and the use of the most up-to-date mechanical aids on as large a scale as is practicable; training schools for technicians to augment construction gangs and other personnel have been established.

14. The existing electricity supply tariffs fall into three groups—

- (a) metropolitan;
- (b) provincial cities and large towns;
- (c) smaller towns and rural areas.

(See Appendix No. 5 — Charges as from 1st July, 1951.)

With the Commission rests the responsibility of meeting from its own revenues, the costs of producing, transmitting and distributing electricity: for many years it has adopted the practice of pooling main generation and transmission costs, to the extent that each of its ten supply branches obtains electricity from the “pool” at the same price. This practice has meant a considerable advantage to consumers in the rural branches. Also, over recent years losses in rural branches have been subsidised by revenues from the Commission's Metropolitan Branch: the loss sustained by country branches for 1948/49 was £130,000, and for 1949/50 £138,000.

15. Thus, through its tariff structure, the Commission is able to relieve and aid considerably the rural consumer. From time to time the extent to which this is possible will, of necessity, be reviewed, but at this juncture the Commission—after careful consideration—sees no reason to change the advice it gave the Government in its 1945 report on future country electrical development, the substance of which was that the Commission should be encouraged to continue the long-established policy of relying on its own financial resources in order to press on with the arrears of country electrical development, taking as its chief objective the extension of electricity service to the majority of those country homes at present without electricity.

16. In the same report, the Commission emphasised that there is an important direction in which the Government could assist greatly in facilitating country electrical development, i.e., by extending financial aid to prospective consumers in respect of service lines for connection from the Commission's mains to the consumer's premises: this would be of material benefit to occupiers of large farms in remote country areas. The cost of these lines is at present borne by consumers, except for the first 60 feet in each case.

17. During and since the war, the Commission has transferred sums totalling £1,200,000 to a Rural Development Reserve, which it is proposed to use for those rural extensions not self-supporting.

18. The Commission has often pointed out the obvious—that, as rural extensions reach the more remote areas, it is inevitable that the cost of supply will progressively increase. As to consumers in the new major supply areas, the aim will be the supply to urban and town areas at tariffs framed to meet the costs, leaving the Commission to provide, by subvention from established areas, a subsidy for further development of the more remote areas in the new regions.

19. In this important task, having in mind particularly the burden of finance unavoidably associated with rural development, the Commission should be fortified by the transfer of the metropolitan municipal undertakings to its ownership. This step, which is essential to complete co-ordination of the State's supply system, is a corollary to the Commission's ten-year planned programme of rural development which, as stated earlier, includes the acquisition by the State Electricity Commission of Victoria of 48 country electricity supply authorities. It could not be separated from such obligations for subvention as have to be accepted to assure financial soundness for this rural development plan.

In its report to the Government in 1945, the Commission emphasised that the final stage of the State's policy of unification of Victorian electricity supply involved, in addition to the acceleration of rural development, this question of the transfer to State ownership of the ten metropolitan undertakings now served in bulk by the State system. The Commission repeats its 1945 advice on this problem:—

“The solution of the metropolitan problem appears to rest on an arrangement along the lines of the purchase arrangements for the Melbourne Electric Supply Company Ltd. (Melbourne and Geelong), and the Electric Supply Company of Victoria (Ballarat and Bendigo). It could provide for all the transfers of ownership to be completed in ten years. Each undertaking could be acquired in turn, according to the influence of the change on its municipal rates. The minimum and maximum ‘agency’ periods might be two and ten years respectively. Such an arrangement might even be negotiated amicably, subject to ratification by Parliament, if the Government were to make a suitable declaration of policy as the background for such negotiations.”

20. As the financial burden of extending electricity supply to the remote rural areas will progressively increase, it is vital to the satisfactory completion of this Developmental Plan that all the resources of electricity supply in Victoria should be co-ordinated and consolidated so that the maximum aid practicable by subvention from the established and populated areas is available.

During the last ten years, the profits from the metropolitan municipal undertakings have averaged £330,000 per annum (£340,000 for 1950); further details of the financial operations of these undertakings are set out in Appendix No. 7. Most of these profits have been transferred to municipal funds for works other than electricity supply; the transfer of the undertakings to Commission ownership would ensure the maximum aid for the completion of rural electrification in Victoria, and an equitable sharing of the financial burden involved.

SUMMARY

This Developmental Plan provides for the final stages of rural electrification in Victoria, and is to be completed within ten years. During this time—

- (a) 178,000 consumers will be connected in areas outside the metropolis at a rate which will be limited only by the availability of necessary manpower and materials: of this number only 22,000 homes are at present receiving supply from local undertakings;
- (b) in the course of the plan, 48 local undertakings in country areas will be acquired and supply will be extended to about 650 centres and other small settlements not at present having electricity available from public mains.

It is anticipated that, on the completion of the plan, there will remain without supply 15,000 homes in the most isolated parts of the State, but every effort will be made to include as many as possible in the plan.

The capital cost of the plan, including the Murray Valley project, is estimated at approximately £45,000,000. Based on present cost levels, it is estimated that the cost of delivering electricity to the 178,000 new extra-metropolitan consumers will average 4.1d. per kilowatt-hour.

The Commission would rely on its own financial resources in undertaking the plan. Tariffs would be framed to supply new urban and larger town areas at cost, leaving the Commission to provide by subvention from established areas a subsidy for the further development of the more remote areas in the new regions.

The Government could assist rural development greatly by extending financial aid in respect of service lines for connection from the Commission's mains to the consumer's premises: the cost of these lines is at present borne by consumers, except for the first 60 feet in each case.

The Commission has aided and is continuing to aid rural supplies financially by the pooling of main generation and transmission costs, and in other ways.

In meeting this financial burden, it is important that the Commission be fortified by the transfer to its ownership of the metropolitan municipal undertakings, which should not be separated from such obligations. This step would complete the co-ordination of the State's supply system in accordance with the obligations placed on the Commission at its inception by Parliament.

CONCLUSION

The Commission's important objective is to make available a service of electricity at the earliest practicable date to those country residents who have as yet been denied the benefits and conveniences of supply.

In submitting this Developmental Plan, the Commission desires it to be clearly understood that no effort is being spared to accelerate the rate of progress in the actual construction of the distribution and transmission assets which will serve new supply areas. Last year 90% of materials available were used for supply extensions in extra-metropolitan areas.

The only limiting factor today is the shortage of materials vital to this purpose, but, as you know, urgent special measures have been taken in an endeavour to overcome this problem by procurement from overseas, which has necessitated, for certain basic materials, your Government's approach to the Commonwealth in an endeavour to augment supplies.

Despite this limitation, attainment during the last twelve months has been considerable. 16,500 new consumers were connected in areas outside the metropolis: a 32% increase on the previous year and approximately three times the number in pre-war years. A further acceleration in the rate of construction is under way, and with reasonable augmentation of resources and freedom from the effects of any major crises, the objectives of the Developmental Plan should be achieved.

We have the honour to be, Sir, your obedient servants.

R. A. HUNT, Chairman.

ANDREW W. FAIRLEY, Commissioner.

W. D. CHAPMAN, Commissioner.

A. W. HENDERSON, Commissioner.

D. H. MUNRO,
Secretary,

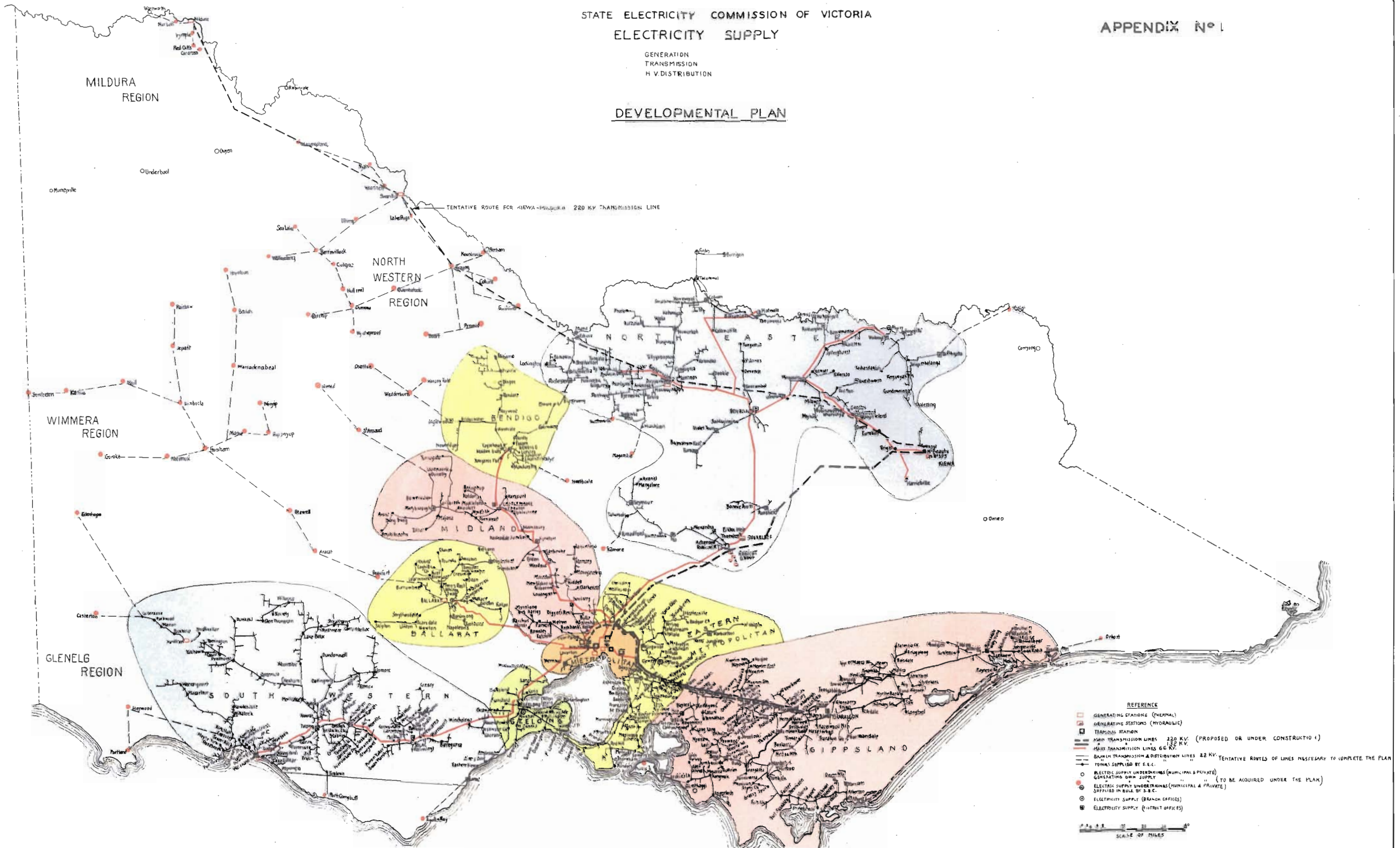
31st August, 1951.

STATE ELECTRICITY COMMISSION OF VICTORIA ELECTRICITY SUPPLY

GENERATION
TRANSMISSION
H.V. DISTRIBUTION

DEVELOPMENTAL PLAN

APPENDIX No 1



State Electricity Commission of Victoria
ELECTRICITY SUPPLY TO DWELLINGS – 1951-1961

| Area | Total Number of Dwellings | | Dwellings Served by Electricity | | | | Unserved Dwellings | | | |
|-------------------------|---------------------------|----------------|---------------------------------|----------------------|----------------|----------------------|--------------------|----------------------|---------------|----------------------|
| | 1951 | 1961 | 1951 | | 1961 | | 1951 | | 1961 | |
| | | | No. | % of Total Dwellings | No. | % of Total Dwellings | No. | % of Total Dwellings | No. | % of Total Dwellings |
| Metropolitan area | 346,000 | 475,000 | 323,000 | 93 | 473,000 | 99.6 | 23,000 | 7 | 2,000 | 0.4 |
| Extra-Metropolitan area | 239,000 | 299,000 | 164,000 | 69 | 284,000 | 95 | 75,000 | 31 | 15,000 | 5 |
| Totals | 585,000 | 774,000 | 487,000 | 83 | 757,000 | 98 | 98,000 | 17 | 17,000 | 2 |

DWELLINGS WITHOUT SUPPLY IN THE EXTRA-METROPOLITAN AREA – 1951 - 1961

| Locality | Dwellings without supply in 1951 | New Dwellings Erected 1951-1961 | Dwellings Connected 1951-1961 | Dwellings without supply in 1961 |
|--|----------------------------------|---------------------------------|-------------------------------|----------------------------------|
| In areas related to independent supply authorities | 14,000 | 8,000 | 21,000 | 1,000 |
| Within five miles of the State system | 37,000 | 36,000 | 71,000 | 2,000 |
| In areas related to regional schemes | 18,000 | 12,000 | 20,000 | 10,000 |
| In areas more than five miles from the State system and not in areas related to independent supply authorities or regional schemes | 6,000 | 4,000 | 8,000 | 2,000 |
| Totals | 75,000 | 60,000 | 120,000 | 15,000 |

**LOCAL UNDERTAKINGS (48) TO BE ACQUIRED
DURING DEVELOPMENTAL PLAN**

| Undertaking | Undertaking |
|-----------------------|------------------------|
| Apollo Bay | Manangatang |
| Ararat | Mildura |
| Beaufort | Minyip |
| Beulah | Murtoa |
| Birchip | Nagambie |
| Boort | Natimuk |
| Casterton | Nhill |
| Charlton | Orbost |
| Cohuna | Port Campbell |
| Cowes | Portland |
| Dimboola | Pyramid |
| Donald | Quambatook |
| Doncaster-Templestowe | Rainbow |
| Edenhope | Rupanyup |
| Goroke | Rushworth |
| Gunbower | St. Arnaud |
| Heathcote | Serviceton |
| Heywood | Stawell |
| Hopetoun | Swan Hill Area |
| Horsham | Walwa |
| Jeparit | Warracknabeal |
| Kaniva | Wedderburn-Korong Vale |
| Kerang-Koondrook | Woomelang |
| Kilmore | Wycheproof-Sealake |

State Electricity Commission of Victoria

DEVELOPMENTAL PLAN

This list sets out the names of nearly 650 localities which have been specifically listed in the plan because of their relative significance having regard to population and industry. There are, however, approximately 600 other localities which have not been specifically listed, but which nevertheless come within the ambit of the plan.

Legend—

| | | | | | |
|--------|---|-----------------------|------|---|----------------------|
| Ball. | — | Ballarat Branch | Mid. | — | Midland Branch |
| Bend. | — | Bendigo Branch | N/E. | — | North Eastern Branch |
| E/M. | — | Eastern Metro. Branch | N/W. | — | North Western Region |
| Geel. | — | Geelong Branch | S/W. | — | South Western Region |
| Gipps. | — | Gippsland Branch | W. | — | Wimmera Region |
| Glen. | — | Glenelg Region | | | |

*Possible acquisition of local undertakings at these centres.

| Centre | Branch or Region | Centre | Branch or Region |
|----------------|------------------------|-------------------|------------------------|
| Allan's Flat | N/E. | Bet Bet | Mid. |
| Almurta | Gipps. | Bethanga | N/E. |
| Amherst | Mid. | Betley | Mid. |
| Anakie | Geel. | Beulah* | W. |
| Anderson | Gipps. | Beveridge | E/M. |
| Angleside | N/E. | Binginwarri | Gipps. |
| Apollo Bay* | S/W. | Birchip* | N/W. |
| Ararat* | Ball. | Blackwarry | Gipps. |
| Arawata | Gipps. | Blackwood | Mid. |
| Arcadia | N/E. | Blackwood Forest | Gipps. |
| Ardgarton | Glen. | Blakeville | Ball. |
| Ardno | Glen. | Boho | N/E. |
| Armstrong | Ball. | Bolinda | Mid. |
| Arthur's Creek | E/M. | Bolga | N/E. |
| Ashbourne | Mid. | Bolwarrah | Ball. |
| Athlone | Gipps. | Boneo | E/M. |
| Avonmore | Bend. | Boorhaman | N/E. |
| Avonsleigh | E/M. | Boorolite | N/E. |
| Awonga | Glen. | Boort* | N/W. |
| Axedale | Bend. | Boosey | N/E. |
| Ayreford | S/W. | Boundary Bend | N/W. |
| | | Boys | Gipps. |
| Ballangeich | S/W. | Branxholme | Glen. |
| Balliang | Geel. | Brewster | Ball. |
| Balmoral | Glen. | Brimboal | Glen. |
| Balnarring | E/M. | Brit Brit | Glen. |
| Bamganie | Geel. | Broadwater | Glen. |
| Bangholme | E/M. | Brodribb River | Gipps. |
| Bannockburn | Geel. | Brown's Plains | N/E. |
| Barfold | Mid. | Bruarong | N/E. |
| Bargallah | Glen. | Brucknell | S/W. |
| Barjarg | N/E. | Bruthen Creek | Gipps. |
| Barkly | Mid. | Buangor | Ball. |
| Barmah | N/E. | Buckland | N/E. |
| Barongarook | S/W. | Buckley's Swamp | Glen. |
| Barramunga | S/W. | Budgerie | Gipps. |
| Barry's Reef | Mid. | Buffalo | Gipps. |
| Barwidgee | N/E. | Bulart | Glen. |
| Barwon Downs | S/W. | Bullengarook | Mid. |
| Bass | Gipps. | Bullengarook East | Mid. |
| Baulkamaugh | N/E. | Buln Buln East | Gipps. |
| Baynton | Mid. | Bunbartha | N/E. |
| Bealiba | Mid. | Bundalong | N/E. |
| Beaufort* | Ball. | Bungador | S/W. |
| Beech Forest | S/W. | Buttlejork | Mid. |
| Beenak | E/M. | Buxton | N/E. |
| Belgrave South | E/M. | Byaduk North | Glen. |
| Benlock | Mid. | Bylands | N/E. |
| Berringa | Ball. | | |
| Berrybank | S/W. | Callignee | Gipps. |
| Berry's Creek | Gipps. | Callignee North | Gipps. |
| Bessie Belle | Glen. | Callignee South | Gipps. |
| | | Calulu | Gipps. |

| Centre | Branch or Region | Centre | Branch or Region |
|-------------------|------------------------|------------------|------------------------|
| Campbelltown | Mid. | Drouin South | Gipps. |
| Camp Corner | Glen. | Drumanure | N/E. |
| Caniambo | N/E. | Drummond | Mid. |
| Cape Clear | Ball. | Dunach | Mid. |
| Cape Otway | S/W. | Dunbulbalane | N/E. |
| Cape Schanck | E/M. | Dunluce | Mid. |
| Carboor | N/E. | Durham Lead | Ball. |
| Cardinia | Gipps. | Duverney | S/W. |
| Carlisle River | S/W. | | |
| Carngham | Ball. | Ebden | N/E. |
| Carpendeit | S/W. | Echuca North | N/E. |
| Carrajung | Gipps. | Eddington | Mid. |
| Carrajung South | Gipps. | Edenhope* | Glen. |
| Casterton* | Glen. | Eden Park | E/M. |
| Cathkin | N/E. | Edgecombe | Mid. |
| Cavendish | Glen. | Edi | N/E. |
| Chapplevale | S/W. | Egerton | Ball. |
| Charam | Glen. | Elaine | Ball. |
| Charleroi | N/E. | Elingamite | S/W. |
| Charlton* | N/W. | Ellerslie | S/W. |
| Chatsworth | S/W. | Elmhurst | Mid. |
| Cherokee | Mid. | Eltham North | E/M. |
| Cheshunt | N/E. | Emberton | Mid. |
| Chetwynd | Glen. | Englefield | Glen. |
| Cheviot | N/E. | Erica | Gipps. |
| Childers | Gipps. | Eskdale | N/E. |
| Chiltern Valley | N/E. | Eurack | S/W. |
| Clarendon | Ball. | Eurambeen | Ball. |
| Clydesdale | Mid. | Eversley | Mid. |
| Coalville | Gipps. | | |
| Cobaw | Mid. | Fairy Dell | E/M. |
| Cockatoo | E/M. | Fenwick | Geel. |
| Codrington | S/W. | Ferguson | S/W. |
| Cohuna* | N/W. | Fernbank | Gipps. |
| Coimadai | Mid. | Ferndale | Gipps. |
| Colbinabbinn | N/E. | Fern Hill | Mid. |
| Coliban | Mid. | Flowerdale | N/E. |
| Connewirrecoo | Glen. | Forrest | S/W. |
| Coojar | Glen. | Fosterville | Bend. |
| Coongulmerang | Gipps. | Foxhow | S/W. |
| Corangamite | S/W. | Framlingham | S/W. |
| Corindhap | S/W. | Franklinford | Mid. |
| Corop | N/E. | Fryerstown | Mid. |
| Cosgrove | N/E. | Fulham | Glen. |
| Cowes* | Gipps. | | |
| Cowley's Creek | S/W. | Gatum | Glen. |
| Corinella | Gipps. | Gellibrand River | S/W. |
| Craigie | Mid. | Gembrook | E/M. |
| Creighton's Creek | N/E. | Gerangamete | S/W. |
| Crowes | S/W. | Gladysdale | E/M. |
| Crowlands | Mid. | Glenaladale | Gipps. |
| Cundare North | S/W. | Glen Aire | S/W. |
| | | Glen Brae | Ball. |
| Dalmore East | Gipps. | Glenburn | N/E. |
| Darraweit Guim | Mid. | Glendaruel | Ball. |
| Dartmore | Glen. | Glen Fyne | S/W. |
| Dean's Marsh | S/W. | Glenisla | Glen. |
| Delburn | Gipps. | Glenlogie | Mid. |
| Denison | Gipps. | Glenluce | Mid. |
| Derby | Bend. | Glenlyon | Ball. |
| Dergholm | Glen. | Glenmaggie | Gipps. |
| Devonsdale | S/W. | Glenorchy | Ball. |
| Devon Meadows | E/M. | Glenpatrick | Mid. |
| Digby | Glen. | Gnarkeet | S/W. |
| Diggora | Bend. | Golden Point | Mid. |
| Dimboola* | W. | Goldie | Mid. |
| Dixon's Creek | E/M. | Goroke* | W. |
| Docker | N/E. | Gould | Gipps. |
| Dollar | Gipps. | Grantville | Gipps. |
| Donald* | N/W. | Grassdale | Glen. |
| Dondangadale | N/E. | Grassmere | S/W. |
| Doreen | E/M. | Great Western | Ball. |
| Drik Drik | Glen. | Greendale | Mid. |
| | | Green Gully | Mid. |

| Centre | Branch or Region | Centre | Branch or Region |
|--------------------|------------------------|------------------|------------------------|
| Green Hill | Mid. | Laang | S/W. |
| Greenwald | Glen. | Labertouche | Gipps. |
| Grenville | Ball. | Lake Charm | N/W. |
| Greta | N/E. | Lake Goldsmith | Ball. |
| Gringe | Glen. | Lake Moodermere | N/E. |
| Gritjurk | Glen. | Lake Mundi | Glen. |
| Gruyere | E/M. | Lake Rowan | N/E. |
| Gunbower* | N/W. | Landsborough | Mid. |
| | | Langkoop | Glen. |
| Haddon | Ball. | Langley | Mid. |
| Hall's Gap | Ball. | Lauriston | Mid. |
| Hallston | Gipps. | Lavers Hill | S/W. |
| Hansonville | N/E. | Lawrence | Ball. |
| Happy Valley | Ball. | Leitchville | N/W. |
| Harrow | Glen. | Le Roy | Gipps. |
| Harston | N/E. | Leslie Manor | S/W. |
| Hazel Park | Gipps. | Lethbridge | Geel. |
| Hazelwood South | Gipps. | Lexton | Ball. |
| Heathcote* | Bend. | Limestone | N/E. |
| Heath Hill | Gipps. | Limonite | Gipps. |
| Hesket | Mid. | Little Hampton | Mid. |
| Heywood* | Glen. | Llowlalong | Gipps. |
| Hiawatha | Gipps. | Londrigan | N/E. |
| Hillend | Gipps. | Longwarry South | Gipps. |
| Hoddle's Creek | E/M. | Longwood | N/E. |
| Hoddle Range | Gipps. | Lower Gellibrand | S/W. |
| Homebush | Mid. | Lurg | N/E. |
| Hopetoun* | W. | Lyons | Glen. |
| Hordern Vale | S/W. | Lyonville | Mid. |
| Horsham* | W. | | |
| Humevale | E/M. | Macclesfield | E/M. |
| Hunter | Ben.l. | Mack's Creek | Gipps. |
| Hurstbridge | E/M. | Macarna | N/W. |
| | | Manangatang* | N/W. |
| Illabrook | Ball. | Mannibadar | Ball. |
| Indented Head | Geel. | Mardan South | Gipps. |
| Inverleigh | S/W. | Marlo | Gipps. |
| Irrewillipe | S/W. | Maroona | S/W. |
| | | Marysville | N/E. |
| Jeeralang Junction | Gipps. | Maud | Geel. |
| Jeeralang North | Gipps. | Meereek | Glen. |
| Jeffries | Glen. | Melville Forest | Glen. |
| Jeparit* | W. | Mena Park | Ball. |
| Johanna | S/W. | Meredith | Geel. |
| | | Merino | Glen. |
| Kaladbro | Glen. | Merricks | E/M. |
| Kalimna West | Gipps. | Merrijig | N/E. |
| Kamarooka | Bend. | Merriville | S/W. |
| Kanagulk | Glen. | Merton | N/E. |
| Kangaroo Hills | Ball. | Metcalfe | Mid. |
| Kaniva* | W. | Metcalfe East | Mid. |
| Kanumbra | N/E. | Mia Mia | Mid. |
| Kanyapella | N/E. | Middle Creek | Ball. |
| Karabeal | Glen. | Millbrook | Ball. |
| Kardella | Gipps. | Mincha | N/W. |
| Kawarren | S/W. | Minhamite | S/W. |
| Kennedy's Creek | S/W. | Mininera | S/W. |
| Kentbruck | Glen. | Minyip* | W. |
| Kerang* | N/W. | Mirranatwa | Glen. |
| Kernot | Gipps. | Mitta Mitta | N/E. |
| Kerri | Mid. | Modella | Gipps. |
| Kilcunda | Gipps. | Modewarre | S/W. |
| Kilmore* | N/E. | Moglonemby | N/E. |
| Kinglake | E/M. | Mologa | N/W. |
| Knebsworth | Glen. | Molyullah | N/E. |
| Koallah | S/W. | Moonambel | Mid. |
| Konongwootong | Glen. | Moondarra | Gipps. |
| Koondrook* | N/W. | Mooralla | Glen. |
| Kornalla | Gipps. | Moriac | Geel. |
| Kooroocheang | Ball. | Morrison | Geel. |
| Koorooman | Gipps. | Mount Best | Gipps. |
| Korong Vale* | Bend. | Mount Bute | S/W. |
| Kotupna | N/E. | Mount Clear | Ball. |
| Krowera | Gipps. | Mount Cole | Mid. |

| Centre | Branch or Region | Centre | Branch or Region |
|--------------------|------------------------|------------------|------------------------|
| Mount Franklin | Ball. | Portland* | Glen. |
| Mount Lonarch | Mid. | Portland West | Glen. |
| Mount Moriac | Geel. | Powelltown | E/M. |
| Mount Prospect | Ball. | Princetown | S/W. |
| Mount Sabine | S/W. | Puralka | Glen. |
| Mount Square Top | Gipps. | Pura Pura | S/W. |
| Mount Scobie | N/E. | Purnim | S/W. |
| Mount Wallace | Ball. | Purrumbete South | S/W. |
| Moutajup | Glen. | Pyalong | N/E. |
| Muckatah | N/E. | Pyramid Hill* | N/W. |
| Mudgegonga | N/E. | | |
| Mundoona | N/E. | Quambatook* | N/W. |
| Munro | Gipps. | Queenstown | E/M. |
| Murchison North | N/E. | | |
| Murgheboluc | Geel. | Rainbow* | W. |
| Murrabit | N/W. | Redbank | Mid. |
| Murrindindi | N/E. | Redesdale | Mid. |
| Murtoa* | W. | Red Hill South | E/M. |
| Myall | N/W. | Rennick | Glen. |
| Myaring | Glen. | Rhyll | Gipps. |
| Myrree | N/E. | Ripplebrook | Gipps. |
| Myrtle Creek | Mid. | Rochford | Mid. |
| | | Rocklyn | Ball. |
| | | Rokewood | S/W. |
| Nagambie* | N/E. | Rossbridge | S/W. |
| Nalinga | N/E. | Ross Creek | Ball. |
| Nambrok | Gipps. | Running Creek | N/E. |
| Narbethong | N/E. | Rupanyup* | W. |
| Nareen | Glen. | Rushworth* | N/E. |
| Naringaningalook | N/E. | Russell's Bridge | Geel. |
| Nar Nar Goon North | Gipps. | Ryan's Creek | N/E. |
| Narracan | Gipps. | | |
| Natimuk* | W. | Samaria | N/E. |
| Natte Yallock | Mid. | Sandford | Glen. |
| Navarre | Mid. | Sandon | Mid. |
| Neereena | Gipps. | Sandy Creek | N/E. |
| Nelson | Glen. | San Remo | Gipps. |
| Newfield | S/W. | Sarsfield | Gipps. |
| Newham | Mid. | Sea Lake* | N/W. |
| Newhaven | Gipps. | Seaview | Gipps. |
| Newington | Geel. | Sedgwick | Bend. |
| Nhill* | W. | Serpentine | Bend. |
| Nicholson South | Gipps. | Serviceton* | W. |
| Nirranda | S/W. | Seville | E/M. |
| Norong | N/E. | Shean's Creek | N/E. |
| Nowa Nowa | Gipps. | Shelbourne | Mid. |
| Nullawarre | S/W. | Shelford | Geel. |
| Nyah | N/W. | Shepherd's Flat | Ball. |
| Nyah West | N/W. | Skene's Creek | S/W. |
| | | Smythe's Creek | Ball. |
| Olangolah | S/W. | Snake Valley | Ball. |
| Orbost* | Gipps. | Spargo's Creek | Ball. |
| Orford | S/W. | Springfield | Mid. |
| Oxley | N/E. | Spring Hill | Mid. |
| | | St. Arnaud* | Mid. |
| Pakenham East | E/M. | St. Helena | S/W. |
| Pakenham South | Gipps. | St. Leonards | Geel. |
| Panton Hills | E/M. | Stacey's Bridge | Gipps. |
| Paraparap | Geel. | Stalker | S/W. |
| Paschendale | Glen. | Stanley | N/E. |
| Pastoria | Mid. | Stawell* | Ball. |
| Peechelba | N/E. | Steel's Creek | E/M. |
| Pennyroyal | S/W. | Stewarton | N/E. |
| Peterborough | S/W. | Stonehaven | Geel. |
| Pheasants Creek | Gipps. | Stony Point | E/M. |
| Piangil | N/W. | Strangway | Mid. |
| Pidgeon Ponds | Glen. | Strathbogie | N/E. |
| Piggoreet | Ball. | Strath Creek | N/E. |
| Piper's Creek | Mid. | Strathdownie | Glen. |
| Pittong | Ball. | Strathlea | Mid. |
| Pomonal | Ball. | Struan | S/W. |
| Poolajelo | Glen. | Stuart Mill | Mid. |
| Poowong South | Gipps. | Sutton Grange | Mid. |
| Porepunkah | N/E. | Swan Hill* | N/W. |
| Port Campbell* | S/W. | Swan Pool | N/E. |

| Centre | Branch or Region | Centre | Branch or Region |
|-----------------|------------------------|----------------|------------------------|
| Tabilk | N/E. | Walmer | Mid. |
| Taggerty | N/E. | Walwa* | N/E. |
| Tahara Bridge | Glen. | Wanalta | N/E. |
| Tallandoon | N/E. | Wandin | E/M. |
| Taminick | N/E. | Wandin East | E/M. |
| Tanbybyrn | S/W. | Wandin North | E/M. |
| Tarilta | Mid. | Wandiligong | N/E. |
| Tarraville | Gipps. | Wandovale | Glen. |
| Tarrawarra | E/M. | Wangerrip | S/W. |
| Tarrawingee | N/E. | Warburton East | E/M. |
| Tarrayoukyan | Glen. | Warragamba | Bend. |
| Tarwin | Gipps. | Warrabkook | Glen. |
| Tarwin Lower | Gipps. | Warracknabeal* | W. |
| Tarwin Meadows | Gipps. | Warrayure | Glen. |
| Tarwin Middle | Gipps. | Warrenbayne | N/E. |
| Tatong | N/E. | Wattle Glen | E/M. |
| Tatyoon | S/W. | Wattle Hill | S/W. |
| Teesdale | Geel. | Weeaprounah | S/W. |
| Telangatuk | Glen. | Weering | S/W. |
| Telford | N/E. | Wedderburn* | Bend. |
| Tennyson | N/E. | Wensleydale | S/W. |
| The Heart | Gipps. | Werona | Mid. |
| The Patch | E/M. | Werneth | S/W. |
| The Sisters | S/W. | Whitfield | N/E. |
| Thorpdale South | Gipps. | Wickliffe | S/W. |
| Timmering | N/E. | Wilby | N/E. |
| Tintaldra | N/E. | Willung | Gipps. |
| Tomahawk Creek | S/W. | Winton North | N/E. |
| Toolamba | N/E. | Womberlano | Glen. |
| Toolangi | E/M. | Wongarra | S/W. |
| Toolern Vale | Mid. | Woodleigh | Gipps. |
| Toora North | Gipps. | Woodside | Gipps. |
| Toora South | Gipps. | Woods Point | E/M. |
| Topiram | Gipps. | Woodstock | E/M. |
| Turrumberry | N/E. | Woohlpooer | Glen. |
| Towong | N/E. | Woolsthorpe | S/W. |
| Tragowel | N/W. | Woomelang* | N/W. |
| Trawalla | Ball. | Wooragee | N/E. |
| Trentham East | Mid. | Wooreen | Gipps. |
| Trida | Gipps. | Woori Yallock | E/M. |
| Tulloh | S/W. | Wycheproof* | N/W. |
| Tyrendarra East | Glen. | Wyelangta | S/W. |
| | | Wye River | S/W. |
| | | Wyuna East | N/E. |
| Ullina | Ball. | | |
| Ultima | N/W. | Yabba North | N/E. |
| Undera | N/E. | Yambuk | S/W. |
| Upper Coliban | Mid. | Yandoit | Mid. |
| Upper Pakenham | E/M. | Yan Yan Curt | S/W. |
| | | Yarck | N/E. |
| Vasey | Glen. | Yarrowalla | N/W. |
| Vaughan | Mid. | Yellingbo | E/M. |
| Ventnor | Gipps. | Yendon | Ball. |
| Victoria Valley | Glen. | Yeodene | S/W. |
| Vite Vite | S/W. | Youanmite | N/E. |
| | | Youarang | N/E. |
| Wallacedale | Glen. | Yulecart | Glen. |
| Wallan | E/M. | Yuulong | S/W. |
| Wallinduc | S/W. | | |

STATE ELECTRICITY COMMISSION OF VICTORIA
STANDARD TARIFFS AS AT 1st JULY, 1951

Appendix No. 5

TARIFFS FOR NON-RESIDENTIAL PREMISES

| Tariffs | Residential and Commercial | | | Farming Farming Operations Only | Industrial Factories and other Industrial Establishments | Miscellaneous |
|--|--|--|--|---|---|---------------|
| | Metropolitan | Provincial City and Town (Ballarat, Bendigo, Geelong and Large Towns) | Country (Small Towns and Rural Areas) | All Extra- Metropolitan Areas | All Supply Areas | |
| | 1 | 2 | 3 | 4 | 5 | |
| Residential Tariff (Domestic and Commercial Residential Premises) — | | | | | | |
| Service Charge a month for each assessable room | 1s. 3d. | 1s. 7d. | 1s. 8d. | | | |
| Rate a kWh | 1.5d. | 1.95d. | 2.1d. | | | |
| Maximum overall rate a kWh | 7.0d. | 7.0d. | 7.0d. | | | |
| Lighting— | | | | | | |
| Block Tariff — rates a kWh (Based on monthly consumption) | First 20 at 5.5d. Balance at 4.5d. | First 100 at 7.0d. Balance at 5.0d. | First 100 at 7.75d. Next 200 at 6.25d. Balance at 5.0d. | | First 20 at 5.5d. Balance at 4.5d. | |
| Power and Heating— | | | | | | |
| Block Tariff — rates a kWh (Based on monthly consumption) | First 200 at 3.0d. Next 4,800 at 1.75d. „ 20,000 at 1.4d. Balance at 1.35d. 11 p.m.-7 a.m. — 0.65d. | First 200 at 3.5d. Next 4,800 at 2.25d. „ 20,000 at 1.55d. Balance at 1.5d. 10.30 p.m.-6.30 a.m.* — 0.725d. | First 50 at 3.75d. Next 150 at 3.5d. „ 4,800 at 2.25d. „ 20,000 at 1.55d. Balance at 1.5d. 10 p.m.-6 a.m. — 0.725d. | | First 200 at 3.0d. Next 4,800 at 1.75d. „ 20,000 at 1.4d. Balance at 1.35d. 11 p.m.-7 a.m.*—0.65d. | |
| Rental a month for each two-rate meter | 5s. | 5s. | 5s. | „ 4,800 at 2.25d. | 5s. | |
| Power, Heating and Lighting — | | | | | | |
| Block Tariff — rates a kWh (Based on monthly consumption) | Commercial General Service First 20 at 5.5d. Next 980 at 4.5d. „ 1,000 at 3.0d. „ 3,000 at 2.6d. „ 20,000 at 1.4d. Balance at 1.35d. 11 p.m.-7 a.m. — 0.65d. (Power & Heating Only) | Commercial General Service First 100 at 7.0d. Next 900 at 5.0d. „ 4,000 at 3.5d. „ 20,000 at 1.55d. Balance at 1.5d. 10.30 p.m.-6.30 a.m.* — 0.725d. (Power & Heating Only) | Commercial General Service First 100 at 7.75d. Next 200 at 6.25d. „ 700 at 5.0d. „ 4,000 at 3.5d. „ 20,000 at 1.55d. Balance at 1.5d. 10 p.m.-6 a.m. — 0.725d. (Power & Heating Only) | Farming General Service First 4 at 7.5d. Next 198 at 3.5d. Balance at 1.55d. 10 p.m.-6 a.m.*—0.725d. | Industrial All-Purposes First 20 at 5.5d. Next 480 at 4.5d. „ 4,500 at 2.7d. „ 20,000 at 1.4d. „ 100,000 at 1.35d. Balance at 1.25d. 11 p.m.-7 a.m. — 0.65d. (See Note 2 below) | |
| Rental a month for each two-rate meter | 5s. | 5s. | 5s. | 5s. | 5s. | |
| Industrial Maximum Demand (See Note 3 below) | | | | | | |
| Power, Heating and Lighting | | | | | £1.1s.8d. a month for each kW of maximum demand plus 0.55d. a kWh (500 kW mini- mum demand charge.) Reset Monthly. | |
| Commercial Range (Electric Cooking) — Rate a kWh | 1.5d. | 1.95d. | 2.1d. | | | |
| Water Heating — Night Tariff Rate a kWh | 0.725d. | 0.825d. | 0.825d. | 0.825d. | 0.725d. | |
| Minimum Charge — a month | 2s. 6d. | 3s. | 3s. 6d. | 3s. | 2s. 6d. | |

* Prescribed hours for these tariffs are 10.30 p.m.—6.30 a.m. in Ballarat, Bendigo and Geelong. In other extra-metropolitan areas the hours are 10 p.m. — 6 a.m.

Notes.—1. Details regarding the application of the above tariffs are shown in the Commission's published tariff schedules, which are available on request. 2. A consumer adopting the Industrial All-Purposes Tariff must agree to pay a special minimum charge of £15.1s.8d. per month. 3. The Industrial Maximum Demand Tariff is available only to consumers entering into a five-year agreement providing for high tension supply and for monthly payments based on the minimum demand indicated or half the stipulated rate of supply, whichever is the greater.

STATE OF VICTORIA

ELECTRICITY SUPPLY UNDERTAKINGS (MUNICIPAL AND PRIVATE.)

Appendix No. 6.

| Municipality or Centre | Supply Authority | System of Supply | Population | Number of Consumers | Tariffs |
|---|-----------------------------|---|------------|---------------------|--|
| METROPOLITAN. | | | | | |
| Supplied in Bulk by State Electricity Commission | | | | | |
| City of Melbourne (excl. Flemington) | Melbourne City Council | { D.C., 230-460 v. A.C., 3 ph., 230-400 v. } | 73,200 | 28,955 | Metropolitan Standard Tariffs apply in all these territories with the exception of that of the Melbourne City Council, which has the following Metropolitan Standard Tariffs only— Residential, All-purposes, Night Rate Water Heating. In addition to the above, the Melbourne City Council has Tariffs different from Standard for commercial and industrial lighting, radiators, and power and heating. |
| Box Hill, and City of Nunawading | Box Hill City Council | A.C., 3 ph., 230-400 v. | 32,600 | 11,605 | |
| Brunswick | Brunswick City Council | A.C., 3 ph., 230-400 v. | 60,000 | 15,494 | |
| Coburg | Coburg City Council | A.C., 3 ph., 230-400 v. | 57,315 | 14,807 | |
| Footscray and part of Braybrook Shire | Footscray City Council | A.C., 3 ph., 230-400 v. | 65,000 | 17,474 | |
| Heidelberg (excl. Greensborough) | Heidelberg City Council | A.C., 3 ph., 230-400 v. | 38,296 | 11,131 | |
| Northcote | Northcote City Council | A.C., 3 ph., 230-400 v. | 45,000 | 12,607 | |
| Port Melbourne | Port Melbourne City Council | A.C., 3 ph., 230-400 v. | 14,250 | 3,750 | |
| Preston | Preston City Council | A.C., 3 ph., 230-400 v. | 50,000 | 13,263 | |
| Williamstown | Williamstown City Council | A.C., 3 ph., 230-400 v. | 26,907 | 7,778 | |
| | | | 462,568 | 136,864 | (Cont'd.) |

STATE OF VICTORIA

ELECTRICITY SUPPLY UNDERTAKINGS (MUNICIPAL AND PRIVATE.) — Continued. Appendix No. 6

| Municipality or Centre | Supply Authority | System of Supply | Population | Number of Consumers | Tariffs | |
|------------------------|---|-------------------------|------------|---------------------|---|-----------------------------|
| | | | | | Lighting | Power |
| COUNTRY. | | | | | | |
| Apollo Bay | H. A. Bloek | D.C., 230 v. | 700 | 223 | 1s.3d. to 1s. Optional Tariff — 1s.5d. per room per month, plus 6d. per kWh. | 6d. to 3d. |
| Ararat | Ararat City Council | A.C., 3 ph., 230-400 v. | 6,900 | 1,666 | 9d. to 1½d. Optional domestic tariff — 2 kWh. per room per month at 9d. per kWh. Next 30 kWh. 2½d. All further kWh. 1½d. | 3½d. to 1½d. |
| Beaufort | Ripon Shire Council | A.C., 3 ph., 230-400 v. | 1,500 | 375 | 10d. | 4d. |
| Beulah | Karkarooc Shire Council | D.C., 230-460 v. | 575 | 158 | 1s.5d. | 5d. |
| Birchip | Birchip Electric Supply Co. Ltd. | D.C., 230 v. | 600 | 240 | 1s.4d. | 8d. to 6d. |
| Boort | Boort Co-operative Butter & Ice Co. Ltd. | D.C., 230 v. | 600 | 228 | 1s.3d. to 9d. | 6d. to 4d. |
| Casterton | Casterton Electric Supply Co. Pty. Ltd. | D.C., 230 v. | 2,200 | 573 | 11d. to 9d. | 6d. to 4d. |
| Charlton | Charlton Electric Light & Power Co. Ltd. | D.C., 230 v. | 1,300 | 428 | 1s. to 9d. | 6d. to 4d. |
| Cohuna | Gunbower Co-operative Butter Factory & Trading Co. Ltd. | A.C., 3 ph., 230-400 v. | 1,050 | 410 | 1s. to 9d. | 6d. to 2d. |
| Corryong | Upper Murray Shire Council | A.C., 3 ph., 230-400 v. | 700 | 209 | 1s.3d. | 6d. to 3d. |
| Cowes | Phillip Island Shire Council | A.C., 3 ph., 230-400 v. | 500 | 223 | 1s.1d. to 10d. | 6½d. to 4d. |
| Dimboola | Dimboola Shire Council | D.C., 230-460 v. | 1,800 | 544 | 1s. to 8d. | 6d. to 3d. |
| Donald | Donald Shire Council | D.C., 230 v. | 1,500 | 447 | 1s. to 10d. | 6d. to 2½d. |
| *Doncaster | Doncaster Shire Council | A.C., 1 ph., 200-400 v. | 2,600 | 873 | Dom. 7d. Ind. 7d. Optional Tariff—1s.6d. per room per month, plus 1½d. per kWh. | Dom. 4d. Ind. 4d. to 1d. |
| Edenhope | Edenhope E.S. Co. Pty. Ltd. | D.C., 230 v. | 600 | 82 | 1s.3d. | 9d. |
| Goroke | Goroke Freezing & Trading Co. Pty. Ltd. | D.C., 230 v. | 390 | 96 | 1s.4d. | 6d. |
| Gunbower | Gunbower Co-operative Butter Factory and Trading Co. Ltd. | D.C., 230 v. | 260 | 56 | 1s.3d. to 9d. | 6d. to 3d. |

(Cont'd.)

STATE OF VICTORIA

ELECTRICITY SUPPLY UNDERTAKINGS (MUNICIPAL AND PRIVATE.) — Continued.

Appendix No. 6

| Municipality or Centre | Supply Authority | System of Supply | Population | Number of Consumers | Tariffs | |
|--|---|---|------------|---------------------|---|---|
| | | | | | Lighting | Power |
| Heathcote | McIvor Shire Council | D.C., 230-460 v. | 1,400 | 293 | 1s.6d. | 9d. to 7d. |
| Heywood | S. F. Block | A.C., 3 ph., 230-400 v. | 1,200 | 260 | 1s.4d. to 1s.1d. | 7d. |
| Hopetoun | Karkarooc Shire Council | D.C., 230 v. | 800 | 251 | 11d. | 5d. |
| Horsham | Horsham Shire Council | { D.C., 230-460 v. } { A.C., 3 ph., 230-400 v. } | 6,700 | 1,949 | 9½d. | Dom. 4½d. to 2d. Ind. 9½d. to 1.85d. |
| Jeparit | S. F. Block (trading as "Jeparit Electric Light and Power Station") | D.C., 230 v. | 825 | 263 | 1s.1d. | 7d. |
| Kaniva | Kaniva Shire Council | A.C., 3 ph., 230-400 v. | 760 | 282 | 1s.2d. | 6d. to 4d. |
| Kerang (incl. Koondrook) | Kerang Shire Council | A.C., 3 ph., 230-400 v. | 3,000 | 892 | 9d. to 2d. | 5d. to 1½d. |
| Kilmore | Kilmore Shire Council | D.C., 230 v. | 1,200 | 260 | 1s. | 5d. |
| Manangatang | J. Andrews | D.C., 230 v. | 400 | 88 | 1s.6d. | 9d. to 5d. |
| Mildura (including Cardross, Red Cliffs, Merbein and Irymple). | Mildura City Council | A.C., 3 ph., 230-400 v. | 18,000 | 5,802 | 7½d. to 6½d. | Dom. 1½d. to 1½d. Ind. 2½d. to 1½d. |
| Minyip | Dunmunkle Shire Council | D.C., 230 v. | 700 | 205 | District Area Optional Tariff—1s.3d. per room per month, plus 1½d. per kWh. | 8d. to 2d. |
| Murrayville | Walpeup Shire Council | A.C., 3 ph., 230-400 v. | 400 | 95 | 1s.6d. | 7d. to 5d. |
| Murtoa | Dunmunkle Shire Council | D.C., 230 v. | 1,148 | 349 | 9d. | 4d. to 2d. |
| Nagambie | Goulburn Shire Council | D.C., 230-460 v. | 900 | 267 | 10d. | 6d. |
| Natimuk | H. C. Woolmer | A.C., 3 ph., 230-400 v. | 500 | 126 | 1s.3d. to 1s. | 7d. to 5d. |
| Nhill | Lowan Shire Council | D.C., 230-460 v. | 1,980 | 611 | 9d. | 5d. to 3½d. |
| Omeo | Omeo Electric Supply and Motor Co. Pty. Ltd. | A.C., 3 ph., 230-400 v. | 250 | 95 | 1s.6d. | 6d. |
| Orbost | Orbost Butter Produce Co. Ltd. | D.C., 230 v. | 2,000 | 578 | 1s. to 11d. | 7d. to 5d. |
| Ouyen | Walpeup Shire Council | D.C., 230-460 v. | 1,100 | 310 | 1s.2d. | 5d. |
| Port Campbell | Port Campbell Electric Supply Co. Pty. Ltd. | D.C., 230 v. | 400 | 30 | 1s.6d. | 9d. |
| Portland | Portland Town Council | A.C., 3 ph., 230-400 v. | 4,000 | 1,277 | 10d. to 6d. | 5d. to 3d. |
| Pyramid | Gordon Shire Council | A.C., 3 ph., 230-400 v. | 500 | 142 | 1s.3d. to 6d. | 6d. to 4d. |
| Quambatook | Kerang Shire Council | D.C., 230 v. | 500 | 127 | 1s. to 9d. | 6d. to 4d. |
| Rainbow | Frank Dawson Pty. Ltd. | D.C., 230 v. | 1,000 | 222 | 1s. to 8d. | 6d. |

(Cont'd.)

STATE OF VICTORIA

ELECTRICITY SUPPLY UNDERTAKINGS (MUNICIPAL AND PRIVATE.) — Continued. Appendix No. 6

| Municipality or Centre | Supply Authority | System of Supply | Population | Number of Consumers | Tariffs | |
|--|--------------------------------|-------------------------|------------|---------------------|--|-------------|
| | | | | | Lighting | Power |
| Robinvale | Swan Hill Shire Council | A.C., 3 ph., 230-400 v. | 500 | 94 | 1s.6d. Optional Tariff—1s.6d. per room per month, plus 6d. per kWh. | 9d. |
| Rupanyup | Dunmunkle Shire Council | D.C., 230 v. | 700 | 175 | 1s.1d. | 8d. to 2d. |
| Rushworth | Waranga Shire Council | D.C., 230 v. | 1,300 | 373 | 1s.2d. | 6d. to 3d. |
| Serviceton | C. C. Wallis | D.C., 230 v. | 175 | 37 | 1s. | 6d. |
| Stawell | Stawell Borough Council | A.C., 3 ph., 230-400 v. | 4,900 | 1,566 | 9d. | 4d. to 2d. |
| St. Arnaud | St. Arnaud Town Council | A.C., 3 ph., 230-400 v. | 3,000 | 887 | 11d. to 6d. Optional Tariff — 1s.4d. per room per month, plus 3½d. per kWh. | 5d. to 2½d. |
| Swan Hill (Borough) | Swan Hill Borough Council | A.C., 3 ph., 230-400 v. | 5,000 | 1,309 | 8d. to 3d. | 5d. to 1½d. |
| †Swan Hill (Rural Supply) | Swan Hill Shire Council | A.C., 3 ph., 230-400 v. | 11,000 | 1,279 | 1s.3d. to 6d. Optional Tariff — 1s.4d. per room per month, plus 3½d. per kWh. | 5d. to 3½d. |
| Underbool | A. J. Gloster | D.C., 230 v. | 200 | 56 | 1s.6d. | 9d. to 7d. |
| Walwa | J. H. Ferris and A. J. Thomson | D.C., 230 v. | 250 | 29 | 1s.6d. | 9d. |
| Warracknabeal | Warracknabeal E.L. Co. Ltd. | A.C., 3 ph., 230-400 v. | 2,800 | 842 | 1s. | 6d. to 3½d. |
| Wedderburn (incl. Korong Vale) | Korong Shire Council | A.C., 3 ph., 230-400 v. | 1,600 | 358 | 1s.3d. | 6d. to 2½d. |
| Wonthaggi | State Coal Mine | A.C., 3 ph., 240-415 v. | 5,230 | 1,590 | 7d. | 3d. to 1½d. |
| Woomelang | E. H. & L. J. Bailey | D.C., 230 v. | 410 | 66 | 1s.6d. | 9d. |
| Wycheproof (incl. Sea Lake and Intermediate Towns) | Wycheproof Shire Council | A.C., 3 ph., 230-400 v. | 3,000 | 658 | 11d. to 9d. | 5d. to 2d. |

*Supplied in bulk by State Electricity Commission.

†Supplied in bulk by Swan Hill Borough Council.

NEW SOUTH WALES UNDERTAKINGS (BULK SUPPLIES)

Municipalities of Albury, Berrigan, Coreen, Corowa, and Moama purchased from the State Electricity Commission of Victoria 28,504,385 kWh during the year.

**METROPOLITAN MUNICIPAL UNDERTAKINGS SERVED IN BULK BY
THE STATE ELECTRICITY COMMISSION OF VICTORIA**

Appendix No.

FINANCIAL RESULTS — YEARS 1941 TO 1950

| Council | Revenue | Expenditure | Profit | Less Appropriations | | | Net Surplus/ Deficit |
|-------------------|---------|-------------|--------|---------------------|-----------------|--------|-------------------------|
| | | | | Loan Redemption | Municipal Funds | Total | |
| | £ | £ | £ | £ | £ | £ | £ |
| Box Hill | | | | | | | |
| 1941 | 51,468 | 39,445 | 12,023 | 5,790 | 6,233 | 12,023 | — |
| 1942 | 53,045 | 39,078 | 13,967 | 6,553 | 7,414 | 13,967 | — |
| 1943 | 53,104 | 41,455 | 11,649 | 7,480 | 4,169 | 11,649 | — |
| 1944 | 57,594 | 41,920 | 15,674 | 7,732 | 7,942 | 15,674 | — |
| 1945 | 64,802 | 44,360 | 20,442 | 8,217 | 12,225 | 20,442 | — |
| 1946 | 72,182 | 53,678 | 18,504 | 6,042 | 12,462 | 18,504 | — |
| 1947 | 83,135 | 65,137 | 17,998 | 6,969 | 11,029 | 17,998 | — |
| 1948 | 105,684 | 85,736 | 19,948 | 8,484 | 11,464 | 19,948 | — |
| 1949 | 136,336 | 118,483 | 17,853 | 9,522 | 8,331 | 17,853 | — |
| 1950 | 186,379 | 174,068 | 12,311 | 11,626 | 685 | 12,311 | — |
| Brunswick | | | | | | | |
| 1941 | 152,691 | 141,890 | 10,801 | 3,350 | 10,000 | 13,350 | D 2,549 |
| 1942 | 152,373 | 139,286 | 13,087 | 3,484 | 10,000 | 13,484 | D 397 |
| 1943 | 145,935 | 131,390 | 14,545 | 3,686 | 16,823 | 20,509 | D 5,964 |
| 1944 | 147,616 | 130,061 | 17,555 | 3,865 | 15,000 | 18,865 | D 1,310 |
| 1945 | 157,367 | 139,975 | 17,392 | 4,056 | 16,500 | 20,556 | D 3,164 |
| 1946 | 168,628 | 149,543 | 19,085 | 4,254 | 20,000 | 24,254 | D 5,169 |
| 1947 | 177,579 | 146,922 | 30,657 | 4,464 | 15,000 | 19,464 | S 11,193 |
| 1948 | 214,139 | 169,840 | 44,299 | 4,683 | 62,041 | 66,724 | D 22,425 |
| 1949 | 246,825 | 199,077 | 47,748 | 5,440 | 48,800 | 54,240 | D 6,492 |
| 1950 | 278,465 | 232,407 | 46,058 | 5,699 | 43,800 | 49,499 | D 3,441 |
| Coburg | | | | | | | |
| 1941 | 83,007 | 64,667 | 18,340 | 3,723 | 15,000 | 18,723 | D 383 |
| 1942 | 86,532 | 68,731 | 17,801 | 3,933 | 14,600 | 18,533 | D 732 |
| 1943 | 92,225 | 76,206 | 16,019 | 3,656 | 13,500 | 17,156 | D 1,137 |
| 1944 | 94,850 | 77,105 | 17,745 | 3,687 | 13,500 | 17,187 | S 558 |
| 1945 | 99,400 | 81,604 | 17,796 | 4,123 | 13,500 | 17,623 | S 173 |
| 1946 | 103,826 | 87,612 | 16,214 | 4,456 | 13,500 | 17,956 | D 1,742 |
| 1947 | 105,075 | 88,826 | 16,249 | 4,654 | 13,500 | 18,154 | D 1,905 |
| 1948 | 126,282 | 105,454 | 20,828 | 4,917 | 13,500 | 18,417 | S 2,411 |
| 1949 | 151,807 | 128,075 | 23,732 | 5,412 | 18,500 | 23,912 | D 180 |
| 1950 | 177,953 | 160,490 | 17,463 | 5,875 | 18,000 | 23,875 | D 6,412 |
| Footscray | | | | | | | |
| 1941 | 204,576 | 159,237 | 45,339 | 1,282 | 35,327 | 36,609 | S 8,730 |
| 1942 | 227,130 | 182,477 | 44,653 | 1,360 | 37,031 | 38,391 | S 6,262 |
| 1943 | 255,740 | 217,059 | 38,681 | 1,443 | 27,337 | 28,780 | S 9,901 |
| 1944 | 284,282 | 243,162 | 41,120 | 1,531 | 30,552 | 32,083 | S 9,037 |
| 1945 | 287,082 | 246,648 | 40,434 | 1,624 | 29,941 | 31,565 | S 8,869 |
| 1946 | 298,953 | 256,278 | 42,675 | 1,723 | 39,631 | 41,354 | S 1,321 |
| 1947 | 311,540 | 269,761 | 41,779 | 1,828 | 39,860 | 41,688 | S 91 |
| 1948 | 354,549 | 317,440 | 37,109 | 1,940 | 48,481 | 50,421 | D 13,312 |
| 1949 | 423,689 | 386,197 | 37,492 | 2,058 | 48,750 | 50,808 | D 13,316 |
| 1950 | 554,744 | 504,281 | 50,463 | 2,183 | 42,280 | 44,463 | S 6,000 |
| Heidelberg | | | | | | | |
| 1941 | 59,041 | 40,535 | 18,506 | 2,910 | 15,596 | 18,506 | — |
| 1942 | 61,403 | 44,301 | 17,102 | 3,262 | 13,840 | 17,102 | — |
| 1943 | 70,446 | 49,892 | 20,554 | 3,480 | 17,074 | 20,554 | — |
| 1944 | 74,731 | 53,754 | 20,977 | 3,345 | 17,632 | 20,977 | — |
| 1945 | 77,799 | 58,159 | 19,640 | 2,742 | 17,632 | 20,374 | D 734 |
| 1946 | 83,441 | 62,037 | 21,404 | 1,593 | 16,898 | 18,491 | S 2,913 |
| 1947 | 93,714 | 69,348 | 24,366 | 2,330 | 19,811 | 22,141 | S 2,225 |
| 1948 | 108,066 | 83,184 | 24,882 | 2,900 | 21,878 | 24,778 | S 104 |
| 1949 | 139,651 | 116,209 | 23,442 | 3,720 | 20,888 | 24,608 | D 1,166 |
| 1950 | 170,357 | 157,219 | 13,138 | 5,199 | 18,662 | 23,861 | D 10,723 |

| Council | Revenue | Expenditure | Profit | Less Appropriations | | | | | Net Surplus/ Deficit |
|-----------------------|-----------|-------------|---------|---------------------|-----------------|-------------------------|-----------------|---------|-------------------------|
| | | | | Loan Redemption | Municipal Funds | Changeover D.C. to A.C. | Capital Account | Total | |
| | £ | £ | £ | £ | £ | £ | £ | £ | £ |
| Northcote | | | | | | | | | |
| 1941 | 80,302 | 51,903 | 28,399 | 3,909 | 22,000 | — | — | 25,909 | S 2,490 |
| 1942 | 79,079 | 51,286 | 27,793 | 2,890 | 17,000 | — | — | 19,890 | S 7,903 |
| 1943 | 74,009 | 51,781 | 22,228 | 2,906 | 20,000 | — | — | 22,906 | D 678 |
| 1944 | 78,466 | 52,949 | 25,517 | 2,424 | 20,000 | — | — | 22,424 | S 3,093 |
| 1945 | 85,722 | 55,418 | 30,304 | 2,680 | 20,000 | — | — | 22,680 | S 7,624 |
| 1946 | 95,897 | 62,957 | 32,940 | 2,992 | 25,000 | — | — | 27,992 | S 4,948 |
| 1947 | 102,830 | 68,498 | 34,332 | 3,144 | 25,000 | — | — | 28,144 | S 6,188 |
| 1948 | 118,163 | 81,181 | 36,982 | 3,823 | 45,000 | — | — | 48,823 | D 11,841 |
| 1949 | 138,984 | 99,249 | 39,735 | 4,808 | 25,000 | — | — | 29,808 | S 9,927 |
| 1950 | 158,558 | 123,353 | 35,205 | 5,290 | 31,000 | — | — | 36,290 | D 1,085 |
| Port Melbourne | | | | | | | | | |
| 1941 | 47,325 | 36,993 | 10,332 | 50 | 5,000 | — | — | 5,050 | S 5,282 |
| 1942 | 55,625 | 42,328 | 13,297 | 51 | — | — | — | 51 | S 13,246 |
| 1943 | 64,595 | 48,699 | 15,896 | 54 | — | — | — | 54 | S 15,842 |
| 1944 | 69,960 | 53,772 | 16,188 | 57 | — | — | — | 57 | S 16,131 |
| 1945 | 72,260 | 59,528 | 12,732 | — | — | — | — | — | S 12,732 |
| 1946 | 70,778 | 61,193 | 9,585 | — | — | — | — | — | S 9,585 |
| 1947 | 72,624 | 60,800 | 11,824 | — | 30,000 | — | — | 30,000 | D 18,176 |
| 1948 | 84,862 | 71,623 | 13,239 | — | — | — | — | — | S 13,239 |
| 1949 | 97,602 | 84,300 | 13,302 | — | 3,000 | — | — | 3,000 | S 10,302 |
| 1950 | 120,565 | 106,353 | 14,212 | — | 3,000 | — | — | 3,000 | S 11,212 |
| Preston | | | | | | | | | |
| 1941 | 67,653 | 50,298 | 17,355 | 3,883 | 14,303 | — | — | 18,186 | D 831 |
| 1942 | 69,115 | 52,573 | 16,542 | 4,308 | 15,052 | — | — | 19,360 | D 2,818 |
| 1943 | 71,179 | 54,834 | 16,345 | 5,100 | 18,000 | — | — | 23,100 | D 6,755 |
| 1944 | 73,234 | 55,505 | 17,729 | 5,041 | 20,000 | — | — | 25,041 | D 7,312 |
| 1945 | 77,916 | 57,442 | 20,474 | 5,309 | 10,000 | — | — | 15,309 | S 5,165 |
| 1946 | 89,467 | 68,167 | 21,300 | 5,588 | 11,000 | — | — | 16,588 | S 4,712 |
| 1947 | 99,833 | 78,906 | 20,927 | 5,885 | 15,000 | — | — | 20,885 | S 42 |
| 1948 | 119,411 | 93,229 | 26,182 | 6,918 | 17,000 | — | — | 23,918 | S 2,264 |
| 1949 | 145,871 | 109,962 | 35,909 | 7,997 | 19,000 | — | — | 26,997 | S 8,912 |
| 1950 | 182,237 | 148,102 | 34,135 | 9,301 | 25,750 | — | — | 35,051 | D 916 |
| Williamstown | | | | | | | | | |
| 1941 | 81,742 | 55,952 | 25,790 | 922 | 20,776 | — | — | 21,698 | S 4,092 |
| 1942 | 95,087 | 69,030 | 26,057 | 966 | 22,753 | — | — | 23,719 | S 2,338 |
| 1943 | 101,385 | 74,620 | 26,765 | 1,010 | 23,240 | — | — | 24,250 | S 2,515 |
| 1944 | 100,771 | 74,841 | 25,930 | 1,054 | 26,285 | — | — | 27,339 | D 1,409 |
| 1945 | 102,579 | 78,282 | 24,297 | 1,098 | 22,300 | — | — | 23,398 | S 899 |
| 1946 | 100,397 | 75,017 | 25,380 | 785 | 25,500 | — | — | 26,285 | D 905 |
| 1947 | 98,081 | 72,906 | 25,175 | — | 23,000 | — | — | 23,000 | S 2,175 |
| 1948 | 113,938 | 87,953 | 25,985 | — | 23,000 | — | — | 23,000 | S 2,985 |
| 1949 | 133,022 | 102,390 | 30,632 | — | 26,350 | — | — | 26,350 | S 4,282 |
| 1950 | 158,484 | 128,607 | 29,877 | — | 26,350 | — | — | 26,350 | S 3,527 |
| Melbourne | | | | | | | | | |
| 1941 | 853,468 | 679,255 | 174,213 | 11,842 | 45,000 | 48,780 | — | 105,622 | S 68,591 |
| 1942 | 882,502 | 734,662 | 147,840 | 11,842 | 45,000 | 20,231 | 70,767 | 147,840 | — |
| 1943 | 907,507 | 765,281 | 142,226 | 11,842 | 45,000 | 19,815 | — | 76,657 | S 65,569 |
| 1944 | 921,451 | 797,023 | 124,428 | 11,092 | 45,000 | 20,262 | — | 76,354 | S 48,074 |
| 1945 | 948,672 | 822,207 | 126,465 | 11,092 | 45,000 | 26,863 | — | 82,955 | S 43,510 |
| 1946 | 942,224 | 848,883 | 93,341 | 11,092 | 45,000 | 40,189 | — | 96,281 | D 2,940 |
| 1947 | 973,677 | 899,004 | 74,673 | 11,093 | 45,000 | — | — | 56,093 | S 18,580 |
| 1948 | 1,145,343 | 1,080,694 | 64,649 | 11,093 | 45,000 | — | — | 56,093 | S 8,556 |
| 1949 | 1,293,627 | 1,197,616 | 96,011 | 11,092 | 45,000 | — | — | 56,092 | S 39,919 |
| 1950 | 1,434,495 | 1,346,219 | 88,276 | 12,152 | 45,000 | — | — | 57,152 | S 31,124 |

METROPOLITAN MUNICIPAL UNDERTAKINGS — COMBINED RESULTS

| Year | Revenue | Expenditure | Profit | Less Appropriations | | | | | Net Surplus/ Deficit |
|------|-----------|-------------|---------|---------------------|--------------------|----------------------------|--------------------|---------|----------------------------|
| | | | | Loan Redemption | Municipal Funds | Changeover D.C. to A.C. | Capital Account | Total | |
| | £ | £ | £ | £ | £ | £ | £ | £ | £ |
| 1941 | 1,681,273 | 1,320,175 | 361,098 | 37,661 | 189,235 | 48,780 | — | 275,676 | S 85,422 |
| 1942 | 1,761,891 | 1,423,752 | 338,139 | 38,649 | 182,690 | 20,231 | 70,767 | 312,337 | S 25,802 |
| 1943 | 1,836,125 | 1,511,217 | 324,908 | 40,657 | 185,143 | 19,815 | — | 245,615 | S 79,293 |
| 1944 | 1,902,955 | 1,580,092 | 322,863 | 39,828 | 195,911 | 20,262 | — | 256,001 | S 66,862 |
| 1945 | 1,973,599 | 1,643,623 | 329,976 | 40,941 | 187,098 | 26,863 | — | 254,902 | S 75,074 |
| 1946 | 2,025,793 | 1,725,365 | 300,428 | 38,525 | 208,991 | 40,189 | — | 287,705 | S 12,723 |
| 1947 | 2,118,088 | 1,820,108 | 297,980 | 40,367 | 237,200 | — | — | 277,567 | S 20,413 |
| 1948 | 2,490,437 | 2,176,334 | 314,103 | 44,758 | 287,364 | — | — | 332,122 | D 18,019 |
| 1949 | 2,907,414 | 2,541,558 | 365,856 | 50,049 | 263,619 | — | — | 313,668 | S 52,188 |
| 1950 | 3,422,237 | 3,081,099 | 341,138 | 57,325 | 254,527 | — | — | 311,852 | S 29,286 |