

1945.
VICTORIA.

STATE ELECTRICITY COMMISSION OF
VICTORIA.

TWENTY-SIXTH ANNUAL REPORT

COVERING THE

FINANCIAL YEAR ENDED 30TH JUNE, 1945,

TOGETHER WITH

APPENDICES.

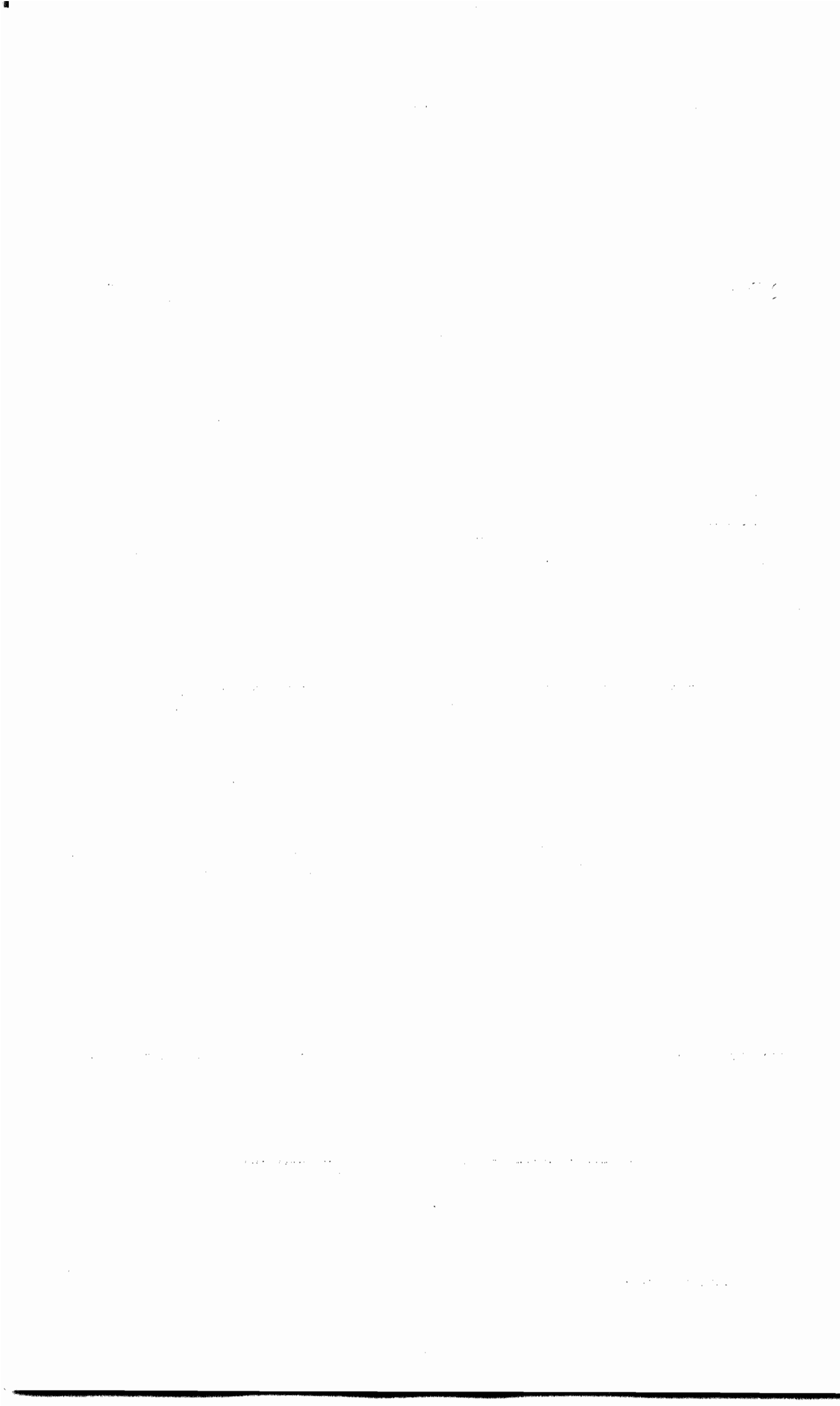
PRESENTED TO PARLIAMENT PURSUANT TO SECTION 35 (b) OF STATE ELECTRICITY COMMISSION ACT No. 3776

[*Approximate Cost of Report* :—Preparation—Not given. Printing (1100 copies), £165.]

By Authority:

J. J. GOURLEY, GOVERNMENT PRINTER, MELBOURNE.

No. 6.—[1s. 6d.]-9667/45.





Personnel who Died on Active Service 1939 = 1945

ADAMSON, F. W., Corporal ..	Power Production Department, Yallourn.
ANGUS, C. P., Leading Aircraftman ..	Yallourn Administration.
ANSALDO, J. F., Private ..	Electricity Supply Department, Metropolitan Branch.
BERWICK, G. R., Leading Wireman ..	Yallourn Administration.
BISHOP, C. L., Sergeant ..	Kiewa Administration.
BOURNE, D. G., Private ..	Yallourn Administration.
BRIEN, J. F., Gunner ..	Coal Supply Department, Yallourn.
BRODERICK, R. S., Private ..	Electricity Supply Department, South-western Branch.
BURT, A. S., Wireman ..	Power Production Department, Yarraville.
*CANET, D., Sergeant ..	Electricity Supply Department, North-eastern Branch.
CARTER, R. R., Flight Lieutenant ..	Power Production Department, Drawing Office.
COLLINS, J. A., Private ..	Electricity Supply Department, Metropolitan Branch.
COWLING, K. R., Pilot Officer ..	Electricity Supply Department, Bendigo Branch.
CRILLY, J., Private ..	Yallourn Administration.
DAMM, G., Private ..	Power Production Department, Kiewa.
DARDEL, J. H., Engineer Lieutenant-Commander ..	Power Production Department, Yallourn.
DAUGHTERS, J. S., Lance Corporal ..	Electricity Supply Department, North-eastern Branch.
DAVIES, B. A., Private ..	Electricity Supply Department, Metropolitan Branch.
DICKSON, R. W., Sergeant ..	Electricity Supply Department, Metropolitan Branch.
EATON, R. J., Leading Aircraftman ..	Power Production Department, Kiewa.
EDMONDS, F. E., Corporal ..	Power Production Department, Yallourn.
FARRELLY, R. P., Lieutenant ..	Power Production Department, Kiewa.
FITZCLARENCE, N. H., Private ..	Briquette Production Department, Yallourn.
GILBERT, J. L. G., Flying Officer ..	Electricity Supply Department, Ballarat Branch.
*GOTTS, R. A., Sergeant ..	Electricity Supply Department, Metropolitan Branch.
GRIFFITHS, A. J., Lieutenant ..	Power Production Department, Civil Branch.
HAAG, F. V., Stoker ..	Fuel Sales Branch.
HAILEY, K. I., Flying Officer ..	Electricity Supply Department, Metropolitan Branch.
HIGGINS, J. C., Warrant Officer ..	Power Production Department, Yarraville.
HOUSE, W. P. B., Private ..	Yallourn Administration.
HUTCHESON, J., Pilot Officer ..	Power Production Department, Yarraville.
KENNEDY, L. A., Sergeant ..	Power Production Department, Yallourn.
KIRK, R. E., Driver ..	Electricity Supply Department, Ballarat Branch.
LANCASTER, R. C., Gunner ..	Electricity Supply Department, Geelong Branch.
LAY, M. F., Flight Sergeant ..	Electricity Supply Department, Richmond Works.
LOFTUS, L. M., Warrant Officer ..	Administrative Department, Accountancy Division.
LORD, J. J., Warrant Officer ..	Electricity Supply Department, Metropolitan Branch.
LYON, J., Private ..	Power Production Department, Yallourn.
McCORMACK, D. W., Squadron Leader (D.F.C. and Bar)	Power Production Department, Electrical Branch.
MACDONALD, D., Leading Aircraftman ..	Electricity Supply Department, Richmond.
McKELVEY, D. C., Trooper ..	Electricity Supply Department, Metropolitan Branch.
*McLAY, R. M., Flight Sergeant ..	Electricity Supply Department, Distribution Division.
*McNAUGHTON, G. E., Flying Officer ..	Electricity Supply Department, Metropolitan Branch.
MANNING, C. J., Private ..	Power Production Department, Construction Branch.
METHERALL, W. J., Sergeant ..	Electricity Supply Department, Metropolitan Branch.
*MOFFITT, W. R., Acting Engine-room Artificer IV.	Power Production Department, Newport
MOORE, K., Flight Lieutenant ..	Electricity Supply Department, Richmond Works.
*O'FARRELL, P. T., Flying Officer ..	Electricity Supply Department, Metropolitan Branch.
OXLADE, A. G., Acting Squadron Leader ..	Electricity Supply Department, Metropolitan Branch.
PRITCHETT, R. W., Driver ..	Coal Supply Department, Yallourn.
REED, I. M., Captain ..	Electricity Supply Department, Geelong Branch.
REILLY, J. B., Engine-room Artificer ..	Yallourn Administration.
ROBERTSON, R. J. H., Corporal ..	Administrative Department, Central Store, Footscray.
RUFFIN, C. A., Major ..	Electricity Supply Department, Geelong Branch.
SHEPPARD, H. V. C., Pilot Officer ..	Electricity Supply Department, North-eastern Branch.
SKINNER, S. G., Private ..	General Services, Yallourn.
SMETHURST, S. W., Sergeant ..	Electricity Supply Department, Eastern Metropolitan Branch.
SPENDLOVE, F. R., Corporal ..	Electricity Supply Department, Metropolitan Branch.
STONE, W. E., Leading Aircraftman ..	Administrative Department, Transport Branch.
TRENWITH, R. G., Major ..	Electricity Supply Department, Metropolitan Branch.
*TURNER, R. H., Gunner ..	Yallourn Administration
TURNOR, P. K., Flying Officer ..	Electricity Supply Department, North-eastern Branch.
WARREN, K., Pilot Officer ..	Administrative Department, Secretarial Branch.
WHITBREAD, W., Acting Corporal ..	Electricity Supply Department, Eastern Metropolitan Branch.
WIBLIN, G. L., Flight Sergeant ..	Administrative Department, Central Store, Footscray.
*WILLIAMS, A. F., Flying Officer ..	Electricity Supply Department, Gippsland Branch.
WILLIAMS, W. L., Leading Aircraftman ..	Electricity Supply Department, Richmond Works.

* Missing. Presumed killed.

*"All you had hoped for, all you had, you gave
To save mankind—yourselves you scorned to save."*

TABLE OF CONTENTS.

	PAGE
Frontispiece—Roll of Honour	3
Features of Year's Operations	6
Operating Conditions	7
Financial	7
Electricity Supply	7
Shortage of Generating Resources	8
Briquette Factory Extensions	8
Development of Victorian Brown Coal Resources	8
Annual Accounts—	
Loan Liability	9
Reserves	9
Capital Expenditure	10
War Loan Investments	10
Further Major Development of the State's Brown Coal Resources	10
Fuel for Power Generation	11
Utilization of Hume Waters for Power Generation	11
Hydro-Electric Resources of the Snowy River	12
Bush Fire Protection Measures	12
Local Government for Yallourn	12
Restrictions on Electrical Development	13
Electricity Supply Tariffs	14
The Commission and the War	14
Yallourn Territory	14
Coal Supply	15
Power Production and Transmission—	
Major Extensions Programme—	
Newport Generating Station	16
Kiewa Hydro-Electric Scheme	17
Main Transmission and Transformation	17
Electricity Supply—	
Analysis of Development	17
Commission's Electricity Supply Undertakings for Local Distribution	18
Tramways—	
Ballarat, Bendigo, and Geelong	19
Briquette Production and Distribution	19
Industrial	20
Long Service Leave	20
Public Safety and other Regulatory Responsibilities	21
Commissioners	22
Death of Sir Arthur Robinson, K.C.M.G.	22
Personnel	22—23

APPENDICES.

No. 1. General Profit and Loss Account	24
2. General Balance-sheet	25
3. Schedule of Fixed Capital	26
4. Schedule of Debentures and Inscribed Stock	27
5. Tabulation of Capital, Revenue and Operating Accounts	28
6. Electricity Sales—Revenue and Consumer Statistics	29
7. Standard Tariffs	30
8. Electricity Supply Undertakings	31
9. Country Electricity Supply Undertakings Acquired	42
10. Transmission and Distribution Systems	43
11. Generation of Electricity	44—45
12. Government Proposals for Yallourn Local Government	46—47

STATE ELECTRICITY COMMISSION OF VICTORIA.

FEATURES OF YEAR'S OPERATIONS.

	1944-45.	1943-44.	Increase or Decrease.	Percentage.
FINANCIAL.				
REVENUE—				
Electricity Supply £	5,259,881	5,101,631	+ 158,250	+ 3·1
Briquetting (after Stock Adjustment and less Sales to Works) £	329,428	316,847	+ 12,581	+ 4·0
Brown Coal £	24,443	21,263	+ 3,180	+ 14·9
Tramways £	146,605	143,086	+ 3,519	+ 2·5
Miscellaneous £	38,804	45,953	— 7,149	— 15·6
	£ 5,799,161	5,628,780	+ 170,381	+ 3·0
EXPENDITURE (including Reserves Appropriations, Writings off, &c.) £	5,739,953	5,503,908	+ 236,045	+ 4·3
NET SURPLUS £	59,208	124,872	— 65,664	— 52·6
ACCUMULATED PROFIT—At end of Year .. £	188,935	129,727	+ 59,208	+ 45·6
CAPITAL EXPENDITURE—At end of Year .. £	31,297,130	29,695,740	+ 1,601,390	+ 5·4
RESERVES—At end of Year £	12,902,334	11,547,016	+ 1,355,318	+ 11·7
ELECTRICITY PRODUCTION AND SALES.				
MAXIMUM COINCIDENT DEMAND ON GENERATING STATIONS (This Year—June 13th) .. kW.	351,600	328,000	+ 23,600	+ 7·2
ELECTRICITY GENERATED kWh.—millions	1,503·0	1,477·7	+ 25·3	+ 1·7
ELECTRICITY SALES kWh.—millions	1,207·7	1,201·3	+ 6·4	+ 0·5
NUMBER OF CONSUMERS (excluding Bulk Supplies) ..	311,172	300,465	+ 10,707	+ 3·5
AVERAGE kWh. SOLD PER CONSUMER—				
Domestic	838	793	+ 45	+ 5·7
Industrial	50,470	60,170	— 9,700	— 16·1
Commercial	2,934	2,769	+ 165	+ 5·9
All Consumers (excluding Bulk Supplies)	2,582	2,608	— 26	— 1·0
AVERAGE PRICE PER kWh. SOLD—				
Domestic d.	1·783	1·822	— 0·039	— 2·1
Industrial d.	0·830	0·812	+ 0·018	+ 2·2
Commercial d.	1·781	1·835	— 0·054	— 2·9
All Consumers (excluding Bulk Supplies) .. d.	1·246	1·227	+ 0·019	+ 1·5
NUMBER OF FARMS SERVED	8,772	7,467	+ 1,305	+ 17·5
MOTORS CONNECTED—				
Number	65,983	59,483	+ 6,500	+ 10·9
Horse-power	401,085	365,746	+ 35,339	+ 9·7
BRIQUETTES—				
Produced tons	431,344	416,715	+ 14,629	+ 3·5
Sold tons	442,578	427,935	+ 14,643	+ 3·4
TRAMWAY PASSENGERS	16,715,416	16,870,691	— 155,275	— 0·9

TWENTY-SIXTH ANNUAL REPORT.

*The Honorable P. J. Kennelly, M.L.C.,
Minister in Charge of Electrical Undertakings,
Melbourne.*

Sir,

In conformity with the provisions of Section 35 (b) of the State Electricity Commission Act No. 3776, we have the honour to present the Twenty-sixth Annual Report of the Commission covering the financial year ended 30th June, 1945, with Balance-sheet and Profit and Loss Account for the period.

Since our last Annual Report victory has come to the Allied cause; hostilities ceased, first in Europe and then in the Pacific.

Commissioners, with a deep sense of gratitude, issued on 15th August, 1945, a victory message, the text of which is as follows:—

“Now that our Empire is no longer at war, Commissioners join with all in the service of the Commission in deep thankfulness to the men of the armed forces who have secured conclusive victory.

“As an organization we now enter upon the future. For the major developmental task ahead the Commissioners find the greatest encouragement in the splendid work worthily done throughout the 1939–45 period by the Commission's loyal and willing body of personnel who safeguarded the continuity of its widespread operations under the stress of war.

“Congratulations and best wishes to all. May the joys of victory strengthen us all in our resolve to meet the problems of the future.”

One of the joys of victory will be the homecoming of our servicemen, especially those who were freed from prisoner-of-war camps when hostilities ceased.

There will be those who will not return, men who have fought and paid the supreme penalty in the allied cause: their sacrifice secured the victory and their names will be honoured for ever.

The names of those Commission men who died on service are recorded on the Roll of Honour which appears as a frontispiece to this Report.

Operating Conditions.—We are thankful to report that the war period passed without recourse to rationing of electricity, except for a few days following the bush fires at Yallourn in February, 1944. During the sixth and last year of war, the operation of power and briquette production plants continued under severe overload conditions. War-time difficulties in relation to supply of materials and labour continued in marked form during the year, adding to the already considerable accumulation of deferred maintenance, and further delaying such major construction works as the Kiewa hydro-electric development, additions to the plant at Newport generating station, and the extension of the Yallourn briquette factory.

Financial.—The net surplus for the year was £59,208 after appropriation had been made primarily for the following purposes:—

1. Strengthening of reserves to meet future known expenditure and unforeseen happenings: £300,000 has been reserved to aid rural development and £100,000 for contingencies.
2. To meet expenditure in respect of accumulated maintenance; £125,000 has been reserved towards this considerable future liability.

Electricity Supply.—Over 1,207 million kWh were sold in Victoria during the year, of which 98 per cent. was generated by the Commission's system. There are now 456,000 consumers, of whom 311,000 (68 per cent.) are supplied directly by the Commission.

As forecast in the 1942-43 report, requirements of non-permanent industrial and other establishments operating for war needs have fallen substantially during the year, with consequent effect on revenue. The year's overall increase in electricity sales of 6·35 million kWh. was accompanied by a decrease in sales to industry of no less than 13·47 million kWh.

As part of the Commission's war effort over 1,300 farms were connected under the Commonwealth food production programme: the highest number connected in any previous year was 941.

Shortage of Generating Resources.—The demand on the generating system almost doubled during the war, and the lack of reserve capacity for the system is apparent in the following :—

Assured capacity, with full provision for breakdown	308,000 kW.
Maximum demand recorded to 30th June, 1945	351,600 kW.
Maximum demand recorded on 11th July, 1945	377,100 kW.

This position exists despite the steady but slow progress with the following major plant installations :—

Kiewa.—No. 3 Development (originally planned for completion—autumn, 1942); two 12,000 kW turbo-generators—

First set	Completed—September, 1944.
Second set	Completed—April, 1945.

Newport.—Originally planned for completion—first set, 1941 ; second set, 1944 ; two 30,000 kW turbo-generators and boiler plant—

First set	Completed—April, 1945.
Second set	Awaiting shipment from England.

Briquette Factory Extensions.—Because of war exigencies planned progress has been seriously retarded, but the factory now is producing an additional 300 tons per day ; this will increase to the planned 600 tons per day when the project is completed at the end of 1945.

Development of Victorian Brown Coal Resources.—Progress with the Commission's investigations into the site for a new open cut and briquette factory, referred to in previous Annual Reports, is now sufficiently advanced to warrant the Commission in making a more detailed examination of an area south of Morwell, but this must be regarded as no more than a tentative choice of site, because much detailed study is yet necessary before it will be possible for the Commission to submit to the Government a definite recommendation including details and estimates of cost of this large-scale project. The full text of a statement recently issued by the Government appears on pages 10—11 of this report.

ANNUAL ACCOUNTS.

The net surplus for the year was £59,208, as compared with £124,872 for 1943-44. This amount remains after providing for the usual annual charges, including depreciation, sinking fund, provident fund, loan flotation expenses, administration of Electric Light and Power Act, expenditure on war emergency and precautionary measures, &c., and appropriations of £100,000 to Contingency Reserve, £300,000 to Rural Development Reserve and £125,000 to a Deferred Maintenance Reserve.

Electricity supply revenue totalled £5,259,881; an increase for the year of £158,250. Expenditure on account of Electricity Supply, exclusive of special expenditure and appropriations, amounted to £4,165,201—an increase of £79,565.

Revenue from briquette sales, after allowing for stocks on hand, amounted to £329,428—an increase of £12,582, and expenditure totalled £376,614—a decrease of £1,103.

Tramway results were:—Ballarat—loss, £2,758; Bendigo—loss, £15,674; and Geelong—loss, £3,071; a total loss of £21,503, as compared with £24,270 for the previous year. Tramways revenue increased by £3,519.

The General Profit and Loss Account, Balance-sheet and Schedules of Fixed Capital, of Loans raised by the Commission and of Debentures guaranteed by the Commission are contained in Appendices Nos. 1 to 4.

LOAN LIABILITY.

The total loan liability of the Commission at 30th June, 1945, was £20,997,826. The commitments involved are:—

	£
Liability to the State of Victoria	16,461,137
State Electricity Commission of Victoria Loans .. .	4,503,692
Municipal Debentures in respect of Undertakings acquired ..	32,997
	<hr/>
	£20,997,826

The loan liability has increased by £833,343, made up as follows:—

	£
No. 10 Loan—State Savings Bank of Victoria	1,000,000
Municipality Debentures in respect of undertakings acquired during year	4,852
Discount and flotation expenses on renewal loans (Treasury) ..	6,198
	<hr/>
	1,011,050
<i>Less—</i>	£
Reduction in indebtedness to State through National Debt Sinking Fund	141,051
Redemption of State Electricity Commission Loans .. .	20,426
Repayment of eighth instalment on £100,000 borrowed for tramway reconstruction	7,915
Redemption of Municipal Debentures guaranteed by Commission	4,845
Repayment of discount and flotation expenses	3,470
	<hr/>
	177,707
	<hr/>
	£833,343

RESERVES.

The Depreciation and Sinking Fund Reserves at 30th June, 1945, totalled £10,561,841, an increase of £902,342 for the year. Of the total, £1,258,850 was to the credit of the Commission in the National Debt Sinking Fund Reserve, £8,983,062 to the credit of the Depreciation Reserve (which, with the exception of £517,514 applied to the National Debt Sinking Fund Reserve, is invested in the business of the Commission), £264,511 to the credit of the State Electricity Commission Sinking Fund Reserve, and £55,418 to the credit of the Commission in the National Recovery Loan Fund Reserve.

As a further provision for unforeseen happenings of a major nature, an appropriation of £100,000, bringing the total up to £815,000, was made to the Contingency Reserve. Expenditure to 30th June, 1945 (£85,000) resulting from the Yallourn bush fires in February, 1944, was charged to this reserve. This reserve is invested outside the business in trustee securities.

The Rural Development Reserve, established in 1940-41 to facilitate post-war plans for extensions to rural areas, was strengthened by the transfer of £300,000, bringing the total of the reserve to £800,000.

CAPITAL EXPENDITURE.

After deductions for retirements and the writing out of non-productive expenditure, the total expenditure on capital works increased by £1,601,390. The principal increases were in the following accounts :—

	£
Coal production	250,194
Power Production, Steam Stations—Newport	363,310
Power Production, Water Stations—Kiewa	129,910
Transmission Systems—	
Main Transmission Systems	169,325
Provincial and Country Branches	66,848
Distribution Systems—	
Metropolitan	82,427
Provincial and Country Branches	227,973
Briquette Production : Factory Extension	82,200

WAR LOAN INVESTMENTS.

Investments in Commonwealth War Loans at 30th June, 1945, totalled £1,422,690. Of this sum, £457,750 is invested on behalf of the Staff Provident Fund ; the remainder, £964,940, is an investment of the Contingency Reserve and other funds.

FURTHER MAJOR DEVELOPMENT OF THE STATE'S BROWN COAL RESOURCES.

Commission's Annual Reports from 1942 onwards have referred to the Commission's recommendation to the Government, dated 20th October, 1941, arising from the Second Report of the Investigatory Committee on Yallourn Brown Coal for Essential Services. The Commission recommended that a new open cut and briquette factory be established and that borings and investigations should proceed in order to ascertain the most suitable site. Investigations consequential to the Commission's recommendation and to the Government's approval thereto in November, 1943, have proceeded.

Since the close of the financial year, the Government, on the advice of the Commission, has issued the following public statement relative to the progress of these investigations :—

“ It appeared that the most likely site for the proposed new open cut and briquette factory was in the Latrobe Valley south of the town of Morwell.

“ For some years past, the State Electricity Commission has been engaged in investigating the known brown coal resources of the State to determine the field most suitable for exploitation in connection with increased briquette production as a further step in the Government's policy of rendering Victoria independent of imported fuel. The Yallourn field is by no means approaching exhaustion, but it has been thought prudent to reserve that area for the present activities, including the modernization of the existing power station, and to develop a site elsewhere for a new briquette factory. This policy has the advantage, also, that the State will not be dependent on a single source of supply, but will have, in an emergency, an alternative fuel reserve.

“ Consideration has been given to all the major brown coal bearing areas in the State, but preliminary investigations having shown that Gippsland, and particularly the Latrobe Valley, offered the most favourable prospects, intensive boring was concentrated in that region. In the Latrobe Valley there were found to be three areas which could be exploited with economic success, namely, south of the town of Morwell, north of that town, and south-east of the town of Traralgon. All these areas contain very large deposits of brown coal easily accessible and readily convertible into briquettes. Large deposits also were proved to exist in the vicinity of Gelliondale, but, although these were very suitable for the application of open

cut mining methods, the poorer quality of the coal and its relatively greater distance from Melbourne, make this field less attractive than the deposits in the Latrobe Valley. The Gelliondale field, nevertheless, is of definite value as a potential source of fuel.

“A close examination of the characteristics of each field, including estimated costs of briquette production and an economic assessment of the several areas in relation to Yallourn and Melbourne, has led the Commission to the conclusion that it should concentrate its attention on an area south of Morwell as being the most favourable site for a new open cut and briquette factory. Investigation and borings are proceeding, and further study will be necessary before a final decision can be made, because the possibility of unforeseen factors emerging during the preparation of detailed plans and estimates must be kept in mind.

“The Morwell South area is unlikely to be found suitable for a power station, because cooling water is not readily available. But establishment of a new brown coal burning power station at a new site is not an immediate problem, and when it does become imminent, it may be necessary to develop an open cut probably in the vicinity of Traralgon. Ultimately, also, the area north of Morwell will be required either in association with the existing Yallourn Power Station or for other industries based upon brown coal.

“Eventually, all the main coal bearing areas of the Latrobe Valley will need to be resumed by the State, but for the initial exploitation of the Morwell South deposits it is likely that resumption would be confined to an area bounded by the main Gippsland railway on the north and extending, roughly, 2 to 3 miles south of Morwell and about the same distance east and west of that town. The town of Morwell itself would not be directly involved in the near future, but it must be recognized that, as the town is situated on workable coal, resumption may, after the passing of many decades, eventually be necessary. Landowners affected by resumption may be assured of compensation on a fair and equitable basis.”

The Commission's plans include, also, provision of homes for personnel engaged in the establishment and subsequent operation of the project, together with transport facilities and other subsidiary services. On these matters the Commission will enter into discussions with the Housing Commission, the Town and Country Planning Authority, when constituted, and other similar bodies having interests in the development of the district.

FUEL FOR POWER GENERATION.

War-time reports have referred to the critical situation which existed in Victoria in respect of supplies of sea-borne coal and the serious threat to continuity of electricity supply which had to be faced on numerous occasions. The Commission has throughout been gravely concerned, as, in the early war period, the whole of its considerable reserve stocks of coal were almost completely exhausted.

Recurring crises were experienced this year, but their consequences have been minimized by the conversion to briquette burning of metropolitan boiler plants as referred to in the last Annual Report. This conversion undoubtedly averted the rationing of electricity. In conformity with Commission policy, the increasing fuel requirements at its generating stations are receiving priority in relation to the additional output from the briquette factory.

The Commission again supplied the Victorian Railways Commissioners with electricity at off-peak periods; this service enabled them to conserve 16,000 tons of black coal.

UTILIZATION OF HUME WATERS FOR POWER GENERATION.

Commonwealth and State Ministers met in Melbourne on 21st and 22nd May, 1945, and adopted the proposal of the River Murray Commission that the capacity of the Hume Reservoir be increased from one and a quarter to two million acre feet. The State electricity authorities of New South Wales and Victoria have since agreed upon plans for a generating station at the weir to comprise two 21,000 kW turbo-generators and possibly a third set of like capacity. However, as stated in last year's report, the Hume waters would be used primarily for irrigation during the summer period when the demands for electricity are lowest. For the remaining period of the year, there would be no output of electricity from the proposed station.

HYDRO-ELECTRIC RESOURCES OF THE SNOWY RIVER.

A special committee appointed by the Government of New South Wales to investigate proposals for the utilization of the Snowy River waters in New South Wales has urged the diversion of the Snowy from a point near Jindabyne by a tunnel northwards to the Murrumbidgee River. This diversion would be made primarily for irrigation and water supply purposes, with which would be associated a very limited hydro-electric development.

As a very large proportion of the water of the Snowy River entering Victoria is gathered above Jindabyne, there would be no prospect of a hydro-electric development on the lower reaches of the river in Victoria if its upper waters were diverted to the Murrumbidgee. Actually, the proposal to divert the Snowy waters to the Murrumbidgee would mean the abandonment of a New South Wales project for the development of up to 250,000 kW for that State, and, in turn, the loss of power resources to Victoria of about 150,000 kW.

The Commonwealth Government also has under consideration its own proposals for the utilization of the Snowy River waters. The Victorian Government has requested the Commonwealth to appoint a Royal Commission representative of each Government concerned to report on the most advantageous use of the Snowy from a national standpoint, including a further proposal that the waters from its upper reaches be diverted into the Murray.

This latter proposal offers the prospect of providing adequately for irrigation and water supply, and, in addition, avoiding the severe curtailment of potential power resources inherent in the proposal for the diversion of water to the Murrumbidgee.

BUSH FIRE PROTECTION MEASURES.

At Yallourn, the water supply to the open cut has been improved by the provision of a supplementary pumping plant on the Latrobe River, and the reticulation system in the cut has been extended; further protection works have been carried out in timbered country adjacent to the Commission's territory, and grazing licences in territory to the north of Yallourn have been cancelled by the Government. The Town Fire Brigade is being placed on a permanently manned basis, and the water supply and reticulation of the Brown Coal Mine township has been improved.

For the protection of the Kiewa works, planned protection measures in progress include the establishment of fire control stations, the construction of access tracks and the controlled burning of the forest floor; a local fire brigade has been established and equipped.

LOCAL GOVERNMENT FOR YALLOURN.

The history of this matter was noted in our last Annual Report. During the year under review a Committee of the Cabinet examined in detail the practicability of granting Local Government rights and responsibilities to the people of Yallourn, as well as the right to own their own homes in the town and to take a greater part in the local trading arrangements for household needs. Towards the close of the financial year the Government brought down a proposal in relation to Local Government. In terms of this proposal the Commission has undertaken still to carry substantial financial obligations in regard to the local municipal functions; accordingly, the details are noted for purposes of official record in Appendix 12 of this Report.

On the 12th July, 1945, the Cabinet Committee, of which the chairman was the Honorable the Minister in charge of Electrical Undertakings, Mr. J. G. B. McDonald, M.L.A., visited Yallourn and informed the representatives of the residents of the Government's decision to take as soon as possible a poll of residents regarding the Government's proposal.

The residents also were notified that the Government found it impracticable to meet their request in regard to home ownership.

In the matter of trading, the Government intimated that as soon as possible additional shops would be built by the Commission in the town and leased to private traders. As soon as there is thus established a substantial measure of competition with the Yallourn General Store, now controlled by the Commission, the future of that store, and in particular whether it would pass to private enterprise or be converted to a co-operative store, would be considered.

At the July conference the residents were given the opportunity to study and to comment upon the Government's proposals for Local Government. Representatives of the residents submitted their comments during August, 1945, but, in seeking additional information regarding Local Government matters, sought to re-open the questions of housing ownership and trading control. Since then the matter of Local Government, which is essentially one of State policy, has been in abeyance through the subsequent changes of Government.

RESTRICTIONS ON ELECTRICAL DEVELOPMENT.

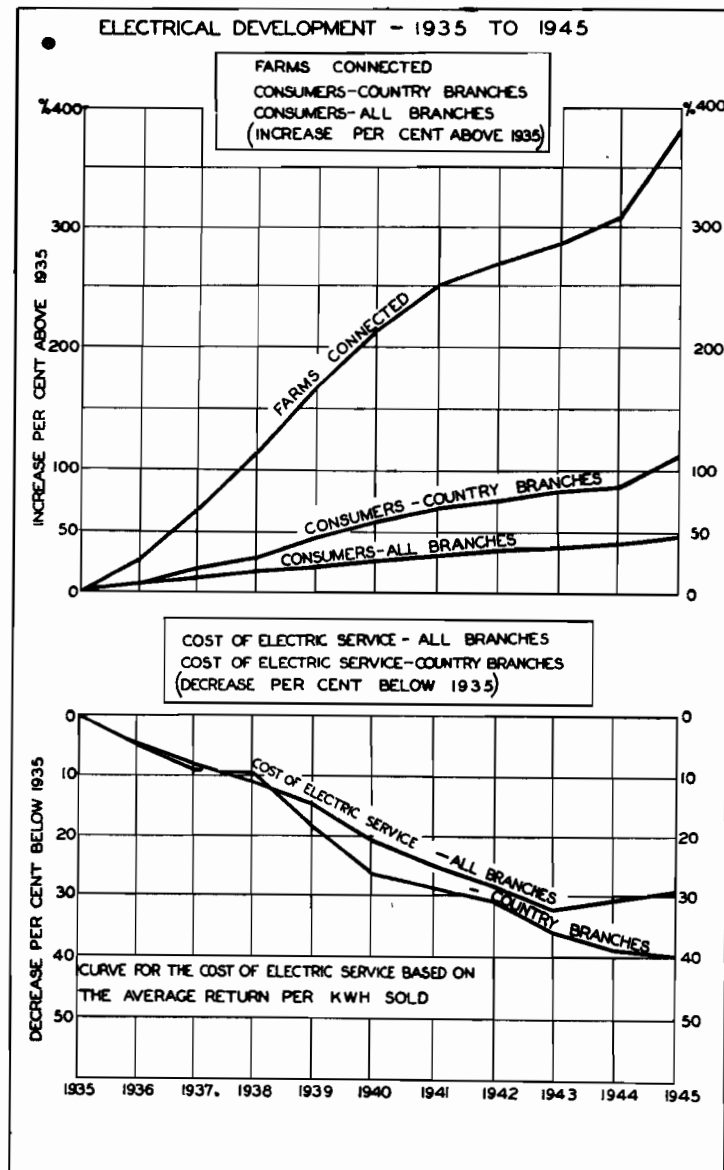
Because of war-time shortages of manpower and materials, line construction personnel and equipment were used almost wholly on extensions to farms approved by District War Agricultural Committees in accordance with the Commonwealth's plans to increase the production of foodstuffs. Over 1,300 farms were connected during the year; the highest number connected in any previous year was 941.

It is expected that, by the early months of 1946, the Commission will have sufficiently augmented its construction forces and its supplies of materials to permit some progress with its long-range programme for extension to country districts at present without supply of electricity.

The ten-year post-war programme provides for an additional 72,000 consumers in the extra-metropolitan area: this plan could be accomplished in seven or even five years if sufficient resources can be secured. In this regard, a survey of the electrical requirements of the north and north-west areas of the State, the Wimmera and the Hamilton-Coleraine-Casterton district is in progress. The Commission's Rural Development Reserve of £800,000 will be used to finance the war-time arrears of rural electrification included in the plan.

The following shows the extent of electrical development during the last decade:—

						Total Consumers.	Extra-Metropolitan Consumers.	Farms Supplied.
1934-35	213,669	59,179	1,375
1939-40	271,749	88,331	5,147
1944-45	311,172	113,721	8,772



ELECTRICITY SUPPLY TARIFFS.

A re-classification of country consumers for tariff purposes became effective as from the 1st July, 1944; all country consumers (including those in the main provincial cities) now fall within one or the other of two main tariff groups. Some 35,000 consumers benefited by this decision, which resulted in an initial loss of revenue of £27,000.

The average retail selling price in the areas served by the Commission is now 52 per cent. lower than in 1925, while the average price for domestic consumers has decreased by 67 per cent. This reduction in average price represents a saving to consumers of over four and a half million pounds, of which £700,000 is attributable directly to tariff reductions. The balance is the result of price reductions which as consumption increases follow under the Commission's tariffs.

A report dated March, 1945, on "Country Electrical Development in Victoria" dealing in particular with the Government's proposal to introduce a uniform system of tariffs for electricity supply throughout the State was submitted in response to the Government's request.

As a result of electrical development at Portsea, Sorrento, and Leongatha, consumers in those towns are now benefiting from the charges under the lower schedule of tariffs applicable to the provincial cities and larger towns.

THE COMMISSION AND THE WAR.

(a) *War Precautions.*—On the cessation of European hostilities on 8th May, and the removal of any Japanese threat to Australia, the Commission relaxed substantially its war precautions. The year's expenditure, which amounted to about £50,000, was confined almost entirely to the maintenance of a small Auxiliary Police Force and to the work of dismantling protection measures for personnel and plant.

(b) *Lighting Restrictions.*—Restrictions under Commonwealth National Security Regulations on the use of electricity for exterior lighting and for commercial purposes continued throughout the year.

(c) *Patriotic Fund—Staff and Employees.*—The State Electricity Commission Patriotic Fund continued its efforts on behalf of the Red Cross and the Australian Comforts Fund, and it is most pleasing to record that, through these endeavours and by separate local efforts at Yallourn, Ballarat, Bendigo, Geelong, and country centres, a total of £37,250 has now been subscribed to patriotic funds and 25,000 garments have been made and distributed.

YALLOURN TERRITORY.

Population.—4,473, of whom 3,601 are resident in the town of Yallourn.

Housing.—There are now 894 residences, of which 31 were erected during the year. Towards the 197 unfilled applications for homes, 50 residences are in course of erection. The Commission continues to be concerned with the housing shortage and is hopeful that this problem will be solved early in the post-war period.

Sewerage of Town.—War exigencies continue to retard any action to complete the sewerage of the town.

Hospital and Medical Services.—These are administered by the Yallourn Medical and Hospital Society, financed by regular contributions from all employees. The hospital accommodates 44 (emergency capacity 71) and the daily average number of occupied beds (38) was the same as last year.

COAL SUPPLY.**YALLOURN OPEN CUT—COAL PRODUCTION.**

						Tons.
1924-25	442,560
1929-30	1,767,261
1934-35	1,737,718
1939-40	3,944,515
1944-45	5,249,308

Coal Winning.—This year's operations brought the total coal excavated from the cut since the commencement of operations to 59·51 million tons. Of the coal won during the year, 3,527,060 tons were delivered to the Yallourn generating station and 1,722,248 tons to the briquette factory. The largest daily output was 19,973 tons on the 25th January, 1945.

Overburden Removal.—1,663,750 cubic yards of overburden were removed compared with 1,826,250 cubic yards during the previous year, bringing the total removed at the 30th June, 1945, to 23,396,950 cubic yards. The shortage of labour again curtailed operations.

The area of the open cut has increased from 432 to 453 acres at grass level and from 369 to 397 acres at the surface of the coal.

Old Open Cut.—47,063 tons of coal were produced and sold for industrial purposes, making a total of 1,572,292 tons produced to date.

Plant.—One of the two large electrically operated shovels damaged during the bush fire of February, 1944, has been reconditioned; the reconditioning of the second shovel is still in progress. A further shovel (5 cubic yard capacity) was procured from America and is in operation. Two additional electric locomotives, especially designed for coal transportation, and twelve overburden trucks are under construction: twelve new coal trucks were placed in service.

The construction of the conveyor belt system for coal transport from the open cut to the extended briquette factory is in an advanced stage. The section from No. 1 coal level to the briquette factory has been completed.

POWER PRODUCTION AND TRANSMISSION.

The interconnected generating stations at Yallourn, Newport, Spencer-street, Richmond, Geelong, Ballarat, Kiewa, and Sugarloaf-Rubicon comprise the State generating system; terminal stations are located at Richmond, Yarraville, Brunswick, Thomastown, Rubicon "A" and Geelong. The transmission system includes the lines from the power stations to the terminal stations and from the terminal stations to the main metropolitan substations, together with those interconnecting the main substations. Electricity is transmitted to the Commission's various Electricity Supply branches and also to those Melbourne municipal undertakings which purchase in bulk.

Under emergency conditions, frequency changers are used for supply to and from the Victorian Railways system (25 cycle), the maximum capacity being 22,000 kW.

The installed capacity of generating plant is as follows:—

<i>Thermal Stations—</i>						kW.
Yallourn, including Briquette Factory	..					183,000
Newport	108,000
Spencer-street	36,900
Richmond	15,000
Geelong	10,500
Ballarat	5,900
<i>Hydro-Electric Stations—</i>						
Sugarloaf-Rubicon	26,415
Kiewa (1st Stage)	24,000

The total dependable capacity of all stations at 30th June, 1945, was 370,000 kW.

Details of the loading (a) on generating stations throughout the State, and (b) on Commission's generating stations, are given in Appendix No. 11.

LOADING ON COMMISSION'S GENERATING STATIONS.

Generating Stations.	Maximum Demand (kW).		kW. Generated (Millions).	
	1944-45.	1943-44.	1944-45.	1943-44.
Yallourn* (Thermal)	187,000	188,000	1,133·2	1,088·0
Newport (Thermal)	89,500	71,600	92·1	83·3
Spencer-street (Thermal)	35,070	40,650	59·3	63·8
Richmond (Thermal)	15,530	15,600	40·2	44·5
Geelong (Thermal)	11,200	12,200	38·8	44·8
Ballarat (Thermal)	5,000	5,400	18·9	20·8
Sugarloaf-Rubicon (Hydro)	25,500	25,700	101·1	130·4
Kiewa (Hydro)	24,000	..	18·7	..
Total	351,600†	328,000†	1,502·3	1,475·6

* Including Briquette Factory.

†Maximum Coincident Demand (377,100 kW. on 11th July, 1945).

Because of the very dry season the output of the hydro-electric stations was lower than for 1943-44, notwithstanding that Kiewa commenced operation in September, 1944, and generated over 18 million kWh.

The replacement was authorized of Nos. 2, 4, and 5 turbo-alternators (total capacity 14,400 kW) at the Spencer-street generating station by a set of 15,000 kW capacity.

MAJOR EXTENSIONS PROGRAMME.

(PLANNED DEVELOPMENT—INSTALLED CAPACITY 237,000 kW.)

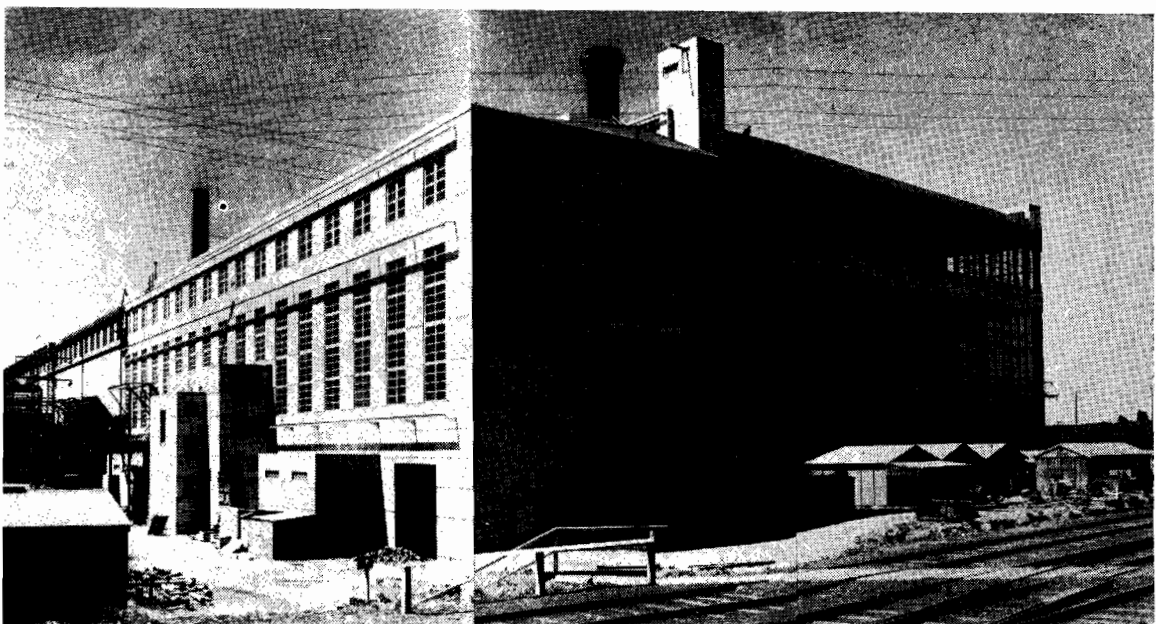
Newport Generating Station (Four-30,000 kW sets, Nos. 4, 5 6, and 7).

The new boiler house building has been completed. The generator rotor for No. 4 set, replacing one already reported as lost at sea through enemy action, was delivered in January and the machine was placed in service on the 19th April, 1945.

The No. 5 set (30,000 kW) has been manufactured in England and awaits completion of trials before shipment.

Specifications have been issued for the manufacture and installation of two further 30,000 kW turbo-generator sets (Nos. 6 and 7) and the necessary boiler plant.

The Brush-Ljungstrom 18,000 kW turbo-generator, placed in service last year, has operated satisfactorily.



Newport Generating Station. Building Extensions ("C" Station)—Completed 1945.

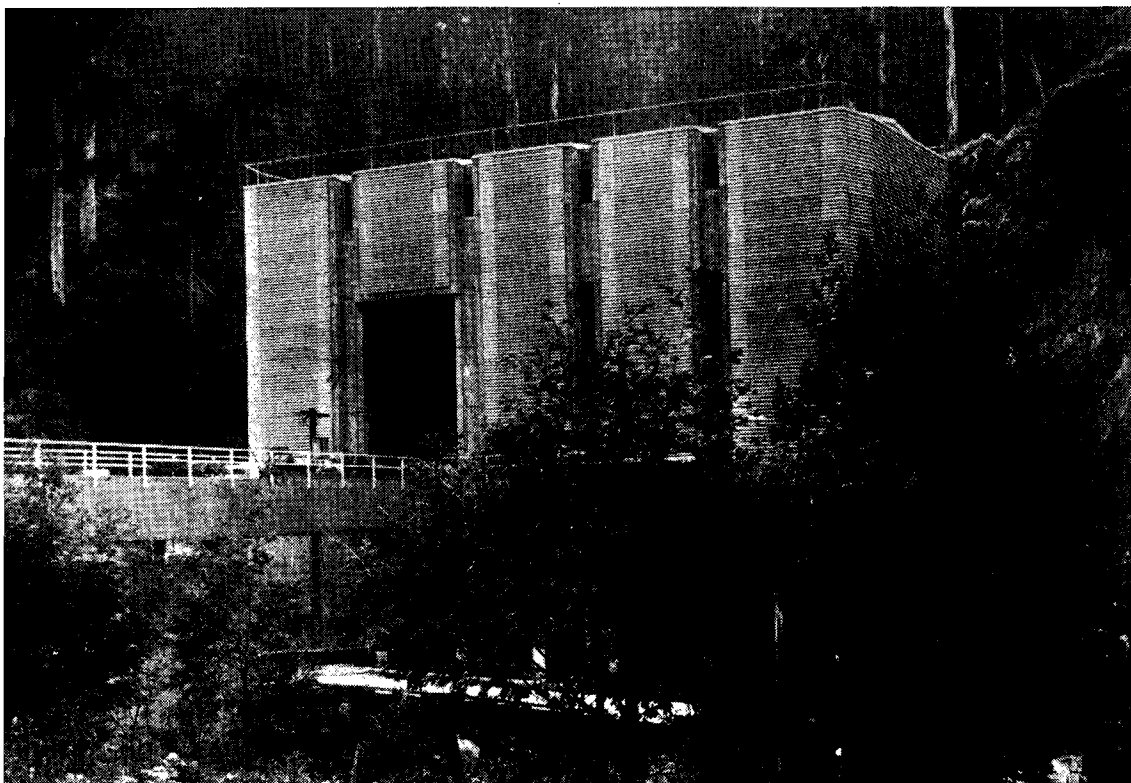
Kiewa Hydro-Electric Scheme.

(ULTIMATE DEVELOPMENT—INSTALLED CAPACITY 117,000 kW.)

No. 3 Development (Installed Capacity—24,000 kW).—The first turbo-generator was placed in service on the 1st September, 1944; the second on the 14th April, 1945. Both units are operating satisfactorily.

No. 4 Development (Installed Capacity—39,000 kW).—An area has been prepared for the power station works, head race tunnel portal and construction facilities; work on the tail race channel has been commenced.

Store facilities for this development were erected at Mt. Beauty, and the necessary construction plant is being procured.



No. 3 Generating Station (Installed Capacity 24,000 kW) Kiewa Hydro-Electric Scheme.

Main Transmission and Transformation.

Four 66 kV air-operated circuit breakers were installed at the Thomastown terminal station, replacing oil circuit breakers for the Geelong terminal station.

The erection of a new switchhouse and control building is in progress at the Brunswick terminal station and work has commenced at the site for a new terminal station at East Malvern.

Substation "BL" at Brooklyn is being equipped with permanent 6.6 kV switchgear and a second 7,500 kVA transformer. A new 3,000 kVA substation was erected at Sunshine to cope with additional loading.

ELECTRICITY SUPPLY.

ANALYSIS OF DEVELOPMENT.

Electricity sold to all consumers, including bulk supplies, increased by approximately six million kWh or 0.5 per cent. The smallness of this increment compared with those of the earlier war and pre-war years indicates the continuation of a downward trend of consumption at munition establishments and by industry. The following statistics of annual electricity sales show the extent of development since 1924-25 and the marked increase during the war period:—

						kWh (Millions).
1924-25	201.249
1928-29	359.875
1933-34	476.205
1938-39	730.426
1944-45	1,207.676

Domestic Class.—The average consumption per consumer in the Commission's supply areas has grown steadily during the war years, as follows:—

						Average Consumption per Domestic Consumer. kWh.
1940-41	658
1941-42	703
1942-43	756
1943-44	793
1944-45	838

There has been a greater use of electricity for domestic purposes despite Commonwealth restrictions on the manufacture and sale of electrical appliances.

Commercial Class.—Sales increased by 8·5 per cent. Additional loading at several large defence establishments grouped under this class and the reconnection of shops disconnected in earlier war years were the principal contributing factors.

Industrial Class.—The year's sales decreased by 3·0 per cent. because of reduced requirements for war production. This decrease, however, is but a small part of the war-time advance in sales to industry.

An additional 35,339 horse-power of electric motors was connected.

Mining.—National Security Regulations continued to restrict the gold mining industry. The number of consumers increased from 26 to 29, but sales decreased from 6·6 million kWh to 5·9 million kWh. Sales in 1939-40 were 17·7 million kWh.

Rural.—Reference is made earlier in this report to the progress of rural extension work under the Commonwealth Government's food production programme.

Public Lighting.—Further relaxation of restrictions under National Security Regulations and the connection of additional lamps increased consumption by 5·0 per cent.

COMMISSION'S ELECTRICITY SUPPLY UNDERTAKINGS FOR LOCAL DISTRIBUTION.

The following summary of statistical data relating to the nine branches of the Commission's Electricity Supply Department is compiled from information contained in this Report:—

Revenue increased by £123,022 (3·1 per cent.) to £4,154,769.

Sales of Electricity increased by 12,082,080 kWh (1·5 per cent.) to 804,498,024.

Consumers increased by 10,674 (3·6 per cent.) to 310,005.

Farms connected increased by 1,305 (17·5 per cent.) to 8,772.

Branch.	Area of Supply (Square Miles.)	Number of Consumers.	Electricity Sold kWh. (Millions).	Constructed this Year.				Number of Farms Supplied.
				Sub-stations.		Distribution Lines.		
				Number.	Capacity kVA	H.V. Route Miles.	L.V. Route Miles.	
Metropolitan	228·2	199,422	580·543	32	9,075	23·6	16·9	833
Ballarat	165·3	12,388	15·648	13	370	13·9	10·8	214
Bendigo	100·8	8,845	12·180	22	655	35·6	12·2	176
Geelong	121·7	14,987	35·844	11	285	8·9	4·6	252
Eastern Metropolitan	515·0	23,078	33·729	48	1,340	26·4	55·4	1,616
Gippsland	1,053·0	16,330	42·176	50	1,885	36·5	52·6	2,623
Midland	424·4	7,626	13·468	44	2,785	26·8	3·7	400
North Eastern.. .. .	1,270·8	16,045	53·511	139	5,805	41·0	57·1	1,328
South Western	830·0	11,284	17·399	148	5,752	139·2	13·2	1,330
Total	4,709·2	310,005	804·498	507	27,952	351·9	226·5	8,772

BRANCH TRANSMISSION AND DISTRIBUTION.

Conversion of the metropolitan system of supply from single phase to standard three phase was again limited to sub-stations serving consumers engaged in essential works or in relieving over-loaded single-phase systems. The conversion of twelve sub-stations was completed during the year and work was commenced on six others in the districts of Malvern, Brighton, Sandringham, St. Kilda, and Kew.

Two 2,500 kVA voltage regulators were installed, one at Morwell and one at Trafalgar.

ACQUISITION OF SUPPLY UNDERTAKINGS.

The undertakings at Warburton, Seymour, Carrum, and Yea were acquired, as from 1st July, 2nd October, 31st December, 1944, and 1st May, 1945, respectively.

TRAMWAYS—BALLARAT, BENDIGO, AND GEELONG.

A loss of £21,503 resulted from the operations of the three tramways systems, compared with £24,270 last year—a reduction of £2,767 (11·4 per cent.). The respective losses for Ballarat, Bendigo, and Geelong were £2,758, £15,674, and £3,071.

Total revenue was £146,605, an increase of £3,519 (2·5 per cent.). The number of passengers carried—16,715,416—decreased by 155,275 (0·9 per cent.), owing to reduced traffic at Ballarat, where fewer servicemen are now located.

Total expenditure was £168,108, an increase of £751 (0·4 per cent.) over last year.

BRIQUETTE PRODUCTION AND DISTRIBUTION.

						Tons.
1929-30	161,708
1934-35	288,240
1939-40	428,389
1944-45	431,344

Production.—The factory output—431,344 tons—was 14,629 tons higher than during the previous year, 1,722,098 tons of raw brown coal being used in the process. The proportion of coal to briquettes increased slightly from 3·87 to 1 last year to 3·99 to 1.

Except for a small quantity of household briquettes (1,563 tons) the whole output was of the industrial types. Production of the new type of “Y” industrial briquette increased from 115,197 tons last year to 174,339 tons, representing 40 per cent. of total production.

By-product electricity amounted to 76·131 million kWh, of which 54·707 million kWh were delivered to the main system, the remainder being used at the factory.

The factory, apart from the new section, operated for seven days per week throughout the year, including statutory holidays, with the exception of short periods for major overhaul and essential maintenance, and for twelve days after a serious fire in March, 1945.

Factory Extensions.—Portion of the extensions to the factory was operated from October, 1944, on a six-day week basis, ultimately increasing the daily output by 300 tons. The construction of the new cooling house is well advanced, and the installation of cooling plant is now in progress. An order was placed for the manufacture of two additional twin presses. Completion of this section will increase the capacity of the factory to over 600,000 tons per annum.

The conversion of the internal dust extraction system from wet to electrical separation is nearing completion for “A” section of the factory. A similar satisfactory conversion has already been made in “B” section. The dust so recovered will be used in the boiler furnaces.

Distribution—

Sales	442,578 tons
Revenue	£329,428
Expenditure	£376,614
Loss	£47,186

The loss arises chiefly from higher production costs and additional hours of working at overtime rates. The Commission, because of the Commonwealth's price fixation policy is not in the position to increase briquette prices to meet current losses. In pre-war years, over 100,000 tons per annum were sold on the higher priced domestic market, but in recent years this tonnage has been diverted to war industry and munition factories. There is no early prospect of domestic sales being resumed owing to the continued heavy demands of industry and the shortage generally of fuel.

INDUSTRIAL.

Wages employees at 30th June, 1945 :—

	Operation.	Construction.
Power Generation	665	445
Main Transmission Lines, Terminal and Sub-stations	225	246
Electricity Supply—Metropolitan Branch	175	121
Electricity Supply—Country Branches	272	256
Briquette Production and Distribution	378	25
Coal Winning—Yallourn	608	7
General Services and Workshops—Yallourn	550	214
General Services and Workshops elsewhere	627	223
Tramways—Ballarat, Bendigo, and Geelong	242	..
Total	3,742	1,537
Grand Total	5,279	

Labour available to the Commission has been far short of requirements: however, since the cessation of hostilities in the Pacific, the position has improved.

A five-day week was adopted as from the 8th January, 1945, for more than 1,000 employees in the Building Trades, Workshops, and other sections. Arrangements since have been made for a more general application of the five-day week where operations permit. The Commission granted an additional week's leave (now fourteen days) to wages employees as from 1st March, 1945.

There are 234 apprentices employed principally in the engineering trades; 37 were indentured during the year. Reports of the progress of apprentices generally were satisfactory. Fifty-one apprentices are serving with the various defence arms.

LONG-SERVICE LEAVE.

In October, 1943, the Commission approved of long-service leave for its personnel on the basis of six months' leave on full pay after completion of twenty years' continuous service, and a further thirteen weeks' leave for each additional ten years' continuous service.

Because of the war, it was not possible to give effect immediately to the granting of long-service leave, which was suspended until the cessation of hostilities. In cases of illness or other special circumstances, leave is being granted, and, as soon as the men of the fighting forces have been released to the Commission's service in substantial numbers, the provisions of this grant will be fully implemented.

PUBLIC SAFETY AND OTHER REGULATORY RESPONSIBILITIES.

Electric Light and Power Act, 1928.—At the close of the financial year 85 franchises were in force. Of these, 58 were issued to 40 Municipal Councils (several of which operate under more than one Order) and 27 were issued to 23 companies or persons.

The Governor-in-Council approved the revocation of the following Orders-in-Council :—

Order No.	Undertaker.	Area of Supply.	Reason for Revocation.
226	Upper Yarra Electric Supply Co. Pty. Ltd.	Warburton and environs	Undertaking transferred to State ownership on 1st July, 1944
76	Yea Shire Council	Yea Township ..	Undertaking transferred to State ownership on 1st May, 1945
151	Seymour Shire Council ..	Seymour, Shire of ..	Undertaking transferred to State ownership on 2nd October, 1944
106	Carrum Electric Supply Co. Ltd.	Aspendale, Chelsea, and Carrum	Undertaking transferred to State ownership on 31st December, 1944
112	Sidney Francis Block (trading as "Jeparit Electric Light and Power Station")	Jeparit and environs ..	Order expired. New Order No. 253 approved
99	Cocks Pioneer Gold and Tin Mines No Liability	Mining Leasehold ..	Undertaking had ceased to supply under terms of order on the 4th May, 1944

The Commonwealth, under its price stabilization plan, paid subsidies in respect of increased costs to the undertakings at Kilmore, Boort, Underbool, and Birchip. The first three undertakings received interim payments only. Applications were refused by the Commonwealth in respect of Murrayville, Kerang, and Quambatook, and it deferred consideration of the applications of several other supply authorities pending investigation of their finances.

Regular inspections of electrical undertakings are still in abeyance because of war conditions, but where supply conditions were unsatisfactory, or operating difficulties experienced, special investigations were made.

Electricity supply undertakings which have adopted the multiple earthed neutral system of protection were granted further extension of time because of inability to procure labour and materials for completion of the work.

Extensions to the plants at the Ararat, Swan Hill, and Stawell generating stations were approved.

Licensing of Electrical Mechanics.—Licences in force at 30th June, 1945: Grade "A"—2,092, Grade "B1"—87, Grade "B"—594, Grade "C"—539.

Two licensing examinations, each including theory and practice, were held.

Special conditional permits issued: 315 for periods not exceeding six months, and 417 for periods not exceeding twelve months.

Registration of Electrical Contractors.—At 30th June, 1945, 413 registrations were in force, 29 more than last year.

Electrical Approvals Board.—Under the Board's constitution two of its members retire each year. This year, Mr. W. H. Stock, representing the interests of fire underwriters, and Mr. A. W. Henderson, representing the workers in the electrical trade, were re-appointed to the Board.

Electrolysis Mitigation.—Regular meetings of the Main Committee were discontinued in December, 1941, owing to war conditions, but the Technical Sub-Committee has continued to investigate electrolysis conditions and has instituted additional remedial measures. The number of faults reported showed no significant change.

COMMISSIONERS.

Mr. Andrew W. Fairley was re-appointed by the Government as a Commissioner for a period of three years as from the 9th March, 1945.

Mr. T. P. Strickland, B.E., M.Sc., M.I.E.E., M.I.E. AUST., M.E.I.C., M.AMER.I.E.E., was re-appointed by the Government as a Commissioner for a period of twelve months as from the 16th December, 1944.

DEATH OF SIR ARTHUR ROBINSON, K.C.M.G.

The Commission records its profound sorrow and regret at the death on 17th May, 1945, of Sir Arthur Robinson, who, among others associated with him at the time, made a pre-eminent contribution to the foundation of the State's electrical undertakings and was responsible for the concept of the State system as it exists today. As Solicitor-General he drafted the legislation which established the Commission, and this, with further supplementary legislation, stands as a permanent monument to his foresight, as upon it the development and progress of the last 25 years have been based. As the Commission's first Minister in the pioneering period from 1919-1925 he was closely associated with the establishment of the Commission's works and major policy, and his guidance and statesmanship will ever be remembered with gratitude within the Commission.

PERSONNEL.

The Commission has recorded its pleasure at the election of Mr. R. Liddelow, its Manager, as President of the Electricity Supply Association of Australia.

.

In July, 1944, there was constituted the State Electricity Commission Officers Association, which, as representative of all sections of the Commission's staff, has been accorded official recognition by the Commission.

Returned Servicemen in the employment of the Commission who fought in the 1914-18 and 1939-45 wars formed a sub-branch of the Returned Sailors' Soldiers' and Airmen's Imperial League of Australia, and, in December, 1944, the sub-branch was accorded official recognition in respect of representations made to the Commission on matters affecting Servicemen in its employ.

.

Mr. T. L. Gurr, Office Manager, Geelong Branch, retired on 2nd February, 1945, and Mr. A. L. Hargrave, Chief Distribution Engineer, Electricity Supply Department, on 31st August, 1945. These officers were appointed by the Melbourne Electric Supply Co. Ltd. in 1900 and 1904 respectively, and transferred to the Commission when that undertaking was acquired in 1930.

Mr. J. E. Orr, Engineer Inspector, Coal Supply Department, after 24 years' service, retired on 28th February, 1945; Mr. W. A. Tainsh, Associate Publicity Officer, retired on 31st March, 1945.

During the year the following important staff promotions were made :—

Mr. N. T. Jewell	Chief Distribution Engineer, Electricity Supply Department, to succeed Mr. A. L. Hargrave.
Mr. A. C. Champion	Acting Office Manager, Geelong Branch, to succeed Mr. T. L. Gurr.
Mr. E. C. Kirton	Acting Office Manager, South Western Branch, to succeed Mr. A. C. Champion.
Mr. W. R. G. Campigli	Acting Office Manager, Midland Branch, to succeed Mr. E. C. Kirton.

The Commission has pleasure in recording its appreciation of the loyal and efficient service rendered by its personnel under the stress of extremely difficult conditions which continued during the year.

.

For the period covered by this Report, the Honorable J. G. B. McDonald, M.L.A., was Minister in charge of Electrical Undertakings. Since the close of the period, he has been succeeded by the Honorable T. K. Maltby, M.L.A. : on the 21st November, 1945, Mr. Maltby was, in turn, succeeded by the Honorable P. J. Kennelly, M.L.C., to whom this Report is addressed.

We have the honour to be,

Sir,

Your obedient servants,

G. G. JOBBINS, Chairman.

ANDREW W. FAIRLEY, Commissioner.

T. P. STRICKLAND, Commissioner.

W. D. CHAPMAN, Commissioner.

W. J. PRICE, Secretary.

23rd November, 1945.

GENERAL BALANCE-SHEET AS AT 30th JUNE, 1945.

There is a contingent asset and a contingent liability in respect of securities lodged as bona fides under 'contracts to the extent of £67,868 held by the Bank on the Commission's behalf.

H. S. KILFOYLE, Chief Accountant.

R. LIDDELOW, Manager.

AUDITOR-GENERAL'S CERTIFICATE.

In accordance with Section 32 of Act 3776 the accounts of the State Electricity Commission of Victoria have been audited. In my opinion the above Balance-sheet presents a true and correct view of the affairs of the undertaking at the 30th June, 1945.

E. A. PEVERILL, Auditor-General.
22nd November, 1945.

STATE ELECTRICITY COMMISSION OF VICTORIA.
SCHEDULE OF FIXED CAPITAL AT 30th JUNE, 1945.

								Expenditure during 1944-45.	Total Expenditure 30/6/45.
								£ s. d.	£ s. d.
Coal Production—									
Yallourn	251,851 12 4	1,646,028 2 11
Briquette Production—									
Yallourn	84,127 13 1	1,676,177 3 8
Power Production—Steam Stations—									
Geelong	410 6 9	348,163 6 0
Newport	366,289 11 8	2,855,494 0 2
Richmond	230 13 11	169,327 17 0
Yallourn	18,292 14 6	5,127,245 0 3
Power Production—Water Stations—									
Kiewa	152,321 17 11	1,393,737 15 5
Sugarloaf-Rubicon	4,435 1 1	825,890 12 5
Eastern Metropolitan (Warburton)	3,601 17 3	5,166 17 3
Transmission Systems—									
Main Transmission Systems	148,464 5 9	4,787,604 18 9
Ballarat Branch	3,714 10 1	49,543 8 2
Bendigo Branch	7,485 9 1	16,302 0 6
Eastern Metropolitan Branch	13,188 16 9	235,998 18 6
Geelong Branch	2,635 9 1	32,078 5 8
Gippsland Branch	14,557 0 5	358,481 10 4
Metropolitan Branch	2,611 8 3	13,210 5 7
Midland Branch	7,076 1 6	131,236 3 11
North-Eastern Branch	32,681 13 3	548,512 17 1
South-Western Branch	35,717 10 9	489,508 2 2
Distribution Systems—									
Ballarat Branch	12,578 5 0	226,502 18 5
Bendigo Branch	11,027 0 10	163,870 16 6
Eastern Metropolitan Branch	53,817 5 9	514,167 19 11
Geelong Branch	5,170 11 0	357,022 10 2
Gippsland Branch	41,110 11 2	492,158 4 4
Metropolitan Branch	108,525 17 5	4,486,269 15 2
Midland Branch	16,578 10 9	197,173 2 1
North-Eastern Branch	92,881 15 1	434,763 11 1
South-Western Branch	35,836 16 2	298,302 16 0
Yallourn and Brown Coal Mine	2,360 15 7	30,192 14 10
Tramways Systems—									
Ballarat Branch	286 2 2	47,678 2 5
Bendigo Branch	941 18 6	28,326 2 4
Geelong Branch	671 4 0	100,560 6 5
General—									
Ballarat Branch	110 3 3	29,778 11 4
Bendigo Branch	10 5 4	48,485 12 10
Eastern Metropolitan Branch	2,074 2 11	34,347 13 7
Geelong Branch	387 19 4	28,107 16 4
Gippsland Branch	4,982 10 9	43,557 15 0
Kiewa Branch	58,105 5 11	87,023 1 5
Metropolitan Branch	8,070 11 10	687,080 14 2
Midland Branch	49 14 10	6,096 1 8
North-Eastern Branch	398 2 1	47,676 17 5
South-Western Branch	105 17 5	29,983 16 3
Yallourn	108,313 2 9	1,648,997 2 6
Head Office	68,795 1 9	611,131 14 1
Deduct—Proportion of Cost of Extension Payable by Consumer								1,782,883 5 0	31,388,963 2 0
								6,163 15 6	91,833 6 6
								1,776,719 9 6	31,297,129 15 6

Note.—Construction Work in Progress included in above figures, is shown separately in the Balance-sheet:—

At 30th June, 1944	£3,078,967 17s. 3d.
At 30th June, 1945	£1,501,771 11s. 9d.

STATE ELECTRICITY COMMISSION OF VICTORIA.

DEBENTURES AND INSCRIBED STOCK.

LOANS RAISED UNDER THE AUTHORITY OF THE STATE ELECTRICITY COMMISSION
ACTS Nos. 4087 and 4512.

Loan No.	Original Issue.	Amount Subscribed to 30th June, 1945.	Rate.	Term.	Due.	Sinking Fund.	Redeemed to 30th June, 1945.	Outstanding at 30th June, 1945.
	£	£	%	Yrs.		%	£ s. d.	£ s. d.
State Electricity Commn. of Victoria, Loan No. 1	600,000	600,000	3½	20	1954	1	50,731 0 0	549,269 0 0
" " " " " 2	382,000	382,000	3½	20	1954	1	38,200 0 0	343,800 0 0
" " " " " 3	100,000	100,000	4	15	1951	1	9,000 0 0	91,000 0 0
" " " " " 4	800,000	800,000	3½	10	1948	1	56,000 0 0	744,000 0 0
" " " " " 5	900,000	900,000	4½	10	1949	1	..	900,000 0 0
" " " " " 6	200,000	200,000	4½	10	1949	1	10,886 18 0	189,113 2 0
" " " " " 7	150,000	150,000	4½	15	1955	1	..	150,000 0 0
" " " " " 8	250,000	250,000	3·8125	10	1950	1	13,490 3 3	236,509 16 9
" " " " " 9	300,000	300,000	3·4375	16	1957	1	..	300,000 0 0
" " " " " 10	1,000,000	1,000,000	3·375	10	1955	1	..	1,000,000 0 0
	4,682,000	4,682,000					178,308 1 3	4,503,691 18 9

ISSUED BY UNDERTAKINGS ACQUIRED BY THE STATE ELECTRICITY COMMISSION OF VICTORIA

Municipality.	Loan No.	Actual Rate.	Rate under Financial Emergency Act.	Original Issue.	Date of Acquisition.	Outstanding at Date of Acquisition.	Redeemed Since Date of Acquisition.	Outstanding at 30th June, 1945.
		%	%	£		£ s. d.	£ s. d.	£ s. d.
Bendigo Branch.								
Marong Shire	2	5½	5	1,700	1.7.31	1,591 17 11	588 16 0	1,003 1 11
Eaglehawk Borough	8	4½	4½	3,500	1.10.35	3,150 13 3	2,126 14 3	1,023 19 0
" " " " " 9	3½	3½		4,500	1.10.35	4,345 9 8	1,793 5 0	2,552 4 8
				9,700		9,088 0 10	4,508 15 3	4,579 5 7
Eastern Metropolitan Branch.								
Flinders Shire	5	6	4½	3,500	1.10.27	3,356 10 7	3,066 15 11	289 14 8
Frankston and Hastings Shire	16	6½	5·0375	5,000	21.2.28	4,665 15 5	4,447 14 4	218 1 1
Healesville Shire	2	6	4½	8,000	1.4.33	6,215 0 0	3,540 0 0	2,675 0 0
" " " " " 3	6½	4½		2,000	"	1,585 0 0	890 0 0	695 0 0
" " " " " 9	5½	5		3,000	"	2,728 11 2	970 15 10	1,757 15 4
Lillydale Shire	16	6½	5·0375	3,000	1.4.25	2,869 12 7	1,749 4 11	1,120 7 8
" " " " " 16	6½	5·0375		2,000	"	1,913 1 7	1,166 3 2	746 18 5
Mornington Shire	11	5½	5	1,000	1.8.30	895 16 8	775 16 9	119 19 11
				27,500		24,229 8 0	16,606 10 11	7,622 17 1
Gippsland Branch.								
Maffra Shire	1	4½	4½	6,500	1.9.24	5,660 0 11	3,382 14 2	2,277 6 9
" " " " " 2	5½	5		1,000	"	877 5 7	780 0 4	97 5 3
				7,500		6,537 6 6	4,162 14 6	2,374 12 0
Metropolitan Branch.								
Werribee Shire	4	5½	4½	1,000	10.4.24	856 16 2	823 10 1	33 6 1
Midland Branch.								
Kyneton Shire	3	5½	4½	12,000	1.10.29	10,830 0 0	5,570 0 0	5,260 0 0
Newham and Woodend Shire	2	5	5	750	1.8.29	750 0 0	300 0 0	450 0 0
				12,750		11,580 0 0	5,870 0 0	5,710 0 0
North-Eastern Branch.								
Mansfield Shire	6	6	5	1,200	1.6.28	1,200 0 0	..	1,200 0 0
Numurkah Shire	7	7	5·425	2,500	1.10.31	1,922 4 11	1,720 2 8	202 2 3
Rutherglen Shire	4	6	5	350	1.2.26	296 1 8	271 17 8	24 4 0
Towong Shire	1	4½	4½	6,500	1.11.40	4,565 0 0	1,340 17 9	3,224 2 3
Wangaratta Borough	8	6½	4½	6,500	12.3.27	6,078 12 8	3,487 3 11	2,591 8 9
" " " " " 9	6	4½		1,500	"	1,412 2 5	828 8 11	583 13 6
Yea Shire	3	6½	5	6,000	1.5.45	3,390 19 7	..	3,380 19 7
" " " " " 4	5½	5		500	"	292 19 3	..	292 19 3
" " " " " 5	5½	5		1,000	"	331 19 8	..	331 19 8
" " " " " 8	4½	4½		1,200	"	836 0 0	..	836 0 0
				27,250		20,326 0 2	7,648 10 11	12,677 9 3
GRAND TOTAL				85,700		72,617 11 8	39,620 1 8	32,997 10 0

STATE ELECTRICITY COMMISSION OF VICTORIA.

TABULATION OF CAPITAL, REVENUE, AND OPERATING ACCOUNTS.

Year ended 30th June.	Capital.			Revenue.					Operating Expenditure Including Writings Off, &c.	+ Surplus. — Deficit.	
	Capital Expenditure.	Loan Liability.	Reserves.	Electricity Supply.	Briquetting.	Tramways.	Miscellaneous.	Total.		Year.	To date.
1925	£ 7,759,825	£ 8,293,765	£ 43,936	£ 617,286	£ 40,468	£ ..	£ 41,602	£ 699,356	£ 963,638	£ — 264,282	£ — 322,744
1926	9,032,464	10,120,794	67,616	713,252	122,379	..	19,476	855,107	1,125,077	— 269,970	— 592,714
1927	10,742,104	11,849,698	262,942	975,362	179,184	..	16,124	1,170,670	1,367,324	— 196,654	— 789,368
1928	12,762,939	13,567,546	493,935	1,262,787	192,256	..	10,698	1,465,741	1,463,868	+ 1,873	— 787,495
1929	14,530,684	15,126,107	832,618	1,427,751	226,186	..	7,858	1,661,795	1,657,181	+ 4,614	— 782,881
1930	16,397,608	16,778,413	1,151,139	1,624,255	264,459	..	9,153	1,897,867	1,892,601	+ 5,266	— 777,615
1931	18,553,592	19,286,428	1,593,462	2,234,756	276,930	30,971	2,236	2,544,893	2,562,846	— 17,953	— 795,568
1932	19,327,273	19,735,177	2,135,205	2,456,696	357,056	35,450	717	2,849,919	2,846,888	+ 3,031	— 792,537
1933	19,667,259	19,668,146	2,823,912	2,577,547	313,435	34,180	97	2,925,259	2,921,830	+ 3,429	— 789,108
1934	19,748,318	19,109,659	3,332,096	2,717,992	309,936	33,510	74	3,061,512	3,028,393	+ 33,119	— 755,989
1935	20,305,078	19,527,309	3,757,812	2,995,707	297,858	77,121	10,098	3,380,784	3,374,306	+ 6,478	— 749,511
1936	20,866,242	18,806,748	4,380,047	3,164,703	348,650	78,207	8,180	3,599,740	3,572,012	+ 27,728	— 721,783
1937	21,638,314	18,682,415	5,008,027	3,339,560	337,227	76,142	7,500	3,760,429	3,721,528	+ 38,901	— 682,882
1938	22,698,893	19,242,265	5,672,343	3,539,974	394,634	75,567	1,008	4,011,183	3,957,354	+ 53,829	— 629,053
1939	24,268,880	19,422,927	6,449,707	3,685,107	377,022	78,664	1,099	4,141,892	4,020,992	+ 120,900	— 508,153
1940	25,369,679	20,524,010	7,300,198	3,894,893	400,125	78,211	3,700	4,376,929	4,250,416	+ 126,513	— 381,640
1941	26,116,795	20,678,339	8,218,078	4,241,264	379,847	89,571	13,374	4,724,056	4,563,376	+ 160,680	— 220,960
1942	26,955,737	20,523,266	9,256,460	4,657,450	330,756	109,955	55,488	5,153,649	5,069,227	+ 84,422	— 136,538
1943	28,345,527	20,348,116	10,460,227	4,935,602	341,631	135,900	76,955	5,490,088	5,348,695	+ 141,393	+ 4,855
1944	29,695,740	20,164,482	11,547,016	5,101,631	316,847	143,086	67,216	5,628,780	5,503,908	+ 124,872	+ 129,727
1945	31,297,130	20,997,826	12,902,334	5,259,881	329,428	146,605	63,247	5,799,161	5,739,953	+ 59,208	+ 188,935

STATE ELECTRICITY COMMISSION OF VICTORIA.

ELECTRICITY SALES—REVENUE—CONSUMER STATISTICS.

Year Ended 30th June.	Sales—kWh. (Millions).						Revenue.			Consumer Statistics—excluding Bulk Supplies.							Number of Farms Supplied.		
	Bulk Supplies.	Public Lighting.	Domestic.	Industrial.	Com-mercial.	Total.	Total.	Per kWh. Sold.			Population of Area of Supply.	Number of Consumers.	Percentage of Con- sumers to Population.	kWh. Sold per Consumer (Average).		Motors Connected.			
								Domestic.	Industrial.	Com-mercial.				Domestic.	Industrial.	Com-mercial.		Number.	H.P.
1938 ..	241·988	12·950	110·597	258·274	54·080	677·889	£ 3,528,396	d. 2·559	d. 0·884	d. 2·714	1,018,000	249,244	24·5	540	57,820	1,611	32,386	227,903	3,426
1939 ..	257·394	14·282	122·134	273·372	59·915	727·097	3,685,538	2·420	0·877	2·567	1,050,000	260,733	24·8	566	53,540	1,734	36,282	245,697	4,867
1940 ..	285·031	16·804	141·172	311·916	67·224	822·147	3,881,022	2·165	0·848	2·338	1,080,000	271,749	25·2	626	53,730	1,917	41,530	275,458	5,147
1941 ..	311·546	16·516	155·726	367·438	73·547	924·773	4,241,264	2·059	0·819	2·262	1,104,000	284,373	25·8	658	56,920	2,081	46,114	299,988	5,771
1942 ..	369·236	10·509	173·951	441·734	78·168	1,073·598	4,657,452	1·973	0·800	2·112	1,123,000	292,341	26·0	703	62,300	2,245	50,465	322,283	6,131
1943 ..	404·121	11·694	192·067	483·305	87·821	1,179·008	4,935,602	1·869	0·785	1·908	1,141,000	296,717	26·0	756	65,920	2,626	54,285	345,924	7,032
1944 ..	422·287	15·984	203·979	466·137	92·938	1,201·325	5,101,631	1·822	0·812	1·835	1,149,000	300,465	26·1	793	60,170	2,769	59,483	365,746	7,467
1945 ..	417·193	16·782	220·247	452·664	100·790	1,207·676	5,259,890	1·783	0·830	1·781	1,193,000	311,172	26·1	838	50,470	2,934	65,983	401,085	8,772
Metropolitan 1945	0·785	13·212	164·431	346·250	55·865	580·543	2,704,636	1·541	0·815	1·727	752,984	199,422	26·48	927	86,740	3,083	40,812	247,683	833
1944	0·644	12·759	155·126	366·268	53·528	588·325	2,694,491	1·576	0·797	1·740	726,357	198,102	27·27	878	99,987	2,978	38,050	238,480	755
Ballarat 1945	..	0·431	3·930	6·623	4·664	15·648	131,598	3·425	1·131	1·950	52,375	12,388	23·65	393	22,682	2,513	2,522	12,664	214
1944	..	0·393	3·569	7·223	4·890	16·075	129,798	3·543	1·047	1·933	52,366	11,926	22·77	369	29,603	2,653	2,366	11,917	161
Bendigo 1945	..	0·488	2·904	6·554	2·234	12·180	92,095	3·375	0·908	2·323	33,904	8,845	26·09	397	39,244	1,894	1,769	12,924	176
1944	..	0·486	2·819	7·750	2·194	13·049	89,651	3·535	0·765	2·355	32,804	8,514	25·95	366	77,501	1,858	1,601	11,946	111
Geelong 1945	..	0·472	6·309	24·340	4·723	35·844	213,242	2·944	0·817	2·379	58,500	14,987	25·62	501	100,166	2,345	4,603	31,209	252
1944	..	0·465	5·909	23·531	4·687	34·592	206,511	3·009	0·816	2·379	58,760	14,706	25·03	476	111,523	2,362	4,493	30,888	209
Eastern Metrop'tn 1945	1·057	0·609	16·806	6·583	8·674	33·729	255,897	2·035	1·253	1·798	71,828	23,078	32·13	950	8,386	3,299	2,034	11,890	1,616
1944	1·991	0·484	13·920	5·408	7·692	29·495	223,969	2·081	1·236	1·820	63,368	18,737	29·57	898	9,244	3,268	1,646	9,616	1,398
Gippsland 1945	..	0·399	8·455	26·895	6·427	42·176	236,436	2·325	0·908	1·733	66,227	16,330	24·66	747	12,349	2,629	5,125	29,838	2,623
1944	..	0·362	7·478	22·920	5·663	36·423	216,959	2·472	0·938	1·885	65,202	15,475	23·73	685	11,646	2,374	4,649	26,726	2,414
Midland 1945	..	0·297	2·976	6·988	3·207	13·468	94,722	2·941	0·934	1·980	36,911	7,626	20·66	510	39,038	2,287	1,482	9,808	400
1944	..	0·260	2·704	6·781	2·777	12·522	89,811	3·052	0·900	2·205	36,271	7,197	19·84	483	64,580	2,028	1,249	7,931	246
North-Eastern 1945	14·955	0·511	7·130	19·368	11·527	53·511	296,013	2·629	0·947	1·573	67,574	16,045	23·74	625	22,440	3,960	5,004	35,100	1,328
1944	13·348	0·472	6·189	18·147	8·202	46·358	259,724	2·748	0·924	1·779	63,374	14,231	22·46	587	25,924	3,001	3,108	19,136	1,091
South-Western 1945	..	0·293	5·749	9·043	2·314	17·399	130,130	2·473	1·115	2·506	48,440	11,284	23·29	702	8,848	1,373	2,551	9,787	1,330
1944	..	0·247	5·025	8·109	2·196	15·577	120,833	2·603	1·126	2·612	46,000	10,443	22·70	646	9,770	1,341	2,246	8,926	1,082
Total 1945	16·797	16·712	218·690	452·664	99·635	804·498	4,154,769	1·787	0·852	1·797	1,188,743	310,005	26·08	836	43,189	2,909	65,902	400,903	8,772
1944	15·983	15·928	202·539	466·137	91·829	792·416	4,031,747	1·826	0·830	1·852	1,144,502	299,331	26·15	791	51,656	2,745	59,408	365,566	7,467

Note.—Above figures do not include allowances for unread meters prior to 1941.

**STATE ELECTRICITY COMMISSION OF VICTORIA.
STANDARD TARIFFS AS AT 1ST JULY, 1945.**

Tariffs.	Metropolitan.		Provincial City and Town.		Country.	
	Standard Metropolitan Tariffs.		Ballarat, Bendigo, Geelong, and Large Towns.		Smaller Towns and Rural Areas.	Miscellaneous.
	1		2		3	4
Residential Tariff (Domestic and Commercial Residential Premises)— Service charge per month per assessable room Rate per kWh. Maximum overall rate per kWh.	11d. 0·9d. 5·0d.		1s. 2d. 1·25d. 8·0d.		1s. 2d. 1·4d. 8·0d.	Tariffs for the following centres are the same as shown in Column No. 2, except the Residential Tariff:— Croydon Heathmont Ringwood
Commercial and Industrial Lighting — Block Tariff—rates per kWh. (based on monthly consumption) ..	First 20 at 4d. Balance at 3d.		First 100 at 5d. Balance at 3·5d.		First 100 at 5·5d. Next 200 at 4·5d. Balance at 3·5d.	Tariffs for the following centres are the same as shown in Column No. 3, except:— Kilsyth and Montrose (Residential Tariff) Lara and Lara Lake (Commercial and Industrial Power and Heating)
Commercial and Industrial—Power and Heating — Block Tariff—rates per kWh. (based on monthly consumption) ..	First 200 at 2d. Next 4,800 at 1·2d. 20,000 at 0·9d. 100,000 at 0·8d. Balance at 0·7d.		First 200 at 2·25d. Next 4,800 at 1·5d. 20,000 at 1·0d. 100,000 at 0·8d. Balance at 0·7d.		First 50 at 2·5d. Next 150 at 2·25d. 4,800 at 1·5d. 20,000 at 1·0d. 100,000 at 0·9d. Balance at 0·75d. 10 p.m.—6 a.m.—0·35d. 5s.	Details of tariffs for above centres will be supplied on request.
Prescribed hours—rate per kWh. Rental for Two-rate meter per month	11 p.m.—7 a.m.—0·3d. 5s.		10.30 p.m.—6.30 a.m.—0·35d. 5s.			
Maximum Demand Tariff (see Note (2) below)	£9 10s. per kW. per annum 0·225d. per kWh. 500kW. (Minimum Demand Charge). Reset monthly					
Commercial Cooking Tariff —per kWh.	0·9d.		1·25d.		1·4d.	
Water Heating —Night Tariff per kWh.	11 p.m.—7 a.m.—0·35d.		10.30 p.m.—6.30 a.m.—0·45d.		10 p.m.—6 a.m.—0·45d.	
Minimum Charge	2s. 6d.		3s.		3s. 6d.	

* In Ballarat, Bendigo, and Geelong only; elsewhere 10 p.m.—6 a.m.

SPECIAL INDUSTRIAL ALL-PURPOSES TARIFF.

Applicable throughout all areas of supply.

Block Tariff—rates per kWh. (based on monthly consumption)

First	20 at 4d.
Next	480 at 3d.
"	4,500 at 1·9d.
"	20,000 at 0·9d.
"	100,000 at 0·8d.
Balance	at 0·7d.
11 p.m.—7 a.m.—0·3d.	5s.

Prescribed hours—rate per kWh. ..
Rental per Two-rate meter per month ..

A consumer adopting the Special Industrial All-Purposes Tariff must agree to pay a minimum charge of £10/5/10 per month, which will cover any consumption up to the first 1,000 kWh., irrespective of the hours during which the consumption may be recorded.

NOTES.—1. Details regarding the application of the above tariffs are shown in the Commission's published tariff schedules which are available on request.

2. The Maximum Demand Tariff is available only to consumers entering into a five-year agreement providing for high tension supply and for monthly payments based on the minimum demand indicated or half the stipulated rate of supply, whichever is the greater.

STATE OF VICTORIA.

ELECTRICITY SUPPLY UNDERTAKINGS AT 30TH JUNE, 1945.

SUMMARY.

	Population.	Consumers.		*Kilowatt-hours Sold.	
		Number.	Percentage of Grand Total.	Number.	Percentage of Grand Total.
STATE ELECTRICITY COMMISSION OF VICTORIA—					
Metropolitan	744,105	197,451	43·25	571,058,038	49·39
Provincial Cities	124,769	31,800	6·96	57,940,942	5·01
Country	324,342	81,921	17·95	161,483,622	13·96
TOTAL	1,193,216	311,172	68·16	790,482,602	68·36
OTHER UNDERTAKINGS—					
Metropolitan (receiving Bulk Supply from State Electricity Commission of Victoria)	417,000	118,321	25·92	343,836,425	29·74
Country (Local Generation).. .. .	108,000	27,003	5·92	21,852,582	1·90
TOTAL	525,000	145,324	31·84	365,689,007	31·64
GRAND TOTAL	1,718,216	456,496	100·00	1,156,171,609	100·00

* Retail sales to Victorian consumers by Electricity Supply undertakings.

CENTRES SERVED BY STATE ELECTRICITY COMMISSION OF VICTORIA.

Municipality or Centre.	Branch.	Location of Officer-in-Charge.	System of Supply.	Population.	Number of Consumers.	Tariffs as per Appendix No. 7 Column No.	Date Supply First Undertaken by Commission.
Metropolitan.							
Brighton	Metro.	Melbourne ..	A.C., 3 ph. and ph.	744,105	197,460	1	1.9.30
Broadmeadows (Fawkner and Glenroy and portions of North Essendon and Pascoe Vale only)	"	" ..	A.C., 3 ph.. ..				1.8.22
Camberwell	"	" ..	A.C., 3 ph. and 1 ph.				1.9.30
Caulfield	"	" ..	A.C., 3 ph. and 1 ph.				1.9.30
Collingwood	"	" ..	A.C., 3 ph. ..				1.9.30
Essendon	"	" ..	A.C., 3 ph. ..				1.8.22
Fitzroy	"	" ..	A.C., 3 ph. ..				1.9.30
Hawthorn	"	" ..	A.C., 3 ph. and 1 ph.				1.9.30
Kensington/Flemington	"	" ..	A.C., 3 ph. ..				1.8.22
Kew	"	" ..	A.C., 3 ph. and 1 ph.				1.9.30
Malvern	"	" ..	A.C., 3 ph. and 1 ph.				1.9.30
Moorabbin	"	" ..	A.C., 3 ph. ..				1.9.30
Mordialloc	"	" ..	A.C., 3 ph. ..				1.9.30
Mulgrave (part)	"	" ..	A.C., 3 ph. ..				1.9.30
Oakleigh	"	" ..	A.C., 3 ph. ..				1.9.30
Prahran	"	" ..	A.C., 3 ph. and 1 ph.				1.9.30
Richmond	"	" ..	A.C., 3 ph. ..				1.9.30
St. Kilda	"	" ..	A.C., 3 ph. and 1 ph.				1.9.30
Sandringham	"	" ..	A.C., 3 ph. ..				1.9.30
South Melbourne	"	" ..	A.C., 3 ph. ..				1.9.30
Sunshine	"	Sunshine ..	A.C., 3 ph. ..				1.3.27
Ballarat.							
City of Ballarat (including Alfredton, Ballarat East, Ballarat North, Brown Hill, Canadian and Mt. Pleasant)	Ball.	Ballarat ..	A.C., 3 ph. .. D.C., 3 wire ..	40,910	10,065	2	1.7.34
Borough of Sebastopol	"	" ..	A.C., 3 ph. ..				
Ballarat Shire (Wendouree only)	"	" ..	A.C., 3 ph. ..				

CENTRES SERVED BY STATE ELECTRICITY COMMISSION OF VICTORIA—continued.

Municipality or Centre.	Branch.	Location of Officer-in-Charge.	System of Supply.	Population.	Number of Consumers.	Tariffs as per Appendix No. 7 Column No.	Date Supply First Undertaken by Commission.
Bendigo.							
City of Bendigo (including Golden Square, Long Gully and White Hills)	Bend.	Bendigo ..	A.C., 3 ph. ..	32,469	8,619	2	1.7.34
Borough of Eaglehawk ..	"	" ..	A.C., 3 ph. ..				1.2.36
Huntly Shire (Portion only, including Epsom)	"	" ..	A.C., 3 ph. and 1 ph. ..				19.5.37 (Epsom 29.12.39)
Marong Shire (Portion only, including Kangaroo Flat)	"	" ..	A.C., 3 ph. ..				1.7.34
Strathfieldsaye (Portion only) ..	"	" ..	A.C., 3 ph. ..				1.7.34
Geelong.							
City of Geelong	Geel.	Geelong ..	A.C., 3 ph. .. D.C., 3 wire ..	51,390	13,101	2	1.9.30 (Fyansford) 10.10.38
City of Geelong West ..	"	" ..	A.C., 3 ph. ..				
Newtown and Chilwell ..	"	" ..	A.C., 3 ph. ..				
Corio Shire (North Geelong, North Shore and Fyansford)	"	" ..	A.C., 3 ph. ..				
South Barwon Shire (Belmont, Grovedale and Highton)	"	" ..	A.C., 3 ph. ..				
Bellarine Shire (Whittington) ..	"	" ..	A.C., 3 ph. ..				
Country.							
Acheron	N/E.	Alexandra ..	A.C., 1 ph. ..	70	16	3	24.11.37
Agnes	Gipps.	Foster ..	A.C., 1 ph. ..	100	27	3	1.11.38
Airey's Inlet	S/W.	Lorne ..	A.C., 1 ph.* ..	40	24	3	24.12.36
Airly	Gipps.	Sale ..	A.C., 1 ph. ..	100	31	3	16.6.37
Alexandra	N/E.	Alexandra ..	A.C., 3 ph. ..	998	325	3	11.4.27
Allansford	S/W.	Warrnambool ..	A.C., 1 ph.* ..	400	87	3	20.11.24
Altona	Metro.	Werribee ..	A.C., 3 ph. and 1 ph. ..	2,700	671	2	9.12.24
Alvie	S/W.	Colac ..	A.C., 1 ph.* ..	130	26	3	15.10.24
Anglesea	S/W.	Lorne ..	A.C., 1 ph.* ..	90	84	3	21.12.36
Archie's Creek	Gipps.	Korumburra ..	A.C., 3 ph. and 1 ph. ..	250	34	3	1.9.40
Ardmona	N/E.	Shepparton ..	A.C., 3 ph. and 1 ph. ..	355	195	3	25.3.38
Arundel	Mid.	Bacchus Marsh ..	A.C., 1 ph. ..	(See Keilor)		3	21.11.35
Ascot	Ball.	Ballarat ..	A.C., 1 ph. ..	25	7	3	7.12.38
Aspendale	E/M.	Chelsea ..	A.C., 3 ph. ..	1,140	448	2	31.12.45
Avoca	Mid.	Maryborough ..	A.C., 3 ph. ..	886	261	3	1.8.40
Bacchus Marsh	Mid.	Bacchus Marsh ..	A.C., 3 ph. and 1 ph. ..	2,631	580	3	3.6.41
Baddaginnie	N/E.	Benalla ..	A.C., 1 ph. ..	92	21	3	23.7.36
Badger Creek	E/M.	Healesville ..	A.C., 1 ph. ..	160	41	3	1.4.33
Bairnsdale	Gipps.	Bairnsdale ..	A.C., 3 ph. and 1 ph. ..	4,300	1,252	2	1.4.27
Bairnsdale Rural	Gipps.	Bairnsdale ..	A.C., 1 ph. ..	200	4	3	13.2.36
Bald Hills	Ball.	Ballarat ..	A.C., 1 ph. ..	25	3	3	13.7.38
Palintore	S/W.	Colac ..	A.C., 1 ph.* ..	50	8	3	1.6.37
Ballan	Ball.	Ballarat ..	A.C., 3 ph. and 1 ph. ..	960	185	3	1.3.40
Ballarat Rural	Ball.	Ballarat ..	A.C., 3 ph. ..	90	19	3	1.7.34
Ballendella	N/E.	Rochester ..	A.C., 1 ph. ..	150	59	3	20.3.40
Balmattum	N/E.	Benalla ..	A.C., 1 ph. ..	34	10	3	8.10.37
Barker's Creek	Mid.	Castlemaine ..	A.C., 1 ph. ..	44	4	3	15.12.44
Barnawartha	N/E.	Wodonga ..	A.C., 1 ph. ..	283	33	3	7.10.27
Barwon Heads	Geel.	Queenscliff ..	A.C., 1 ph. ..	450	255	3	6.9.24
Batesford	Geel.	Geelong ..	A.C., 1 ph. ..	150	28	3	28.2.39
Bayles	Gipps.	Koo-wee-rup ..	A.C., 3 ph. and 1 ph. ..	220	74	3	11.9.35
Bayswater	E/M.	Ringwood ..	A.C., 1 ph. ..	466	243	3	24.7.26
Beaconsfield	E/M.	Dandenong ..	A.C., 1 ph. ..	251	80	3	18.6.28
Beeac	S/W.	Colac ..	A.C., 1 ph. ..	470	106	3	21.5.24
Belgrave	E/M.	Belgrave ..	A.C., 3 ph. and 1 ph. ..	1,877	960	2	24.8.25
Bena	Gipps.	Korumburra ..	A.C., 3 ph. and 1 ph. ..	340	85	3	10.7.30
Benalla	N/E.	Benalla ..	A.C., 3 ph. ..	4,843	1,231	2	1.5.26
Benalla Rural	N/E.	Benalla ..	A.C., 1 ph. ..	90	26	3	26.5.37
Bennison	Gipps.	Foster ..	A.C., 1 ph. ..	80	19	3	29.10.38
Berwick	E/M.	Dandenong ..	A.C., 1 ph. ..	1,027	249	3	7.5.28
Birregurra	S/W.	Colac ..	A.C., 1 ph. ..	400	116	3	30.10.24
Bittern	E/M.	Frankston ..	A.C., 1 ph. ..	153	24	3	22.12.37
Boisdale	Gipps.	Maffra ..	A.C., 1 ph. ..	520	155	3	13.7.37
Bona Vista	Gipps.	Warragul ..	A.C., 1 ph. ..	90	31	3	30.12.38
Bonbeach	E/M.	Chelsea ..	A.C., 3 ph. ..	754	302	2	31.12.45
Bonegilla	N/E.	Wodonga ..	A.C., 3 ph. and 1 ph. ..	40	12	3	18.12.40
Bonnie Doon	N/E.	Alexandra ..	A.C., 1 ph. ..	270	42	3	31.1.41
Bookar	S/W.	Camperdown ..	A.C., 1 ph. ..	30	2	3	10.8.37
Boolarra	Gipps.	Traralgon ..	A.C., 3 ph. and 1 ph. ..	400	70	3	29.10.24
Boolarra South	Gipps.	Leongatha ..	A.C., 1 ph. ..	90	17	3	1.8.40
Boronia	E/M.	Ringwood ..	A.C., 1 ph. ..	671	376	3	23.1.27
Bostock's Creek	S/W.	Camperdown ..	A.C., 1 ph.* ..	50	15	3	15.12.24

CENTRES SERVED BY STATE ELECTRICITY COMMISSION OF VICTORIA—continued.

Municipality or Centre.	Branch.	Location of Officer-in-Charge.	System of Supply.	Population.	Number of Consumers.	Tariffs as per Appendix No. 7 Column No.	Date Supply First Undertaken by Commission.
Country—continued.							
Bowen Vale	Mid.	Maryborough	A.C., 3 ph. and 1 ph.	50	5	3	10.5.40
Bowser	N/E.	Wangaratta ..	A.C., 3 ph. ..	90	4	3	23.4.34
Braeside	Metro. and E/M.	Dandenong ..	A.C., 3 ph. and 1 ph.	73	27	3	27.6.30
Brandy Creek	Gipps.	Warragul ..	A.C., 1 ph. ..	57	12	3	15.2.39
Briagolong	Gipps.	Maffra ..	A.C., 1 ph. ..	550	71	3	5.3.37
Briar Hill	E/M.	Greensborough	A.C., 3 ph. ..	311	120	3	12.5.26
Bridgewater	Bend.	Bendigo ..	A.C., 3 ph. and 1 ph.	300	94	3	27.4.40
Bright	N/E.	Myrtleford ..	A.C., 3 ph. ..	1,570	212	3	1.12.41
Broadmeadows	Metro.	Melbourne ..	A.C., 3 ph. and 1 ph.	350	70	3	18.11.35
Bruthen	Gipps.	Lakes Entrance	A.C., 1 ph. ..	600	106	3	1.10.30
Buffalo River	N/E.	Myrtleford ..	A.C., 3 ph. ..	40	5	3	24.1.45
Bulla	Mid.	Bacchus Marsh	A.C., 1 ph. ..	195	15	3	10.11.36
Bullock Swamp	S/W.	Colac ..	A.C., 1 ph.* ..	50	14	3	12.9.24
Buln Buln	Gipps.	Warragul ..	A.C., 1 ph. ..	164	51	3	1.12.30
Bundalaguah	Gipps.	Sale ..	A.C., 1 ph. ..	250	44	3	13.11.36
Bundoora	E/M.	Greensborough	A.C., 1 ph. ..	62	40	3	31.12.27
Bungaree	Ball.	Ballarat ..	A.C., 3 ph. ..	150	36	3	14.5.40
Bung Bong	Mid.	Maryborough	A.C., 3 ph. and 1 ph.	20	6	3	21.4.41
Buninyong	Ball.	Ballarat ..	A.C., 1 ph. ..	650	112	3	14.1.37
Bunyip	Gipps.	Koo-wee-rup ..	A.C., 1 ph. ..	775	124	3	15.10.28
Burramine	N/E.	Yarrawonga ..	A.C., 1 ph. ..	72	4	3	12.9.35
Byrneside	N/E.	Shepparton ..	A.C., 1 ph. ..	63	28	3	24.5.37
Caldermeade	Gipps.	Koo-wee-rup ..	A.C., 1 ph. ..	150	55	3	6.9.35
Campbellfield	Metro.	Melbourne ..	A.C., 3 ph. and 1 ph.	350	46	3	14.9.36
Campbell's Creek	Mid.	Castlemaine ..	A.C., 1 ph. ..	389	22	3	28.11.41
Camperdown	S/W.	Camperdown ..	A.C., 3 ph. ..	3,600	817	2	30.12.23
Camperdown Rural	S/W.	Camperdown ..	A.C., 3 ph. and 1 ph.*	1,800	389	3	9.1.36
Caramut	S/W.	Terang ..	A.C., 1 ph.* ..	170	23	3	12.8.38
Carisbrook	Mid.	Maryborough	A.C., 3 ph. and 1 ph.	230	121	3	24.11.37
Carlsruhe	Mid.	Kyneton ..	A.C., 1 ph. ..	40	3	3	13.9.44
Carranballac	S/W.	Terang ..	A.C., 1 ph.* ..	60	6	3	18.10.39
Carrum	E/M.	Chelsca ..	A.C., 3 ph. ..	1,074	431	2	31.12.45
Castlemaine	Mid.	Castlemaine ..	A.C., 3 ph. and 1 ph.	6,460	1,364	2	31.12.29
Catani	Gipps.	Koo-wee-rup ..	A.C., 1 ph. ..	125	45	3	27.10.36
Chelsca	E/M.	Chelsca ..	A.C., 3 ph. ..	2,890	1,135	2	31.12.45
Chewton	Mid.	Castlemaine ..	A.C., 3 ph. and 1 ph.	700	77	3	23.9.38
Chiltern	N/E.	Rutherglen ..	A.C., 3 ph. ..	1,200	164	3	1.9.26
Chocolyn	S/W.	Camperdown ..	A.C., 1 ph. ..	20	2	3	14.1.38
Clarkefield	Mid.	Bacchus Marsh	A.C., 1 ph. ..	14	6	3	13.3.45
Clayton	Metro. and E/M.	Dandenong ..	A.C., 3 ph. and 1 ph.	1,010	187	3	30.4.26
Clayton South	Metro.	Melbourne ..	A.C., 3 ph. ..	30	4	3	10.11.44
Clematis	E/M.	Belgrave ..	A.C., 1 ph. ..	45	33	3	24.8.34
Cloverlea	Gipps.	Trafalgar ..	A.C., 1 ph. ..	215	64	3	7.4.30
Clunes	Ball.	Ballarat ..	A.C., 3 ph. ..	1,180	228	3	9.2.38
Clydebank	Gipps.	Sale ..	A.C., 1 ph. ..	100	21	3	9.4.36
Cobden	S/W.	Camperdown ..	A.C., 3 ph. ..	760	247	3	26.3.24
Cobram	N/E.	Cobram ..	A.C., 3 ph. ..	1,040	270	3	1.10.28
Cobrico	S/W.	Camperdown ..	A.C., 1 ph.* ..	20	1	3	22.12.38
Colac	S/W.	Colac ..	A.C., 3 ph. and 1 ph.	6,000	1,670	2	1.9.23
Colac Rural	S/W.	Colac ..	A.C., 3 ph. and 1 ph.	2,000	421	3	9.1.36
Coldstream	E/M.	Healesville ..	A.C., 3 ph. and 1 ph.	110	38	3	1.7.33
Congupna	N/E.	Shepparton ..	A.C., 3 ph. ..	58	18	3	7.9.34
Coragulac	S/W.	Colac ..	A.C., 1 ph.* ..	100	18	3	30.4.24
Cora Lynn	Gipps.	Koo-wee-rup ..	A.C., 3 ph. and 1 ph.	300	92	3	9.8.35
Cororooke	S/W.	Colac ..	A.C., 3 ph. ..	400	63	3	27.3.24
Corunnun	S/W.	Colac ..	A.C., 1 ph. ..	20	4	3	12.7.44
Couangalt	Mid.	Bacchus Marsh	A.C., 3 ph. and 1 ph.	(See Gisborne)		3	1.8.37
Cowwarr	Gipps.	Traralgon ..	A.C., 3 ph. and 1 ph.	350	82	3	8.11.24
Cranbourne	E/M.	Dandenong ..	A.C., 1 ph. ..	632	116	3	12.9.28
Cressy	S/W.	Colac ..	A.C., 1 ph. ..	300	52	3	19.11.41
Creswick	Ball.	Ballarat ..	A.C., 3 ph. and 1 ph.	1,665	282	3	24.11.37
Crib Point	E/M.	Frankston ..	A.C., 1 ph. ..	1,531	175	3	23.8.29
Crossley	S/W.	Port Fairy ..	A.C., 1 ph.* ..	80	14	3	16.3.38
Croydon	E/M.	Ringwood ..	A.C., 3 ph. and 1 ph.	2,302	860	4	1.4.25
Cudgee	S/W.	Warrnambool..	A.C., 1 ph.* ..	40	3	3	7.12.38
Dalmore	Gipps.	Koo-wee-rup ..	A.C., 3 ph. and 1 ph.	150	30	3	29.1.37
Dalyston	Gipps.	Korumburra ..	A.C., 1 ph. ..	170	35	3	15.11.40
Dandenong	E/M.	Dandenong ..	A.C., 3 ph. and 1 ph.	5,920	1,860	2	1.10.23
Darlington	S/W.	Camperdown ..	A.C., 1 ph.* ..	100	14	3	22.4.38
Darnum	Gipps.	Trafalgar ..	A.C., 3 ph. ..	208	44	3	20.12.24
Dawson	Gipps.	Maffra ..	A.C., 1 ph. ..	30	6	3	16.4.37
Daylesford	Ball.	Daylesford ..	A.C., 3 ph. ..	3,000	740	2	31.10.40
Daylesford Rural	Ball.	Daylesford ..	A.C., 3 ph. ..	60	12	3	21.12.44
Deer Park	Metro.	Sunshine ..	A.C., 3 ph. ..	455	79	3	14.2.29
Dennington	S/W.	Warrnambool..	A.C., 3 ph. and 1 ph.	320	64	3	1.2.29
Derrinallum	S/W.	Camperdown ..	A.C., 1 ph. ..	200	65	3	20.4.38
Devenish	N/E.	Yarrawonga ..	A.C., 3 ph. ..	208	42	3	14.2.40
Diamond Creek	E/M.	Greensborough	A.C., 1 ph. ..	514	133	3	10.5.29

CENTRES SERVED BY STATE ELECTRICITY COMMISSION OF VICTORIA—continued.

Municipality or Centre.	Branch.	Location of Officer-in-Charge.	System of Supply.	Population.	Number of Consumers	Tariffs as per Appendix No. 7 Column No.	Date Supply First Undertaken by Commission.
Country—continued.							
Digger's Rest	Mid.	Bacchus Marsh	A.C., 3 ph. and 1 ph.	103	25	3	15.3.29
Dingee	Bend.	Bendigo ..	A.C., 1 ph. ..	250	26	3	9.11.44
Dingley	E/M.	Dandenong ..	A.C., 3 ph. and 1 ph.	234	51	3	10.10.29
Donnybrook	E/M.	Greensborough	A.C., 1 ph. ..	106	20	3	11.3.41
Dookie	N/E.	Shepparton ..	A.C., 1 ph. ..	284	69	3	8.3.37
Driffield	Gipps.	Traralgon ..	A.C., 1 ph. ..	100	19	3	6.4.38
Dromana	E/M.	Sorrento ..	A.C., 3 ph. and 1 ph.	1,239	318	3	8.12.27
Drouin	Gipps.	Warragul ..	A.C., 3 ph. ..	1,255	310	3	1.10.24
Drouin Rural	Gipps.	Warragul ..	A.C., 1 ph. ..	117	34	3	13.11.28
Drouin West	Gipps.	Warragul ..	A.C., 1 ph. ..	50	18	3	18.2.39
Drysdale	Geel.	Queenscliff ..	A.C., 1 ph. ..	1,200	214	3	13.2.24
Dumbalk	Gipps.	Leongatha ..	A.C., 3 ph. and 1 ph.	150	49	3	14.9.36
Dumbalk North	Gipps.	Leongatha ..	A.C., 1 ph. ..	100	81	3	7.8.39
Dunkeld	S/W.	Terang ..	A.C., 1 ph. ..	370	79	3	10.8.39
Dunolly	Mid.	Maryborough	A.C., 3 ph. ..	625	181	3	31.3.38
East Oakleigh	E/M.	Dandenong ..	A.C., 3 ph. and 1 ph.	118	40	1 and 3	19.7.26
Eastern View	S/W.	Lorne ..	A.C., 1 ph.* ..	40	10	3	7.9.39
Echuca	N/E.	Echuca ..	A.C., 3 ph. ..	5,140	1,031	2	10.11.24
Echuca Rural	N/E.	Echuca ..	A.C., 1 ph. ..	250	54	3	12.11.36
Edithvale	E/M.	Chelsea ..	A.C., 3 ph. ..	1,400	568	2	31.12.45
Eildon Weir	N/E.	Alexandra ..	A.C., 1 ph. ..	115	20	3	28.4.39
†Eldorado	N/E.	Wangaratta ..	A.C., 3 ph. ..	204	25	3	1.4.39
Elliminyt	S/W.	Colac ..	A.C., 1 ph.* ..	(See Colac)		2	1.7.24
Ellinbank	Gipps.	Warragul ..	A.C., 1 ph. ..	65	33	3	9.9.36
Elphinstone	Mid.	Castlemaine ..	A.C., 1 ph. ..	111	11	3	4.11.38
Eltham	E/M.	Greensborough	A.C., 1 ph. ..	766	260	3	12.8.26
Emerald	E/M.	Belgrave ..	A.C., 1 ph. ..	307	134	3	7.8.34
Epping	E/M.	Greensborough	A.C., 1 ph. ..	143	57	3	15.7.36
Euroa	N/E.	Euroa ..	A.C., 3 ph. ..	3,232	552	3	20.3.28
Eurobin	N/E.	Myrtleford ..	A.C., 3 ph. and 1 ph.	70	15	3	1.8.44
Exford	Mid.	Bacchus Marsh	A.C., 1 ph. ..	(See Melton)		3	20.12.39
Ferny Creek	E/M.	Belgrave ..	A.C., 1 ph. ..	180	35	3	2.9.27
Fish Creek	Gipps.	Foster ..	A.C., 3 ph. and 1 ph.	370	109	3	9.7.38
Flinders	E/M.	Mornington ..	A.C., 1 ph. ..	504	95	3	28.10.38
Flynn	Gipps.	Traralgon ..	A.C., 1 ph. ..	150	39	3	5.9.38
Foster	Gipps.	Foster ..	A.C., 3 ph. and 1 ph.	700	186	3	30.4.38
Frankston	E/M.	Frankston ..	A.C., 3 ph. and 1 ph.	5,700	1,860	2	21.2.28
Freshwater Creek	S/W.	Lorne ..	A.C., 1 ph.* ..	20	4	3	30.4.41
Gainsborough	Gipps.	Warragul ..	A.C., 1 ph. ..	125	23	3	28.9.36
Gapsted	N/E.	Myrtleford ..	A.C., 3 ph. ..	100	28	3	13.4.44
Garfield	Gipps.	Koo-wee-rup ..	A.C., 1 ph. ..	600	96	3	1.8.29
Garvoc	S/W.	Terang ..	A.C., 1 ph.* ..	150	17	3	25.9.37
Geelong Rural	Geel.	Geelong ..	A.C., 3 ph. and 1 ph.	100	13	3	10.10.38
Geelongla	S/W.	Camperdown ..	A.C., 1 ph.* ..	30	4	3	6.12.44
Girgarre	N/E.	Kyabram ..	A.C., 3 ph. ..	259	45	3	19.5.38
Gisborne	Mid.	Bacchus Marsh	A.C., 3 ph. and 1 ph.	1,100	145	3	1.10.28
Glen Alvie	Gipps.	Korumburra ..	A.C., 1 ph. ..	250	32	3	23.12.40
Glen Forbes	Gipps.	Korumburra ..	A.C., 3 ph. ..	300	5	3	11.3.43
Glenegarry	Gipps.	Traralgon ..	A.C., 3 ph. and 1 ph.	150	70	3	14.8.28
Glenormiston	S/W.	Terang ..	A.C., 3 ph. ..	100	19	3	10.9.29
Glenvale	E/M.	Greensborough	A.C., 1 ph. ..	30	16	3	12.4.40
Glen Waverley	E/M.	Dandenong ..	A.C., 1 ph. ..	396	70	3	1.6.28
Goorambat	N/E.	Benalla ..	A.C., 3 ph. ..	73	32	3	19.2.40
Gordon	Ball.	Ballarat ..	A.C., 1 ph. ..	300	29	3	29.5.40
Gormandale	Gipps.	Traralgon ..	A.C., 3 ph. and 1 ph.	200	75	3	14.10.38
Gnotuk	S/W.	Camperdown ..	A.C., 1 ph. ..	120	17	3	1.3.36
Grahamvale	N/E.	Shepparton ..	A.C., 3 ph. and 1 ph.	(See Shepparton East)		3	20.7.37
Grassy Spur	Gipps.	Foster ..	A.C., 1 ph. ..	40	11	3	26.10.39
Greensborough	E/M.	Greensborough	A.C., 3 ph. ..	844	242	3	23.3.26
Greenvale	Metro.	Melbourne ..	A.C., 3 ph. ..	100	18	3	15.7.38
Hallam	E/M.	Dandenong ..	A.C., 1 ph. ..	118	60	3	27.8.37
Hallora	Gipps.	Warragul ..	A.C., 1 ph. ..	50	13	3	12.12.44
Hampton Park	E/M.	Dandenong ..	A.C., 1 ph. ..	200	42	3	29.6.42
Harcourt	Mid.	Castlemaine ..	A.C., 3 ph. and 1 ph.	389	81	3	9.4.33
Harkaway	E/M.	Dandenong ..	A.C., 1 ph. ..	67	20	3	31.7.40
†Harrietteville	N/E.	Myrtleford ..	A.C., 3 ph. ..	150	47	3	29.6.40
Harrisfield	E/M.	Dandenong ..	A.C., 1 ph. ..	303	38	3	22.10.35
Hastings	E/M.	Frankston ..	A.C., 1 ph. ..	564	128	3	28.3.27
Haunted Hills	Gipps.	Traralgon ..	A.C., 1 ph. ..	350	87	3	18.9.36
Hawkesdale	S/W.	Port Fairy ..	A.C., 1 ph.* ..	220	12	3	26.4.40
Hazelwood	Gipps.	Traralgon ..	A.C., 1 ph. ..	200	64	3	9.9.36
Hazelwood North	Gipps.	Traralgon ..	A.C., 1 ph. ..	150	50	3	21.12.37
Healesville	E/M.	Healesville ..	A.C., 3 ph. and 1 ph.	1,426	621	3	1.4.33
Heathmont	E/M.	Ringwood ..	A.C., 1 ph. ..	98	32	4	25.3.37
Hepburn Springs	Ball.	Daylesford ..	A.C., 3 ph. ..	500	238	3	1.10.40
Hexham	S/W.	Terang ..	A.C., 1 ph.* ..	120	16	3	8.7.38

CENTRES SERVED BY STATE ELECTRICITY COMMISSION OF VICTORIA—continued.

Municipality or Centre.	Branch.	Location of Officer-in-Charge.	System of Supply.	Population.	Number of Consumers.	Tariffs as per Appendix No. 7 Column No.	Date Supply First Undertaken by Commission.
Country—continued.							
Heyfield	Gipps.	Maffra ..	A.C., 3 ph. and 1 ph.	820	186	3	15.9.24
Hillside	Gipps.	Bairnsdale ..	A.C., 1 ph. ..	50	17	3	29.5.36
Huntly	Bend.	Bendigo ..	A.C., 1 ph. ..	200	14	3	21.11.44
Illowa	S/W.	Port Fairy ..	A.C., 1 ph.* ..	100	11	3	30.9.37
Inverloch	Gipps.	Korumburra ..	A.C., 1 ph. ..	450	131	3	1.10.34
Iona	Gipps.	Koo-wee-rup ..	A.C., 1 ph. ..	413	26	3	10.7.42
Irrewarra	S/W.	Colac ..	A.C., 1 ph.* ..	150	21	3	23.2.26
Jancourt	S/W.	Camperdown ..	A.C., 1 ph. ..	50	4	3	25.5.39
Jindivick	Gipps.	Warragul ..	A.C., 1 ph. ..	185	76	3	23.8.38
Johnsonville	Gipps.	Lakes Entrance ..	A.C., 1 ph. ..	120	32	3	24.1.36
Jordanville	E/M.	Dandenong ..	A.C., 1 ph. ..	69	20	3	7.10.38
Joyce's Creek	Mid.	Castlemaine ..	A.C., 3 ph. and 1 ph.	78	4	3	16.12.39
Jumbunna	Gipps.	Korumburra ..	A.C., 1 ph. ..	340	41	3	24.10.30
Kalimna Point	Gipps.	Lakes Entrance ..	A.C., 1 ph. ..	140	14	3	6.12.28
Kalkallo	E/M.	Greensborough ..	A.C., 1 ph. ..	33	8	3	11.3.41
Kallista	E/M.	Belgrave ..	A.C., 1 ph. ..	269	147	3	19.8.27
Kalorama	E/M.	Belgrave ..	A.C., 1 ph. ..	222	89	3	31.5.34
Kangaroo Ground	E/M.	Greensborough ..	A.C., 1 ph. ..	40	4	3	27.2.45
Kardella	Gipps.	Korumburra ..	A.C., 1 ph. ..	100	9	3	23.9.36
Kariah	S/W.	Camperdown ..	A.C., 1 ph.* ..	25	5	3	12.11.38
Katamatite	N/E.	Cobram ..	A.C., 1 ph. ..	238	40	3	14.7.39
Katunga	N/E.	Numurkah ..	A.C., 3 ph. ..	20	10	3	10.12.41
Keilor	Mid.	Bacchus Marsh ..	A.C., 3 ph. and 1 ph.	340	66	3	21.11.35
Kergunyah	N/E.	Wodonga ..	A.C., 1 ph. ..	70	15	3	15.6.45
Keysborough	E/M.	Dandenong ..	A.C., 1 ph. ..	155	39	3	21.8.41
Kiewa	N/E.	Wodonga ..	A.C., 1 ph. ..	155	64	3	12.4.39
Killarney	S/W.	Port Fairy ..	A.C., 1 ph.* ..	80	9	3	14.5.35
Kilmany South	Gipps.	Sale ..	A.C., 1 ph. ..	125	8	3	1.7.39
Kilsyth	E/M.	Ringwood ..	A.C., 1 ph. ..	160	53	4	1.4.25
Kingston	Ball.	Ballarat ..	A.C., 1 ph. ..	270	33	3	16.9.39
Kirkstall	S/W.	Port Fairy ..	A.C., 1 ph.* ..	80	4	3	9.4.40
Kolara	S/W.	Terang ..	A.C., 1 ph.* ..	70	13	3	21.3.25
Kongwak	Gipps.	Korumburra ..	A.C., 3 ph. and 1 ph.	300	84	3	10.10.30
Koonwarra	Gipps.	Leongatha ..	A.C., 1 ph. ..	100	19	3	24.9.40
Koo-wee-rup	Gipps.	Koo-wee-rup ..	A.C., 3 ph. and 1 ph.	900	202	3	1.8.35
Koo-wee-rup North	Gipps.	Koo-wee-rup ..	A.C., 3 ph. and 1 ph.	182	19	3	28.11.41
Koroit	S/W.	Port Fairy ..	A.C., 3 ph. ..	1,700	226	3	1.12.28
Korongah	S/W.	Port Fairy ..	A.C., 1 ph.* ..	30	4	3	4.5.38
Korrine	Gipps.	Korumburra ..	A.C., 1 ph. ..	40	11	3	19.12.40
Korumburra	Gipps.	Korumburra ..	A.C., 3 ph. and 1 ph.	3,000	634	2	1.12.24
Korumburra Rural	Gipps.	Korumburra ..	A.C., 1 ph. ..	100	26	3	1.11.35
Kyabram	N/E.	Kyabram ..	A.C., 3 ph. ..	2,170	547	2	1.12.26
Kyabram Rural	N/E.	Kyabram ..	A.C., 1 ph. ..	450	95	3	6.10.28
Kyneton	Mid.	Kyneton ..	A.C., 3 ph. ..	3,773	901	2	1.10.29
Ky Valley	N/E.	Kyabram ..	A.C., 1 ph. ..	250	35	3	27.7.40
Lake Bolac	S/W.	Terang ..	A.C., 1 ph. ..	190	44	3	5.8.38
Lake Gilliear	S/W.	Warrnambool ..	A.C., 1 ph.* ..	50	3	3	8.7.38
Lakes Entrance	Gipps.	Lakes Entrance ..	A.C., 3 ph. and 1 ph.	1,000	210	3	19.12.28
Lancaster	N/E.	Kyabram ..	A.C., 1 ph. ..	118	15	3	1.6.35
Lancefield	Mid.	Bacchus Marsh ..	A.C., 3 ph. and 1 ph.	721	119	3	27.3.29
Lang Lang	Gipps.	Koo-wee-rup ..	A.C., 3 ph. and 1 ph.	800	146	3	2.9.35
Lara	Geel.	Geelong ..	A.C., 3 ph. and 1 ph.	300	66	4	1.9.30
Lara Lake	Geel.	Geelong ..	A.C., 3 ph. and 1 ph.	(See Lara)	4	4	1.9.30
Lardner	Gipps.	Warragul ..	A.C., 1 ph. ..	105	26	3	7.2.39
Larpet	S/W.	Colac ..	A.C., 1 ph.* ..	10	1	3	20.12.44
Laverton	Metro.	Werribee ..	A.C., 1 ph. ..	500	82	3	22.11.38
Learmonth	Ball.	Ballarat ..	A.C., 3 ph. ..	350	63	3	19.3.38
Leigh Creek	Ball.	Ballarat ..	A.C., 1 ph. ..	36	14	3	27.8.40
Lemnos	N/E.	Shepparton ..	A.C., 1 ph. ..	412	32	3	1.12.38
Leongatha	Gipps.	Leongatha ..	A.C., 3 ph. ..	2,000	624	2	15.2.24
Leongatha Rural	Gipps.	Leongatha ..	A.C., 1 ph. ..	60	50	3	1.8.28
Leongatha South	Gipps.	Leongatha ..	A.C., 1 ph. ..	150	42	3	24.9.40
Leopold	Geel.	Queenscliff ..	A.C., 1 ph. ..	(See Drysdale)	3	3	13.2.24
Lillico	Gipps.	Warragul ..	A.C., 1 ph. ..	100	11	3	20.4.45
Lilydale	E/M.	Ringwood ..	A.C., 3 ph. and 1 ph.	1,372	464	3	1.4.25
Lindenow	Gipps.	Bairnsdale ..	A.C., 3 ph. and 1 ph.	250	64	3	6.4.35
Lindenow South	Gipps.	Bairnsdale ..	A.C., 1 ph. ..	150	26	3	6.4.35
Linton	Ball.	Ballarat ..	A.C., 3 ph. ..	450	71	3	7.9.39
Lismore	S/W.	Camperdown ..	A.C., 1 ph. ..	400	89	3	26.4.38
Lismore Rural	S/W.	Camperdown ..	A.C., 1 ph. ..	750	140	3	26.4.38
Loch	Gipps.	Korumburra ..	A.C., 1 ph. ..	500	138	3	18.8.30
Lockwood	E/M.	Belgrave ..	A.C., 1 ph. ..	172	86	3	23.12.36
Longford	Gipps.	Sale ..	A.C., 3 ph. ..	50	3	3	8.3.35
Longwarry	Gipps.	Koo-wee-rup ..	A.C., 3 ph. and 1 ph.	390	110	3	11.10.28
Lorne	S/W.	Lorne ..	A.C., 3 ph. and 1 ph.	990	363	3	15.12.36
Lorne Rural	S/W.	Lorne ..	A.C., 3 ph. and 1 ph.*	230	11	3	24.12.36
Lovely Banks	Geel.	Geelong ..	A.C., 3 ph. and 1 ph.	100	8	3	17.5.41

CENTRES SERVED BY STATE ELECTRICITY COMMISSION OF VICTORIA.—continued.

Municipality or Centre.	Branch.	Location of Officer-in-Charge.	System of Supply.	Population.	Number of Consumers.	Tariffs as per Appendix No. 7 Column No.	Date Supply First Undertaken by Commission.
Country—continued.							
Lower Ferntree Gully ..	E/M.	Belgrave ..	A.C., 3 ph. and 1 ph.	895	325	3	24.8.25
Lower Plenty ..	E/M.	Greensborough ..	A.C., 1 ph. ..	161	81	3	13.3.28
Lucknow ..	Gipps.	Bairnsdale ..	A.C., 3 ph. ..	150	55	2	1.8.27
Lyndhurst ..	E/M.	Dandenong ..	A.C., 3 ph. ..	150	10	3	19.1.38
Lysterfield ..	E/M.	Belgrave ..	A.C., 3 ph. and 1 ph.	120	21	3	17.7.37
Macarthur ..	S/W.	Port Fairy ..	A.C., 1 ph. ..	350	65	3	3.4.40
Macarthur Rural ..	S/W.	Port Fairy ..	A.C., 1 ph. ..	600	120	3	3.4.40
Macedon ..	Mid.	Kyneton ..	A.C., 3 ph. and 1 ph.	1,444	289	3	14.6.29
Maffra ..	Gipps.	Maffra ..	A.C., 3 ph. ..	2,800	639	2	1.9.24
Maffra Rural ..	Gipps.	Maffra ..	A.C., 1 ph. ..	310	44	3	14.8.28
Majorca ..	Mid.	Maryborough ..	A.C., 3 ph. ..	50	2	3	11.4.45
Maldon ..	Mid.	Castlemaine ..	A.C., 3 ph. and 1 ph.	1,169	197	3	1.7.36
Malmsbury ..	Mid.	Kyneton ..	A.C., 3 ph. and 1 ph.	820	45	3	22.12.37
Mandurang ..	Bend.	Bendigo ..	A.C., 1 ph. ..	100	6	3	23.5.45
Mansfield ..	N/E.	Alexandra ..	A.C., 1 ph. ..	836	283	3	1.6.28
Mardan ..	Gipps.	Leongatha ..	A.C., 1 ph. ..	150	32	3	31.7.36
Marshall ..	Geel.	Geelong ..	A.C., 1 ph. ..	70	20	3	6.10.39
Maryborough ..	Mid.	Maryborough ..	A.C., 3 ph. ..	6,500	1,540	2	1.10.37
Maryvale ..	Gipps.	Traralgon ..	A.C., 3 ph. and 1 ph.	100	22	3	6.8.37
Meenyan ..	Gipps.	Leongatha ..	A.C., 1 ph. ..	300	111	3	14.9.36
Melton ..	Mid.	Bacchus Marsh ..	A.C., 3 ph. and 1 ph.	413	100	3	20.12.39
Melton South ..	Mid.	Bacchus Marsh ..	A.C., 1 ph. ..	(See Melton)		3	31.1.40
Mernda ..	E/M.	Greensborough ..	A.C., 1 ph. ..	220	29	3	28.9.37
Merricks North ..	E/M.	Mornington ..	A.C., 1 ph. ..	30	19	3	24.5.40
Merrigum ..	N/E.	Kyabram ..	A.C., 3 ph. ..	329	137	3	22.2.27
Metropolitan Farm (Werribee) ..	Metro.	Werribee ..	A.C., 3 ph. and 1 ph.	325	45	3	15.12.33
Metung ..	Gipps.	Lakes Entrance ..	A.C., 1 ph. ..	200	45	3	23.12.35
Mickleham ..	Metro.	Melbourne ..	A.C., 3 ph. and 1 ph.	84	20	3	12.6.39
Milawa ..	N/E.	Wangaratta ..	A.C., 3 ph. and 1 ph.	100	30	3	27.7.39
Miner's Rest ..	Ball.	Ballarat ..	A.C., 3 ph. ..	50	12	3	14.2.38
Mirboo ..	Gipps.	Leongatha ..	A.C., 1 ph. ..	70	40	3	7.8.39
Mirboo East ..	Gipps.	Leongatha ..	A.C., 1 ph. ..	70	11	3	1.8.40
Mirboo North ..	Gipps.	Leongatha ..	A.C., 3 ph. and 1 ph.	700	183	3	1.10.24
Moe ..	Gipps.	Trafalgar ..	A.C., 3 ph. ..	1,250	370	3	23.9.23
Moe East ..	Gipps.	Trafalgar ..	A.C., 1 ph. ..	275	50	3	24.6.38
Moe Rural ..	Gipps.	Trafalgar ..	A.C., 1 ph. ..	276	39	3	14.7.30
Monbulk ..	E/M.	Belgrave ..	A.C., 1 ph. ..	302	105	3	30.11.36
Monegeetta ..	Mid.	Bacchus Marsh ..	A.C., 3 ph. and 1 ph.	77	17	3	3.5.29
Monomeith ..	Gipps.	Koo-wee-rup ..	A.C., 1 ph. ..	75	24	3	17.1.36
Montmorency ..	E/M.	Greensborough ..	A.C., 1 ph. ..	457	143	3	11.5.26
Montrose ..	E/M.	Ringwood ..	A.C., 3 ph. and 1 ph.	338	123	4	1.4.25
Moolap ..	Geel.	Queenscliff ..	A.C., 1 ph. ..	(See Drysdale)		3	30.1.25
Moolort ..	Mid.	Maryborough ..	A.C., 1 ph. ..	83	5	3	14.2.38
Moorooduc ..	E/M.	Frankston ..	A.C., 3 ph. and 1 ph.	40	21	3	2.3.25
Mooroolbark ..	E/M.	Ringwood ..	A.C., 1 ph. ..	55	15	3	16.9.36
Mooroopna ..	N/E.	Shepparton ..	A.C., 3 ph. ..	1,733	289	3	1.10.26
Morang South ..	E/M.	Greensborough ..	A.C., 1 ph. ..	238	42	3	28.9.37
Mordialloc (portion only) ..	E/M.	Chelsea ..	A.C., 3 ph. ..	242	95	2	31.12.45
Mornington ..	E/M.	Mornington ..	A.C., 3 ph. and 1 ph.	2,560	852	2	1.8.30
Mortlake ..	S/W.	Terang ..	A.C., 3 ph. ..	950	269	3	16.5.24
Morwell ..	Gipps.	Traralgon ..	A.C., 3 ph. and 1 ph.	2,700	677	2	1.4.26
Morwell Bridge ..	Gipps.	Traralgon ..	A.C., 1 ph. ..	250	65	3	26.11.28
Mossiface ..	Gipps.	Lakes Entrance ..	A.C., 1 ph. ..	100	13	3	1.10.30
Mountain View ..	Gipps.	Korumburra ..	A.C., 1 ph. ..	100	12	3	14.6.40
Moyarra ..	Gipps.	Korumburra ..	A.C., 1 ph. ..	100	25	3	26.6.30
Moyne View ..	S/W.	Port Fairy ..	A.C., 1 ph.* ..	30	5	3	27.5.37
Mt. Dandenong ..	E/M.	Belgrave ..	A.C., 1 ph. ..	130	124	3	20.6.33
Mt. Duneed ..	Geel.	Queenscliff ..	A.C., 1 ph. ..	40	7	3	5.10.39
Mt. Eliza ..	E/M.	Frankston ..	A.C., 3 ph. and 1 ph.	571	209	2	21.2.28
Mt. Evelyn ..	E/M.	Ringwood ..	A.C., 1 ph. ..	374	128	3	9.1.28
Mt. Martha ..	E/M.	Mornington ..	A.C., 3 ph. and 1 ph.	444	162	3	1.8.30
Mt. Waverley ..	E/M.	Dandenong ..	A.C., 1 ph. ..	159	44	3	1.6.28
Muckleford ..	Mid.	Castlemaine ..	A.C., 1 ph. ..	111	2	3	18.1.45
Myer's Flat ..	Bend.	Bendigo ..	A.C., 1 ph. ..	25	9	3	29.6.40
Myrtlebank ..	Gipps.	Sale ..	A.C., 1 ph. ..	50	45	3	3.3.38
Myrtleford ..	N/E.	Myrtleford ..	A.C., 3 ph. ..	850	318	3	1.12.40
Nalangil ..	S/W.	Colac ..	A.C., 1 ph.* ..	50	6	3	19.12.24
Nanneella ..	N/E.	Rochester ..	A.C., 1 ph. ..	513	123	3	17.10.38
Nar-Nar-Goon ..	Gipps.	Koo-wee-rup ..	A.C., 1 ph. ..	460	85	3	23.5.34
Narracan East ..	Gipps.	Trafalgar ..	A.C., 1 ph. ..	50	7	3	23.7.40
Narre Warren ..	E/M.	Dandenong ..	A.C., 1 ph. ..	141	50	3	13.11.28
Narre Warren North ..	E/M.	Dandenong ..	A.C., 1 ph. ..	112	20	3	10.11.38
Nathalia ..	N/E.	Numurkah ..	A.C., 3 ph. ..	1,050	232	3	1.10.31
Nayook ..	Gipps.	Warragul ..	A.C., 1 ph. ..	80	18	3	15.1.35
Neerim ..	Gipps.	Warragul ..	A.C., 1 ph. ..	180	38	3	15.1.35
Neerim East ..	Gipps.	Warragul ..	A.C., 1 ph. ..	90	52	3	21.12.36
Neerim Junction ..	Gipps.	Warragul ..	A.C., 1 ph. ..	150	41	3	3.5.35
Neerim North ..	Gipps.	Warragul ..	A.C., 1 ph. ..	50	22	3	11.4.38
Neerim South ..	Gipps.	Warragul ..	A.C., 1 ph. ..	480	200	3	15.1.35
New Gisborne ..	Mid.	Bacchus Marsh ..	A.C., 1 ph. ..	250	32	3	1.3.29

CENTRES SERVED BY STATE ELECTRICITY COMMISSION OF VICTORIA—continued.

Municipality or Centre.	Branch.	Location of Officer-in-Charge.	System of Supply.	Population.	Number of Consumers.	Tariffs as per Appendix No. 7 Column No.	Date Supply First Undertaken by Commission.
Country—continued.							
Newlyn	Ball.	Ballarat ..	A.C., 3 ph. and 1 ph.	100	16	3	14.7.44
Newry	Gipps.	Maffra ..	A.C., 3 ph. and 1 ph.	380	81	3	25.10.26
Newstead	Mid.	Castlemaine ..	A.C., 3 ph.	389	91	3	20.4.37
Nicholson	Gipps.	Lakes Entrance ..	A.C., 1 ph.	70	3	3	12.12.34
Nilma	Gipps.	Warragul ..	A.C., 1 ph.	180	87	3	23.12.27
Nilma Rural	Gipps.	Warragul ..	A.C., 1 ph.	100	26	3	20.4.45
Noble Park	E/M.	Dandenong ..	A.C., 3 ph. and 1 ph.	1,572	313	2	5.12.24
Noojee	Gipps.	Warragul ..	A.C., 1 ph.	135	49	3	15.1.35
Noorat	S/W.	Terang ..	A.C., 3 ph. and 1 ph.	320	101	3	5.12.24
North Wonthaggi (portion only)	Gipps.	Korumburra ..	A.C., 1 ph.	30	5	3	17.2.41
Notting Hill	E/M.	Dandenong ..	A.C., 1 ph.	200	45	3	21.7.27
Numurkah	N/E.	Numurkah ..	A.C., 3 ph.	1,611	411	3	1.10.31
Nyora	Gipps.	Korumburra ..	A.C., 1 ph.	300	53	3	1.10.35
Oaklands Junction	Metro.	Melbourne ..	A.C., 1 ph.	90	7	3	10.12.35
Ocean Grove	Geel.	Queenscliff ..	A.C., 1 ph.	350	144	3	27.9.24
Officer	E/M.	Dandenong ..	A.C., 1 ph.	207	77	3	12.4.28
Olinda	E/M.	Belgrave ..	A.C., 1 ph.	479	214	3	30.9.27
Orrvale	N/E.	Shepparton ..	A.C., 3 ph. and 1 ph.	(See Shepparton East)		3	20.2.36
Outtrim	Gipps.	Korumburra ..	A.C., 1 ph.	250	23	3	13.11.39
Ovens	N/E.	Myrtleford ..	A.C., 3 ph. and 1 ph.	70	17	3	20.11.44
Pakenham	E/M.	Dandenong ..	A.C., 1 ph.	624	193	3	18.6.28
Panmure	S/W.	Terang ..	A.C., 1 ph.*	200	26	3	3.9.37
Paynesville	Gipps.	Bairnsdale ..	A.C., 3 ph. and 1 ph.	350	84	3	25.2.38
Penshurst	S/W.	Terang ..	A.C., 1 ph.	720	142	3	16.9.38
Penshurst Rural	S/W.	Terang ..	A.C., 1 ph.	1,600	287	3	16.9.38
Picola	N/E.	Numurkah ..	A.C., 3 ph.	180	20	3	1.11.40
Pirron Yallock	S/W.	Colac ..	A.C., 1 ph.*	50	9	3	21.12.36
Point Cook (portion only)	Metro.	Werribee ..	A.C., 3 ph. and 1 ph.	40	7	3	1.7.40
Point Lonsdale	Geel.	Queenscliff ..	A.C., 3 ph. and 1 ph.	250	179	3	30.12.23
Pomborneit North	S/W.	Camperdown ..	A.C., 1 ph.	100	31	3	1.9.26
Pomborneit South	S/W.	Camperdown ..	A.C., 1 ph.*	90	12	3	1.9.26
Poowong	Gipps.	Korumburra ..	A.C., 3 ph. and 1 ph.	450	123	3	11.9.30
Poowong East	Gipps.	Korumburra ..	A.C., 1 ph.	180	42	3	17.10.38
Poowong North	Gipps.	Korumburra ..	A.C., 1 ph.	100	4	3	2.5.45
Portarlington	Geel.	Queenscliff ..	A.C., 1 ph.	800	159	3	27.2.24
Port Fairy	S/W.	Port Fairy ..	A.C., 3 ph.	1,850	469	3	21.12.28
Port Fairy North	S/W.	Port Fairy ..	A.C., 3 ph. and 1 ph.	(See Port Fairy)		3	1.7.36
Port Fairy Rural	S/W.	Port Fairy ..	A.C., 3 ph. and 1 ph.*	800	177	3	10.11.30
Port Franklin	Gipps.	Foster ..	A.C., 1 ph.	150	33	3	23.7.38
Portsea	E/M.	Sorrento ..	A.C., 3 ph.	494	161	2	1.10.27
Powlett River (portion only)	Gipps.	Korumburra ..	A.C., 1 ph.	60	9	3	17.1.41
Queenscliff	Geel.	Queenscliff ..	A.C., 3 ph.	2,950	580	3	30.12.23
Ranceby	Gipps.	Korumburra ..	A.C., 1 ph.	60	4	3	23.6.41
Raywood	Bend.	Bendigo ..	A.C., 3 ph.	190	36	3	3.7.40
Red Hill	E/M.	Mornington ..	A.C., 3 ph. and 1 ph.	440	93	3	30.6.37
Research	E/M.	Greensborough ..	A.C., 1 ph.	120	29	3	24.5.40
Rickett's Marsh	S/W.	Colac ..	A.C., 1 ph.*	30	6	3	28.8.44
Riddell	Mid.	Bacchus Marsh ..	A.C., 3 ph. and 1 ph.	451	77	3	7.3.29
Ringwood	E/M.	Ringwood ..	A.C., 3 ph. and 1 ph.	3,840	1,050	4	1.4.25
Rochester	N/E.	Rochester ..	A.C., 3 ph.	1,826	411	3	1.8.35
Rockbank	Mid.	Bacchus Marsh ..	A.C., 3 ph. and 1 ph.	140	25	3	3.4.39
Rokeby	Gipps.	Warragul ..	A.C., 3 ph. and 1 ph.	50	8	3	4.4.35
Romsey	Mid.	Bacchus Marsh ..	A.C., 3 ph. and 1 ph.	758	136	3	19.3.29
Rosebrook	S/W.	Port Fairy ..	A.C., 1 ph.*	150	9	3	30.9.36
Rosebud	E/M.	Sorrento ..	A.C., 3 ph. and 1 ph.	1,757	612	3	8.12.27
Rosedale	Gipps.	Traralgon ..	A.C., 1 ph.	500	89	3	15.8.27
Rubicon	N/E.	Alexandra ..	A.C., 1 ph.	62	3	3	4.9.27
Ruby	Gipps.	Leongatha ..	A.C., 1 ph.	70	33	3	19.4.28
Rutherglen	N/E.	Rutherglen ..	A.C., 3 ph.	1,402	364	3	15.10.26
Ryanston	Gipps.	Korumburra ..	A.C., 1 ph.	150	13	3	14.1.41
Rye	E/M.	Sorrento ..	A.C., 1 ph.	342	116	3	16.12.27
Sale	Gipps.	Sale ..	A.C., 3 ph.	6,000	1,219	2	1.7.24
Sale Rural	Gipps.	Sale ..	A.C., 1 ph.	320	120	3	12.12.28
Sassafras	E/M.	Belgrave ..	A.C., 3 ph. and 1 ph.	615	223	3	9.7.27
Scarsdale	Ball.	Ballarat ..	A.C., 1 ph.	230	9	3	5.9.39
Scoresby	E/M.	Dandenong ..	A.C., 1 ph.	139	37	3	23.9.37
Scotsburn	Ball.	Ballarat ..	A.C., 1 ph.	50	9	3	3.11.44
Seaford	E/M.	Frankston ..	A.C., 3 ph. and 1 ph.	1,088	325	2	21.2.28
Selby	E/M.	Belgrave ..	A.C., 1 ph.	95	46	3	12.12.35
Seymour	N/E.	Seymour ..	A.C., 3 ph. and 1 ph.	3,000	777	2	2.10.44
Shepparton	N/E.	Shepparton ..	A.C., 3 ph.	7,590	1,986	2	1.1.25
Shepparton East	N/E.	Shepparton ..	A.C., 3 ph. and 1 ph.	1,263	241	3	25.2.36
Shepparton Rural	N/E.	Shepparton ..	A.C., 1 ph.	90	14	3	17.8.39
Sherbrooke	E/M.	Belgrave ..	A.C., 1 ph.	175	45	3	29.7.27
Shoreham	E/M.	Mornington ..	A.C., 1 ph.	30	8	3	24.5.40

CENTRES SERVED BY STATE ELECTRICITY COMMISSION OF VICTORIA—continued.

Municipality or Centre.	Branch.	Location of Officer-in-Charge.	System of Supply.	Population.	Number of Consumers.	Tariffs as per Appendix No. 7 Column No.	Date Supply First Undertaken by Commission.
Country—continued.							
Silvan	E/M.	Ringwood ..	A.C., 3 ph. and 1 ph.	241	53	3	13.6.28
Skipton	Ball.	Ballarat ..	A.C., 3 ph. and 1 ph.	590	97	3	27.10.39
Smeaton	Ball.	Ballarat ..	A.C., 1 ph.	170	35	3	16.4.38
Smythesdale	Ball.	Ballarat ..	A.C., 1 ph.	280	19	3	2.9.39
Somers	E/M.	Mornington ..	A.C., 1 ph.	209	68	3	24.12.35
Somerton	Metro.	Melbourne ..	A.C., 3 ph.	90	1	3	22.7.38
Somerville	E/M.	Frankston ..	A.C., 3 ph. and 1 ph.	390	88	3	19.12.26
Sorrento	E/M.	Sorrento ..	A.C., 3 ph. and 1 ph.	1,442	471	2	1.10.27
South Belgrave	E/M.	Belgrave ..	A.C., 1 ph.	173	18	3	17.2.37
South Gisborne	Mid.	Bacchus Marsh	A.C., 3 ph. and 1 ph.	(See Gisborne)		3	1.5.37
South Purumbete	S/W.	Camperdown ..	A.C., 1 ph.	200	5	3	25.5.39
Southern Cross	S/W.	Port Fairy ..	A.C., 1 ph.*	20	6	3	31.8.38
Springbank	Ball.	Ballarat ..	A.C., 1 ph.	20	3	3	7.2.45
Springhurst	N/E.	Rutherglen ..	A.C., 3 ph.	229	52	3	6.9.26
Springvale	E/M.	Dandenong ..	A.C., 3 ph. and 1 ph.	2,350	694	2	5.12.24
St. Albans	Mid.	Bacchus Marsh	A.C., 3 ph. and 1 ph.	900	136	3	14.2.30
St. James	N/E.	Yarrawonga ..	A.C., 3 ph.	260	44	3	14.2.40
Stanhope	N/E.	Kyabram ..	A.C., 3 ph. and 1 ph.	402	217	3	14.6.38
Stavely	S/W.	Terang ..	A.C., 1 ph.*	20	2	3	8.11.40
Stoneyford	S/W.	Camperdown ..	A.C., 1 ph.*	100	10	3	20.12.37
Stony Creek	Gipps.	Leongatha ..	A.C., 1 ph.	70	28	3	14.9.36
Stratford	Gipps.	Maffra ..	A.C., 3 ph. and 1 ph.	1,000	182	3	20.12.36
Strathallan	N/E.	Echuca ..	A.C., 1 ph.	30	20	3	5.11.35
Strathfieldsaye	Bend.	Bendigo ..	A.C., 1 ph.	250	28	3	13.3.45
Strathmerton	N/E.	Cobram ..	A.C., 1 ph.	170	22	3	19.2.35
Streatham	S/W.	Terang ..	A.C., 1 ph.*	150	25	3	28.9.39
Sunbury	Mid.	Bacchus Marsh	A.C., 3 ph. and 1 ph.	1,303	253	3	1.5.26
Swan Marsh	S/W.	Colac ..	A.C., 1 ph.*	100	19	3	4.6.37
Swan Reach	Gipps.	Lakes Entrance	A.C., 1 ph.	150	36	3	11.7.30
Sydenham	Mid.	Bacchus Marsh	A.C., 3 ph. and 1 ph.	97	25	3	14.10.38
Talbot	Mid.	Maryborough	A.C., 1 ph.	442	88	3	27.8.38
Tallangatta	N/E.	Wodonga ..	A.C., 3 ph.	850	233	3	1.11.40
Tallygaroopna	N/E.	Shepparton ..	A.C., 3 ph.	228	42	3	22.10.33
Tally Ho	E/M.	Dandenong ..	A.C., 3 ph.	167	54	3	9.3.28
Tambo Upper	Gipps.	Lakes Entrance	A.C., 1 ph.	100	15	3	24.12.37
Tandara	Bend.	Bendigo ..	A.C., 1 ph.	100	9	3	9.11.44
Tandarook	S/W.	Camperdown ..	A.C., 1 ph.	50	4	3	25.5.39
Tangambalanga	N/E.	Wodonga ..	A.C., 3 ph.	170	38	3	12.4.39
Tanjil South	Gipps.	Trafalgar ..	A.C., 1 ph.	96	32	3	27.5.37
Tarago	Gipps.	Warragul ..	A.C., 1 ph.	50	14	3	23.8.38
Tatura	N/E.	Shepparton ..	A.C., 3 ph.	1,506	363	3	1.11.26
Tecoma	E/M.	Belgrave ..	A.C., 3 ph.	(See Belgrave)		2	3.9.28
Teetora Road	Gipps.	Warragul ..	A.C., 1 ph.	105	39	3	27.5.41
Terang	S/W.	Terang ..	A.C., 3 ph. and 1 ph.	2,350	613	2	4.3.24
Terang Rural	S/W.	Terang ..	A.C., 3 ph. and 1 ph.	1,100	338	3	9.1.36
Teabury	S/W.	Camperdown ..	A.C., 1 ph.*	200	4	3	15.5.39
The Basin	E/M.	Ringwood ..	A.C., 1 ph.	354	43	3	13.9.39
Thomastown	E/M.	Greensborough	A.C., 3 ph.	150	43	3	1.6.28
Thornton	N/E.	Alexandra ..	A.C., 1 ph.	170	61	3	19.7.27
Thorpdale	Gipps.	Trafalgar ..	A.C., 1 ph.	168	57	3	23.12.37
Tinamba	Gipps.	Maffra ..	A.C., 1 ph.	350	142	3	11.7.28
Tongala	N/E.	Echuca ..	A.C., 3 ph. and 1 ph.	478	265	3	12.9.26
Toolamba West	N/E.	Shepparton ..	A.C., 1 ph.	(See Ardmona)		3	1.12.39
Toongabbie	Gipps.	Traralgon ..	A.C., 1 ph.	200	29	3	11.3.29
Toora	Gipps.	Foster ..	A.C., 3 ph. and 1 ph.	450	165	3	10.5.38
Tooradin	Gipps.	Koo-wee-rup ..	A.C., 1 ph.	250	58	3	14.1.37
Toorloo Arm	Gipps.	Lakes Entrance	A.C., 1 ph.	55	6	3	13.2.40
Torquay	Geel.	Queenscliff ..	A.C., 3 ph. and 1 ph.	350	203	3	1.9.30
Torwood	Gipps.	Warragul ..	A.C., 1 ph.	50	18	3	22.1.40
Tourello	Ball.	Ballarat ..	A.C., 1 ph.	14	6	3	10.8.38
Tower Hill	S/W.	Port Fairy ..	A.C., 1 ph.*	40	6	3	30.6.35
Trafalgar	Gipps.	Trafalgar ..	A.C., 3 ph.	1,140	350	3	16.10.23
Trafalgar Rural	Gipps.	Trafalgar ..	A.C., 1 ph.	356	141	3	3.4.28
Traralgon	Gipps.	Traralgon ..	A.C., 3 ph. and 1 ph.	4,050	1,000	2	24.11.23
Traralgon Rural	Gipps.	Traralgon ..	A.C., 1 ph.	200	26	3	27.11.28
Traralgon South	Gipps.	Traralgon ..	A.C., 1 ph.	150	28	3	12.8.37
Tremont	E/M.	Belgrave ..	A.C., 1 ph.	430	110	3	2.9.27
Trentham	Mid.	Kyneton ..	A.C., 3 ph.	887	181	3	8.5.39
Triholm	Gipps.	Korumburra ..	A.C., 1 ph.	40	3	3	17.10.38
Tullamarine (portion only)	Metro.	Melbourne ..	A.C., 3 ph. and 1 ph.	50	12	3	18.3.39
Tungamah	N/E.	Yarrawonga ..	A.C., 3 ph.	308	73	3	14.2.40
Tyabb	E/M.	Frankston ..	A.C., 1 ph.	260	46	3	20.1.28
Tyers	Gipps.	Traralgon ..	A.C., 3 ph. and 1 ph.	260	63	3	15.10.23
Tylden	Mid.	Kyneton ..	A.C., 1 ph.	274	28	3	6.7.39
Tynong	Gipps.	Koo-wee-rup ..	A.C., 1 ph.	280	75	3	14.1.29
Upper Beaconsfield ..	E/M.	Dandenong ..	A.C., 1 ph.	325	66	3	1.8.34
Upper Ferntree Gully ..	E/M.	Belgrave ..	A.C., 3 ph. and 1 ph.	1,131	295	3	24.8.25
Upper Maffra West ..	Gipps.	Maffra ..	A.C., 1 ph.	250	44	3	6.10.37
Upwey	E/M.	Belgrave ..	A.C., 3 ph. and 1 ph.	1,675	513	2	24.8.25
Valencia Creek	Gipps.	Maffra ..	A.C., 1 ph.	100	16	3	11.6.38
Vervale	Gipps.	Koo-wee-rup ..	A.C., 1 ph.	115	7	3	10.7.42
Violet Town	N/E.	Benalla ..	A.C., 3 ph.	680	130	3	1.3.36

CENTRES SERVED BY STATE ELECTRICITY COMMISSION OF VICTORIA—continued.

Municipality or Centre.	Branch	Location of Officer-in-Charge.	System of Supply.	Population.	Number of Consumers.	Tariffs as per Appendix No. 7 Column No.	Date Supply First Undertaken by Commission.
Country—continued.							
Waaiia	N/E.	Numurkah ..	A.C., 3 ph. ..	50	16	3	5.11.40
Wahgunyah	N/E.	Rutherglen ..	A.C., 3 ph. ..	560	99	3	1.2.26
Wallace	Ball.	Ballarat ..	A.C., 3 ph. ..	130	21	3	17.5.40
Walpa	Gipps.	Bairnsdale ..	A.C., 1 ph. ..	50	13	3	16.5.35
Wangaratta	N/E.	Wangaratta ..	A.C., 3 ph. ..	5,721	1,454	2	12.3.27
Wangaratta North ..	N/E.	Wangaratta ..	A.C., 3 ph. ..	26	9	3	20.5.36
Wangaratta South ..	N/E.	Wangaratta ..	A.C., 3 ph. ..	57	20	3	3.5.38
Wangoom	S/W.	Warrnambool..	A.C., 1 ph.* ..	20	3	3	9.5.39
Wantirna	E/M.	Ringwood ..	A.C., 3 ph. ..	85	21	3	1.2.28
Warburton	E/M.	Healesville ..	A.C., 3 ph. ..	840	313	3	1.7.44
Warnecoort	S/W.	Colac ..	A.C., 1 ph. ..	30	7	3	19.12.25
Warragul	Gipps.	Warragul ..	A.C., 3 ph. and 1 ph.	3,100	896	2	1.12.30
Warragul Rural	Gipps.	Warragul ..	A.C., 1 ph. ..	250	103	3	19.6.28
Warrandyte	E/M.	Ringwood ..	A.C., 1 ph. ..	318	171	3	21.12.35
Warrior	S/W.	Colac ..	A.C., 1 ph. ..	80	17	3	18.8.24
Warrnambool	S/W.	Warrnambool ..	A.C., 3 ph. and 1 ph.	10,000	2,500	2	30.12.23
Warrnambool Rural ..	S/W.	Warrnambool..	A.C., 3 ph. and 1 ph.	900	234	3	9.1.36
Warrong	S/W.	Port Fairy ..	A.C., 1 ph.* ..	20	3	3	20.4.40
Watsonia	E/M.	Greensborough	A.C., 3 ph. ..	99	44	3	24.3.26
Waubra	Ball.	Ballarat ..	A.C., 1 ph. ..	120	24	3	18.12.40
Weerite	S/W.	Camperdown ..	A.C., 3 ph. ..	30	11	3	8.6.28
Wellsford	Bend.	Bendigo ..	A.C., 3 ph. and 1 ph.	20	4	3	25.1.43
Welshpool	Gipps.	Foster ..	A.C., 3 ph. and 1 ph.	330	91	3	13.8.38
Werribee	Metro.	Werribee ..	A.C., 3 ph. and 1 ph.	3,050	764	2	10.4.24
Werribee South	Metro.	Werribee ..	A.C., 3 ph. and 1 ph.	500	95	3	24.11.36
Westbury	Gipps.	Trafalgar ..	A.C., 1 ph. ..	40	13	3	27.5.37
Westmere	S/W.	Terang ..	A.C., 1 ph.* ..	50	15	3	30.9.38
Wheeler's Hill	E/M.	Dandenong ..	A.C., 1 ph. ..	141	40	3	1.2.26
Whittlesea	E/M.	Greensborough	A.C., 1 ph. ..	426	115	3	28.9.37
Whorouly	N/E.	Myrtleford ..	A.C., 3 ph. and 1 ph.	30	45	3	2.6.42
Willatook	S/W.	Port Fairy ..	A.C., 1 ph.* ..	20	3	3	23.5.40
Willaura	S/W.	Terang ..	A.C., 1 ph. ..	400	106	3	23.9.38
Willowgrove	Gipps.	Trafalgar ..	A.C., 1 ph. ..	60	32	3	22.5.39
Winchelsea	S/W.	Colac ..	A.C., 3 ph. ..	705	114	3	30.6.24
Wiseleigh	Gipps.	Lakes Entrance	A.C., 1 ph. ..	100	5	3	24.10.30
Wodonga	N/E.	Wodonga ..	A.C., 3 ph. ..	3,381	612	3	1.11.33
Wodonga Rural	N/E.	Wodonga ..	A.C., 1 ph. ..	40	10	3	8.8.38
Wonga Park	E/M.	Ringwood ..	A.C., 1 ph. ..	85	7	3	18.5.38
Woodend	Mid.	Kyneton ..	A.C., 3 ph. and 1 ph.	1,454	342	3	1.8.29
Woodglen	Gipps.	Bairnsdale ..	A.C., 3 ph. and 1 ph.	30	13	3	16.4.40
Wool Wool	S/W.	Colac ..	A.C., 3 ph. ..	30	84	3	15.10.24
Woorndoo	S/W.	Terang ..	A.C., 1 ph.* ..	40	9	3	8.12.38
Wunghnu	N/E.	Numurkah ..	A.C., 3 ph. ..	210	28	3	1.10.33
Wy Yung	Gipps.	Bairnsdale ..	A.C., 3 ph. and 1 ph.	50	9	3	28.9.28
Yackandandah	N/E.	Wodonga ..	A.C., 3 ph. ..	363	112	3	20.12.39
Yallock	Gipps.	Koo-wee-rup ..	A.C., 1 ph. ..	100	12	3	25.11.37
Yangery	S/W.	Port Fairy ..	A.C., 1 ph.* ..	120	7	3	22.6.38
Yannathan	Gipps.	Koo-wee-rup ..	A.C., 1 ph. ..	275	86	3	8.2.36
Yan Yean	E/M.	Greensborough	A.C., 1 ph. ..	128	26	3	28.9.37
Yarra Glen	E/M.	Healesville ..	A.C., 1 ph. ..	328	66	3	15.3.34
Yarragon	Gipps.	Trafalgar ..	A.C., 3 ph. and 1 ph.	630	211	3	1.11.23
Yarrowonga	N/E.	Yarrowonga ..	A.C., 3 ph. ..	2,874	663	3	1.8.25
Yea	N/E.	Alexandra ..	A.C., 3 p. and 1 ph.	950	267	3	1.5.45
Yering	E/M.	Healesville ..	A.C., 1 ph. ..	37	17	3	24.2.34
Yeringberg	E/M.	Healesville ..	A.C., 1 ph. ..	45	19	3	7.7.33
Yinuar	Gipps.	Traralgon ..	A.C., 3 ph. and 1 ph.	450	149	3	28.11.27

* = 230 V. only.

† = Non-permanent supply.

ABBREVIATIONS.

Abbreviations.	Branch Title.	Location of Branch Headquarters.	Telephone.
Metro.	Metropolitan	238-242 Flinders-street, Melbourne	C. 10310 JM 1525
Ball.	Ballarat	1-7 Wendouree-parade, Ballarat	1825
Bend.	Bendigo	Cr. Hargreaves and Williamson-streets, Bendigo	1700
E/M.	Eastern Metropolitan..	197 Lonsdale-street, Dandenong	182
Geel.	Geelong	Corio-terrace, Geelong	1941
Gipps.	Gippsland	108-116 Franklin-street, Traralgon	114
Mid.	Midland	40 Lyttleton-street, Castlemaine	238
N/E.	North-Eastern	80 Bridge-street, Benalla	192
S/W.	South-Western	119-121 Murray-street, Colac	660

System of Supply.—A.C. Single-phase—Metropolitan area, 200-400 volts,
Other areas, 230-460 volts.

A.C. Three-phase, 230-400 volts.

D.C. Three-wire, 230-460 volts.

ELECTRICITY SUPPLY UNDERTAKINGS (MUNICIPAL AND PRIVATE).

Municipality or Centre.	Supply Authority.	System of Supply.	Population.	Number of Consumers.	Tariffs.	
METROPOLITAN.						
Supplied in Bulk by State Electricity Commission.						
City of Melbourne (excl. Flemington)	Melbourne City Council ..	{ D.C., 230-460 v. A.C., 3 ph., 230-400 v. }	74,900	28,158	<p>Metropolitan Standard Tariffs apply in all these territories with the exception of that of the Melbourne City Council, which has the following Metropolitan Standard Tariffs only:—Residential, All-Purposes, Night Rate Water Heating.</p> <p>In addition to the above, the Melbourne City Council has Tariffs different from Standard for commercial and industrial lighting, radiators, and power and heating.</p>	
Box Hill, and City of Nunawading	Box Hill City Council ..	A.C., 3 ph., 230-400 v.	24,120	7,700		
Brunswick ..	Brunswick City Council ..	A.C., 3 ph., 230-400 v.	52,394	14,751		
Coburg ..	Coburg City Council ..	A.C., 3 ph., 230-400 v.	48,003	11,997		
Footscray and part of Braybrook Shire	Footscray City Council ..	A.C., 3 ph., 230-400 v.	64,800	14,539		
Heidelberg (excl. Greensborough)	Heidelberg City Council ..	A.C., 3 ph., 230-400 v.	31,452	8,020		
Northcote ..	Northcote City Council ..	A.C., 3 ph., 230-400 v.	43,000	11,870		
Port Melbourne	Port Melbourne City Council ..	A.C., 3 ph., 230-400 v.	12,828	3,563		
Preston ..	Preston City Council ..	A.C., 3 ph., 230-400 v.	38,990	10,454		
Williamstown ..	Williamstown City Council ..	A.C., 3 ph., 230-400 v.	26,441	7,269		
			412,928	118,321		
COUNTRY.						
					Lighting.	Power.
Apollo Bay ..	H. A. Block ..	D.C., 230 v. ..	500	156	1s. 3d. to 1s. ..	6d. to 2½d.
Ararat ..	Ararat Town Council ..	A.C., 3 ph., 230-400 v.	5,500	1,285	9d. to 1·25d. ..	3½d. to 1¼d.
Beaufort ..	Ripon Shire Council ..	A.C., 3 ph., 230-400 v.	1,400	293	10l. ..	4d.
Beechworth ..	Beechworth Shire Council ..	A.C., 3 ph., 230-400 v.	2,600	485	1s. ..	6½d.
Berriwillock ..	Wycheproof Shire Council ..	A.C., 3 ph., 230-400 v.	..	(Incl. in Wycheproof)	11d. to 9d. ..	5d. to 3½d.
Beulah ..	Karkarooc Shire Council ..	D.C., 230-460 v. ..	450	140	1s. 3d. ..	4d.
Birchip ..	Birchip E.S. Co. Ltd. ..	D.C., 230 v. ..	500	200	1s. ..	6d. to 4d.
Boort ..	Boort Co-op. Butter and Ice Co. Ltd. ..	D.C., 230 v. ..	550	189	1s. 3d. to 9d. ..	6d. to 4d.
Broadford ..	Broadford Shire Council ..	D.C., 230 v. ..	1,294	233	9d. ..	6d.
Cardross ..	Mildura City Council ..	A.C., 3 ph., 230-400 v.	..	(Incl. in Mildura)	9½d. to 6½d. ..	Dom. 2½d. to 1d.
Casterton ..	Casterton E.S. Co. Pty. Ltd. ..	D.C., 230 v. ..	1,800	432	9d. to 7d. ..	4d. to 1·1d.
Charlton ..	Charlton E.L. and P. Co. Ltd. ..	D.C., 230 v. ..	1,064	356	1s. to 7d. ..	5d. to 3d.
Cohuna ..	Gunbower Co-op. Butter Factory and Trading Co. Ltd. ..	A.C., 3 ph., 230-400 v.	1,050	319	1s. to 9d. ..	6d. to 2d.
Coleraine ..	Hamilton E.S. Co. Ltd. ..	A.C., 3 ph., 230-400 v.	900	218	1s. to 9d. ..	6d. to 1·65d.
	Corindhap Hydraulic G.S. Co. N.L. ..	A.C., 3 ph.	No supply to consumers	
Corryong ..	Shire of Upper Murray ..	A.C., 3 ph., 230-400 v.	550	184	1s. 3d. ..	6d. to 3d.
Culgoa ..	Wycheproof Shire Council ..	A.C., 3 ph., 230-400 v.	..	(Incl. in Wycheproof)	11d. to 9d. ..	5d. to 3½d.
Dimboola ..	Dimboola Shire Council ..	D.C., 230-460 v. ..	1,690	463	1s. to 8d. ..	6d. to 3d.
Donald ..	Donald Shire Council ..	D.C., 230 v. ..	1,400	402	1s. and 10d. ..	6d. to 1½d.
*Doncaster and Templestowe	Doncaster Shire Council ..	A.C., 1 ph., 200-400 v.	2,600	624	7d. ..	4d. to 9d.
Dumosa ..	Wycheproof Shire Council ..	A.C., 3 ph., 230-400 v.	..	(Incl. in Wycheproof)	11d. to 9d. ..	5d. to 3½d.
Edenhope ..	Edenhope E.S. Co. Pty. Ltd. ..	D.C., 230 v. ..	500	78	1s. 3d. ..	9d.
Elmore ..	Elmore E.L. and P. Co. Ltd. ..	D.C., 230 v. ..	700	182	1s. 2d. ..	9d. to 7d.
Goroke ..	Goroke Butter and Freezing Co. ..	D.C., 230 v. ..	250	63	1s. 4d. to 9d. ..	6d. to 3d.
Gunbower ..	Gunbower Co-op. Butter Factory and Trading Co. Ltd. ..	D.C., 230 v. ..	190	42	1s. to 9d. ..	6d. to 2d.
Hamilton ..	Hamilton E.S. Co. Ltd. ..	{ D.C., 230 v. A.C., 3 ph., 230-400 v. }	6,000	1,534	6d. to 4d. ..	4d. to 2d.
Heathcote ..	McIvor Shire Council ..	D.C., 230-460 v. ..	1,150	235	1s. 4d. ..	8d. to 6d.
Heywood ..	S. F. Block ..	A.C., 3 ph., 230-400 v.	700	143	1s. 3d to 1s. ..	6d to 3d.
Hopetoun ..	Karkarooc Shire Council ..	D.C., 230 v. ..	715	194	10d. and 9d. ..	4d.
Horsham ..	Horsham Town Council ..	{ D.C., 230-460 v. A.C., 3 ph., 230-400 v. }	6,000	1,565	9d. ..	4d. to 2½d.
Inglewood ..	Inglewood Borough Council ..	D.C., 230 v. ..	1,100	224	1s. and 9d. ..	6d. to 2d.
Irymple ..	Mildura City Council ..	A.C., 3 ph., 230-400 v.	..	(Incl. in Mildura)	9½d. to 6½d. ..	Dom. 2½d. to 1d.
Jeparit ..	S. F. Block (trading as "Jeparit Electric Light and Power Station"). ..	D.C., 230 v. ..	850	212	1s. ..	6d.
Kaniva ..	Kaniva Shire Council ..	A.C., 3 ph., 230-400 v.	1,700	196	1s. ..	6d. and 5d.
Kerang ..	Kerang Shire Council ..	A.C., 3 ph., 230-400 v.	3,000	688	7d. to 4d. ..	4d. to 1½d.
Kilmore ..	Kilmore Shire Council ..	D.C., 230 v. ..	1,000	226	10d. to 6d. ..	4d. to 2d.
Koondrook ..	Kerang Shire Council ..	A.C., 3 ph., 230-400 v.	700	112	1s. 3d. ..	9d. to 3½d.
Korong Vale ..	Korong Shire Council ..	A.C., 3 ph., 230-400 v.	..	(See Wedderburn)	1s. 1d. ..	5½d. to 3d.
Manangatang ..	J. Andrews ..	D.C., 230 v. ..	320	58	1s. 4d. ..	6d. to 1d.
Merbein ..	Mildura City Council ..	A.C., 3 ph., 230-400 v.	..	(Incl. in Mildura)	9½d. to 6½d. ..	Dom. 2½d. to 1d.

* Supplied in bulk by State Electricity Commission.

ELECTRICITY SUPPLY UNDERTAKINGS (MUNICIPAL AND PRIVATE)—continued.

Municipality or Centre.	Supply Authority.	System of Supply.	Popu- lation.	Number of Consumers.	Tariffs.	
COUNTRY—con- tinued.					Lighting.	Power.
Mildura ..	Mildura City Council ..	A.C., 3 ph., 230-400 v.	16,000	4,036	City, 7d. to 5½d.; District, 9½d. to 6½d.	City — Dom 2d., Ind. 4½d to 0·9d. Dist. —Dom. 2½d. Ind. 4½d. to 1d
Minyip ..	Dunmunkle Shire Council ..	D.C., 230 v. ..	700	177	1s.	8d. to 2d.
Mitiamo ..	C. W. Sims Jnr. ..	D.C., 230 v. ..	150	20	1s. 6d. to 6d. ..	1s. to 3d.
					Optional Tariff—4s. per month, plus 1s. per unit for first 12 units and 6d. per unit for all over.	
Murchison ..	Waranga Shire Council ..	A.C., 3 ph., 230-400 v.	600	160	1s. 1d. to 9d. ..	5½d. to 2d.
Murrayville ..	Walpeup Shire Council ..	A.C., 3 ph., 230-400 v.	370	77	1s. 3d.	5d. to 2d.
Murtoa ..	Dunmunkle Shire Council ..	D.C., 230 v. ..	1,200	316	9d.	4d. to 2d.
Nagambie ..	Goulburn Shire Council ..	D.C., 230-460 v. ..	750	198	10d.	6d.
Natimuk ..	H. C. Woolmer ..	A.C., 230-400 v. ..	557	100	1s. 3d. to 1s. ..	6d. to 4d.
Nhill ..	Lowan Shire Council ..	D.C., 230-460 v. ..	1,950	505	9d.	5d. to 2d.
Nullawil ..	Wycheproof Shire Council ..	A.C., 3 ph., 230-400 v.	..	(Incl. in Wycheproof)	11d. to 9d. ..	5d. to 3½d.
Omeo ..	Omeo E.S. and Motor Co. Pty. Ltd.	A.C., 3 ph., 230-400 v.	400	81	1s. 6d.	6d.
Orbost ..	Orbost Butter and Produce Co. Ltd.	D.C., 230 v. ..	2,000	420	10d. to 8d. ..	5d. to 2d.
Ouyen ..	Walpeup Shire Council ..	D.C., 230-460 v. ..	1,050	270	†11d.	3d. to 2d.
Phillip Island ..	Phillip Island Shire Council ..	A.C., 3 ph., 230-400 v.	350	134	1s. 1d. and 1s. ..	7d. and 6d.
Portland ..	Portland Borough Council ..	A.C., 3 ph., 230-400 v.	3,000	821	10d. to 6d. ..	5d. to 2d.
Pyramid ..	Gordon Shire Council ..	A.C., 3 ph., 230-400 v.	450	109	1s. 3d. to 6d. ..	6d. to 3d.
Quambatook ..	Kerang Shire Council ..	D.C., 230 v. ..	500	102	1s. 1d. to 1s. ..	6d. to 4d.
Rainbow ..	Frank Dawson Pty. Ltd. ..	D.C., 230 v. ..	1,007	206	1s. to 8d.	6d.
Red Cliffs ..	Mildura City Council ..	A.C., 3 ph., 230-400 v.	..	(Incl. in Mildura)	9½d. to 6½d. ..	Dom. 2½d. Ind. 4½d. to 1d.
Rupanyup ..	Dunmunkle Shire Council ..	D.C., 230 v. ..	700	149	1s. 1d.	8d. to 2d.
Rushworth ..	Waranga Shire Council ..	D.C., 230 v. ..	1,200	298	8d.	3½d. to 2d.
Sea Lake ..	Wycheproof Shire Council ..	A.C., 3 ph., 230-400 v.	..	(Incl. in Wycheproof)	11d. to 9d. ..	5d. to 3½d.
Serviceton ..	C. C. Wallis ..	D.C., 230 v. ..	150	36	1s.	6d.
Stawell ..	Stawell Borough Council ..	A.C., 3 ph., 230-400 v.	4,500	1,170	9d.	4d. to 1½d.
St. Arnaud ..	St. Arnaud Borough Council ..	A.C., 3 ph., 230-400 v.	2,650	711	11d. to 6d. ..	5d. to 2½d.
Swan Hill .. (Borough)	Swan Hill Borough Council ..	A.C., 3 ph., 230-400 v.	5,000	1,042	8d. to 3d.	5d. to 1½d. less 45%
Swan Hill (Rural Supply)	Swan Hill Shire Council ..	A.C., 3 ph., 230-400 v.	1,180	618	1s. 1d. to 6d. ..	5d. to 3d.
Underbool ..	A. J. Gloster ..	D.C., 230 v. ..	200	39	1s. 6d.	8d. to 6d.
Warracknabeal ..	Warracknabeal E.L. Co. Ltd. ..	A.C., 3 ph., 230-400 v.	2,925	682	10d. and 9d. ..	6d. to 3d.
Wedderburn .. (Incl. Korong Vale)	Korong Shire Council ..	A.C., 3 ph., 230-400 v.	1,510	Wedderburn, 181 Korong Vale, 102	1s. 1d.	5½d. to 3d.
Wonthaggi ..	State Coal Mine ..	A.C., 3 ph., 240-415 v.	4,400	1,522	7d.	3d. to 1½d.
Wycheproof .. (Incl. Sea Lake and Inter- mediate Towns)	Wycheproof Shire Council ..	A.C., 3 ph., 230-400 v.	2,200	546	11d. to 9d. ..	5d. to 3½d.
Yarram ..	Yarram H.E. Co. Ltd. ..	A.C., 3 ph., 230-400 v.	1,400	454	11d. and 10d.	4d. to 2d.

† Special per capita tariff for Guest houses.

NEW SOUTH WALES UNDERTAKINGS (BULK SUPPLIES).

(Not included in Summary.)

Municipalities of Albury, Berrigan, Coreen, Corowa, and Moama purchased from the State Electricity Commission of Victoria 14,954,763 kWh. during the year.

STATE ELECTRICITY COMMISSION OF VICTORIA.

COUNTRY UNDERTAKINGS ACQUIRED—INCREASED DEVELOPMENT SINCE ACQUISITION.

Location.	Acquisition Date.	After Acquisition, Year 1944-45.		Prior to Acquisition.			Average Revenue per kWh. Sold.	
		kWh. Sold.	Revenue.	kWh. Sold.	Revenue.	For Year Ended.	1944-45.	Prior to Acquisition.
Metropolitan Branch.								
Werribee	10.4.24	2,665,256	18,034	61,190	2,575	30.9.23	1.62	10.10
Ballarat Branch.								
Ballan	1.3.40	66,024	1,073	13,261	964	30.6.39	3.90	17.45
Daylesford	31.10.40	910,335	7,160	184,853	5,091	30.10.40	1.89	6.61
Hepburn Springs	1.10.40	109,075	1,839	46,002	1,701	30.6.40	4.05	8.87
Wallace	17.5.40	69,139	421	1,320	90	30.6.39	1.46	16.36
Bendigo Branch.								
Eaglehawk	1.2.36	419,522	6,140	198,580	4,472	30.9.35	3.51	5.40
Eastern Metropolitan Branch.								
Dandenong	1.10.23	3,072,516	25,170	77,300	4,006	30.9.23	1.97	12.44
Frankston	21.2.28	3,762,547	28,138	293,000	8,859	30.9.27	1.79	7.25
Healesville	1.4.33	1,257,026	13,339	108,910	4,196	30.9.31	2.55	9.24
Lilydale	1.4.25	805,702	5,565	39,950	1,816	30.9.24	1.66	10.91
Mornington	1.8.30	1,600,367	11,308	120,000	4,634	30.9.28	1.70	9.26
Ringwood and Croydon	1.4.25	3,238,720	22,293	181,600	4,393	30.9.24	1.65	5.81
Sorrento and Portsea	1.10.27	847,344	7,915	47,500*	2,440	30.9.27	2.24	12.33*
Warburton	1.7.44	258,965	3,333	112,555	3,485	30.6.44	3.09	7.48
Gippsland Branch.								
Bairnsdale	1.4.27	2,536,879	17,425	100,272	2,948	30.6.23	1.65	7.06
Drouin	3.10.24	727,321	4,715	19,500	743	30.9.21	1.56	9.15
Garfield	1.8.29	81,568	801	8,864	465	30.12.27	2.36	12.59
Inverloch	1.10.34	105,760	1,126	4,000*	200	30.6.34	2.56	12.00*
Koo-wee-rup	1.8.35	296,695	2,369	17,481	686	9.8.33	1.92	9.42
Korumburra	1.12.24	1,314,901	8,107	85,000	3,427	30.9.23	1.48	9.68
Leongatha	15.2.24	881,601	6,878	50,640	2,012	30.6.23	1.87	9.53
Maffra	1.9.24	2,763,607	13,763	62,000	2,651	30.9.22	1.20	10.26
Morwell	1.4.26	13,620,420	38,316	52,062	1,772	30.9.25	0.68	8.17
Neerim South—Noojee	15.1.35	688,899	4,356	59,550	1,193	30.6.33	1.52	4.81
Sale	1.7.24	4,656,192	26,825	114,155	3,687	30.6.24	1.38	7.75
Toora—Foster	1.5.38	579,386	4,500	116,330	2,348	30.6.36	1.86	4.84
Thorpdale	23.12.37	55,744	534	5,000*	312*	23.12.37	2.30	14.98*
Warragul	1.12.30	1,535,970	12,358	150,000*	4,830	30.11.30	1.93	7.73*
Welshpool	13.8.38	57,176	657	5,280	172*	13.8.38	2.76	7.82*
Midland Branch.								
Avoca	1.8.40	127,283	1,747	46,410	1,922	30.6.40	3.29	9.94
Bacchus Marsh	2.6.41	1,052,693	8,313	253,913	4,225	30.9.40	1.90	3.99
Castlemaine	31.12.29	2,829,645	17,042	175,904	7,130	31.12.28	1.45	9.73
Dunolly	1.4.38	102,420	1,422	32,667	1,188	30.9.37	3.33	8.73
Gisborne	1.10.28	178,513	1,767	17,000	1,074	30.9.27	2.38	15.16
Kyneton	1.10.29	738,552	7,577	143,340	5,433	30.9.27	2.46	9.09
Maryborough	1.10.37	2,282,978	16,564	421,013	10,215	30.9.37	1.74	5.82
Sunbury	1.5.26	392,640	4,408	58,501	2,490	30.9.24	2.69	10.21
Trentham	8.5.39	96,100	1,364	21,000*	989	30.9.38	3.41	11.30*
Woodend	1.8.29	311,634	3,339	51,000	2,555	30.9.27	2.57	12.02
North-Eastern Branch.								
Alexandra	11.4.27	388,615	3,343	64,000*	1,875	30.9.26	2.06	7.00*
Benalla	1.5.26	1,403,422	13,255	70,800	3,373	30.9.24	2.27	11.43
Bright	1.12.41	269,337	2,152	49,200	1,801	31.10.41	1.92	8.79
Cobram	1.10.28	392,175	3,381	19,500	1,416	30.9.27	2.07	17.43
Euroa	20.3.28	385,270	4,256	46,618	1,782	30.9.25	2.65	9.17
Kyabram	1.12.26	1,052,718	7,849	92,312	3,462	4.7.25	1.79	9.00
Mansfield	1.6.28	244,568	2,616	25,000	1,341	30.9.27	2.57	12.88
Mooroopna	1.10.26	1,352,814	6,754	40,000	1,457	30.9.25	1.20	8.74
Myrtleford	1.12.40	417,271	3,465	59,260	2,089	30.6.40	1.99	8.46
Nathalia and Numurkah	1.10.31	636,989	6,322	96,763	3,619	30.9.31	2.38	8.97
Rochester	1.8.35	581,388	4,731	191,310	4,223	31.7.35	1.95	5.30
Rutherglen	15.10.26	372,220	3,490	28,392	1,377	30.9.24	2.25	11.64
Shepparton	1.1.25	3,555,967	26,623	163,400	4,625	30.6.24	1.80	6.79
Stanhope	14.6.38	356,609	2,486	5,150*	341	14.6.38	1.67	15.89*
Tallangatta	1.11.40	221,896	2,310	118,033	3,119	30.9.40	2.50	6.34
Tatura	1.11.26	708,293	5,758	40,000	1,710	30.6.25	1.95	10.26
Violet Town	1.3.36	73,059	1,026	14,650*	1,160	30.9.35	3.37	19.00*
Wahgunyah	1.2.26	67,768	740	7,233	263	30.9.22	2.62	8.73
Wangaratta	12.3.27	3,123,407	21,713	151,600	4,788	30.9.25	1.67	7.58
Wodonga	1.11.33	647,880	6,685	64,500*	3,000*	30.6.33	2.48	11.16*
Yarrawonga	1.8.25	921,457	7,411	47,000	2,149	30.9.24	1.93	10.97
South-Western Branch.								
Camperdown	1.1.24	919,802	8,068	97,664	4,122	30.9.23	2.11	10.13
Colac	1.9.23	1,861,137	17,510	99,000	2,673	30.9.22	2.26	6.48
Koroit	1.12.28	258,467	2,511	50,000	2,319	30.9.28	2.33	11.13
Lorne	15.12.36	468,955	4,304	24,000	1,658	30.9.36	2.20	16.58
Mortlake	16.5.24	249,614	2,526	35,306	1,626	30.9.22	2.43	11.05
Terang	4.3.24	554,440	5,530	78,839	3,439	30.9.23	2.39	10.47
Total	78,582,683	534,816	5,336,433	178,196	..	1.63	8.01

* Approximate only.

COMPARISON OF TOTAL FIGURES.

	kWh. Sold.	Revenue.	Average Revenue per kWh.
		£	d.
After acquisition	78,582,683	534,816	1.63
Prior to acquisition	5,336,433	178,196	8.01
Increase in sales and revenue	1,372.6%	200.1%	Decrease 6.38 = 79.7%

STATE ELECTRICITY COMMISSION OF VICTORIA.

TRANSMISSION AND DISTRIBUTION SYSTEMS.

Description.	Increase during Year ended 30th June, 1945.		Total at 30th June, 1945.	
	Route Miles.	Cable Miles.	Route Miles.	Cable Miles.
OVERHEAD LINES.				
Yallourn to Yarraville 132 kV.	110·0	660·0
Yallourn to Richmond 132 kV.	80·0	480·0
Yarraville to Geelong 66 kV.	45·3	135·9
Sugarloaf to Thomastown 66 kV.	62·0	345·0
Thomastown to Bendigo 66 kV.	93·4	557·7
Newport to Ballarat 66 kV.	54·8	163·5
Kiewa No. 3 to Sugarloaf 66 kV.	123·3	369·9	123·3	369·9
Main Metropolitan Transmission Lines 66 kV.	31·5	16·0	96·0
.. .. 22 kV.	1·0	3·0	172·6	577·7
Branches—				
Metropolitan 22 kV.	17·6	54·6	77·4	229·0
.. .. 7·2, 6·6, 4·16 kV.	6·0	25·0	319·2	932·0
.. .. Low tension	16·9	85·2	173·6	6,556·5
Ballarat 22 kV.	9·1	19·9	150·9	435·1
.. .. 6·6 kV.	4·8	9·9	39·3	111·2
.. .. Low tension	10·8	34·6	186·6	670·6
Bendigo 22 kV.	35·6	71·2	98·4	262·4
.. .. Low tension	12·2	34·2	146·6	575·5
Eastern Metropolitan 22 kV.	20·2	50·3	411·9	1,059·3
.. .. 6·6 kV.	6·2	13·4	103·5	239·8
.. .. Low tension	55·4	226·8	623·4	2,030·6
Geelong 22 kV.	6·2	12·3	102·4	266·3
.. .. 6·6 kV.	2·7	3·8	61·3	221·7
.. .. Low tension	4·6	16·6	178·3	645·4
Gippsland 22 kV.	36·5	91·7	1,014·2	2,529·8
.. .. 6·6 kV.	1·2	2·3
.. .. Low tension	52·6	161·9	675·7	2,212·5
Midland 22 kV.	26·8	73·5	329·4	906·4
.. .. 6·6 kV.	1·6	4·7
.. .. Low tension	3·7	28·5	205·5	695·0
North-Eastern 66 kV.	85·5	268·9	167·3	501·8
.. .. 22 kV.	95·8	228·1	823·7	2,244·8
.. .. 6·6 kV.	30·7	92·2	30·7	92·2
.. .. Low tension	57·1	201·1	414·5	1,451·0
South-Western 66 kV.	76·7	369·5	76·7	369·5
.. .. 44 kV.	71·7	353·6	44·6	133·9
.. .. 22 kV.	166·3	339·8	888·7	1,918·4
.. .. 6·6 kV.	32·1	58·9	63·6	176·5
.. .. Low tension	13·2	50·7	323·0	863·0
Yallourn 6·6 kV.	0·7	2·0	5·6	16·7
.. .. Low tension	0·5	2·3	12·6	39·1
Summary—				
.. .. 132 kV.	190·0	1,140·0
.. .. 66 kV.	114·5	502·0	638·8	2,539·3
.. .. 44 kV.	71·7	353·6	44·6	133·9
.. .. 22 kV.	415·1	944·4	4,069·6	10,429·2
.. .. 7·2, 6·6, 4·16 kV.	19·0	87·4	626·0	1,797·1
.. .. Low tension	227·0	841·9	4,502·8	15,739·2
	703·9	2,022·1	10,071·8	31,778·7
UNDERGROUND CABLES.				
	Cable Miles.		Cable Miles.	
22 kV.	0·43		137·54	
11, 7·2, 6·6, 4·16 and 3·3 kV.	1·90		333·84	
Pilot, telephone, and supervisory	8·32		117·88	
Low tension	1·65		53·59	
	8·13		642·85	
SUB-STATIONS.				
	Number.	Capacity kVA.	Number.	Capacity kVA.
Terminal Stations	8	418,200
Main Metropolitan Transmission Sub-stations	1	27,500	31	413,000
Distribution Sub-stations at Line Voltage	3	6,200	10	27,700
Branches—				
Metropolitan	32	9,075	798	212,085
Ballarat	13	370	114	7,255
Bendigo	22	655	73	21,225
Eastern Metropolitan	48	1,340	538	17,697
Geelong	11	285	158	23,105
Gippsland	50	1,885	793	21,370
Midland	44	2,785	221	16,885
North-Eastern	139	5,805	582	57,375
South-Western	148	5,752	788	31,307
Yallourn	1	200	12	1,575
	512	61,852	4,126	1,268,779

GENERATION OF ELECTRICITY.

STATE OF VICTORIA.

(a) ALL SUPPLY AUTHORITIES.

Authority.	State Electricity Commission	Melbourne City Council.	Victorian State Railways.			Melbourne Electric Supply Co. Ltd.		Electric Supply Co. of Victoria Ltd.		Local Authorities.	Total kWh. Generated State of Victoria. (millions).
Stations.	See below.	Spencer-street, Melbourne.	Newport "A."			Richmond.	Geelong.	Ballarat.	Bendigo.	Country Centres not Served by State Generating System. kWh. (millions).	
Year.	kWh. (millions).	kWh. (millions).	kWh. (millions).			kWh. (millions).	kWh. (millions).	kWh. (millions).	kWh. (millions).		
			(1).	(2).	Total.						
1924-25	101·8	20·0	108·0	152·7	260·7	25·3	18·0	4·0	3·5	14·0	447·3
1925-26	188·7	17·7	74·8	163·7	238·5	34·9	21·1	4·1	3·5	14·0	522·5
1926-27	284·2	14·6	27·0	169·1	196·1	38·1	30·3	4·4	3·6	15·0	586·8
1927-28	378·8	13·5	12·9	166·2	179·1	4·2	30·3	5·0	4·2	16·0	631·1
1928-29	422·3	16·0	12·0	162·5	174·5	..	32·2	5·3	4·5	16·0	670·8
1929-30	461·2	17·1	11·3	164·7	176·0	..	27·3	5·1	4·5	15·0	706·2
1930-31	458·3	12·1	15·5	154·1	169·6	..	4·7	4·9	4·8	15·0	669·4
1931-32	504·9	12·3	9·7	146·8	156·5	4·9	5·0	16·0	699·6
1932-33	549·7	10·0	10·4	150·2	160·6	5·2	5·1	17·0	747·6
1933-34	590·0	14·7	10·5	151·9	162·4	5·8	5·3	18·0	796·2
1934-35	620·1	23·9	35·2	156·2	191·4	Stations acquired by State Electricity Commission.				20·0	855·4
1935-36	716·1	35·6	12·2	159·1	171·3	22·0	945·0
1936-37	769·7	33·9	14·1	162·9	177·0	23·0	1,003·6
1937-38	836·1	34·7	14·5	165·2	179·7	26·0	1,076·5
1938-39	897·8	29·5	13·8	168·9	182·7	28·0	1,138·0
1939-40	1,024·2	33·3	14·5	153·7	168·2	26·0	1,251·7
1940-41	1,155·1	16·9	17·2	167·4	184·6	21·0	1,377·6
1941-42	1,330·5	Station now operated as part of State system.	17·9	163·4	181·3	21·0	1,532·8
1942-43	1,455·4		14·6	151·5	166·1	22·0	1,643·5
1943-44	1,475·6		15·2	153·8	169·0	24·0	1,668·6
1944-45	1,502·3		14·7	168·7	183·4	24·0	1,709·7

(1) 25 cycle supplied to other authorities.

(2) 25 cycle Railway purposes.

GENERATION OF ELECTRICITY.
STATE OF VICTORIA.
(b) STATE ELECTRICITY COMMISSION OF VICTORIA.

Station. Year.	Yallourn.*		Newport "B."		Richmond.		Geelong.		Ballarat and Bendigo.		Spencer-street.		Sugarloaf-Rubicon.		Kiewa.		All Stations.	
	kWh. (millions).	M.D. kW.	kWh. (millions).	M.D. kW.	kWh. (millions).	M.D. kW.	kWh. (millions).	M.D. kW.	kWh. (millions).	M.D. kW.	kWh. (millions).	M.D. kW.	kWh. (millions).	M.D. kW.	kWh. (millions).	M.D. kW.	kWh. (millions).	M.D. kW. Coincident.
1924-25	48·4	29,000	53·4	15,800	101·8	40,500
1925-26	142·7	37,500	46·0	16,800	188·7	50,000
1926-27	238·8	61,000	45·4	19,800	284·2	76,000
1927-28	319·7	68,500	54·3	20,800	378·8	87,500
1928-29	304·5	64,000	49·0	20,000	3·5	15,000	4·8	11,500	422·3	95,500
1929-30	310·6	62,500	50·8	21,000	21·9	16,200	77·9	19,300	461·2	103,160
1930-31	251·9	63,000	38·4	19,800	26·6	15,250	20·5	5,570	120·9	23,100	458·3	109,013
1931-32	320·1	80,000	9·8	18,800	25·7	15,000	26·9	6,510	122·4	23,400	504·9	116,959
1932-33	386·2	88,500	2·8	14,400	22·5	15,360	27·1	6,560	111·1	23,400	549·7	123,404
1933-34	429·3	95,000	7·6	18,500	22·6	15,120	29·5	6,690	101·0	22,800	590·0	127,621
1934-35	310·8	94,000	54·0	18,200	56·5	15,500	30·8	6,980	12·7	3,711	155·3	25,300	620·1	141,993
1935-36	487·6	107,500	16·7	19,300	29·8	15,100	34·1	7,930	13·2	3,825	134·7	25,400	716·1	158,862
1936-37	531·2	122,500	27·2	19,000	25·3	15,400	32·1	7,930	12·5	3,750	141·4	25,490	769·7	173,300
1937-38	654·8	140,500	27·1	18,600	24·2	15,300	34·4	8,620	10·0	3,797	85·6	25,090	836·1	181,847
1938-39	696·6	136,500	23·9	19,600	26·7	15,200	38·0	9,230	9·4	2,716	103·2	24,300	897·8	198,000
1939-40	776·1	168,000	39·3	35,000	16·2	15,400	31·5	7,710	11·6	2,988	149·5	25,400	1,024·2	218,600
1940-41	939·5	171,500	44·6	45,300	21·2	15,360	21·7	10,050	14·3	3,820	16·0	26,000	97·8	20,800	1,155·1	261,820
1941-42	1,027·3	187,500	45·2	54,800	35·2	15,540	30·7	10,600	14·6	4,140	44·1	35,000	133·4	25,600	1,330·5	297,696
1942-43	1,110·1	186,000	45·8	63,000	38·6	15,600	34·3	11,800	15·0	5,960	55·4	33,000	156·2	26,100	1,455·4	319,300
1943-44	1,088·0	188,000	83·3	71,600	44·5	15,600	44·8	12,200	20·8	5,400	63·8	40,650	130·4	25,700	1,475·6	328,000
1944-45	1,133·2	187,000	92·1	89,500	40·2	15,530	38·8	10,750	18·9	5,000	59·3	35,070	101·1	25,500	18·7	24,000	1,502·3	351,600

* Including electricity transferred from Briquette Factory.

11th July, 1945.

LOCAL GOVERNMENT—YALLOURN.

GOVERNMENT PROPOSALS AS DECLARED TO MEETING OF YALLOURN SELF-GOVERNMENT DELEGATES COMMITTEE,
THURSDAY, 12TH JULY, 1945.

On the financial side, these proposals are founded on the independent valuation furnished for the Cabinet Committee by Messrs. Looker and Noldt. These gentlemen have advised as follows:—

	£
The <i>Unimproved Capital Value</i> of all the <i>Rateable Properties</i> within the prescribed area is ..	358,885
The <i>Capital Improved Value</i> of all the <i>Rateable Properties</i> within the prescribed area is ..	1,202,233
The <i>Annual or Net Annual value</i> of all the <i>Rateable Properties</i> within the prescribed area is	64,557

However, the Government in dealing with this matter has recognized that there are special conditions related to the history of the town of Yallourn, and arising from the aims of those responsible for its establishment and development. These, too, have been taken care of in the proposals:—

- (i) That there be created a Borough of Yallourn with all the normal powers of a Municipal Council, but with clear and specific safeguards for State Electricity Commission operations and property.
- (ii) That the area of the Borough be the residential parts of Yallourn (but including the hospital and recreation areas) and that part of the residential area of the Brown Coal Mine township owned by the Commission.
- (iii) That neither the Commission's works area nor its forest area form part of the Borough of Yallourn.
- (iv) That the tenants and not the Commission be liable for the municipal rates on the houses or other Commission-owned premises.
- (v) That the Commission be expressly excluded from the liability to pay rates; and that none of the Commission's land in works or town be subject legally to a charge for rates or municipal expenditure.
- (vi) That the Commission pay to the Municipal Council a subsidy which would be adjusted according to the extent of the Commission's investment in the town.
(The payment of this subsidy would be associated in some way with a requirement on the Council to maintain to not less than the 1938 standard, those municipal works for which the Commission so far has undertaken responsibility.)
- (vii) That, at a later stage, the privately-owned part of the Brown Coal Mine township, the settlements of Newborough, Herne's Oak and Morwell Bridge be included in the Borough by decision of the Governor-in-Council on petition of residents, or at the request of these municipalities of which they now form part, or of the proposed new Borough.
- (viii) That the Commission be empowered to make grants to the Council for expenditure on improvements of the amenities of the town of Yallourn and Brown Coal Mine township, such grants to be subject to such conditions as the Commission thinks fit.
- (ix) That the Commission as the Housing Authority continue to construct to its own standard, and at its own cost, all roads and streets, except those under Country Roads Board jurisdiction; all maintenance costs, including reconstruction, to devolve on the Council.
- (x) That, unless and until State building by-laws are brought down, the buildings of the Commission be not subject to council by-laws.

These proposals are made with due regard to the following:—

- (a) That it is necessary to excise from the Morwell and Narracan Shires—
 - (i) the Commission territory of over 8,000 acres: which includes
 - (ii) an area of approximately 300 acres occupied by the Town of Yallourn.
- (b) That there must be no possibility of municipal intervention in the Commission's production and related operations, for in that regard the Commission cannot be subordinate to a Municipal Council and particularly one composed almost wholly of its own employees.
- (c) That, in principle, either the State Electricity Commission or the State Housing Commission, or both, must have responsibility for the housing of Commission employees, and that this responsibility extends to the provision (though not the upkeep) of roads and streets as well as to the general development of housing facilities on a proper plan and to a suitable standard.
- (d) That water supply, sewerage, main drainage and fire prevention are not municipal but Commission responsibilities; nor is trading a municipal responsibility.
- (e) That the principles now decided on for local government in the town of Yallourn should be capable of application to any like centre of population established elsewhere for Commission activities.
- (f) That exemption of the Commission from municipal rates must be maintained, otherwise there will be thrown open to municipal rating not only all assets of the Commission, but the assets of other like State utilities; Government policy is against this.
- (g) That the valuation and cost figures exclude the Old Brown Coal Mine area, where the Commission has not assumed responsibility for housing or streets, but has provided a water supply, sanitary service and electricity supply. The houses are privately owned and erected on leasehold land in keeping with the practice of the Mines Department, from which authority control of the settlement passed to the Commission in 1924 when it purchased the Old Brown Coal Mine from the State. The future of this settlement is a special problem in relation to housing and in the municipal sense. It will need to be so treated as to avoid its being a heavy liability on the proposed Borough. However, the existence of this and other outlying settlements should not be allowed to dominate any conclusion with respect to local government for the town of Yallourn.

On the data at present available to the Cabinet Committee it has been estimated that it would cost the now municipality about £12,000 per annum to maintain the present town of Yallourn generally to pre-war standard. On the annual valuation of the town of £64,000, municipal revenue on a 2s. 2d. rate would approximate to £7,000 per annum. A Commission subsidy of the order of £5,000 per annum would result from the application of clause (vi) of the proposals, which would be expressed in any legislation as a contribution of £500 for each £100,000 invested by the Commission in land, buildings, roads and streets, but not including water supply or sewerage. The Commission has intimated its readiness to subsidize the municipality to that extent.

On the whole, the adjustment of municipal jurisdiction to the special conditions of Yallourn does not, as might be feared, result in marked diminution of the Local Government responsibility. The Borough Council with its own borrowing powers and an assured annual revenue would be charged with such responsibilities as—

- (a) maintenance and reconstruction of all roads (except those under Country Roads Board jurisdiction) streets, right-of-ways, footpaths, kerbing and channelling within the Borough;
- (b) erection and maintenance of civic hall and library;
- (c) construction and maintenance of parks, gardens, playgrounds and street plantations;
- (d) nature and extent of public lighting;
- (e) provision of garbage removal service;
- (f) provision and maintenance of public sanitary conveniences; and

in line with Local Government powers vested in all municipalities the Council would deal with such matters as:—

- (i) determining rates payable by residents;
- (ii) conducting meetings of ratepayers;
- (iii) suppressing nuisances;
- (iv) preserving public decency;
- (v) regulating traffic and processions (except the heavy traffic associated with Commission operations);
- (vi) prohibiting throwing, &c., on public highways;
- (vii) controlling grazing of cattle on unfenced land;
- (viii) prohibiting or minimizing noises on the public highway;
- (ix) destruction of rats and other vermin;
- (x) prohibiting the deposit of rubbish;
- (xi) regulations as to carriage of persons and goods—and use of streets by hawkers and itinerant vendors;
- (xii) control of pounds, abattoirs, and sheep dips;
- (xiii) control of storage of petrol and explosives;
- (xiv) prescribing parking areas;
- (xv) regulating the growing of trees, hedges, &c., likely to interfere with road visibility;
- (xvi) registration of dancing saloons.

The Council would be responsible also for administration of the Health Act, Weights and Measures Act, inspection of bakery, stores or shops, and the Cemeteries Act.

Thus the Borough of Yallourn would be in much the same position as any other community with respect to their municipal services, living conditions, cultural and sporting activities, but with the added advantage of substantial Commission subsidy to maintain the municipality at least to the existing standards.

These proposals have been adopted by the Government as to their main principles, and subject to any representations which may be made by your Committee as to their detailed out-working. The Government's intention, after taking into consideration any further representations which the Committee may wish to make, is to itself place these proposals before the people of Yallourn for acceptance or rejection by referendum. This plebiscite would be arranged by the Local Government Branch of the Public Works Department on behalf of the Government on the basis of definite questions submitted by poll to each householder-tenant in the town. For that purpose the Government will cause to be issued to each householder some days before the poll a definite statement setting out the lines on which the Government proposes to invite Parliament to legislate for local government for Yallourn, and thereby discharge its promise to the Yallourn people.

The Government commends these proposals to the people of Yallourn in the belief that they provide a sufficiently extensive scope of Local Government responsibility for the Government on one hand to agree to the setting up of a Borough of Yallourn, and on the other for the local people as a community to accept it as a task worthy of attention by those equipped and ready to undertake municipal responsibility. Certainly the very status of Municipal Council will give to the local residents a direct link with the Government in their truly local problems instead of via the employer as at present.