

1923-4

VICTORIA

COUNTRY ROADS BOARD

TENTH ANNUAL REPORT

FOR YEAR ENDED 30TH JUNE, 1923.

PRESENTED TO BOTH HOUSES OF PARLIAMENT PURSUANT TO ACT No 2635.

[Cost of Report.—Preparation, not given. Printing, 950 copies, £196.]

By Authority:

ALBERT J. MULLETT, GOVERNMENT PRINTER, MELBOURNE.

No. 40 -[2s]-2898



COUNTRY ROADS BOARD.

TENTH ANNUAL REPORT.

Melbourne, 31st March, 1924.

The Honorable H. I. Cohen, K.C., M.L.C., Minister of Public Works.

SIR,

In compliance with the requirements of Section 73 of the Country Roads Act, No. 2635, I have the honour to submit to you the Tenth Annual Report of the proceedings of the Board, together with the balance-sheets, statements of accounts, and appendices for the year ended 30th June, 1923.

The work accomplished by the Board during the year has been on the lines of that done in previous years, namely :—

1. The construction of new roads and bridges on main and developmental roads ; and
2. The improvement and maintenance of existing main roads ;

the former being dependent on Loan Funds provided under Acts passed by the State Legislature and the latter on the revenue received into the Country Roads Board Fund. These funds were, however, supplemented in July, 1922, by the Federal Government making available, for the relief of unemployment, the sum of £70,000 as Victoria's quota of a road grant of £250,000, on condition that the State provided a similar amount. This condition was fulfilled by the State Government, and the major portion of £140,000 was set apart for expenditure under the authority and supervision of this Board.

MAIN ROADS.

PERMANENT WORKS.

Of the provision of £500,000 made under Act No. 3137, the sum of £266,046 3s. 1d. was expended on constructional works on declared main roads during the year, as compared with an expenditure of £288,937 1s. 6d. during the previous financial year, making a total expenditure on Permanent Works since the Board's inception of £2,732,155 8s. 4d.

On account of the restriction imposed by Section 2 of Act No. 286A, by which a Council's liability in respect of expenditure on Permanent Works was limited to a sum not exceeding the product of a rate under the Local Government Act of 6d. in the £1 on the net annual value of the rateable property within the municipal district, the Board has been precluded from authorizing any further permanent works in several municipalities, although it was recognised that the carrying out of these works was an urgent necessity in linking up sections of roads already constructed and completing those under construction. This disability has, however, since been removed by Act of Parliament passed towards the end of 1923.

One of the most important of the permanent works completed by the Board was the erection of a composite reinforced concrete and steel bridge over the Wodonga Creek at Wodonga, in the Shire of Wodonga, at a cost to date of £23,337 6s. 1d. This structure, which is the largest of its kind yet undertaken by the Board, is situated at the north-eastern gateway of the State, is 501 feet long and contains twelve spans. Each pier is founded on three concrete cylinders of 5 ft. 6 in. diameter, sunk into the material of the river bed, which consists of gravel and sandy clay. The beams, which are 7 feet apart, carry a reinforced concrete slab deck 9 inches thick. The roadway on the approaches is 20 feet wide between kerbs, constructed with tar macadam, and provision has also been made for a footway 6 feet in width. By generally improving the waterway and erecting

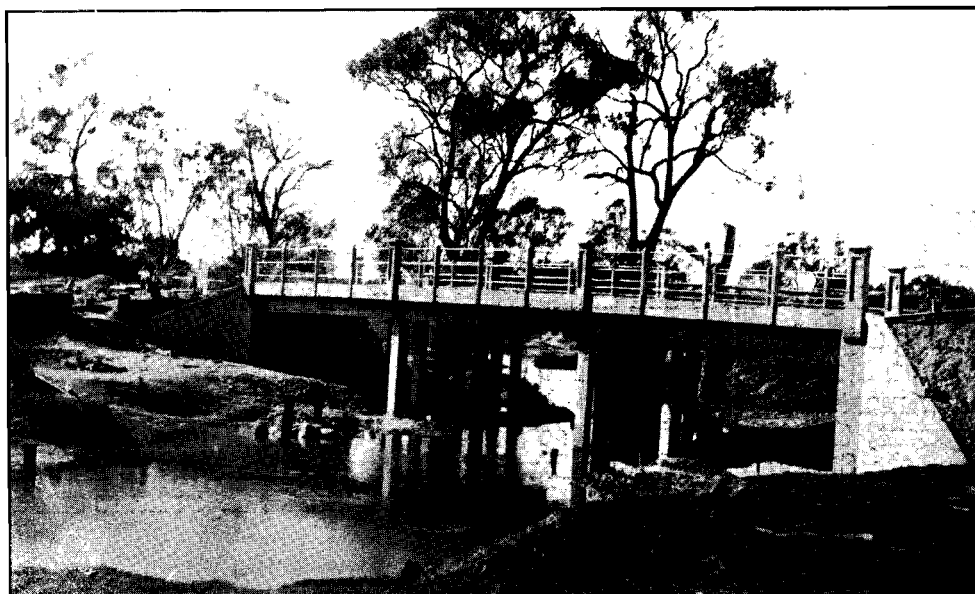
the new bridge in a suitable location, ample provision has been made, not only for avoiding damage by flood waters from the River Murray, but also for preventing interruptions to Inter-State traffic which were frequently caused when the old structure was in use.



Bridge at Wodonga in Murray basin—Main Sydney Road.

On the main Sydney-road in the Borough of Wangaratta, a reinforced concrete bridge over the One Mile Creek, consisting of three spans of 25 feet each, was completed at a cost of £2,492.

Photograph of this structure is shown hereunder :—



One Mile Creek Bridge, Main Sydney Road, Wangaratta.

Among the largest of the road construction works in progress or completed at the 30th June last, may be mentioned the following :—

1. *Alberton Shire.*

(a) *Foster-Yarram Road.*—Forming, grading, and metalling section of road at Curran's Flat.

Previous to the construction of this section, the whole of the Yarram district and territory easterly was isolated from South Gippsland during the winter months.

(b) *Yarram-Boolarra Road.*—

- (1) Forming, grading, and metalling approximately $2\frac{1}{2}$ miles ; and
- (2) Clearing, grubbing, and side-cutting 3,600 feet.

This work is in continuation of the construction of a metalled roadway on suitable gradients, from Yarram extending into the Hill Country.

2. *Frankston and Hastings Shire.*

Point Nepean-road.—Clearing, forming, and metalling on the deviation beyond Frankston.

By the construction of this deviation a dangerous bend on steep gradients has been obviated, and a more direct route obtained.

3. Lawloit Shire.

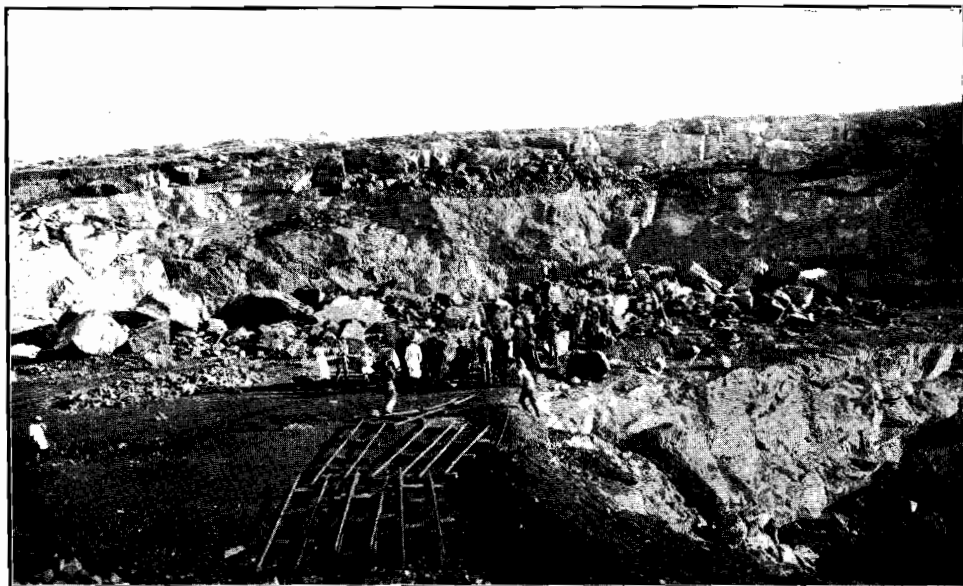
Nhill-Kaniva-Border Road.—Forming, grading, and metalling.

The work done on this section of the road, leading from the township and railway system at Kaniva, has been the means of providing a metalled road on each side of the railway line, extending into valuable agricultural districts.

4. Shepparton Shire.

Shepparton-Nagambie Road.—Metalling by day labour.

In this district, which is the centre of one of the most extensive irrigated horticultural areas in the State, an extensive programme of road construction works is being carried out, including the metalling by day labour of sections of main roads. On the Shepparton-Nagambie Road a considerable length of roadway was constructed during the year. These works were made possible by the enterprise of the Shepparton and Rodney Shires in opening up and equipping a metal quarry, which is the largest undertaking of its kind established by country municipalities.



Shepparton and Rodney Shires Quarry at Dookie.



Shepparton-Nagambie Road, Shepparton Shire.

5. *Upper Murray Shire.*

Corryong-road.—Clearing, forming, and metalling between Colac Colac and Cudgewa, and erection of timber bridge over Nariel Creek.

The extension of the railway line to Cudgewa in the Upper Murray district has necessitated the construction of substantial road and bridge works between Corryong and the new railway terminus, and the work done includes the re-location, forming and metalling of the roadway leading to the railway station, as well as the erection of the bridge.

6. *Walpeup Shire.*

Ouyen-Pinnaroo Road.—Clearing, forming, and metalling various sections.

This work comprises the metalling of sections of the road leading to railway stations on the line between Ouyen and Murrayville.

MAINTENANCE.

Although the amount received into the Country Roads Board Fund for the past financial year represents an increase on the revenue for the previous year, such increase has not been commensurate with the additional cost of maintenance, due to the rapidly increasing number of motor vehicles, especially the heavier type used for commercial purposes. The increased traffic on country roads, due to the improvement effected—year by year—to the surfaces, and the construction of sections that were formerly impassable during the winter months, necessarily causes additional wear and tear and a consequent increase in the cost of maintenance. The necessity for increased maintenance is becoming particularly marked in the case of main arterial roads, and, in many instances, the cost has increased to such an extent that Municipal Councils are called upon to shoulder a financial burden which is now almost beyond their resources, even though one-half only of the cost is contributed by them as required by the Country Roads Act.

On account of the density of traffic on main roads radiating from the metropolis, special attention was given by the Board to the treatment of these roads with tar and bitumen, a total length of 61 miles having been thus treated, of which 42 miles were sprayed with bitumen and 19 miles with distilled tar applied with the Board's mechanical sprayers.

Owing to the increase in the price of distilled tar, a reduction in the cost of bitumen at the same time, and the recognised superior wearing qualities of the latter, bitumen was used wherever road conditions were suitable. The cost of this application is, on the average, £200 per mile for a coat 15 feet wide, but this cost varies according to the price paid for the necessary screenings or fine gravel, which require to be of the hardest and cleanest description available. It has been ascertained that approximately 100 tons of screenings or gravel per mile of roadway treated are required.

The screenings, which are spread immediately following the spraying, require to be rolled with a heavy steam or motor roller until the bitumen flushes the surface, when a light coat of sand or stone dust is spread to provide a sealing coat.

This treatment will, it is anticipated, prove successful for all country roads carrying traffic up to 1,000 tons per day; but when that limit is exceeded, a coat of bituminous macadam will be necessary.

As shown by the Statement of Accounts, the sum of £288,129 3s. 9d. was expended on the maintenance of main roads for the year, which amount was the largest expended in any one year, but this sum is far short of that required for the adequate and proper maintenance of main roads and the requirements of traffic.

DEVELOPMENTAL ROADS.

PERMANENT WORKS.

Of the provision of £2,000,000 made under Acts Nos. 2944 and 2985 for the construction of permanent works on developmental roads, the sum of £265,032 1s. 10d. was expended, whilst

an expenditure of £99,079 13s. 6d. was incurred out of the provision of £500,000, made annually for four years from the 1st January, 1923, making a total expenditure for the year ended 30th June last of £364,111 15s. 4d. as against a total of £627,092 11s. 4d. for the previous year.

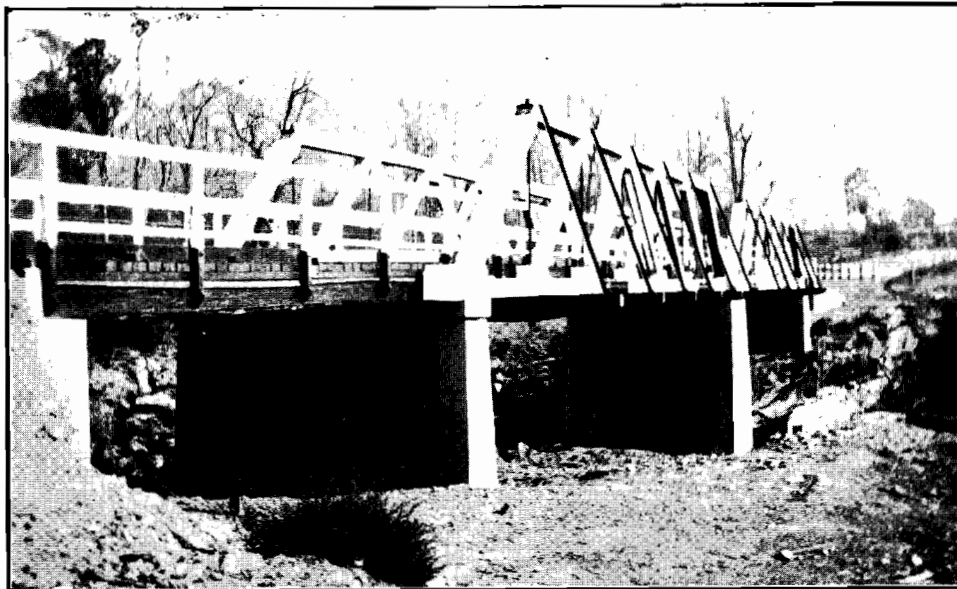
Owing to the difficulty in securing suitable contracts for many of the more important road construction works, arrangements were made for carrying out the work by day labour. Of these, the most extensive is situated on the Main South Road in the Shire of Buln Buln. The shire council, having established and equipped a quarry at Drouin, was in a position to supply metal of excellent quality, which was transported from the quarry for a distance of 9 miles by means of motor lorries supplied by the Board for the purpose. The total cost of the work for the year amounted to £11,184.

The class of work done is illustrated in the accompanying plate.



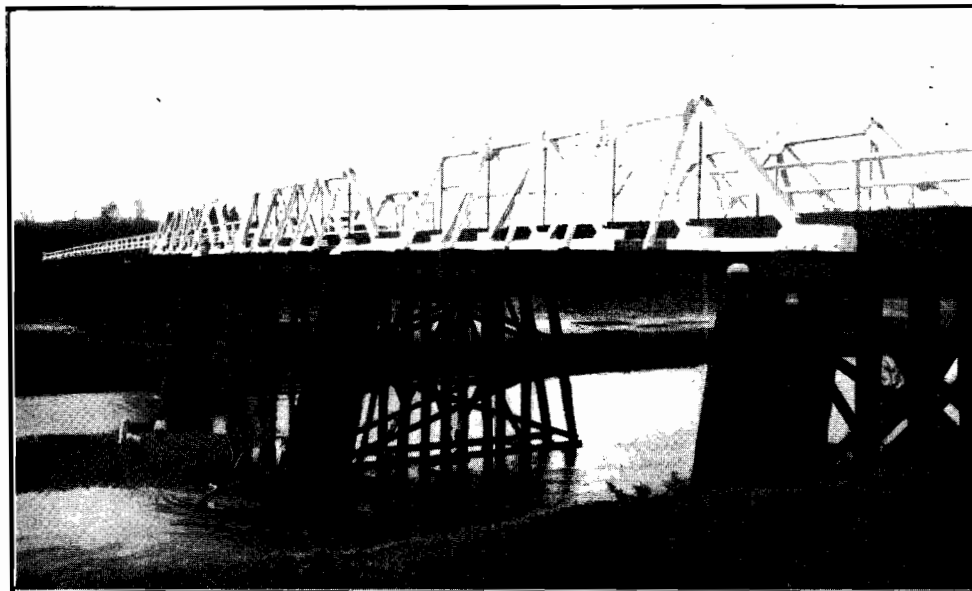
South Road, Buln Buln Shire.

Another important work completed was the erection of the bridge known as Osborne's Bridge, over the Buffalo River, on the boundary of the Shires of Bright and Oxley, situated approximately 30 miles from the township of Bright. This structure was erected in timber on concrete abutments and piers, its length being 220 feet, consisting of two truss spans of 80 feet each, and two land spans of 30 feet each. The cost was £4,151.

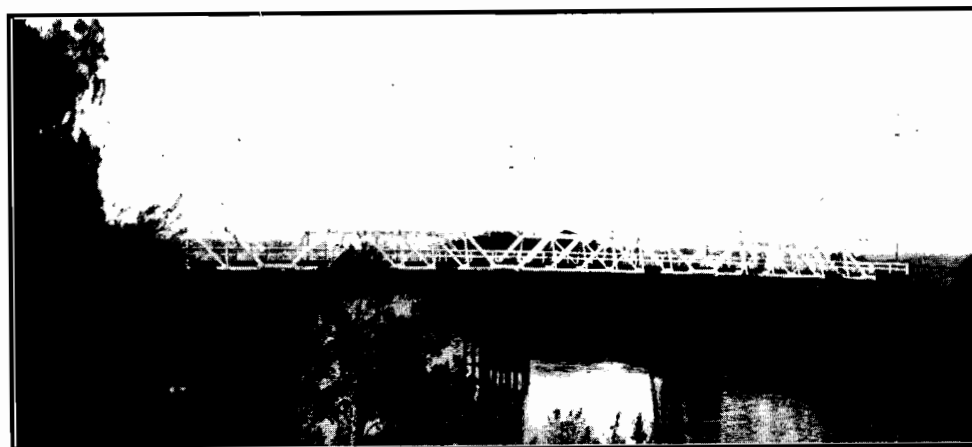


Bridge over Buffalo River, Bright and Oxley Shires.

In the Shire of Bairnsdale, two timber bridges over the Mitchell River, on the Glenaladale-Lindenow Road and the Calulu-Hillside Road were completed at a cost of £5,792 4s. 9d. and £7,715 2s. 9d. respectively. The former structure consists of four truss spans of 60 feet each and two land spans of 10 feet each, a total length of 260 feet, whilst the length of the latter is 430 feet, comprising three truss spans of 60 feet each and ten land spans of 25 feet each.



Bridge over Mitchell River at Calulu, Shire of Bairnsdale.

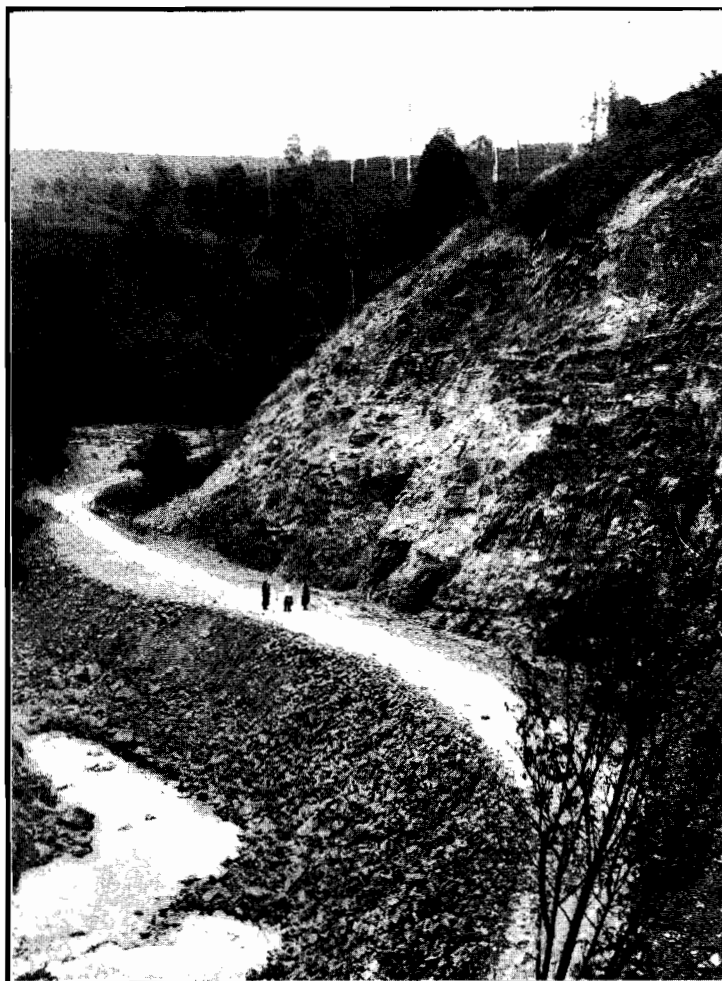


Bridge over Mitchell River at Glenaladale, Shire of Bairnsdale.

A work of considerable importance undertaken directly by the Board is on the Orbost-Delegate Road in the Shire of Orbost. This road forms an important connexion between the town of Orbost, situated at the terminus of the Bairnsdale-Orbost line, and the townships of Delegate and Bombala in New South Wales, which latter town forms the new terminus of the railway from Goulburn.

In the Shire of Morwell, on the Mirboo-Boolarra Road, a section of 12,600 feet was cleared and graded between the two townships. This work, when completed, will form a connecting link between Central and Southern Gippsland, and at the same time, will open up large areas of valuable agricultural country.

In the same district, a work of considerable magnitude was undertaken along the valley of the Morwell River, for the purpose of opening up areas of country suitable for dairying. The accompanying photograph illustrates a difficult section of the road which had to be dealt with.



Morwell River Road, Morwell Shire.

Another work of similar magnitude, and designed to serve identical conditions, is that done on the Traralgon Creek-road, in the Shire of Traralgon, comprising the grading and metalling of approximately $2\frac{1}{2}$ miles.

SOLDIER SETTLEMENTS.

In every instance where the Closer Settlement Board has acquired a large area for subdivision, this Board has co-operated with the local council and the Closer Settlement Board in the provision of at least one arterial road through each area, and by arrangement with the latter Board, these roads have been located before subdivision.

In some of the larger estates purchased, the expenditure has already been considerable. For example :—

	£	s.	d.
Mount Bute road—Hampden and Grenville Shires ..	7,810	18	0
Dreeite-road—Colac Shire	12,507	7	7
Irrewarra-road—Colac Shire	1,645	9	11
Woodlands-road—Minhamite Shire	12,633	17	10
Happy Valley and Barwidgee roads—Bright Shire ..	12,371	17	0
Killingsworth-road—Yea Shire	14,066	7	2
Poowong-road—Korumburra Shire	9,180	4	5

FEDERAL STATE GRANT.

As already mentioned, a sum of £250,000 was made available to the States for road construction works by the Federal Government in July, 1922, on condition that this amount was supplemented by a similar sum to be provided by the States.

Of Victoria's quota of £70,000, together with the State Government's contribution of £70,000, or a total of £140,000, £94,000 was allocated for works carried out under the supervision of the Country Roads Board.

This sum was expended on road works of a permanent nature only in outlying and inaccessible parts of the State, where development had been hindered or rendered almost impracticable through lack of road facilities, and where municipal councils, on account of their insufficient financial resources, had not been able to undertake works of any magnitude, which would have been of benefit to the settlers.

A proportion of the total grant, amounting to £32,100, was allotted to municipal councils for road construction works, subject to the councils contributing 50 per cent. of the allotment made to them and on condition that this Board approved of the class of work proposed to be carried out. In every instance, the work approved by the Board was of a permanent nature only.

APPORTIONMENT OF COSTS.

The expenditure on Permanent Works and Maintenance of main roads during the financial year ended 30th June, 1922, was made under the terms of Section 27 of the *Country Roads Act* 1915, with the result that £2,712 17s. 11d. was charged to municipalities on account of interest on Permanent Works, and £127,910 12s. 2d. in respect of expenditure on Maintenance. The whole of these amounts was received by the Board at the due date.

APPENDICES.

Particulars of Permanent Works carried out on main and developmental roads, as well as maintenance works on main roads, together with Statements of Accounts for the year, as required by the Board's Act, are shown in the Appendices.

I have the honour to be,

Sir,

Your obedient servant,

W. McCORMACK,

Acting Chairman.

F. W. FRICKE, Member.

W. L. DALE, Acting Member.

R. JANSEN, Acting Secretary.

APPENDIX A.
COUNTRY ROADS BOARD FUND, 30TH JUNE, 1923.

Dr.	RECEIPTS.			PAYMENTS.			Cr.
1923	£	s.	d.	£	s.	d.	£
June 30 To Motor Car Act No. 27(2)—							
Registration Fees ..	150,622	7	6				52,766
Licence Fees ..	8,915	18	6				
Fines ..	6,278	7	11				
	165,816	13	11				288,129
Less Refunds and Costs of Administration ..	7,767	11	3				126,245
				158,249	2	8	70,000
Unused Roads and Water Frontages Act No. 1894—							0
Licence Fees ..	21,457	12	0				
Less Refunds and Costs of Administration ..	1,524	7	6				76,805
				19,933	4	6	613
Country Roads Act No. 2635—							
Registration Traction Engines	954	9	0				76,192
Widith of Tyres Administration							13
Fines and Costs ..	84	5	9				18
				1,038	14	9	8
Municipalities' Repayments—							
Permanent Works ..	68,607	8	3				
Maintenance Works ..	123,819	5	7				76,205
				192,426	13	10	19
Appropriation for Maintenance of Main Roads, Act No. 2986 ..				50,000	0	0	
Advance under Special Loan Act No. 3161 ..				70,000	0	0	
Hire of Plant ..	8,590	16	11				
Stores and Materials ..	8,184	1	9				
Sundries ..	6,046	12	0				
				22,821	10	8	
Advances to Loan Account on account of Permanent Works				514,469	6	5	
Expenditure refunded ..							
Advances on account of Expenditure under Federal State Grant No. 1 refunded ..				265,752	0	9	
Balance ..				75,996	14	9	
				26,299	11	10	£882,517
				£882,517	13	9	13
							9
RECONCILIATION STATEMENT.							
	£	s.	d.				£
Balance, as per Country Roads Accounts ..				26,299	11	10	37,770
Deduct Advances on account of Permanent Works				22,211	13	0	12
Transfers outstanding ..				209	4	8	11
				22,420	17	8	39,369
Country Roads Board Fund Balance Credit ..							43,247
				£3,878	14	2	£3,878
							14
							2

APPENDIX A—continued.

BALANCE-SHEET AT 30TH JUNE, 1923.

LIABILITIES.		£	s.	d.	£	s.	d.	ASSETS.		£	s.	d.
Country Roads Board Fund	26,299	11	10	Maintenance Expenditure—	..	134,905	14	2
<i>Deduct</i> Temporary Advance Account	Contributions Payable by Municipalities	..	140	0	5
Permanent Works Expenditure	..	22,211	13	0	Maintenance Unapportioned
Transfers Outstanding	..	209	4	8	22,420	17	8	Permanent Works—	..	135,045	14	7
Contractors' Deposits	3,878	14	2	Contributions Payable by Municipalities
Sundry Liabilities	1,113	12	11	Accounts Outstanding
Sinking Fund	196	12	10	Materials—Stock
Revenue Account Balance	104,555	7	5	Investment Account for Redemption of Loans
	210,889	12	5	Trust Account

	£320,633	19	9		..	£320,633	19	9

APPENDIX A—continued.

COUNTRY ROADS BOARD LOAN ACCOUNT, 30TH JUNE, 1923.

RECEIPTS.		PAYMENTS.		Cr.	
Dr.	£ s. d.	£ s. d.	£ s. d.	£ s. d.	£ s. d.
1922.					
July 1. To Balance	4,538 7 0	1923.			
June 30.		June 30. By Permanent Works (Appendix)	269,170 4 9		
Proceeds of Loans	236,550 3 1	Deduct Refunds	3,124 1 8		266,046 3 1
Transfers	385 16 8	Temporary Advance from Country Roads Board Fund refunded			265,752 0 9
Advances from Country Roads Board Fund	269,170 4 9	Public Account—Advances Account			20,658 8 4
Advances from Public Account	44,616 18 9	Balance			2,804 18 1
	<u>£555,261 10 3</u>				<u>£555,261 10 3</u>

RECONCILIATION.

Temporary Advances from Country Roads Board Fund	£ 22,211 13 0	Accounts and Adjustment in Transit	£ 19,406 14 11
Less Balance, as per Country Roads Board Loan Account	2,804 18 1		
Country Roads Board Loan Account Balance Credit	<u>£19,406 14 11</u>		<u>£19,406 14 11</u>

BALANCE-SHEET, 30TH JUNE, 1923.

LIABILITIES.		ASSETS.	
£ s. d.	£ s. d.	£ s. d.	£ s. d.
Temporary Advances from Country Roads Board Fund	22,211 13 0	Permanent Works Expenditure to date	2,732,155 8 4
Deduct Balance on Loan Account	2,804 18 1	Interest Capitalized on Permanent Works Expenditure, Act No. 2607	20,216 14 5
Interest Accrued on Permanent Works			
Suspense Account			
Loan Securities Issued	2,671,744 4 7		
Deduct Discount	3,631 9 11		
Public Account—Advances Account	2,668,112 14 8		
	44,616 18 9		
	<u>£2,752,372 2 9</u>		<u>£2,752,372 2 9</u>

APPENDIX A—continued.

DEVELOPMENTAL ROADS LOAN ACCOUNT—ACT No. 3255.

Dr.		RECEIPTS.		PAYMENTS.		Cr.	
1923.		£	s. d.	£	s. d.	£	s. d.
June 30. To Proceeds of Loans	..	42,482	7 0	1923.	..	99,405	11 11
" Public Account—Advances Account	..	39,809	14 7	June 30. By Expenditure (Appendix)	..	325	18 5
" Balance	..	16,787	11 11	Less Refunds	..		
		<u>£99,079</u>	<u>13 6</u>				
						<u>99,079</u>	<u>13 6</u>

RECONCILIATION.

	£	s. d.	£	s. d.
Accounts in Transit	20,505	4 0
Treasury Balance	3,718	13 1
Less Adjustment Act 2985	1	1 0
			<u>3,717</u>	<u>12 1</u>
Balance, as per Country Roads Board Accounts	<u>£16,787</u>	<u>11 11</u>

BALANCE-SHEET.

LIABILITIES.		ASSETS.					
	£	s. d.	£	s. d.			
Developmental Roads Loan Account	..	16,787	11 11	Permanent Works Expenditure	..	99,079	13 6
Public Account—Advance Account	..	39,809	14 7	Contribution Payable by Closer Settlement Board	..	3,000	0 0
Proceeds of Loans	..	42,482	7 0				
Suspense Account	..	3,000	0 0				
		<u>£102,079</u>	<u>13 6</u>			<u>£102,079</u>	<u>13 6</u>

Act No. 3255.—No debit has been raised for Interest in respect of Expenditure under the provisions of this Act.

The necessary legislation required by section 5 of the Act having not yet been passed, the amount collectable cannot be determined.

Auditor-General's Certificate.

The Accounts have been audited and compared with the books with which they agree. Reconciliations have also been made with the books of the Treasury.

J. A. NORRIS, Auditor-General.

9th November, 1923.

6th November, 1923.

THOMAS G. BOWDEN, Accountant.

APPENDIX A—continued.

FEDERAL-STATE GRANT.—STATEMENT OF EXPENDITURE TO 30TH JUNE, 1923.

WORKS CARRIED OUT UNDER THE DIRECT SUPERVISION OF THE BOARD.

Shire.			Road.			Amount.					
						£	s.	d.	£	s.	d.
Buln Buln	Fumina	4,870	18	2		
Eltham	Yarra Glen-Kinglake	5,000	0	0		
Morwell	Morwell River	10,000	0	0		
Orbost	Murrungower	10,602	7	2		
Orbost	Prince's Highway	5,000	0	0		
Otway	Apollo Bay-Wye River	5,000	0	0		
Otway	Wild Dog Valley	10,814	16	3		
Oxley	Abbeyards	4,772	10	7		
Oxley	Buffalo River	1,555	19	5		
Oxley	Rose River	270	5	5		
Bright	Buffalo River	2,194	11	6		
Upper Murray	Khancobin	1,206	13	1		
Portland	Prince's Highway	4,764	1	9		
Warragul	Ferndale-Strezlecki	4,000	0	0		
Woorayl and South Gippsland	Turton's Creek	5,118	8	5		
Werribee	Point Cook	57	10	5		
									75,228	2	2
WORKS UNDER SUPERVISION OF THE MUNICIPALITIES.											
Bairnsdale	93	6	8		
Buninyong	140	0	0		
Cranbourne	206	13	4		
Flinders	3,179	5	3		
Grenville	566	18	7		
Heytesbury	599	19	10		
Leigh	28	0	0		
Lilydale	112	9	2		
Romsey	99	5	6		
Tullaroop	206	17	4		
Upper Yarra	337	10	0		
Wannon	97	11	8		
									5,667	17	4
Total	£80,895	19	6	

APPENDIX B.

COUNTRY ROADS BOARD.

LIST OF PLANT PURCHASED AND ON HAND AT 30TH JUNE, 1923.

	£	s.	d.
Road Rollers	1,174	17	6
Steam and Motor Rollers	10,241	4	1
Motor Lorries	5,579	0	0
Motor Cars and Cycles	2,455	8	2
Tar Sprayers	2,136	10	0
Tar Carts and Boilers	2,079	9	9
Crushers	3,640	11	0
Engines	2,669	0	0
Tram Rails and Trucks	4,018	19	6
Boring Plant	89	1	4
Pile Driver	45	0	0
Air Compressors	1,165	4	2
Concrete Mixers	390	0	0
Scarifiers	290	0	0
Graders	923	0	0
Waggon	1,440	10	0
Horses and Harness	905	15	5
Ploughs and Scoops	2,097	11	5
Wharries	199	17	0
Sweepers	97	5	0
Water Carts	271	5	4
Tools, Yard, Plant, &c.	2,893	12	8
Sundries	838	12	8
	£45,641	15	0

APPENDIX C.

COUNTRY ROADS BOARD.

STATEMENT OF APPORTIONMENT OF EXPENDITURE IN CONNEXION WITH CONSTRUCTION AND MAINTENANCE OF MAIN ROADS FOR THE YEAR ENDED 30TH JUNE, 1922.

Name of Municipality.	Permanent Works.		Maintenance.	Name of Municipality.	Permanent Works.		Maintenance.
	Principal.	Interest.	Amount.		Principal.	Interest.	Amount.
Alberton Shire ..	5,515	19 6	110 0 10	1,225	14 2		
Alexandra Shire ..	409	8 10	13 11 3	903	4 4		
Arapiles Shire ..	66	5 9	0 13 8	151	17 0		
Ararat Borough	100	0 10		
Ararat Shire ..	6,381	11 11	127 18 3	1,794	2 0		
Avoca Shire ..	620	13 10	12 7 11	257	3 2		
Avon Shire ..	6	5 9	0 0 3	539	1 0		
			6 5 9*				
Bacchus Marsh Shire	60	16 4	0 8 4	1,841	10 3		
Bairnsdale Shire ..	346	16 3	10 7 10	694	4 1		
Ballan Shire	604	11 3		
Ballarat Shire ..	34	7 2	1 3 3	226	15 0		
Bannockburn Shire	1,474	1 7		
Barrarbool Shire ..	220	14 0	4 18 0	1,150	0 6		
Beechworth Shire	148	8 3	2 0 9	588	7 3		
Belfast Shire ..	303	12 1	11 2 0	1,499	16 9		
Bellarine Shire	1,874	2 3		
Benalla Shire ..	2,489	1 5	47 13 7	606	6 9		
Bendigo City	125	11 9		
Berwick Shire ..	1,702	12 10	31 12 5	696	14 9		
Bet Bet Shire ..	25	9 1	0 1 9	94	10 6		
Birchip Shire ..	819	17 6	..	144	17 2		
Borong Shire ..	843	4 11	13 0 10	396	3 10		
Braybrook Shire	1,585	18 7		
Bright Shire ..	27	9 0	0 1 6	206	1 2		
Broadford Shire	229	6 5		
Broadmeadows Shire ..	137	6 4	4 19 4	1,258	16 9		
Bulla Shire	362	0 11		
Buln Buln Shire ..	1,772	12 9	44 19 8	1,343	15 11		
Bungaree Shire	322	14 10		
Buninyong Shire	671	10 10		
Castlemaine Borough	121	0 7		
Carrum Borough	249	17 1		
Charlton Shire ..	2,004	17 4	33 13 0	323	10 8		
Chiltern Shire ..	470	8 8	11 5 3	379	5 5		
Clunes Borough	87	10 6		
Colac Shire	2,271	5 4		
Corio Shire ..	458	18 9	12 11 0	1,538	9 3		
Cranbourne Shire	2,494	18 3	35 9 11	2,670	1 7		
Creswick Borough	162	18 3		
Creswick Shire	795	12 7		
Dandonong Shire	1,665	2 5		
Daylesford Borough	51	18 1		
Deakin Shire ..	745	17 1	12 2 9	1,189	8 3		
Dimboola Shire ..	2,226	14 1	39 12 1	400	5 6		
Donald Shire ..	1,107	17 3	30 4 9	431	7 9		
Doncaster Shire ..	1	0 0	0 0 7	1,175	10 5		
			1 0 0*				
Dundas Shire ..	20	1 6	0 12 2	2,316	7 3		
Dunmunkle Shire	3,608	12 3	70 3 4	110	14 7		
East Loddon Shire	1,689	1 3	37 9 2	153	11 8		
Eltham Shire ..	124	10 11	3 8 5	635	4 10		
Euroa Shire ..	352	5 0	4 7 3	369	10 9		
Echuca Borough ..	85	12 6	1 17 9		
Ferntree Gully Shire	13	10 6	0 5 2	1,024	15 5		
Flinders Shire ..	1,476	17 4	36 7 0	1,191	13 1		
Frankston and Hastings Shire ..	2,570	19 0	38 19 2	254	15 5		
Footscray City	263	7 10		
Geelong City ..	1,376	16 4	37 12 9		
Gisborne Shire ..	12	5 9	0 6 5	498	8 9		
Glenelg Shire ..	674	18 4	22 3 11	2,137	15 1		
Glenlyon Shire ..	256	17 9	0 6 3	755	16 6		
Goulburn Shire ..	1,003	8 0	5 0 0	425	11 11		
Grenville Shire ..	1	12 1	0 0 8	1,127	18 10		
			1 12 1*				
Geelong West Borough ..	458	18 9	12 10 11		
Hamilton Borough	165	11 0		
Hampden Shire	3,493	6 0		
Carried forward	45,169	12 2	892 8 11	51,406	14 2		
2898.—3							
Brought forward	45,169	12 2	892 8 11	51,406	14 2		
Healesville Shire	1,196	8 1		
H Heidelberg Shire	1,615	7 6		
Heytesbury Shire	7	11 6	0 0 6	951	10 0		
			7 11 6*				
Horsham Borough	395	14 9	10 2 10	112	5 1		
Huntly Shire ..	561	0 9	10 8 10	269	10 2		
Inglewood Borough	70	1 5		
Kara Kara Shire ..	323	2 8	4 10 0	1,098	8 10		
Karkaroc Shire ..	1,041	3 11	23 5 4	961	11 3		
Keilor Shire ..	13	15 11	0 4 9	624	10 5		
Kilmore Shire	100	7 8		
Koroit Borough ..	108	5 11	1 5 1	461	15 10		
Korong Shire ..	516	11 7	9 19 9	416	13 9		
Kowree Shire ..	1,438	19 2	37 16 10	1,250	0 0		
Kyneton Shire	853	19 9		
Korumburra Shire	4,312	17 9	71 11 2	910	0 10		
Kerang ..	8	2 0	8 2 0*		
Lawloit Shire ..	3,364	14 11	48 19 7	850	5 11		
Leigh Shire ..	1	15 11	0 1 4	773	17 9		
			1 15 11*				
Lexton Shire ..	548	11 0	20 16 0	458	2 5		
Lilydale Shire ..	6,234	7 0	98 0 0	1,789	7 10		
Lowan Shire ..	977	12 4	23 6 5	700	12 7		
Maffra Shire ..	1,530	14 6	18 13 9	815	11 9		
Maldon Shire	371	0 4		
Mansfield Shire ..	666	19 9	16 8 5	808	7 0		
Board's Maintenance	1,248	12 11		
Marong Shire ..	45	9 6	1 12 0	892	12 0		
Maryborough Borough	50	15 2		
Melton Shire	528	18 11		
Mentone Mordialloc Borough	338	5 0		
Metcalfe Shire	615	2 11		
Mildura Shire ..	784	0 0	17 11 6	134	15 7		
Minhamite Shire	1,125	5 4		
Mirboo Shire ..	825	5 8	19 19 3	250	15 0		
Moorabbin Shire	628	2 5		
Mornington Shire	2,327	10 3	58 9 7	133	4 10		
Mortlake Shire	736	12 0		
Morwell Shire ..	3,410	18 1	57 11 3	632	11 1		
Mount Rouse Shire	1,187	0 11		
Mulgrave Shire ..	34	10 4	1 3 9	2,237	14 0		
Melvor Shire	731	15 8		
Newtown and Chiltern Borough ..	458	18 9	12 11 0		
Narracan Shire ..	2,001	12 7	35 17 11	735	14 1		
Board's Maintenance	131	0 2		
Newham and Woodend Shire	156	16 4		
Newstead and Mount Alexander Shire ..	6	10 0	0 0 6	458	15 1		
			6 10 0*				
Numurkah Shire ..	1,356	9 1	19 7 4	989	15 4		
Nunawading Shire	324	19 4		
Oakleigh Borough	750	0 0	45 0 0	513	3 8		
Omoo Shire ..	4,087	6 0	77 2 8	1,483	8 3		
Board's Maintenance	59	5 7		
Orbost Shire ..	7,307	6 2	137 4 1	900	12 11		
Board's Maintenance	2,430	8 10		
Otway Shire ..	5,743	3 8	68 11 7	758	0 3		
Oxley Shire ..	484	10 11	12 5 2	168	11 2		
Phillip Island and Woolamai Shire	776	10 1	10 8 2	796	4 11		
Port Fairy Borough	36	6 7	1 0 7	387	10 0		
Portland Shire ..	82	0 8	0 12 0	489	11 6		
Preston Town	779	16 8		
Pyalong Shire	119	3 3		
Queenscliff Borough	250	2 8		
Carried forward	97,740	1 10	1,888 7 3	92,271	14 1		

STATEMENT OF APPORTIONMENT OF EXPENDITURE IN CONNEXION WITH CONSTRUCTION AND MAINTENANCE OF
MAIN ROADS, ETC.—*continued.*

Name of Municipality.	Permanent Works.		Maintenance.	Name of Municipality.	Permanent Works.		Maintenance.
	Principal.	Interest.	Amount.		Principal.	Interest.	Amount.
	£ s. d.	£ s. d.	£ s. d.		£ s. d.	£ s. d.	£ s. d.
Brought forward	97,740 1 10	1,888 7 3	92,271 14 1	Brought forward	112,736 5 8	2,216 12 5	105,106 10 6
Ripon Shire ..	321 3 4	7 3 4	1,115 11 8	Tullaroop Shire ..	105 0 6	1 1 11	372 9 9
Rochester Shire ..	39 19 0	1 2 11	819 3 8	Tungamah Shire ..	2,694 10 0	43 5 4	280 2 11
Rodney Shire ..	1,494 13 4	15 16 5	1,076 0 9	Upper Murray Shire	1,442 5 9	18 8 8	259 17 4
Romsey Shire ..	666 5 11	17 14 0	1,079 0 10	Upper Yarra Shire	34 3 1	1 4 2	367 10 6
Rosedale Shire ..	434 8 8	9 10 3	568 9 1	Board's Maintenance	162 13 6
Rutherglen Shire	282 19 3	9 3 8	778 7 9	Violet Town Shire	739 6 10	12 9 4	254 16 7
Sale Borough ..	3 2 6	0 2 6	125 1 4	Walpou Shire ..	829 3 3	6 11 2	690 10 10
		3 2 6*		Wangaratta Shire	3,768 11 0	71 0 4	530 7 9
Seymour Shire ..	550 7 1	18 7 5	253 7 3	Wannon Shire ..	12 19 2	0 8 10	1,551 15 1
Shepparton Shire	19 19 1	0 11 11	936 3 8	Waranga Shire ..	27 8 0	0 0 11	811 7 2
St. Arnaud Borough	208 11 2	Warragul Shire ..	218 12 10	4 6 9	1,655 5 7
South Barwon Shire	15 1 0	0 11 2	874 19 11	Warrnambool Shire	6,512 7 3
South Gippsland	Werribee Shire	1,730 1 0
Shire ..	2,974 14 6	63 17 1	594 9 9	Whittlesea Shire ..	1,006 17 10	22 15 6	1,446 0 1
Stawell Borough	76 6 7	Wimmera Shire ..	3,435 2 5	49 4 2	323 9 7
Stawoll Shire ..	35 3 3	1 8 8	1,257 5 0	Winchelsea Shire..	1,371 14 6	18 19 6	1,942 15 0
Strathfieldsaye Shire	9 4 3	0 3 6	675 5 4	Wodonga Shire ..	1,747 9 5	42 18 10	653 5 6
		9 4 3*		Wonthaggi Bor-	300 15 4
Swan Hill Shire ..	2,905 6 7	61 16 3	417 12 4	ough	524 10 2
Talbot Shire ..	93 6 10	1 0 4	133 4 4	Woorayl Shire ..	6,762 0 0	135 8 10	588 0 0
Tambo Shire ..	2,260 8 7	58 12 4	828 7 6	Wycheproof Shire	721 14 11	12 15 10	..
Towong Shire ..	347 4 7	10 4 3	650 9 4	Yackandandah	646 3 8
Board's Maintenance	59 5 7	Shire ..	3,061 16 1	52 9 5	136 5 11
Traralgon Shire ..	2,542 16 1	38 12 5	307 13 7	Yarrowonga Shire	1,063 11 2
				Yea Shire ..	2 16 0	2 16 0*	..
Carried forward	112,736 5 8	2,216 12 5	105,106 10 6	TOTALS ..	140,717 17 3	2,712 17 11	127,910 12 2

* Liability liquidated.

APPENDIX D.

COUNTRY ROADS BOARD.

STATEMENT OF EXPENDITURE IN CONNEXION WITH CONSTRUCTION AND MAINTENANCE OF MAIN ROADS FOR THE YEAR ENDED 30th JUNE, 1923.

Municipality and Road.	Permanent Works.		Maintenance.	
	Amount.	Total.	Amount.	Total.
	£ s. d.	£ s. d.	£ s. d.	£ s. d.
ALBERTON SHIRE—				
Balook-Traralgon Road	111 9 4	
Boolarra-Welshpool Road	2,649 8 11		41 10 4	
Carrajung-Gormandale Road	1,786 16 6		576 13 11	
Foster-Yarram Road	6,113 2 2		236 17 7	
Sale-Yarram Road	43 11 3		687 19 6	
Yarram-Boolarra Road	6,184 11 0		598 5 9	
Yarram-Port Albert Road		741 19 11	
		16,777 9 10		2,994 16 4
ALBERTON AND MORWELL SHIRES (Joint Works)—				
Boolarra-Welshpool Road		8 5 0	
Yarram-Boolarra Road		11 17 1	
				20 2 1
ALEXANDRA SHIRE—				
Cathkin-Mansfield Road	2 15 4		228 10 7	
Healesville-Alexandra Road	1,334 14 10		1,060 13 6	
Upper Goulburn Road	7 4 0		858 12 10	
Yarck Road		83 17 8	
		1,344 14 2		2,231 14 7
ARAPILES SHIRE—				
Horsham-Hamilton Road	4 1 8		227 11 2	
Horsham-Natimuk-Edenhope Road	2,058 18 2		50 0 11	
		2,062 19 10		277 12 1
ARARAT BOROUGH—				
Ballarat-Stawell Road		46 4 11	
				46 4 11
ARARAT SHIRE—				
Ararat-Elmhurst Road		315 6 4	
Ararat-Warrnambool Road	14 15 7		1,126 13 0	
Ballarat-Hamilton Road	1,504 14 6		1,827 6 8	
Ballarat-Stawell Road		1,030 0 9	
Maroona-Glenthompson Road		108 11 1	
		1,519 10 1		4,407 17 10
AVOCA SHIRE—				
Ararat Road		34 10 3	
Ballarat-St. Arnaud Road		331 16 10	
Bealiba Road	7 0 0		265 5 3	
Landsborough Road		31 11 0	
Maryborough Road		28 3 8	
Navarre Road	
Natte Yallock Road		0 12 0	
		7 0 0		691 19 0
AVOCA AND KARA KARA SHIRES (Joint Works)—				
Navarre Road	398 9 2		..	
		398 9 2		
AVON SHIRE—				
Dargo Road		434 14 4	
Maffra-Sale Road		225 9 0	
Prince's Highway	83 7 3		882 2 3	
		83 7 3		1,542 5 7
BACCHUS MARSH SHIRE—				
Ballarat Road		2,240 19 8	
Geelong-Bacchus Marsh Road	364 15 4		432 7 6	
Gisborne Road		1,262 11 0	
		364 15 4		3,935 18 2
BAIRNSDALE SHIRE—				
Bairnsdale-Bruthen Road		518 19 10	
Bullumwaal-Taberabbera Road	1,101 0 6		507 0 3	
Prince's Highway	0 10 0		2,106 7 4	
		1,101 10 6		3,132 7 5
BAIRNSDALE AND TAMBO SHIRES (Joint Works)—				
Prince's Highway		2 18 6	
		..		2 18 6
BALLAN SHIRE—				
Ballarat Road		1,364 17 1	
Daylesford Road		339 18 4	
Gordons-Meredith Road		491 0 7	
Mount Wallace Road	1,426 8 9		230 17 2	
		1,426 8 9		2,426 13 2
BALLARAT SHIRE—				
Ararat Road		697 19 4	
Ballarat-Creswick Road		392 2 6	
Ballarat-Lexton Road		923 8 2	
Maryborough-Ballarat Road		514 11 9	
		..		2,528 1 9
Carried forward		25,086 4 11		24,238 11 5

STATEMENT OF EXPENDITURE IN CONNEXION WITH CONSTRUCTION AND MAINTENANCE, ETC.—*continued.*

Municipality and Road.	Permanent Works.		Maintenance.	
	Amount.	Total.	Amount.	Total.
	£ s. d.	£ s. d.	£ s. d.	£ s. d.
Brought forward	25,086 4 11	..	24,238 11 5
BANNOCKBURN SHIRE—				
Geelong-Ballarad Road		529 8 9	
Gordons-Meredith Road		21 17 10	
Inverleigh Road		1,483 18 1	
Shelford-Bannockburn		140 15 2	
				2,175 19 10
BANNOCKBURN AND BUNINYONG SHIRES (Joint Works)—				
Geelong-Ballarad Road		0 16 11	
				0 16 11
BARRARBOOL SHIRE—				
Anglesea Road	17 16 6		621 7 3	
Hendy Main Road	0 12 6		299 19 7	
Prince's Highway		498 5 11	
		18 9 0		1,419 12 9
BEECHWORTH SHIRE—				
Beechworth Road	435 5 10		351 13 1	
Bright Road	1,477 4 0		36 19 5	
Everton-Myrtleford Road		392 16 8	
Stanley Road	1,356 1 11		268 12 2	
		3,268 11 9		1,050 1 4
BEECHWORTH AND WANGARATTA SHIRES (Joint Works)—				
Beechworth Road		74 14 1	
				74 14 1
BELFAST SHIRE—				
Hamilton Road		862 4 9	
Penshurst Road		505 15 8	
Prince's Highway	21 9 10		1,925 14 2	
		21 9 10		3,293 14 7
BELLARINE SHIRE—				
Geelong-Portarlington Road		1,983 2 5	
Geelong-Queenscliff Road		2,914 6 2	
				4,897 8 7
BENALLA SHIRE—				
Goorambat Road	20 7 8		485 0 1	
Goorambat-Thoona Road		5 17 0	
Greta Road		11 14 2	
Lima Road	17 18 0		30 17 9	
Sydney Road	1,445 1 1		546 4 7	
Tatong Road	43 19 8		127 12 3	
		1,527 6 5		1,207 5 10
BERWICK SHIRE—				
Gembrook Road	1,879 7 6		33 5 11	
Gembrook-Beenak Road	2 8 0		6 5 5	
Hallam-Emerald Road		13 11 5	
Prince's Highway	3,343 13 2		4,153 8 1	
Woori Yallock-Pakenham-Koo-wee-rup Road	5,904 16 4		170 11 3	
		11,130 5 0		4,377 2 1
BET BET SHIRE—				
Avoca-Bealiba Road	8 12 8		8 8 0	
Betley Road		324 4 11	
		8 12 8		332 12 11
BIRCHIP SHIRE—				
Beulah-Birchip-Wycheproof Road	949 17 9		40 18 3	
Donald-Birchip-Sea Lake Road	3,843 15 3		191 2 3	
		4,793 13 0		232 0 6
BIRCHIP AND WYCHEPROOF SHIRES (Joint Works)—				
Beulah-Birchip-Wycheproof-Road		0 9 5	
				0 9 5
BORUNG SHIRE—				
Birchip Road		41 5 1	
Dimboola Road	0 0 9		25 3 11	
Hopetoun Road	8 8 1		137 17 0	
Minyip Road	3,125 11 7		186 7 8	
Rainbow Road	1,610 13 11		261 4 0	
		4,744 14 4		651 17 8
BRAYBROOK SHIRE—				
Ballarat Road		2,335 18 2	
Prince's Highway		444 17 9	
				2,780 15 11
BRIGHT SHIRE—				
Bright Road		148 8 7	
Harrierville Road		115 12 5	
Kiewa Valley Road	
				264 1 0
BRIGHT AND OMEO SHIRES (Joint Works)—				
Omeo-Bright Road		1,140 0 5	
				1,140 0 5
BROADFORD SHIRE—				
Sydney Road		70 15 11	
				70 15 11
BROADMEADOWS SHIRE—				
Sydney Road		2,613 18 11	
				2,613 18 11
BROADMEADOWS AND KEILOR SHIRES (Joint Works)—				
Lancefield Road		262 4 6	
				262 4 6
Carried forward	50,599 6 11	—	51,084 4 7

STATEMENT OF EXPENDITURE IN CONNEXION WITH CONSTRUCTION AND MAINTENANCE, ETC.—*continued.*

Municipality and Road.	Permanent Works.		Maintenance.	
	Amount.	Total.	Amount.	Total.
	£ s. d.	£ s. d.	£ s. d.	£ s. d.
Brought forward	50,599 6 11	..	51,084 4 7
BULLA SHIRE—				
Melbourne-Lancefield Road		1,685 5 3	
Sunbury Road		155 12 10	
				1,840 18 1
BULLA AND KEILOR SHIRES (Joint Works)—				
Melbourne-Lancefield Road		3 15 9	
				3 15 9
BULN BULN SHIRE—				
Bloomfield Road		18 19 11	
Loch Valley Road		90 3 8	
Magpie-Duggan Road	0 0 10	78 5 0	
Main Neerim "A"	70 11 6	467 4 7	
Main Neerim "B" Road	615 5 9	274 16 2	
Main Neerim "C" Road	286 3 5	
Main South Road	6 18 3	318 1 1	
Neerim East Road	8 3 3	81 9 5	
Prince's Highway	2,023 17 5	
Westernport Road	332 18 1	7 11 5	
		1,033 17 8		3,646 12 1
BUNGAREE SHIRE—				
Ballarat Road	532 0 1	
Ballarat-Creswick Road	9 2 0	259 3 10	
Daylesford-Ballarat Road	428 6 8	
		9 2 0		1,219 10 7
BUNINYONG SHIRE—				
Ballarat Road	1,801 10 9	366 19 5	
Elaine-Mt. Mercer Road	10 7 5	
Geelong-Ballarat Road	1,333 12 11	1,554 7 2	
		3,135 3 8		4,931 14 0
CARRUM BOROUGH—				
Point Nepean Road	2,450 10 8	
				2,450 10 8
CASTLEMAINE BOROUGH—				
Melbourne-Bendigo Road	70 1 3	
				70 1 3
CHARLTON SHIRE—				
Bendigo Road	145 0 0	731 10 5	
Donald Road	440 18 10	86 12 2	
St. Arnaud Road	585 0 0	46 8 8	
Wycheproof Road	2,378 8 10	20 5 6	
		3,549 7 8		884 16 9
CHILTERN SHIRE—				
Chiltern-Howlong Road	193 7 3	
Rutherglen-Wodonga Road	145 16 8	
Sydney Road	38 18 6	461 10 5	
		38 18 6		800 14 4
CLUNES BOROUGH—				
Maryborough-Ballarat Road	52 0 0	
				52 0 0
COLAC SHIRE—				
Colac-Ballarat Road	1,147 8 6	
Prince's Highway	2,062 17 1	
				3,210 5 7
CORIO SHIRE—				
Ballarat Road	292 9 4	
Geelong-Bacchus Marsh Road	483 17 11	
Prince's Highway	696 13 11	1,013 7 8	
		696 13 11		1,789 14 11
CRANBOURNE SHIRE—				
Koo-wee-rup-Pakenham Road	1,120 1 2	232 18 11	
Lang Lang-Nyora Road	1,166 9 0	18 0 1	
Main Coast Road	405 15 10	2,668 14 7	
Westernport Road	215 10 0	83 3 0	
		2,907 16 0		3,002 16 7
CRESWICK BOROUGH—				
Castlemaine-Ballarat Road	571 12 2	
				571 12 2
CRESWICK SHIRE—				
Castlemaine-Ballarat Road	794 10 8	
Daylesford-Ballarat Road	618 17 1	
				1,413 7 9
DANDENONG SHIRE—				
Cheltenham Road	1,504 7 3	
Prince's Highway	3,293 2 2	
				4,797 9 5
DANDENONG AND MULGRAVE SHIRES (Joint Works)—				
Prince's Highway	32 16 8	
				32 16 8
DAYLESFORD BOROUGH—				
Ballan Road	55 6 2	
Daylesford-Hepburn Road	177 14 10	
				233 1 0
Carried forward	61,970 6 4	..	79,036 2 2

STATEMENT OF EXPENDITURE IN CONNEXION WITH CONSTRUCTION AND MAINTENANCE, ETC.—*continued.*

Municipality and Road.	Permanent Works.				Maintenance.									
	Amount.			Total.	Amount.			Total.						
	£	s.	d.	£	s.	d.	£	s.	d.					
Brought forward	61,970	6	4	..	79,036	2	2				
DEAKIN SHIRE—														
Echuca-Cornella Road	19	3	2					
Echuca-Picola Road	7	3	8					
Kyabram-Nathalia Road	9	8	9	564	15	4					
Kyabram-Tongala Road	0	9	6	527	5	3					
Rochester-Kyabram Road	600	0	11					
				9	18	3				1,718	8	4		
DEAKIN AND NUMURKAH SHIRES (Joint Works)—														
Kyabram-Nathalia Road	51	10	3			51	10	3
DEAKIN AND RODNEY SHIRES (Joint Works)—														
Kyabram-Tongala Road	56	4	4	7	11	6					
Rochester-Kyabram Road	7	18	7					
				56	4	4						15	10	1
DIMBOOLA SHIRE—														
Hopetoun-Rainbow Road	0	3	10					
Horsham Road	12	13	6					
Nhill Road	2,589	15	5	1,246	19	11					
Rainbow Road	826	9	4	53	16	1					
Rainbow Rises	218	6	6	66	12	7					
Warracknabeal Road	52	12	6	445	12	10					
							3,687	3	9			1,825	18	9
DONALD SHIRE—														
Donald-Charlton Road	1,118	12	0	216	19	9					
Donald-Minyip Road	5	2	5					
St. Arnaud-Birchip Road	860	8	3	213	11	8					
							1,979	0	3			435	13	10
DONALD AND CHARLTON SHIRES (Joint Works)—														
Donald-Charlton Road	174	0	0					
												174	0	0
DONCASTER SHIRE—														
Doncaster Road	111	17	1					
Heidelberg-Warrandyte Road	823	2	8					
Warrandyte-Ringwood Road	121	16	1					
												1,056	15	10
DUNDAS SHIRE—														
Hamilton-Dunkeld Road	306	5	9	349	0	4					
Hamilton-Horsham Road	0	3	2	775	8	2					
Hamilton-Mt. Gambier Road	778	17	4					
Hamilton-Port Fairy Road	0	5	0	1,065	4	5					
Hamilton-Portland Road	224	0	0	469	15	0					
Hamilton-Warrnambool Road	306	11	2					
							530	13	11			3,744	16	5
DUNMUNKLE SHIRE—														
Minyip-Donald Road	1,540	1	0	125	1	11					
Rupanyup-Murtoa Road	1,043	3	5	118	6	1					
Stawell-Warracknabeal Road	2,190	0	7	610	13	0					
							4,773	5	0			854	1	0
EAST LODDON SHIRE—														
Dingee Road	3,802	13	0	33	5	8					
Mitiamo Road	38	8	7					
Prairie Road	537	12	0	239	8	6					
Prairie-Borong Road	137	19	7					
							4,340	5	0			499	2	4
ECHUCA BOROUGH AND DEAKIN SHIRES (Joint Works)—														
Echuca-Cornella Road	8	9	6					
							8	9	6					
ELTHAM SHIRE—														
Eltham-Yarra Glen Road	992	11	5					
Hurstbridge-Kinglake Road	5	0	0	667	8	11					
Whittlesea-Kinglake Road					
Yarra Glen-Kinglake East Road	137	13	7					
							5	0	0			1,797	13	11
EUROA SHIRE—														
Arcadia Road	0	16	0	188	3	3					
Euroa-Arcadia Road	63	7	10					
Euroa-Mansfield Road	4	13	10	49	12	7					
Euroa-Strathbogie Road	26	3	3	273	13	10					
Sydney Road	2,351	15	9	144	0	2					
							2,383	8	10			718	17	8
FERNTREE GULLY SHIRE—														
Main Ferntree Gully Road	1,366	6	7					
Monbulk Road	941	2	0	516	16	11					
Olinda Road	200	8	10					
							941	2	0			2,083	12	4
FLINDERS SHIRE—														
Dromana Road	407	7	9					
Dromana-Sorrento Road	2,553	10	2					
Hastings-Flinders Road	60	15	6	607	17	3					
Mornington-Flinders Road	1,734	11	2	301	17	7					
							1,795	6	8			3,870	12	9
FOOTSCRAY CITY—														
Prince's Highway	673	11	10					
												673	11	10
Carried forward	82,480	3	10			98,556	7	6

STATEMENT OF EXPENDITURE IN CONNEXION WITH CONSTRUCTION AND MAINTENANCE, ETC.—*continued.*

Municipality and Road.	Permanent Works.				Maintenance.			
	Amount.		Total.		Amount.		Total.	
	£	s. d.	£	s. d.	£	s. d.	£	s. d.
Brought forward	82,480	3 10	98,556	7 6
FRANKSTON AND HASTINGS SHIRE—								
Frankston-Flinders Road	1,172	17 11			72	14 6		
Point Nepean Road	5,351	0 9			337	9 11		
			6,523	18 8			410	4 5
GISBORNE SHIRE—								
Bacchus Marsh Road	160	0 0			159	5 3		
Gisborne Station Road			106	18 11		
Melbourne-Bendigo Road	1,892	7 10			234	1 1		
			2,052	7 10			500	5 3
GISBORNE AND BULLA SHIRES (Joint Works)—								
Melbourne-Bendigo Road			58	19 2		
							58	19 2
GISBORNE AND NEWHAM AND WOODEND SHIRES (Joint Works)—								
Melbourne-Bendigo Road			10	18 4		
							10	18 4
GLENELG SHIRE—								
Coleraine-Casterton Road	273	7 6			33	8 0		
Dergholm Road			907	5 4		
Mount Gambier Road	3,360	7 10			547	14 5		
Wando Vale Road			128	9 3		
			3,633	15 4			1,616	17 0
GLENLYON SHIRE—								
Ballan Road			104	7 4		
Ballarat Road			25	18 3		
Castlemaine-Daylesford Road	2,755	6 2			579	15 8		
Hepburn-Daylesford Road			88	0 11		
Malmsbury-Daylesford Road			724	1 3		
			2,755	6 2			1,522	3 5
GOULBURN SHIRE—								
Goulburn Valley Road	1,909	6 11			720	8 2		
Murchison-Shepparton Road			28	1 0		
Sydney Road			336	6 10		
Vickers Road			4	0 0		
			1,909	6 11			1,088	16 0
GRENVILLE SHIRE—								
Ballarat-Hamilton Road			596	12 5		
Cressy Road			437	10 10		
Lismore Road			238	2 4		
Pitfield Road			202	13 2		
							1,474	18 9
HAMILTON BOROUGH—								
Ararat Road			44	4 9		
Coleraine Road			366	7 6		
Port Fairy Road			111	18 6		
Portland Road			1	3 3		
							523	14 0
HAMPDEN SHIRE—								
Camperdown-Ballarat Road			1,970	5 0		
Lismore-Cressy Road			120	18 1		
Prince's Highway	18	9 8			2,244	3 1		
Terang-Mortlake Road			961	8 5		
			18	9 8			5,296	14 7
HEALESVILLE SHIRE—								
Healesville-Alexandra Road			3,054	4 11		
Healesville-Woori Yallock Road			53	16 10		
Marysville Road			183	17 0		
							3,291	18 9
HEALESVILLE AND LILYDALE SHIRES (Joint Works)—								
Healesville-Alexandra Road			24	1 5		
							24	1 5
HEIDELBERG SHIRE—								
Greensborough-Hurst Bridge Road			1,189	12 5		
Heidelberg-Warrandyte Road			11	13 1		
Main Heidelberg—Eltham Road			5,219	14 1		
Main Whittlesea Road			515	8 6		
							6,936	8 1
HEYTESBURY SHIRE—								
Camperdown-Cobden Road			481	15 10		
Cobden-Port Campbell-Princetown Road	726	0 1			842	19 0		
Prince's Highway			360	0 5		
			726	0 1			1,684	15 3
HORSHAM BOROUGH—								
Dimboola-Horsham Road	24	9 2			7	6 11		
Dooen Road			321	3 0		
Hamilton Road			76	3 4		
			24	9 2			404	13 3
HUNTLY SHIRE—								
Bendigo-Echuca Road	9	17 9			407	5 8		
Elmore-Heathcote Road		
			9	17 9			407	5 8
HUNTLY AND WARANGA SHIRES (Joint Works)—								
Heathcote-Elmore Road	13	1 6				
			13	1 6				
Carried forward	100,146	16 11	123,800	0 10

STATEMENT OF EXPENDITURE IN CONNEXION WITH CONSTRUCTION AND MAINTENANCE, ETC.—continued.

Municipality and Road.	Permanent Works.		Maintenance.	
	Amount.	Total.	Amount.	Total.
	£ s. d.	£ s. d.	£ s. d.	£ s. d.
Brought forward	100,146 16 11	..	123,800 0 10
INGLEWOOD BOROUGH— Bendigo-Charlton Road		130 15 2	130 15 2
KARA KARA SHIRE— Avoca-St. Arnaud Road Charlton Road Navarre Road St. Arnaud-Donald Road		403 9 10 216 17 7 552 6 8 102 14 9	1,275 8 10
KARA KARA, CHARLTON, AND KORONG SHIRES (Joint Works)— Charlton Road		13 16 9	13 16 9
KARKAROO SHIRE— Hopetoun-Rainbow Road Hopetoun-Warracknabeal Road Hopetoun-Woomelang-Sea Lake Road Rainbow-Beulah-Birchip Road	578 12 5 1,161 18 9 1,270 1 8 139 10 4		577 10 9 607 17 2 910 6 6 1,141 5 11	3,237 0 4
KEILOR SHIRE— Melbourne-Bendigo Road	11 9 4		836 7 8	836 7 8
KERANG SHIRE— Koondrook Road	3,233 5 9		..	
KILMORE SHIRE— Heathcote Road Lancefield-Kilmore Road Sydney Road		136 16 0 26 8 10 28 17 9	192 2 7
KOROIT BOROUGH— Koroit-Warrnambool Road	55 12 3		717 0 11	717 0 11
KOROIT BOROUGH AND BELFAST SHIRES (Joint Works)— Koroit-Warrnambool Road		61 2 0	61 2 0
KOROIT BOROUGH AND WARRNAMBOOL SHIRES (Joint Works)— Koroit-Warrnambool Road		291 4 6	291 4 6
KORUMBURRA SHIRE— Bena-Poowong Road Korumburra-Drouin Road Korumburra-Leongatha Road Korumburra-Warragul Road Korumburra-Wonthaggi Road Lang Lang-Nyora Road Loch-Wonthaggi Road Nyora-Poowong Road Wild Dog Valley Road 5 14 0 .. 1,784 12 10 144 9 5		200 15 6 254 4 1 165 18 3 634 5 2 665 18 9 29 14 8 127 13 1 332 9 2 ..	2,410 18 8
KORONG SHIRE— Borong-Hurstwood Road Charlton-Bendigo Road Serpentine Road	625 10 6 444 13 7 13 14 4		6 15 0 478 13 0 26 15 0	512 3 0
KOWREE SHIRE— Booroopki Road Edenhope-Goroke Road Hamilton-Edenhope-Apsley Road Horsham-Hamilton Road	2 16 8 349 8 9 .. 3 8 0		312 9 11 702 5 6 667 0 5 ..	1,681 15 10
KYNETON SHIRE— Daylesford Road Melbourne-Bendigo Road Redesdale Road Trentham Road Tylden-Woodend Road		0 15 4 552 13 1 176 0 2 368 5 2 54 12 1	1,152 5 10
LAWLOIT SHIRE— Broughton Road Nhill-Kaniva-Border Road South Lillimur Road Yearinga Road	419 2 11 5,824 19 5 212 9 0 ..		235 2 0 1,053 7 9 208 17 10 249 11 5	1,746 19 0
LEIGH SHIRE— Cressy-Rokewood Road Inverleigh-Shelford Road Rokewood-Shelford Road Shelford-Bannockburn Road Werneth Road	1,842 12 3 861 6 3		86 15 6 161 9 10 718 10 3 372 13 8 ..	1,339 9 3
Carried forward	119,132 5 4	..	139,407 11 2

STATEMENT OF EXPENDITURE IN CONNEXION WITH CONSTRUCTION AND MAINTENANCE, ETC.—*continued.*

Municipality and Road.	Permanent Works.				Maintenance.			
	Amount.			Total.	Amount.			Total.
	£	s.	d.	£ s. d.	£	s.	d.	£ s. d.
Brought forward	119,132 5 4	139,407 11 2
LEIGH AND COLAC SHIRES (Joint Works)— Cressy—Shelford Road	57 1 2	..	57 1 2
LEXTON SHIRE— Avoca—Ararat Road Avoca—Ballarat Road	147 1 4	..	306 19 10 779 12 6	..	1,086 12 4
LILYDALE SHIRE— Evelyn—Lilydale Road Main Healesville Road Main Warburton Road Monbulk Road Mount Dandenong Road Ringwood—Warrandyte Road Yarra Glen Road	5 0 0 20 12 6 949 17 4 1,630 4 9 7,409 0 10 1,531 1 1 102 19 8	..	2,940 18 3 307 16 4 453 12 4 248 8 6 149 3 0 77 16 6	..	4,177 14 11
LOWAN SHIRE— Dimboola—Kaniva Road Goroke Road Lorquon West Road Yanac Road	3,045 19 1 .. 1,723 19 9 2,068 17 2	..	1,751 19 7 279 5 9 489 8 0 1,861 17 6	..	4,382 10 10
MAFFRA SHIRE— Bushy Park—Valencia Creek Road Briagolong—Dargo Road Licola Road Maffra—Sale Road Tinamba—Boisdale Road Tinamba—Newry Road 146 0 10 .. 2 9 6 52 19 6	..	123 9 4 0 12 0 433 14 6 .. 202 13 1 9 9 11	..	769 18 10
MALDON SHIRE— Baringhup Road Castlemaine—Maldon Road Castlemaine—Newstead Road Maldon—Eddington Road Melbourne—Bendigo Road Newstead Road	208 10 0 282 16 7 0 5 6 16 3 5 0 1 1 79 14 8	..	587 11 3
MALDON, MARONG, AND METCALFE SHIRES AND BENDIGO CITY (Joint Works)— Melbourne—Bendigo Road	696 1 2	..	696 1 2
MANSFIELD SHIRE— Euroa—Merton Road Jamieson Road Mansfield Road Mansfield—Tolmie Road Mansfield—Wood's Point Road 546 2 0 3,960 19 3	83 3 5 721 16 8 440 5 8 5 11 2 Sh. 280 16 4 Bd. 2,463 1 8	..	3,994 14 11
MARONG SHIRE— Bendigo—Bridgewater Road Bendigo—Eddington Road Bendigo—Serpentine Road Melbourne—Bendigo Road 82 2 0	518 4 10 318 19 6 141 1 2 437 17 11	..	1,416 3 5
MARYBOROUGH BOROUGH— Avoca Road Ballarat Road Castlemaine Road Eddington Road	22 10 0 8 1 3 36 8 9 7 17 0	..	74 17 0
MELTON SHIRE— Ballarat Road Melbourne—Bendigo Road Toolern Road	687 5 10 152 13 0 756 1 3	..	1,596 0 1
MELTON AND BULLA SHIRES (Joint Works)— Melbourne—Bendigo Road	262 15 8	..	262 15 8
METCALFE SHIRE— Kyneton—Redesdale Road Melbourne—Bendigo Road	49 8 0 241 4 9	..	290 12 9
MILDURA TOWN— Deakin Avenue Punt Road	1,414 4 7 7 13 6	..	7 13 6
MILDURA SHIRE— Deakin Avenue Irymple Road Melbourne Road Wentworth Road	115 16 4 .. 92 6 8 2,661 13 8 2,579 18 4 6 0 0 114 4 9	..	2,700 3 1
Carried forward	146,841 13 2	161,508 2 1

STATEMENT OF EXPENDITURE IN CONNEXION WITH CONSTRUCTION AND MAINTENANCE, ETC.—*continued.*

Municipality and Road.	Permanent Works.				Maintenance.			
	Amount.			Total.	Amount.			Total.
	£	s.	d.	£ s. d.	£	s.	d.	£ s. d.
Brought forward	146,841 13 2	161,508 2 1
MINHAMITE SHIRE—								
Hamilton-McArthur-Port Fairy Road	1,588	0	1	
Warnambool-Hawkesdale-Penshurst Road	1,235	13	1	2,823 13 2
MIRBOO SHIRE—								
Foster-Boolara Road	
Mirboo-Allambee Road	675 12 9	287	12	0	
Mirboo South Road	296 11 6	1,045	16	3	1,333 8 3
				972 4 3				
MOORABBIN SHIRE—								
Centre Dandenong Road	247	17	6	
Point Nepean Road	2,864	8	5	3,112 5 11
MORDIALLOC TOWN—								
Point Nepean Road	871	9	2	871 9 2
MORDIALLOC TOWN AND CARRUM BOROUGH (Joint Works)—								
Point Nepean Road	13	7	3	13 7 3
MORNINGTON SHIRE—								
Point Nepean Road	1,017 14 5	870	2	7	870 2 7
				1,017 14 5				
MORTLAKE SHIRE—								
Mortlake-Ararat Road	550	10	1	
Mortlake-Warnambool Road	261	4	4	
Terang-Mortlake Road	444	7	10	1,256 2 3
MORWELL SHIRE—								
Boolarra-Foster Road	119 4 6	25	0	7	
Boolarra-Welshpool Road	1,507 17 3	145	0	5	
Jeeralang West Road	1,019 5 1	116	15	0	
Prince's Highway	1,256 7 8	326	4	11	
Yarram Boolarra Road	8 18 0	623 0 11
				3,911 12 6				
MORWELL AND TRARALGON SHIRES (Joint Works)—								
Jeeralang West Road	168 7 5	63	7	4	63 7 4
MORWELL AND WOORAYL SHIRES (Joint Works)—								
Boolarra-Foster Road	40 0 0	40 0 0
MOUNT ROUSE SHIRE—								
Ballarat-Hamilton Road	694	8	5	
Hamilton-Dunkeld Road	267	7	1	
Hamilton-Penshurst Road	684	7	6	
Penshurst-Caramut Road	985	13	1	2,631 16 1
MULGRAVE SHIRE—								
Ferntree Gully Road	1,755 5 4	1,889	16	3	
Prince's Highway	45 13 6	2,406	1	2	4,295 17 5
				1,800 18 10				
McIVOR SHIRE—								
Heathcote-Elmore Road	479	5	5	
Heathcote-Redesdale Road	523	3	0	
Kilmore-Heathcote-Bendigo Road	455 11 11	445	18	7	1,448 7 0
				455 11 11				
NARRACAN SHIRE—								
Prince's Highway	0 8 0	2,979	8	1	
Trafalgar-Thorpdale Road	10,610 16 0	46	11	1	
Trafalgar-Willowgrove Road	0 8 0	91	16	1	
Walhalla Road	{ Sh. 228 6 11			
					{ Bd. 240 19 11			
Yarragon-Leongatha Road	223 1 3	556	12	1	
Yarragon-Shady Creek Road	0 8 0	54	9	6	4,198 3 8
				10,835 1 3				
NEWHAM AND WOODEND SHIRE—								
Lancefield Road	300	19	10	
Melbourne-Bendigo Road	168	17	2	
Tylden Road	47	17	9	517 14 9
NEWHAM AND WOODEND AND GISBORNE SHIRES (Joint Works)—								
Melbourne-Bendigo Road	40	0	0	40 0 0
NEWHAM AND WOODEND AND KYNETON SHIRES (Joint Works)—								
Tylden Road	123	0	0	123 0 0
NEWSTEAD AND MOUNT ALEXANDER SHIRE—								
Castlemaine-Daylesford Road	300	18	7	
Castlemaine-Maryborough Road	327	1	11	
Creswick Road	78	2	0	
Maldon Road	105	8	11	
Melbourne-Bendigo Road	0	2	0	811 13 5
Carried forward	166,043 3 9	186,546 11 3

STATEMENT OF EXPENDITURE IN CONNEXION WITH CONSTRUCTION AND MAINTENANCE, ETC.—continued.

Municipality and Road.	Permanent Works.		Maintenance.	
	Amount.	Total.	Amount.	Total.
	£ s. d.	£ s. d.	£ s. d.	£ s. d.
Brought forward	166,043 3 9	..	186,546 11 3
NEWSTEAD AND MOUNT ALEXANDER AND TULLAROOP SHIRES (Joint Works)				
Castlemaine-Maryborough Road	30 15 0		2 14 4	
		30 15 0		2 14 4
NUMURKAH SHIRE—				
Echuca-Picola Road		173 16 4	
Nathalia-Kyabram Road		67 16 5	
Numurkah-Nathalia Road	76 3 9		538 11 7	
Numurkah-Tungamah Road	73 16 7		803 12 7	
Shepparton-Numurkah-Cobram Road	1,863 17 6		787 19 10	
		2,013 17 10		2,371 16 9
NUMURKAH AND DEAKIN SHIRES (Joint Works)—				
Echuca-Picola Road		138 14 4	
				138 14 4
NUNAWADING SHIRE—				
Main Healesville Road		2,499 10 0	
				2,499 10 0
OAKLEIGH BOROUGH—				
Ferntree Gully Road	1,272 4 8		17 14 0	
Prince's Highway		105 13 10	
		1,272 4 8		123 7 10
OMEQ SHIRE—				
Benambra Road		147 17 9	
Bruthen-Omeo Road	1,169 5 7		3,847 8 10	
Glen Wills Road	57 2 6		{ Sh. 419 3 11	
			{ Bd. 177 10 4	
Mountain Ash Road		751 4 10	
		1,226 8 1		5,343 5 8
ORBOST SHIRE—				
Cann Valley Road		2,639 5 0	
Marlo Road	1,331 16 5		194 11 4	
Prince's Highway	93 6 0		{ Sh. 304 15 1	
			{ Bd. 6,345 8 2	
Prince's Highway (Snowy River Bridge)	115 7 1		..	
		1,540 9 6		9,483 19 7
OTWAY SHIRE—				
Beech Forest-Apollo Bay Road	87 1 3		366 17 9	
Cobden-Pt. Campbell-Princetown Road		54 3 0	
Forrest-Apollo Bay Road	2,169 10 10		599 13 1	
Glenaire-Laver's Hill Road		91 15 1	
		2,256 12 1		1,112 8 11
OXLEY SHIRE—				
Bright Road	69 9 10		218 3 5	
Greta-Glenrowan Road	54 16 0		5 0 9	
Oxley		65 12 7	
		124 5 10		288 16 3
OXLEY AND BEECHWORTH SHIRES (Joint Works)—				
Bright Road		0 16 6	
				0 16 6
PHILLIP ISLAND AND WOOLAMAI SHIRE—				
Almurta Road		99 13 7	
Dalyston-Wonthaggi Road	593 6 2		177 10 3	
Inverloch-Wonthaggi Road		182 6 3	
Korumburra-Wonthaggi Road	1,068 15 6		160 10 6	
Main Coast Road	1,627 9 5		479 3 8	
Wonthaggi-Loch Road	726 11 11		371 16 0	
		4,016 3 0		1,471 0 3
PORTLAND SHIRE—				
Heath Road		136 6 3	
Portland-Casterton Road	792 14 0		111 12 8	
Prince's Highway		867 7 11	
Portland-Hamilton Road		234 18 3	
		792 14 0		1,350 5 1
PORT FAIRY BOROUGH—				
Hamilton Road		178 16 5	
Prince's Highway	1 17 9		557 0 0	
		1 17 9		735 16 5
PRESTON TOWN—				
Epping Road		519 2 0	
Whittlesea Road		802 5 1	
				1,321 7 1
PYALONG SHIRE—				
Kilmore-Heathcote-Bendigo Road		182 5 6	
				182 5 6
QUEENSLIFF BOROUGH—				
Geelong Road		274 2 11	
				274 2 11
RIPON SHIRE—				
Ballarat-Ararat Road		243 5 9	
Ballarat-Hamilton Road		946 14 6	
Skipton Road	409 1 10		446 6 4	
		409 1 10		1,636 6 7
Carried forward	179,727 13 4	..	214,883 5

STATEMENT OF EXPENDITURE IN CONNEXION WITH CONSTRUCTION AND MAINTENANCE, ETC.—*continued.*

Municipality and Road.	Permanent Works.				Maintenance.			
	Amount.		Total.		Amount.		Total.	
	£	s. d.	£	s. d.	£	s. d.	£	s. d.
Brought forward..	179,727	13 4	214,883	5 9
RIPON AND ARARAT SHIRES (Joint Works)— Ballarat-Ararat Road	116	2 2	116	2 2
Ripon and Ballarat Shires (Joint Works)— Ballarat-Ararat Road	0	1 7	0	1 7
RIPON AND HAMPDEN SHIRES (Joint Works)— Ballarat-Hamilton Road	346	19 1	346	19 1
RIPON AND LEXTON SHIRES (Joint Works)— Ballarat-Ararat Road	163	19 5	163	19 5
ROCHESTER SHIRE— Bendigo-Echuca Road	1,021	15 2	38	12 3
Rochester-Bamawm-Prairie Road	120	15 7
Timmering Road	63	3 7	306	10 0
			1,084	18 9			465	17 10
RODNEY SHIRE— Kyabram-Nathalia Road	0	13 5
Kyabram-Tongala Road	245	14 5
Mooroopna-Undera Road	540	11 3	127	11 8
Rochester-Kyabram Road
Shepparton-Tatura Road	1,535	4 6	870	0 9
Tatura-Byrneside-Kyabram Road	1,729	3 5	1,184	19 5
Tatura-Murchison Road	314	18 11	146	6 1
			4,119	18 1			2,575	5 9
RODNEY AND DEAKIN SHIRES— Rochester Kyabram Road	0	18 3	0	18 3
RODNEY AND SHEPPARTON SHIRES (Joint Works)— Shepparton-Tatura Road	303	4 10	303	4 10
RODNEY AND WARANGA SHIRES (Joint Works)— Tatura-Murchison Road	606	1 10
			606	1 10				
ROMSEY SHIRE— Kilmore-Lancefield Road	186	6 9
Melbourne-Lancefield Road	1,075	14 11
Woodend-Lancefield Road	119	4 3
							1,381	5 11
ROMSEY AND KILMORE SHIRES (Joint Works)— Kilmore-Lancefield Road	9	12 8	9	12 8
ROSEDALE SHIRE— Prince's Highway	404	14 7
Sale-Yarram Road	260	4 4
Seaspray Road	20	2 1	179	11 5
Traralgon-Gormandale Road	7	6 3
Willung Road	0	15 11
			20	2 1			852	12 6
ROSEDALE AND ALBERTON SHIRES (Joint Works)— Carrajung-Gormandale Road	91	12 1
Seaspray Road	1,439	12 0
			1,439	12 0			91	12 1
RUTHERGLEN SHIRE— Chiltern-Howlong Road	413	10 3	137	9 3
Rutherglen-Wahgunyah Road	19	7 3	167	18 6
Springhurst-Rutherglen Road	110	13 5
Sydney Road	16	10 1
Wodonga Road	201	15 8
Yarrawonga Road	116	10 9
			432	17 6			750	17 8
SALE BOROUGH— Prince's Highway	3	1 6
Sale-Longford Road	239	8 4
							242	9 10
SEYMOUR SHIRE— Goulburn Valley Road	6	18 3
Seymour Yea Road	29	11 4	15	10 5
Sydney Road	65	0 0	388	7 11
Upper Goulburn Road	170	9 0	73	4 9
			265	0 4			484	1 4
SHEPPARTON SHIRE— Dookie-Nalinga Road	1,669	13 0	163	18 7
Shepparton-Nagambie Road	5,149	3 11	81	4 5
Shepparton-Nalinga Road	145	6 4	825	9 1
Shepparton-Numurkah Road	285	13 2	29	15 8
			7,249	16 5			1,100	7 9
SHEPPARTON AND RODNEY SHIRES (Joint Works)— Shepparton-Mooroopna Road	15	14 3	309	0 10
			15	14 3			309	0 10
Carried forward	194,961	14 7	224,077	15 3

STATEMENT OF EXPENDITURE IN CONNEXION WITH CONSTRUCTION AND MAINTENANCE, ETC.—continued.

Municipality and Road.	Permanent Works.				Maintenance.			
	Amount.		Total.		Amount.		Total.	
	£	s. d.	£	s. d.	£	s. d.	£	s. d.
Brought forward	194,961	14 7	224,077	15 3
SOUTH BARWON SHIRE—								
Barwon Bridge Road	8	11 8				
Barwon Heads Road			1,085	2 8		
Prince's Highway			1,143	16 3		
				8 11 8				2,228 18 11
SOUTH GIPPSLAND SHIRE—								
Boolarra-Foster Road	3,638	17 3			225	1 0		
Boolarra-Welshpool Road	1,992	17 8			225	16 8		
Falls Road			30	10 0		
Foster-Yarram Road	389	4 8			234	5 0		
Stony Creek-Dollar Road	218	7 6			45	17 0		
Toora-Gunyah Road			79	3 8		
				6,239 7 1				840 13 4
SOUTH GIPPSLAND AND ALBERTON SHIRES (Joint Works)—								
Boolarra-Welshpool Road			177	15 9		
				..				177 15 9
ST. ARNAUD BOROUGH—								
Avoca-St. Arnaud Road			107	11 4		
Charlton Road			0	19 9		
Navarre Road			336	18 1		
St. Arnaud-Donald Road			103	16 2		
								549 5 4
STAWELL BOROUGH—								
Ararat-Stawell Road	874	12 0			222	17 6		
Glenorchy Road			15	0 0		
				874 12 0				237 17 6
STAWELL BOROUGH AND STAWELL SHIRE (Joint Works)—								
Ararat-Stawell Road			65	3 4		
								65 3 4
STAWELL SHIRE—								
Ballarat-Stawell Road			149	18 8		
Horsham-Wal Wal Road			288	7 8		
Landsborough Road			217	11 9		
Marnoo Road			194	3 4		
Navarre Road			475	11 1		
Stawell-Glenorchy-Horsham Road			1,922	17 4		
Stawell-Warracknabeal Road			260	1 6		
								3,508 11 4
STAWELL AND KARA KARA SHIRES (Joint Works)—								
Navarro Road			27	5 0		
								27 5 0
STRATHFIELDSAYE SHIRE—								
Heathcote-Bendigo Road			396	3 1		
Mandurang Road			528	13 0		
Strathfieldsaye Road			400	2 4		
								1,324 18 5
SWAN HILL SHIRE—								
Euston Road	321	10 9			360	16 10		
Nyah-Ouyen Road	1	19 8			216	0 3		
Piangil Station Road			58	4 3		
Swan Hill Road			451	7 4		
Tooleybuc Road	1,322	2 4				
Ultima Road	1,204	11 9			220	18 4		
Ultima-Sea Lake Road			165	13 3		
				2,850 4 6				1,473 0 3
TALBOT SHIRE—								
Maryborough-Avoca Road			14	5 11		
Maryborough-Ballarat Road			124	5 6		
								138 11 5
TAMBO SHIRE—								
Bairnsdale-Bruthen Road	1,110	6 0			303	7 6		
Bruthen-Omeo Road			1	1 9		
Nowa Nowa-Buchan-Gelantipy Road	71	19 11			336	12 4		
Prince's Highway	19	6 0			901	6 10		
				1,201 11 11				1,542 8 5
TOWONG SHIRE—								
Murray Valley Road			301	14 9		
Omeo Road	180	12 5			Sh. 650	8 11		
					Bd. 177	10 3		
Shelley-Jingellic Road		
Wodonga Road			79	14 1		
				180 12 5				1,209 8 0
TRARALGON SHIRE—								
Callignee Road	213	8 3			1	10 0		
Prince's Highway	804	17 6			735	11 9		
Traralgon-Gormandale Road			506	5 11		
Traralgon-Jeeralang Road		
				1,018 5 9				1,243 7 8
TULLAROOP SHIRE—								
Avoca Road			22	10 0		
Ballarat Road			96	19 3		
Castlemaine-Maryborough Road	87	0 0			545	11 7		
Eddington Road			28	8 5		
Natte Yallock Road			384	14 11		
				87 0 0				1,078 4 2
Carried forward	207,421	19 11	239,723	4 1

STATEMENT OF EXPENDITURE IN CONNEXION WITH CONSTRUCTION AND MAINTENANCE, ETC.—continued.

Municipality and Road.	Permanent Works.		Maintenance.	
	Amount.	Total.	Amount.	Total.
	£ s. d.	£ s. d.	£ s. d.	£ s. d.
Brought forward	207,421 19 11	..	239,723 4 1
TUNGAMAH SHIRE—				
Cobram-Strathmerton Road	59 12 7		2 10 8	
Numurkah-Tungamah-Wilby Road		276 15 2	
St. James Road	1,633 11 9		9 12 6	
Yarrowonga-Cobram Road	248 6 0		62 1 8	
		1,941 10 4		351 0 0
UPPER MURRAY SHIRE—				
Corryong Road	5,559 11 2		389 9 1	
Tintaldra Road	821 1 4		204 17 0	
		6,380 12 6		594 6 1
UPPER YARRA SHIRE—				
Don Road		4 9 7	
Warburton Road	0 4 1		807 3 7	
Wood's Point Road	383 16 0		Sh. 43 11 0	
		384 0 1	Bd. 523 13 1	1,378 17 3
VIOLET TOWN SHIRE—				
Shepparton Road		79 14 6	
Sydney Road	961 19 9		162 8 4	
Violet Town-Dookie Road		138 7 4	
		961 19 9		380 10 2
WALPEUP SHIRE—				
Mildura Road	764 1 6		..	
Ouyen-Pinaroo Road	9,722 16 6		1,074 7 4	
Sea Lake Road		215 4 6	
		10,486 18 0		1,289 11 10
WANGARATTA BOROUGH—				
Beechworth Road		62 6 10	
Sydney Road	2,730 13 6		1,635 16 0	
		2,730 13 6		1,698 2 10
WANGARATTA SHIRE—				
Beechworth Road	60 15 5		77 18 2	
Rutherglen Road	1,538 19 11		5 15 9	
Sydney Road	2,009 7 5		159 19 11	
Yarrowonga Road	0 16 0		193 11 1	
		3,609 18 9		437 4 11
WANGARATTA AND BEECHWORTH SHIRES (Joint Works)—				
Beechworth Road	18 1 8		17 7 0	
		18 1 8		17 7 0
WANGARATTA AND OXLEY SHIRES (Joint Works)—				
Sydney Road "A"		1 14 0	
				1 14 0
WANGARATTA SHIRE AND WANGARATTA BOROUGH (Joint Works)—				
Sydney Road "B"		7 10 0	
				7 10 0
WANNON SHIRE—				
Coleraine-Harrow-Apsley Road		596 6 4	
Hamilton-Coleraine-Casterton Road		1,943 14 5	
Wannon Bridge Road		285 18 0	
				2,825 18 9
WANNON AND GLENELG SHIRES (Joint Works)—				
Hamilton-Coleraine-Casterton Road		11 17 1	
				11 17 1
WARANGA SHIRE—				
Colbinabbin-Gorop Road	299 0 0		100 9 10	
Elmore-Colbinabbin Road	1,132 1 0		1,103 9 11	
Heathcote-Elmore Road	517 0 0		91 2 10	
Murchison-Rushworth Road		105 10 2	
Tatura Road		3 12 9	
		1,948 1 0		1,404 5 6
WARANGA AND GOULBURN SHIRES (Joint Works)—				
Murchison-Rushworth Road		194 15 8	
				194 15 8
WARANGA AND HUNTLY SHIRES (Joint Works)—				
Elmore-Colbinabbin Road		2 3 3	
				2 3 3
WARRAGUL SHIRE—				
Bloomfield Road		77 1 8	
Brandy Creek Road	1,309 3 2		569 9 10	
Darnum-Allambee Road		187 17 0	
Prince's Highway		2,051 12 0	
Warragul-Korumburra Road	89 9 2		50 18 1	
Warragul-Leongatha Road	3 4 0		455 9 5	
		1,401 16 4		3,392 8 0
WARRAGUL AND KORUMBURRA SHIRES (Joint Works)—				
Warragul-Korumburra Road	946 15 0		..	
		946 15 0		
WARRNAMBOOL SHIRE—				
Allansford-Nirrandra Road		3,791 17 5	
Garvoc-Laang Road		659 7 3	
Koroit Road	
Mortlake Road		3,807 4 6	
Prince's Highway		8,192 4 7	
				15,850 13 9
Carried forward	238,232 6 10	..	269,561 10 2

STATEMENT OF EXPENDITURE IN CONNEXION WITH CONSTRUCTION AND MAINTENANCE, ETC.—*continued.*

Municipality and Road.	Permanent Works.				Maintenance.			
	Amount.		Total.		Amount.		Total.	
	£	s. d.	£	s. d.	£	s. d.	£	s. d.
Brought forward	238,232	6 10	269,561	10 2
WERRIBEE SHIRE—								
Geelong-Bacchus Marsh Road	4	16	0	
Prince's Highway	1,735	1	7	
								1,770 17 7
WHITTLESEA SHIRE—								
Epping Road	444	1 2	403	4	1	
Main Whittlesea Road	2,153	0	4	
Wallan Road	167	3	1	
Whittlesea-Kinglake Road	309	2 4	655	0	5	
					753	3	6	3,378 7 11
WIMMERA SHIRE—								
Dimboola Road	508	12 6	303	7	9	
Dooen Road	1,232	10 9	9	18	1	
Horsham-Wal Wal Road	698	18 5	399	2	8	
Natimuk Road	2,689	2 0	0	0	5	
					5,129	3	8	712 8 11
WIMMERA AND ARAPILES SHIRES (Joint Works)—								
Horsham-Hamilton Road	591	9	9	591 9 9
WINCHELSEA SHIRE—								
Birregurra-Forrest Road	33	2 2	312	14	2	
Forrest-Apollo Bay Road	
Lorne Road	3,616	8 0	429	0	5	
Prince's Highway	1,679	0	9	
					3,649	10	2	2,420 15 4
WODONGA SHIRE—								
Murray Valley Road	21	19	11	
Sydney Road	6,810	9 9	789	15	5	
Tallangatta Road	574	11	5	
Wodonga-Yackandandah Road	25	18	3	
					6,810	9	9	1,412 5 0
WONTHAGGI BOROUGH—								
Loch-Wonthaggi Road	66	17	10	
Wonthaggi-Inverloch Road	73	11	0	
Wonthaggi-Korumburra Road	48	10	10	
								188 19 8
WONTHAGGI BOROUGH AND PHILLIP ISLAND AND WOOLAMAI SHIRE (Joint Works)								
Loch-Wonthaggi Road	181	14	1	181 14 1
WOORAYL SHIRE—								
Farmers Road	579	7 10	45	13	9	
Inverloch-Leongatha Road	724	2	9	
Inverloch-Wonthaggi Road	14	15	9	
Leongatha-Yarragon Road	4	11 2	766	5	3	
Lower Tarwin Road	107	10 6	635	8	10	
Main South Gippsland Road	865	16 8	442	6	3	
Mardan Road	178	6 11	174	9	7	
Warragul-Leongatha Road	1	11 3	51	16	0	
Wild Dog Valley Road	336	14 0	38	19	7	
					2,073	18	4	2,893 17 9
WYCHEPROOF SHIRE—								
Birchip-Sea Lake Road	8	8	9	
Birchip-Wycheproof Road	48	6	7	
Ouyen-Sea Lake Road	118	0	0	
Sea Lake-Ultima Road	6	2 0	330	16	3	
Woomelang-Sea Lake Road	126	9	0	
Wycheproof-Boort Road	0	0	11	
Wycheproof-Sea Lake Road	871	11 2	849	8	9	
					877	13	2	1,481 10 3
YACKANDANDAH SHIRE—								
Dederang Road	1,597	9 5	556	8	3	
Gundowring Road	2,121	3 7	650	6	2	
Tallangatta Road	140	10	5	
Yackandandah-Wodonga Road	453	2 4	551	18	4	
					4,171	15	4	1,899 3 2
YARRAWONGA SHIRE—								
Tungamah-Wilby Road	120	0 0	
Wangaratta-Yarrawonga Road	2,630	0 0	234	6	5	
Yarrawonga-Cobram Road	1,245	0 0	217	9	6	
Yarrawonga-Rutherglen Road	30	5	6	
					3,995	0	0	482 1 5
YEA SHIRE—								
Upper Goulburn Road	5	19 2	233	9	6	
Yea-Glenburn Road	347	3 2	913	16	2	
					353	2	4	1,147 5 8
YEA AND BROADFORD SHIRES (Joint Works)—								
Goulburn Road	6	17	1	6 17 1
			£266,046	3 1			£288,129	3 9

APPENDIX E.

COUNTRY ROADS BOARD.

STATEMENT OF EXPENDITURE IN CONNEXION WITH CONSTRUCTION OF DEVELOPMENTAL
ROADS FOR YEAR ENDED 30TH JUNE, 1923.

Municipality and Road.	Acts Nos. 2944 and 2985.		Act No. 3255.	
	Amount.	Total.	Amount.	Total.
	£ s. d.	£ s. d.	£ s. d.	£ s. d.
ALBERTON SHIRE—				
Albert River Road	25 8 9		891 11 11	
Balook-Traralgon Road		479 0 0	
Binginwarri-Welshpool Road	60 13 5		
Carrajung-Balook Road	9 9 0		
Carrajung-Gormandale Road	4,318 10 11		1,176 0 0	
Devil's Finch Road	21 0 10		36 13 10	
Gelliondale Road	312 11 6		371 2 0	
Tarra Valley	5 15 0		
Whitelaw's Track	73 1. 1		108 4 0	
		4,826 10 6		3,062 11 9
ALBERTON AND MORWELL SHIRES (Joint Works)—				
Gunyah-Ryton Road	129 16 8		
		129 16 8		
ALBERTON, MORWELL, AND SOUTH GIPPSLAND SHIRES (Joint Works)—				
Gunyah-Ryton	101 7 0		
		101 7 0		
ALEXANDRA SHIRE—				
Terip Terip Road	1,323 7 5		7 15 0	
		1,323 7 5		7 15 0
ARARAT SHIRE—				
Pomonal Road	28 7 0		474 5 0	
		28 7 0		474 5 0
AVON SHIRE—				
Bengworden Road	49 13 4		
Bengworden-Clydebank Road	2,054 10 11		1,117 17 6	
Briagolong-Stratford Road	44 13 3		
Clydebank Road	41 15 2		
Dargo Road	14 5 0		782 10 0	
Talbotville Road	555 16 3		2,650 1 0	
		2,760 13 11		4,550 8 6
BACCHUS MARSH SHIRE—				
Brisbane Road	36 11 0		34 12 0	
Geelong-Bacchus Marsh Road	659 5 3		6,706 0 0	
McArthur's Road		31 7 7	
Staughton Vale Road	151 12 9		
		847 9 0		6,771 19 7
BACCHUS MARSH AND CORIO SHIRES (Joint Works)—				
Balliang Road		90 16 0	
				90 16 0
BAIRNSDALE SHIRE—				
Bulumwaal-Taberabbera	1,900 7 4		672 3 7	
Calulu-Hillside Road	9 1 2		
Fernbank-Stockdale Road	0 2 5		
Glenaladale-Lindenow Road	101 17 5		
Sarsfield-Water-holes	1,062 8 4		
		3,073 16 8		672 3 7
BALLAN SHIRE—				
Blakeville Road	25 12 0		
Daylesford Road	150 16 0		
		176 8 0		
BANNOCKBURN SHIRE—				
Burnside Road	18 16 1		2,398 2 0	
		18 16 1		2,398 2 0
BEECHWORTH SHIRE—				
Bowman's Forest Road	448 19 6		
Myrtleford-Yackandandah Road	279 6 4		
Stanley Road	141 15 8		
		870 1 6		
BEECHWORTH AND YACKANDANDAH SHIRES (Joint Works)—				
Myrtleford-Yackandandah Road	720 17 6		
		720 17 6		
BELFAST SHIRE—				
Spencer's Road	6 6 5		
Toolong Road	11 6 3		
		17 12 8		
BENALLA SHIRE—				
Benalla-Mansfield Road	516 17 7		
Lima Road	
Mollyullah-Tatong Road	1,025 19 3		
Tatong Road	602 11 4		384 0 0	
Toombullup Road	20 5 2		
		2,165 13 4		384 0 0
Carried forward	17,060 17 3	18,412 1 5

STATEMENT OF EXPENDITURE IN CONNEXION WITH CONSTRUCTION OF DEVELOPMENTAL ROADS, ETC.—*continued.*

Municipality and Road.	Acts Nos. 2944 and 2985.		Act No. 3255.	
	Amount.	Total.	Amount.	Total.
	£ s. d.	£ s. d.	£ s. d.	£ s. d.
Brought forward	17,060 17 3	..	18,412 1 5
BERWICK SHIRE—				
Bunyip-Tonimbuk East Road	111 11 6		..	
Gembrook-Beenak East Road	26 5 3		..	
Tyong-Tonimbuk Road	2 10 0		..	
Upper Pakenham-Upper Beaconsfield Road	2,093 17 4		..	
		2,234 4 1		
BRIGHT SHIRE—				
Buffalo River	0 10 0		144 10 11	
Happy Valley Road	2,055 19 4		188 16 0	
Myrtleford-Yackandandah Road	743 16 4		..	
		2,800 5 8		333 6 11
BRIGHT AND OXLEY SHIRES (Joint Works)—				
Buffalo River Road	3,084 11 9		6 2 1	
		3,084 11 9		6 2 1
BULLA SHIRE—				
Konagaderra Road	575 1 7		1,167 12 3	
Riddell Road	1,463 9 10		..	
		2,038 11 5		1,167 12 3
BULN BULN SHIRE—				
Apteds Road	156 7 9		..	
Fumina Road	253 9 6		1,661 2 3	
Labertouche Road	144 0 5		0 14 8	
Lardner Road	3 3 0		..	
Longwarry-Modella Road	1,024 18 6		..	
Mountain View Road	360 14 4		..	
Nayook Road	10 7 6		..	
Neerim North-Noojee Road	2 13 6		..	
Neerim South-Neerim East Road	2,237 14 7		115 10 2	
Rokey North-Jindivick Road	144 3 1		..	
South Road	12,825 1 9		289 0 0	
Torwood-Topiram Road	326 19 8		821 9 10	
		17,489 13 7		2,887 16 11
BULN BULN AND WARRAGUL SHIRES (Joint Works)—				
Lardner's Track	429 19 5		..	
		429 19 5		
BULN BULN AND BERWICK SHIRES (Joint Works)—				
Longwarry-Modella Road	127 1 5		..	
		127 1 5		
BUNINYONG SHIRE—				
Ballarat-Rokewood Road	23 3 3		..	
		23 3 3		
CHARLTON SHIRE—				
Barrakee Road	525 0 0		1,960 19 2	
Wooroonook Road	85 0 0		..	
		610 0 0		1,960 19 2
COHUNA SHIRE—				
Cohuna-Mead Road	226 13 7		16 5 0	
Cohuna-McMillan's Road	143 6 5		169 15 10	
Keely's Lane	197 8 3		192 2 6	
		567 8 3		378 3 4
COLAC SHIRE—				
Beeac-Dreeite Road	172 2 0		..	
Colac-Forrest Road	20 9 8		426 12 6	
Dreeite Road	2,578 2 7		..	
Gerangamete Road	24 0 0		..	
Read's Road	4,741 2 10		..	
		7,535 17 1		426 12 6
COLAC AND OTWAY SHIRES (Joint Works)—				
Colac-Forrest Road	55 4 2		2 7 8	
Colac-Beech Forest Road	149 13 7		..	
		204 17 9		2 7 8
CORIO SHIRE—				
Geelong-Bacchus Marsh	838 10 11		..	
		838 10 11		
CRANBOURNE SHIRE—				
Dalmore Road	149 16 3		..	
Koo-wee-rup-Modella Road	24 2 7		105 0 0	
Mank's Road	778 6 4		375 9 6	
		952 5 2		480 9 6
DANDENONG SHIRE—				
Worsley Road	29 9 8		..	
		29 9 8		
DIMBOOLA SHIRE—				
Albacutya Road	24 0 8		600 0 0	
		24 0 8		600 0 0
DONALD SHIRE—				
Corack-East Donald Road	0 1 0		..	
		0 1 0		
EAST LODDON SHIRE—				
Borong-Prairie Road	2,369 6 9		..	
Tanderra Road	77 1 5		2,256 15 1	
		2,446 8 2		2,256 15 1
Carried forward	58,497 6 6	..	28,912 6 10

STATEMENT OF EXPENDITURE IN CONNEXION WITH CONSTRUCTION OF DEVELOPMENTAL ROADS, ETC.—*continued.*

Municipality and Road.	Acts Nos. 2944 and 2985.				Act No. 3255.			
	Amount.		Total.		Amount.		Total.	
	£	s. d.	£	s. d.	£	s. d.	£	s. d.
Brought forward	58,497	6 6	28,912	6 10
ELTHAM SHIRE—								
Balee-Kangaroo Ground Road	93	0 0			750	0 0		
Cottle's Bridge Road	57	1 9			1,175	11 8		
Kinglake-Kinglake East Road			150	0 0		
Tairuwarra Road	11	17 8			4	12 10		
Whittlesea-Kinglake Road	976	12 0				
Yarra Glen-Kinglake East Road	512	15 4			1,789	6 10		
Yarra Glen-Toolangi Road	2	18 0			1,070	0 0		
			1,654	4 9			4,939	11 4
ELTHAM AND YEA SHIRES (Joint Works)—								
Kinglake-Kinglake East Road	8	15 6			75	0 0		
			8	15 6			75	0 0
EUROA SHIRE—								
Euroa-Strathbogrie Road	1,972	5 9				
			1,972	5 9				
FERNTREE GULLY SHIRE—								
Belgrave-Emerald Road	2,409	4 4			2,890	10 10		
Emerald-Monbulk Road	1,010	3 8			1,880	16 7		
Lysterfield Road	13	8 0			642	0 0		
Reservoir Road	166	19 6			2,830	2 6		
Sassafras Creek Road	90	1 2			1,506	19 6		
The Patch Road	58	6 6				
			3,748	3 2			9,750	9 5
FLINDERS SHIRE—								
Baldry's Road	3,678	17 9			1,109	10 3		
Bittern-Dromana Road	242	19 2			101	0 8		
Main Creek Road	10	11 8			512	10 0		
Red Hill Road	1,496	5 2			110	0 0		
Shoreham-Red Hill Road	388	18 3				
			5,817	12 0			1,833	0 11
FRANKSTON AND HASTINGS SHIRE—								
Baxter-Pearcedale Road	736	0 0				
Cranbourne-Frankston Road	8	5 5				
Frankston-Dandenong Road	1,808	12 7				
Hodgin's Road	495	4 3				
Moorooduc-Somerville Road	5,877	15 2				
Seaford Road	204	1 6				
Tyabb-Mornington Road	1,027	0 9				
			10,156	19 8				
HAMPDEN SHIRE—								
Berrybank Road	104	5 2				
Mount Bute Road	4,754	16 8			2,266	11 7		
			4,859	1 10			2,266	11 7
HEALESVILLE SHIRE—								
Buxton-Marysville Road	169	1 6				
Healesville-Toolangi Road	1,064	0 8				
Healesville-Woori Yallock	99	11 6				
Myer's Creek	497	17 2				
			1,830	10 10				
HEYTESBURY SHIRE—								
Curdie's Siding	6	11 10				
Kennedy's Creek Road	245	6 0				
Princetown Road			0	8 4		
Timboon-Nirranda Road	367	6 3			5	16 9		
Timboon-Port Campbell	646	3 8			173	12 4		
Timboon-Scots' Creek Road	98	0 6			69	5 1		
			1,363	8 3			249	2 6
KERANG SHIRE—								
Murrabit Road	1,601	16 3				
			1,601	16 3				
KORUMBURRA SHIRE—								
Arawatta Road	1,518	9 4				
Bena-Kongwak Road	2,334	17 9			0	5 4		
Clancy's Road	2,218	4 1			71	9 3		
Ferriers	1,166	11 11				
Korumburra-Fairbank Road	1,438	2 1				
Loch-Nyora Road	1	1 0				
Poowong Estate Road	2,576	18 5			51	0 0		
Poowong-Olsen Road	1,045	13 9				
Poowong-Ranceby Road	210	6 11				
Sheepway's Road	5	19 4			472	0 0		
Stewart's Road	3,606	6 3			892	1 0		
Torwood-Topiram Road	285	15 0				
Wild Dog Valley Road	135	8 3				
			16,543	14 1			1,486	15 7
KOWREE SHIRE—								
Elderslie Road	44	1 2				
Elderslie-Narracoorte			470	5 7		
Little Desert Road	35	14 0				
			79	15 2			470	5 7
KYNETON SHIRE—								
North Blackwood Road	569	10 9				
			569	10 9				
Carried forward	108,703	4 6	49,983	3 9

STATEMENT OF EXPENDITURE IN CONNEXION WITH CONSTRUCTION OF DEVELOPMENTAL ROADS, ETC.—*continued.*

Municipality and Road.	Acts Nos. 2944 and 2985.		Act No. 3255.	
	Amount.		Amount.	
	£	s. d.	£	s. d.
Brought forward	108,703 4 6	..	49,983 3 9
LAWLOIT SHIRE— Serviceton Road	360 2 3	360 2 3
LILYDALE SHIRE— Beenak-Seville Road Monbulk-Seville Road Swansea Road Wandin Road Wantirna Road	8 1 6 140 11 8 55 16 2 114 11 7 2 16 0	6 1 10 1,046 0 0 .. 0 3 6 707 0 0	1,759 5 4
LOWAN SHIRE— Woorak Road Yanac Station Road 475 8 0	874 3 4 ..	874 3 4
MELTON SHIRE— Coburn's Road	3,105 18 9	..	
MANSFIELD SHIRE— Merton-Strathbogie Road Tolmie	238 17 6 515 6 4	.. 192 16 0	192 16 0
MILDURA SHIRE— Benetook Avenue Brownport Road Colignan Road Merbein West Road	79 12 11 205 0 0 344 15 0 26 16 3	39 16 2	39 16 2
MINHAMITE SHIRE— Heywood Road Lake Gorrie Road Woodlands Road	447 9 2 74 2 10 4,439 12 7	2,994 7 3 644 0 0 ..	3,638 7 3
MIRBOO SHIRE— Berry's Creek Road Boolarra-South Mirboo Road Clear Creek Road Mardan Mirboo-Boolarra Road Mirboo-Leongatha Road Mirboo-Thorpdale Road Mirboo-Yarragon Road Nichol's Road	2,548 13 11 364 3 7 361 17 0 394 3 8 873 16 3 2,270 7 6 24 16 6 1,886 2 1 1,109 14 6	1 1 6 45 19 6 ..	47 1 0
MORNINGTON SHIRE— Tyabb Road	90 8 2	776 10 0	776 10 0
MORWELL SHIRE— Boolarra-Foster Road Boolarra-Morwell Road Boolarra-South Mirboo Road Jeeralang West Jumbuk Road Livingstone Road Middle Creek Mirboo-Boolarra Road Morwell River Ryton-Gunyah Road Shelcot Road Tyer's Road	227 19 2 633 4 5 25 17 3 35 13 8 3,992 19 4 157 13 11 107 8 10 6,041 2 10 1,353 4 8 19 14 6 456 1 1 1,510 9 4	0 2 7 237 0 0 14 13 9 .. 2,088 11 2 .. 1,853 2 9 .. 86 16 0 548 0 0	4,828 6 3
MORWELL AND ALBERTON SHIRES (Joint Works)— Jeeralang West Road	30 0 0	..	
MORWELL AND SOUTH GIPPSLAND SHIRES (Joint Works)— Ryton-Gunyah Road	64 0 0	..	
MORWELL AND TRARALGON SHIRES (Joint Works)— Jeeralang West Road Tyer's Road	45 18 9 119 0 0	164 18 9
Carried forward	143,557 12 11	..	62,664 10 1

STATEMENT OF EXPENDITURE IN CONNEXION WITH CONSTRUCTION OF DEVELOPMENTAL ROADS, ETC.—*continued.*

Municipality and Road.	Acts Nos. 2944 and 2985.		Act No. 3255.	
	Amount.	Total.	Amount.	Total.
	£ s. d.	£ s. d.	£ s. d.	£ s. d.
Brought forward	143,557 12 11	..	62,664 10 1
NARRACAN SHIRE—				
Aberfeldy—Mount Lookout Road
Allambee—Childers Road	41 5 5
Allambee Estate Road	6 11 8	..
Canal Road	51 4 3	..	590 17 9	..
Childers Road	45 13 0
Coalville—Moe Road	99 13 4
Erica Road	179 5 4
Hazeldeane—Yarragon Road	95 9 2	..	0 4 8	..
Mirboo—Yarragon Road	1,546 11 4
Moe—Moondarra Road	372 18 9	..	3 13 2	..
Moe—Westbury Road	243 5 2	..	2 13 1	..
Nilma—Shady Creek Road	18 18 4
Shady Creek Road	29 13 2
Telbit Road	157 14 3
Thorpdale East Road	149 4 4
Thorpdale—Yarragon Road	136 5 4
Trafalgar East Road	1,881 19 5
Trafalgar South Road	38 4 3
Trafalgar—Willowgrove	153 18 1
Yarragon—Leongatha Road	2,691 18 0	..	4 4 1	..
		7,933 0 11		608 4 5
NUNAWADING SHIRE—				
Terrara	1,289 9 7
		1,289 9 7		
OMEQ SHIRE—				
Benambra Road	906 16 3
Benambra—Corryong Road	39 10 5
Bindi Road	2,796 15 4	..	1,293 10 8	..
Bruthen—Omeo Road	2,238 10 4	..	1,706 3 0	..
Glen Wills Road	168 19 6
Little River Road	16 9 8
Mountain Ash Road	153 4 9
Mount Leinster Road	32 1 4
Reedy Creek Road	2,347 5 3	..	3 0 2	..
Swift's Creek Road
		8,699 12 10		3,002 13 10
ORBOST SHIRE—				
Bete—Balong Road	190 0 0
Broome's Road	24 2 0	..	0 12 6	..
Cann Valley Road	241 6 10
Combienbar Road	829 14 4
Groove's Road	21 0 0	..
Lochend Road	108 6 10	..
Lower Benim Road	50 0 0
Mallacoota West Road	30 0 0	..	148 0 10	..
Murrungowar Road	49 17 2	..	3,416 7 8	..
Orbost—Delegate Road	12,576 7 9
Prince's Highway	5,183 14 0	..	2,593 14 2	..
Tostaree Road	12 5 9
Wangrabelle Road	4,154 14 11	..	352 14 9	..
West Cann Road	135 13 5	..	10 0 0	..
		23,477 16 2		6,650 16 9
OTWAY SHIRE—				
Apollo Bay—Elliott River	88 4 10
Barham Valley Road	2,010 3 0	..	398 15 5	..
Beech Forest—Apollo Bay Road	3 15 8	..	80 9 1	..
Beech Forest—Laver's Hill Road	178 10 1	..	1,791 11 9	..
Beech Forest—Mount Sabine Road	85 18 8	..	27 3 0	..
Cape Patten Road	1,475 12 7	..	567 9 4	..
Colac Forrest Road	665 15 4
Denhart's Road	104 0 6
Ferguson—Charley's Creek	211 17 6	..	45 8 10	..
Forrest—Apollo Bay Road	77 11 2	..	2 3 0	..
Gellibrand—Carlisle Road	101 11 8	..	413 2 5	..
Kennedy's Creek Road	3,407 12 2	..	16 17 2	..
Laver's Hill—Chapple Vale—Devondale	377 0 1	..	438 19 0	..
Laver's Hill—Glenaire Road	678 16 4	..	948 8 11	..
Princetown Road	1,415 6 3	..	545 13 7	..
Wild Dog Valley Road	31 1 6
		10,912 17 4		5,276 1 6
OXLEY SHIRE—				
Abbeyard Road	38 1 10
Boggy Creek Road	125 15 8	..	6 16 1	..
Buffalo River Road	364 15 4	..	81 15 3	..
Carboor—Whorouly	391 18 6	..	639 15 10	..
King Valley Road	223 15 10	..
Toombullup Road	140 8 8
Whitfield—Tolmie Road	77 17 6
		1,138 17 6		952 3 0
OXLEY AND BRIGHT HIRES (Joint Works)—				
Buffalo River Road	1,000 0 0
		1,000 0 0		
Carried forward	198,009 7 3	..	79,154 9 7

STATEMENT OF EXPENDITURE IN CONNEXION WITH CONSTRUCTION OF DEVELOPMENTAL ROADS, ETC.—*continued.*

Municipality and Road.	Acts Nos. 2944 and 2985.		Act No. 3255.	
	Amount.	Total.	Amount.	Total.
	£ s. d.	£ s. d.	£ s. d.	£ s. d.
Brought forward	198,009 7 3	..	79,154 9 7
PHILLIP ISLAND AND WOOLAMAI SHIRE—				
Almurta—Glen Forbes	19 15 4		224 4 0	
Bass	2 4 0		..	
Dalyston—Glen Forbes Road	665 17 2		162 19 7	
Glen Alvie Road	89 1 2		10 13 2	
Glen Forbes Road	1,124 14 1		..	
Korumburra—Wonthaggi Road	59 9 11		419 17 11	
Krowera—Kerlot Road	2,107 16 10		3 19 7	
Sheepway's Road	168 1 1		35 16 5	
Wonthaggi—Loch Load	0 19 3		..	
		4,237 18 10		857 10 8
PORTLAND SHIRE—				
Gorae Road	23 9 7		587 5 0	
		23 9 7		587 5 0
ROCHESTER SHIRE—				
Nanneela Road	5 11 1		..	
		5 11 1		
ROMSEY SHIRE—				
Konagaderra Road	840 6 6		..	
		840 6 6		
ROMSEY AND GISBORNE SHIRES (Joint Works)—				
Riddell—Sunbury Road	29 14 8		1,680 0 0	
		29 14 8		1,680 0 0
SHEPPARTON SHIRE—				
Graham's Vale	1,929 17 8		..	
Stover's Road	4,861 14 2		835 10 1	
		6,791 11 10		835 10 1
SOUTH GIPPSLAND SHIRE—				
Agnes Falls	6 18 9		..	
Amey's Track	39 14 3		..	
Binginwarri South Road	40 12 5		..	
Boolarra—Foster Road	341 1 4		..	
Boy's Road	306 19 6		2 3 3	
Chadwick's Road	656 18 3		1 17 0	
Dollar—Dumbalk Road	11 9 6		..	
Dollar—Foster Road	68 16 6		0 18 10	
Foster—Mount Best Road	870 1 11		..	
Foster—Stony Creek Road	4,054 11 2		19 13 9	
Franklyn River Road	73 7 2		..	
Lawson Harding Road	1,071 17 10		..	
O'Grady's Ridge Road	301 6 9		22 0 0	
Rymbug's Hill Road	153 2 6		..	
Toora—Gonyah Road	103 11 5		206 8 0	
Toora—Wonyip Road	2,072 19 4		..	
Turton's Creek	8 5 11		..	
Waratah Road	501 1 2		0 9 11	
Whitelaw's Track	148 10 2		0 16 8	
Woorarra West Road	39 11 4		0 5 7	
Yanakie Road	3,063 18 11		5 9 9	
Stony Creek—Dollar Road		1,493 5 11	
		13,934 16 1		1,753 8 8
SWAN HILL SHIRE—				
Manangatang—Euston Road	4 16 7		..	
Tyntynder Road	1,534 16 11		..	
		1,539 13 6		
TAMBO SHIRE—				
Basin Road	945 12 6		8 18 9	
Buchan—Gelantipy Road	8 0 0		17 8 9	
Nowa Nowa—Buchan Road	1,037 6 3		2 14 0	
Nowa Nowa—Buchan—Gelantipy Road		9 16 0	
Prince's Highway	637 15 4		1 7 3	
Upper Tambo Road		1 7 3	
		2,628 14 1		41 12 0
TOWONG SHIRE—				
Eskdale Road	247 14 5		..	
Shelley—Jingellic Road	99 1 0		40 9 4	
Snowy Creek Road	424 11 8		..	
Tallangatta Creek Road	21 17 10		0 9 4	
Yabba Road	162 12 4		0 9 4	
		955 17 3		41 8 0
TRARALGON SHIRE—				
Callignee Road	220 0 6		59 6 5	
Callignee—Factory Road	21 3 0		..	
Traralgon—Creel Road	5,087 7 7		..	
Traralgon—Jeeralang Road	125 13 3		..	
Tyer's Road	34 5 0		..	
		5,488 9 4		59 6 5
UPPER MURRAY SHIRE—				
Benambra—Corryong Road	25 13 10		0 10 0	
Betoomba Station	34 19 3		0 3 0	
Kancobin Road		3,054 4 4	
Murray Valley Road	395 10 9		120 10 0	
Thowgla Road	663 13 6		1 1 0	
		1,119 17 4		3,176 8 4
Carried forward	235,605 7 4	..	88,186 18 9

STATEMENT OF EXPENDITURE IN CONNEXION WITH CONSTRUCTION OF DEVELOPMENTAL ROADS, ETC.—*continued.*

Municipality and Road.	Acts Nos. 2944 and 2985.		Act No. 3255.	
	Amount.	Total.	Amount.	Total.
	£ s. d.	£ s. d.	£ s. d.	£ s. d.
Brought forward	235,605 7 4	..	88,186 18 9
UPPER YARRA SHIRE—				
Don Road		78 8 4	
Little Yarra Road		1 9 0	
Wood's Point Road		6 19 10	
Woori Yallock-Cockatoo Road	67 10 0		3 8 4	
		67 10 0		90 5 6
VIOLET TOWN SHIRE—				
Harry's Creek	2,765 0 2		456 17 4	
		2,765 0 2		456 17 4
WALPEUP SHIRE—				
Cowangie Road		1,377 15 6	
Mildura Road		244 0 0	
Murrayville South Road		391 0 0	
Ouyen-Kulwin Road	197 9 4		58 0 0	
Ouyen-Tempy Road		163 15 0	
Ouyen-Patchewollock Road		533 0 0	
Walpeup-Patchewollock Road	542 2 6		315 7 0	
		739 11 10		3,082 17 6
WANGARATTA SHIRE—				
Boorhaman-Springhurst Road	568 12 5		..	
		568 12 5		
WARANGA SHIRE—				
Lauderdale Road	33 4 0		..	
Rushworth-Stanhope Road	377 16 0		..	
		411 0 0		
WARRAGUL SHIRE—				
Allambee Estate Road		3 13 10	
Bona Vista Road	80 8 7		..	
Ellibank Road	40 8 0		..	
Ferndale-Strezlecki Road		1,913 2 0	
Mountain View Road		37 2 3	
Nilma-Shady Creek Road	73 15 11		..	
Old Sale Road	214 17 7		718 5 11	
Telegraph Road	46 7 6		..	
Warragul-Lardner Road	1,792 13 3		..	
Warragul-Leongatha Road		565 0 6	
		2,248 10 10		3,237 4 6
WARRAGUL AND BULN BULN SHIRES (Joint Works)—				
Lardner's Track	558 18 6		..	
		558 18 6		
WARRAGUL AND NARRACAN SHIRES (Joint Works)—				
Old Sale	72 3 4		..	
		72 3 4		
WERRIBEE SHIRE—				
Soldiers' Road	7,400 14 9		..	
		7,400 14 9		
WIMMERA SHIRE—				
Wonwondah Road		24 8 5	
				24 8 5
WINCHELSEA SHIRE—				
Dean's Marsh-Retreat Road	847 1 8		5 5 7	
Inverleigh-Winchelsea Road	3,265 14 10		..	
Lorne Road	999 19 4		..	
		5,112 15 10		5 5 7
WODONGA SHIRE—				
Beechworth-Wodonga Road	6 9 2		..	
		6 9 2		
WOORAYL SHIRE—				
Allambee Estate Road		6 15 10	
Canavan's Road	16 8 8		..	
Dollar-Dumbalk Road	348 15 6		..	
East Tarwin Road	29 8 11		795 15 0	
Fairbank Road	1,735 4 0		526 5 2	
Inverloch-Lower Tarwin Road		340 0 0	
Koonwarra-Tarwin Road	345 17 7		647 0 3	
Lower Tarwin Road		13 16 8	
Nerrena	1,004 12 3		699 2 11	
Sagasser's Road	4 14 2		3 9 6	
Turton's Creek	8 19 10		..	
Warragul-Leongatha Road	186 5 8		..	
Yarragon-Leongatha Road	389 7 6		2 5 0	
		4,069 14 1		3,034 10 4
Carried forward	259,626 8 3	..	98,118 7 11

STATEMENT OF EXPENDITURE IN CONNEXION WITH CONSTRUCTION OF DEVELOPMENTAL ROADS, ETC.—*continued.*

Municipality and Road.	Acts Nos. 2944 and 2985.		Act No. 3255.	
	Amount.	Total.	Amount.	Total.
Brought forward	£ ..	259,626 8 3	£ ..	98,118 7 11
WYCHEPROOF SHIRE—				
Culgoa-Lalbert Road	28 19 3		827 12 6	
Glenloth-Wycheproof Road	1,977 8 6		..	
Sea Lake-Tyrell Downs Road	386 14 2		..	
		2,393 1 11		827 12 6
YACKANDANDAH SHIRE—				
Dederang-Tawanga Road	315 3 6		2 9 0	
Huon-Kiewa Road	43 16 0		..	
Kiewa-Wodonga Road	61 4 0		..	
Kergunyah Road	118 10 0		1 13 0	
Myrtleford-Yackandandah Road	346 3 0		129 11 1	
Running Creek Road	291 7 2		..	
Sandy Creek Road	57 19 7		..	
		1,234 3 3		133 13 1
YEA SHIRE—				
Kinglake-Kinglake East Road	1 10 0		..	
Killingsworth Road	1,600 5 5		..	
Molesworth-Dropmore Road	176 13 0		..	
		1,778 8 5		
		265,032 1 10		99,079 13 6

APPENDIX F.

COUNTRY ROADS BOARD.

PARTICULARS OF SURVEYS, ETC., ON ROADS DECLARED MAIN ROADS UNDER THE PROVISIONS OF THE COUNTRY ROADS ACT DURING THE YEAR ENDED 30TH JUNE, 1923.

Name of Municipality and Name of Road.	Locality of Works.	Lengths of Roads—			
		For which Permanent Surveys have been Made.	For which Plans have been Prepared.	For which Tenders have been Invited.	For which Tenders have been Accepted.
		Miles.	Miles.	Miles.	Miles.
UNDER MUNICIPALITIES.					
ALBERTON SHIRE— Carrajung-Gormandale Road	Metalling new deviation from Buttner's Saddle towards Gormandale	..	.93	.93	..
Yarram-Boolarra Road	Bridge over Max Creek—Contract 3P, 22-23 .. Jacobsen's Hill69	.69
ALEXANDRA SHIRE— Healesville-Alexandra Road	Near Riversdale Bridge07	.07	.07	.07
" " "	Northern side of Acheron Cutting61
" " "	Widening parts of Acheron Cutting11	.11	.11	.11
" " "	North of Little River Bridge at Taggerty32
Cathkin-Mansfield Road	Seven sections—between 21,075 and 57,480 feet	1.95
ARAPILES SHIRE— Horsham - Natimuk - Edenhope Road	Natimuk Township towards Horsham	1.48	1.1	1.1
" " "	Near Jacky Sand55
" " "	Near Norton Bridge
ARARAT SHIRE— Ballarat-Hamilton Road	At Westmere64	.64	.64	.64
BEECHWORTH SHIRE— Stanley Road	Stanley-Johnson's57	.57
Bright Road	Rocky Point section, near Owens River82	.82
Beechworth Road	Sections at the Rest and Black Springs49	.49
BENALLA SHIRE— Sydney Road	Near Holloway's, Glenrowan25
BERWICK SHIRE— Prince's Highway	Between Beaconsfield and Pakenham	1.4	1.4
Gembrook Road	Black's deviation—Upper Pakenham	1.43	1.43
Woori Yallock - Pakenham-Koo-wee-rup Road	South of Cockatoo9	.9
" " "	South of Pakenham97	..
BIRCHIP SHIRE— Donald - Birchip - Sea Lake - Road	Birchip Township, north	1.08	1.08
BORUNG SHIRE— Rainbow Road	Rainbow Road	1.13	1.13	1.13	1.13
BROADMEADOWS SHIRE— Sydney Road	Coburg boundary to Campbellfield	2	2	2	2
BUNGAREE SHIRE— Ballarat-Creswick Road	2.71	1.52
BUNINYONG SHIRE— Ballarat Road	Walsh's Hill33 carried out by day labour, except supply of 1,000 cubic yards of spalls	
CHARLTON SHIRE— Bendigo Road	Between 3,666 and 4,380 feet on continuous chainage	..	.14	.14	.14
" " "	Between 14,500 and 15,500 feet on continuous chainage	..	.19	.19	.19
" " "	Between 19,600 and 23,800 feet on continuous chainage	..	.99	.99	.99
St. Arnaud Road	Between 13,900 and 18,000 feet on continuous chainage	..	.78	.78	.78
" " "	Three crossings over Ananbranch, at Coonover	..	.28	.28	..
Donald Road	Between 28,600 and 29,200 feet, 34,200 to 35,600 feet; and 39,000 and 40,300 feet on continuous chainage	..	.97	.97	.97
Wycheproof Road	From Glenloth Road junction to Teddywaddy railway station	..	1.01
CHILTERN SHIRE— Sydney Road	Deviation east of Barnawartha railway station	.51	.51
DIMBOOLA SHIRE— Nhill Road	Between Geraug and Kiata75	1.45	1.45
Rainbow Road	About 3 miles north of Dimboola75	.75
DONALD SHIRE— Donald-Charlton Road	8 miles north-east of Donald	1.14	1.14
DUNDAS SHIRE— Hamilton-Dunkeld Road	At from 3½ to 4½ and 4½ to 5 miles from Hamilton, Parish of South Hamilton	.53	.28	Tenders for spalls and forming	
Hamilton-Horsham Road	At from 2½ to 2½, 17½ to 19½, and 37½ to 38½ miles from Hamilton, Parishes of North Hamilton, Cavendish, Mooralla, and Lambruk	1.99	.85	Tenders for spalls, and forming and gravelling	
Hamilton-Mount Gambier Road	At from 2½ to 2½, 8½ to 9½, and 14 to 14½ miles from Hamilton, Parishes of North Hamilton, Bochara, and Redruth	1.91	..	" " " "	
Hamilton-Warrnambool Road	At from 6 to 6½ and 6½ to 7½ miles from Hamilton, Parishes of South Hamilton and Croxton	.625	..	Tenders for spalls	
Hamilton-Port Fairy Road	At from 15½ to 16½, 17 to 17½, 18½ to 19, and 20 to 20½ miles from Hamilton, Parishes of Warrabkook and Byaduk	1.55	..	" " " "	
Hamilton-Portland Road	At from 2½ to 2½, 5 to 5½, and 8½ to 9½ miles from Hamilton, Parishes of South Hamilton and Yulecart	1.54	1	Tenders for spalls, and forming and gravelling	
DUNMUNKLE SHIRE— Minyip-Donald Road	Second section, north-east from Minyip—work completed	.5	.5	.5	.5
Stawell-Warracknabeal Road	Second section, south-east of Minyip—work completed	.6	.6	.6	.6
Rupanyup-Murtoa Road	Second section, westwards from Rupanyup—work completed	.4	.4	.4	.4
EAST LODDON SHIRE— Prairie Road	Metalling Humberts to Woods	2	2	1	1
Dingee Road	Metalling west of Dingee	1	1	1	1
ECHUCA BOROUGH— Echuca West Road	From Borough boundary to railway line	1.5	1.5	1.5	1.5
Carried forward		25.445	21.630	26.350	24.590

PARTICULARS OF SURVEYS, ETC., ON ROADS DECLARED MAIN ROADS, ETC.—*continued.*

Name of Municipality and Name of Road.	Locality of Works.	Lengths of Roads—			
		For which Permanent Surveys have been Made.	For which Plans have been Prepared.	For which Tenders have been Invited.	For which Tenders have been Accepted.
		Miles.	Miles.	Miles.	Miles.
UNDEE MUNICIPALITIES—<i>continued.</i>					
	Brought forward	25·445	21·630	26·350	24·593
ELTHAM SHIRE— Hurstbridge-Kinglake Road	Between Foster's Cutting and Kinglake Hotel, known as Laver's deviation	·88
FERNTREE GULLY SHIRE— Monbulk Road	Between Belgrave and "Hiawatha"	·38	·38
FLINDERS SHIRE— Dromana-Sorrento Road	Boneo Road to Tootgarook	1·32	1·32	1·32	1·32
FRANKSTON AND HASTINGS SHIRE— Point Nepean Road	Deviation—between Frankston and Mount Eliza Nyora Corner—on Mornington Shire boundary	2·02 ·09	2·02 ·09	2·02 ·09	2·02 ·09
GISBORNE SHIRE— Melbourne-Bendigo Road	Between 37 and 39 miles	1·02	1·02
	Starting at Gisborne Township	·65
GLENLYON SHIRE— Castlemaine-Daylesford Road	Mount Franklin towards Guildford, thirteen culverts re-decked with reinforced concrete	5·5	5·5	5·5
HEALESVILLE SHIRE— St. Fillan's-Marysville Road	Cemetery Hill deviation	1·25	1·25
HEYTESBURY SHIRE— Cobden-Port Campbell-Prince- town Road	Parish of Corriejong	·51	·51
HORSHAM BOROUGH— Natumuk Road	From Borough boundary to starting point of road in Horsham	1·46	1·46
HUNTLY SHIRE— Bendigo-Echuca Road	Epsom	·92	·92
KARA KARA SHIRE— Avoca-St. Arnaud Road	Commencing at Shire boundary at Redbank	·33	·33
	Navarre Road	1·66
KARKAROO SHIRE— Hopetoun - Woomelang - Sea Lake Road	West of Woomelang	2·46	2·07
	Hopetoun-Rainbow Road	1·92	1·92
	Hopetoun-Warracknabeal Road	1·14	1·14	1·14	1·14
KEKANG SHIRE— Koonrook - Barham Bridge Road	From Koonrook Siding to Barham Bridge	·99	·99	·99	·99
KORONG SHIRE— Bendigo-Charlton Road	Gravelling at Cosh's Corner—Contract 14P	·575	·575	·575	·575
	Gravelling between Burge and Burge	·475	·475	·475	·475
	Gravelling between Anderson and Hall	·801	·801	·801	·801
	Gravelling between Guthrie and Ross	·25	·25	·25	·25
	Boring—Hurstwood Road	·8	·8	·8	·8
	Serpentine Road	·788	·788	·788	..
KOWREE SHIRE— Edenhope-Goroke Road	Contracts 5P and 6P-23—42·72 chains and 30·6 chains—gravel road about 3½ miles from Goroke	·901	·901	·901	·901
	Contracts 1P and 2P 22-23—20 chains each Contract—gravel road near Maryvale, 9 miles from Goroke	·5	·5	·5	·5
	Booroopki-Road	·61	·61	·61	·61
	Contracts 3P and 4P 22-23—28·78 chains and 20·33 chains—gravel road about 8 miles and 15 miles from Goroke respectively	1·29	1·29	1·29	1·29
	Contracts 7P, 8P, and 9P, 22-23—56·96 chains and 46·28 chains gravel road, and 100 chains grubbing, near Cherrypool	1·02	1·02	1·02	1·02
	Contract 10P, 22-23—increasing width of road from 1 to 2 chains within half-a-mile Town- ship of Edenhope	1·02	1·02	1·02	1·02
LAWLOIT SHIRE— Nhill-Kaniva-Border Road	Metalling between Kaniva and Lawloit	·91	·91	·91
LEIGH SHIRE— Rokewood-Cressy Road	North from Werneth railway station	4·53	4·53	2 miles constructed by day labour (2·25 formed) Being carried out by day labour (70 per cent. completed)	..
	Werneth Road	1·06	1·06
LILYDALE SHIRE— Ringwood-Warrandyte Road	Gravelling, forming, and metalling	1·34	1·34	·51	·51
	Main Warburton Road	·87	·87	·87	·87
	Monbulk Road	3·97	1·59
	Clearing, forming, and metalling between Mon- bulk and Sylvan	1·65	1·65
	Clearing and forming section between Evelyn and Lilydale	·96	·96	·96	·96
LOWAN SHIRE— Dimboola-Kaniva Road	Between 68, 69, and 26, Balrootan, and Town- ship of Nhill; also between 5 and 2, Balrootan Between 65, and 143, 129 and 130, 117 and 148, Woorak	1·27	1·27	1·27	1·27
	Lorquon West Road	·72	·72	·72	·72
	Yanac Road	·98	·98	·98	·98
	Between 158 and 157, 171 and 167, 123 and 208, Tarraginmie
MAFFRA SHIRE— Tinamba-Boisdale Road	From 29,400 to 34,982 feet	7	7	1	1
	Heyfield-Licola Road	·6	·6	·6	·6
MANSFIELD SHIRE— Tolmie Road	Bridge over Broken River	·03	·03	·03	·03
	Fillings over culverts at 2 miles	·03	·03	·03	·03
	Clearing, grubbing, and formation	2·56	2·56	2·56	2·56
	Metalling 4,400 feet	·83	·83	·83	·83
	Dismantling and re-erection of Muddy Creek Bridge at Doon	·17	·17	·17	·17
	Metalling Mansfield Road east and Formation	·88	·88
MARONG SHIRE— Bendigo-Eddington Road	Near Laanecoorie	1·06	In progress by day labour
	Bendigo-Bridgewater Road	1·04	1·04
MILDURA SHIRE— Melbourne Road	Irymple to Red Cliffs	7·8	7·8
	At Irymple—Clearing	1	1	1	1
	Between Sandalong and Irymple avenues	·62	·62	·62	·62
	16th to 17th streets	1	1	1	1
	Walnut Avenue to Main Avenue, Merbein	3·73	3·73
	Carried forward	89·275	87·830	66·830	66·992

PARTICULARS OF SURVEYS, ETC., ON ROADS DECLARED MAIN ROADS, ETC.—*continued.*

Name of Municipality and Name of Road.	Locality of Works.	Lengths of Roads—			
		For which Permanent Surveys have been Made.	For which Plans have been Prepared.	For which Tenders have been Invited.	For which Tenders have been Accepted.
		Miles.	Miles.	Miles.	Miles.
<i>UNDER MUNICIPALITIES—continued.</i>					
MILDURA TOWN—	Brought forward	89·275	87·830	66·830	65·902
Deakin Avenue	10th to 12th streets, Town of Mildura ..	·284	·284	Carried out by day labour	
Langtree Avenue	7th to 8th streets	·121	·121	"	
MIRBOO SHIRE—	From Township to C. Wanke's	·75	·75
MOORABBIN SHIRE—	Centre Dandenong Road, Cheltenham—Per- manent Works	1·69	1·69
"	Centre Dandenong Road, Cheltenham—Main- tenance	1·27	1·27
MOUNT ROUSE SHIRE—	Between Dunkeld and 2 miles east of Glen Thompson	1·1	1·1
Hamilton-Dunkeld Road	Between Dunkeld and 3-mile post	·43	·43
Hamilton-Penshurst Road	Between Penshurst and 8-mile post north, and Penshurst and 1-mile post south	·5	·5
Penshurst-Caramut Road	Between Penshurst and 9-mile post	1·39	1·39
MORNINGTON SHIRE—	Mount Martha	1·2	1·2	1·2	1·2
NEWSTEAD AND MT. ALEXANDER SHIRE—	Extra approach to Joyce's Creek Bridge— Filling, gravelling, &c.	Approach	Approach	Approach	Approach
NUMURKAH SHIRE—	Between Nathalia railway station and Broken Creek	·41	·41	·41	·41
Shepparton-Numurkah-Cobr Road	Carlisle Street, Township of Wunghuu ..	·36	·36
OMEQ SHIRE—	Bald Hill Creek Bridge, Tongio; crushing spalls in heaps, Tongio Gap	Works completed	
ORBOST SHIRE—	Metalling Nicolson Street, Orbost	·32	·32
"	Metalling Salisbury Street, Orbost	·22	·22
"	Metalling from Perry's to Ross'	2·02	2·02
Marlo Road	Taking up Tramway Plant
Cann Valley Road	Construction of two 10-ft. span culverts ..	·004	·004	·004	·004
"	Widening side cuttings between Miles' and McCoy's	·28	·28
OXLEY SHIRE—	Deviation of Henley's Gap	·653	·653	·653	·653
Glenrowan-Greta Road	Deviation in Town and Parish of Glenrowan ..	·597	·597	·597	·597
Sydney Road	Whole length in Shire	·69	·69	·69	·69
PHILLIP ISLAND AND WOOLAMAI SHIRE—	Re-grading and metalling, Glen Alvie	1·13	1·13	1·13	1·13
Loch-Wonthaggi Road	Re-grading and metalling, near Buckley's ..	·62	·62	·62	·62
Korumburra-Wonthaggi Road	Re-grading and metalling, near Beard's ..	·51	·51	·51	·51
Dalyston-Wonthaggi Road	Construction of reinforced concrete pipe culvert and approaches	·05	·05	·05	·05
Main Coast Road	Fencing Deep Creek deviation	·59	·59	·59	·59
PORTLAND SHIRE—	At Cashmore; continuation of previously metalled portion	1·23	1·23	1·23	..
Portland-Casterton Road	At Hotspur	1·26	1·26	1·26	1·26
PVALONG SHIRE—	At High Camp	506
ROCHESTER SHIRE—	2,182 feet south from Lockington Township; 2,182 feet east from Lockington Township ..	·82	·82	·82	..
Bendigo-Echuca Road	From Waranga-Mallee Channel north towards Echuca, 55,900·1 feet	10·59
RODNEY SHIRE—	2½ miles north of Merrigum	1·51	1·51
Tatura-Byrneside-Kyabram Road	At south end of road	·31	·31
Shepparton-Tatura Road	6 miles west of Mooroopna	·7	·7
Tatura-Murchison Road	Half-a-mile north of Tatura	·43	·43	·43	·43
RUTHERGLEN SHIRE—	Improving turn, Kelly's Corner	·06	·06
Yarrowonga Road	Forming and gravelling Fuge's Bridge to O'Dea's	·55	·55	·55	·55
SEYMOUR SHIRE—	2,640 feet sheeting on Maher's Hill	·5	·5	·5	·5
Sydney Road	Reinforced concrete pipe culvert at Parker's ..	·01	·01	·01	·01
Upper Goulburn Road	Reinforced concrete pipe culvert at Trawool, near Patterson's	·01	·01	·01	..
Goulburn Valley Road	Forming, gravelling, and culverts near Newn- ham's, Mangalore	1·5	1·5	1·5	1·5
"	Forming and gravelling near Lobb's, Mangalore, including culverts	·29	·29	·29	..
SHEPPARTON SHIRE—	South of Broken River	1·84	1·84	Carried out by day labour	
Shepparton-Nagambie Road	Between Nathalia Road and Congupna Road railway station	1·74	1·74	1·27	1·27
Dookie-Nalinga Road	East of railway	1·01	1·01	1·01	1·01
From Cashel to Gentle Annie Hill	1·21	1·21
SOUTH GIPPSLAND SHIRE—	Thompson's to Boolarong	4	4
Dollar-Stony Creek Road	Sinclair's Saddle to the Creek	1·53	1·53
Toora-Gunyah Road	Toora-Tin Creek	2·57	2·57
STAWELL BOROUGH—	London Road, Stawell	1·13	1·13
STAWELL SHIRE—	Parish of Stawell	·6	·6	·6	·6
SWAN HILL SHIRE—	Through Nyah Settlement	2·2	2·2	2·2	..
Elston Road	West of Lalbert Creek	2·14	2·14
TOWONG SHIRE—	Concrete bridge near Eskdale—length ·02 miles
TUNGAMAH SHIRE—	East of St. James railway station—completed ..	4	4	4	4
UPPER MURRAY SHIRE—	Between Corryong and Colac Colac	Four R.I. culverts
Corryong Road
Carried forward	138·404	126·369	100·764	95·882

PARTICULARS OF SURVEYS, ETC., ON ROADS DECLARED MAIN ROADS, ETC.—*continued.*

Name of Municipality and Name of Road.	Locality of Works.	Lengths of Roads.			
		For which Permanent Surveys have been Made.	For which Plans have been Prepared.	For which Tenders have been Invited.	For which Tenders have been Accepted.
		Miles.	Miles.	Miles.	Miles.
UNDER MUNICIPALITIES—<i>continued.</i>					
	Brought forward	138·404	126·360	100·764	95·882
WALPEUP SHIRE—					
Ouyen—Pinaroo Road ..	Between Ouyen and Murrayville	8·55	8·55	2·70	2·70
Ouyen—Mildura Road ..	Between Ouyen and Kia	·61	·61
Ouyen—Sea Lake Road ..	Between Nunga and Shire boundary	·81	·81	·81	·81
WANGARATTA BOROUGH—					
Sydney Road	Between 16,300 and 16,800 feet for re-building of Tutty's Bridge	·094
WARANGA SHIRE—					
Colbinabbin—Corop Road ..	2 miles north of Colbinabbin East Township	1·05	1·05	1·05	1·05
Heathcote—Elmore Road ..	Bridge over Mount Pleasant Creek	Bridge and ·06	Bridge and ·06	Bridge and ·06	Bridge and ·06
WARRAGUL SHIRE—					
Warragul—Korumburra Road ..	Between Gourley's and Shire boundary	3·19	3·19	3·19	1·32
WERRIBEE SHIRE—					
Prince's Highway	Werribee
WHITTLESEA SHIRE—					
Whittlesea—Kinglake Road ..	6th and 7th Sections—Scrubby Creek deviation	1·92	..
Whittlesea—Wallan Road ..	Black Flat, Whittlesea Coffee Palace	·78	..
WIMMERA SHIRE—					
Horsham—Natumuk Road ..	South of A Walmer P.R., Parish of Vectis East	1·08	1·08	1·08	1·08
Horsham—Wal Wal Road ..	Between Lots 4 and 27-30, Parish of Drug	·5	·5	·5	·5
Horsham—Dooen Road ..	Between Lot 60 and Dooen Swamp, Parish of Dooen	·53	·53	·53	·53
Horsham—Wal Wal Road ..	Between Lots 55 and 56, Parish of Bungalally	·5	·5
WYCHEPROOF SHIRE—					
Wycheproof—Sea Lake Road ..	Near Wycheproof, near Nullawil, near Culgoa, near Berriwillock, near Sea Lake	3·59	3·59	3·59	3·59
Wycheproof—Birchip Road ..	Near Tchum Lakes	1	1	1	1
Sealake—Ouyen Road ..	North of Sea Lake—clearing and grubbing	3·5	3·5	3·5	3·5
Sea Lake—Ultima Road ..	East of Sea Lake	·37	·37	·27	·37
YACKANDANDAH SHIRE—					
Dederang Road	Glen Creek Hotel to Briggs	2·08
" " " "	Briggs' to Ivers'	1·13	1·13
" " " "	End of metal at Beatty's to Sullivan's	·87	·22	·22	·22
" " " "	Yackandandah to Kinchington's Creek Bridge	3·96	3·96
Gundowring Road	Springvale (Closer Settlement) Section	1·81	1·81
Yackandandah—Wodonga Road ..	Three-span R.C. box culvert near Jamieson's	R.C. culvert	R.C. culvert
" " " "	Near junction Allan's Flat Road to Thomas'	·35	·35	·35	·35
" " " "	Yackandandah to Bash Creek Bridge
" " " "	Stephens' Hills deviation
YARRAWONGA SHIRE—					
Cobram—Yarrowonga Road ..	Re-forming and metalling from western end of Contract 1P 17-18 to Pierce's Corner	·64	·64
YEA SHIRE—					
Upper Goulburn Road ..	Between Yea and Cotton's Pitch	1·5	1·5
Yea—Glenburn Road ..	Bridges, &c., near Loan's—in course of construction	·16	·16	·16	·16
	Totals	171·608	157·229	126·854	117·402
UNDER DIRECT SUPERVISION OF BOARD.					
ALBERTON AND MORWELL SHIRE—					
Boolarra—Welshpool Road ..	Swan's and Savage's Hills	1·6	1·6	1·6
ALEXANDRA SHIRE—					
Healesville—Alexandra Road ..	Reinforced concrete culvert at Little's in Township of Alexandra
AVON SHIRE—					
Prince's Highway	Timber bridge over Avon River	·2
BACCHUS MARSH SHIRE—					
Ballarat Road	Reinforced concrete bridge over Myrning Creek	·007
Geelong—Bacchus Marsh Road ..	Concrete and steel bridge over Werribee River	·016
CHARLTON SHIRE—					
Bendigo Road	Reinforced concrete bridge over Avoca River	·04
CRANBOURNE SHIRE—					
Main Coast Road	Bridge protection, Tooraddin
" " " "	Reinforced concrete bridge, Main Canal	·03	·03	..
" " " "	Reinforced concrete bridge, south-east Catch Drain	·002	·002	·002
" " " "	Reinforced concrete bridge, Main Canal	·02	·02	..
" " " "	Reinforced concrete bridge, south Boundary Drain	·005	·005	·005
HAMPDEN SHIRE—					
Prince's Highway	Reinforced concrete bridge over Emu Creek	·03	·03	·03
HUNTLY AND WARANGA SHIRE—					
Heathcote—Elmore Road ..	Steel, concrete, and timber bridge over Campaspe River	·03	·03	·03
KEILOR SHIRE—					
Bendigo Road	Reinforced concrete bridge at Jackson, Keilor	·02
LILYDALE SHIRE—					
Mount Dandenong Road ..	Metalling Kilsyth, Montrose	1·38	1·38	1·38	1·38
MULGRAVE SHIRE—					
Ferntree Gully Road	Box Hill Road to Dublin Road	·25	·25
RUTHERGLEN SHIRE—					
Chiltern—Howlong Road ..	Reinforced concrete bridge over the anabranch of the Murray River	·005
SOUTH BARWON SHIRE AND GEEELONG CITY—					
Prince's Highway	Steel and concrete bridge over Barwon River	·3	·3	..
TAMBO SHIRE—					
Nowa Nowa—Buchan Road ..	Reinforced concrete culvert at Ironstone Creek
TOWONG SHIRE—					
Oneco Road	Reinforced concrete bridge at Polmears	·002	·002	·002
TULLAROOP SHIRE—					
Castlemaine—Maryborough Road ..	Reinforced concrete bridge over Deep Creek	·2	·2	..
VIOLET TOWN SHIRE—					
Sydney Road	Reinforced concrete bridge at One Mile Creek	·005	·005	·005
WOORAYL SHIRE—					
Mardan Road	Reinforced concrete bridge and culverts, Tarwin River	·03
WODONGA SHIRE—					
Sydney Road	Two reinforced concrete culverts over the Murray Flats	·1
YEA SHIRE—					
Upper Goulburn Road ..	Reinforced concrete culverts near Yea River
	Totals	1·63	4·272	3·604	3·054

APPENDIX G.

COUNTRY ROADS BOARD.

STATEMENT SHOWING MILEAGE AND LOCALITY OF WORKS CONSTRUCTED AND ROADS MAINTAINED DURING THE YEAR ENDED 30th JUNE, 1923.

Name of Municipality and Road.	Particulars as to Locality of Works Constructed.		Mileage of Works Constructed.	
	Permanent Works.	Maintenance.	Permanent Works.	Maintenance.
			Miles.	Miles.
UNDER MUNICIPALITIES.				
ALBERTON SHIRE—				
Balook-Traralgon Road	Drysdale's Cutting to Balook Township	4
Carrajung-Gormandale Road	Yarram to Won Wron and Carrajung to Gormandale	17.5
Foster-Yarram Road	Metalling Curram's Flat	Shire boundary to Alberton	2.52	8
Sale-Yarram Road	Yarram to Monkey Creek (boundary)	28
Yarram-Boolarra Road	Yarram to Shire boundary at Gemmill's Hill	18.1
Yarram-Port Albert Road	Yarram to Alberton	4.6
ALEXANDRA SHIRE—				
Healesville-Alexandra Road	Near Riversdale Bridge
ARAPILES SHIRE—				
Horsham - Natimuk - Edenhope Road	2 miles west of Natimuk
ARARAT SHIRE—				
Ballarat-Hamilton Road	Metalling	General repairs and maintenance metal	64
Ararat-Warrnambool Road	General repairs over whole length	31
Maroona-Glenhompson Road	24
Ballarat-Stawell Road	General repairs and tarring of road	22
Ararat-Elmhurst Road	General repairs	24
AVOCA SHIRE—				
Ballarat-St. Arnaud Road	General maintenance over whole length	9
Bealiba Road	5
Ararat Road	6
Landsborough Road	Concrete drop only
Maryborough Road	General maintenance over whole length	5
Stawell Road
AVON SHIRE—				
Prince's Highway	General maintenance throughout
Sale-Maffra Road
Briarolong-Dargo Road
BACCHUS MARSH SHIRE—				
Geelong-Bacchus Marsh Road	Temporary bridge at Maddingley	Gravelling near Railway Bridge, Parwan	25
" " " "	Re-sheeting with metal and culvert—Contract 2P 18-19	17
Melbourne-Ballarat Road	Sheeting with quarry slack and gravel on Bacchus Marsh Flat	6
" " " "	Sheeting with metal between Lerderberg Bridge and Anthony's Cutting	1.125
" " " "	Anthony's Cutting, general repairs; and sheeting Deep Hill Creek	31
" " " "	Stamford Hill, west of Bacchus Marsh, general maintenance between Bacchus Marsh and Myrning	375
Gisborne Road	Sheeting in Township of Bacchus Marsh	437
" " " "	Between Lerderberg Bridge and Connadar, gravelled	5
BAINSDALE SHIRE—				
Bullumwaal-Tabberabbera Road	Dumont's to Sandhill	1.42	..
Prince's Highway	Tar paving, &c., Mitchell Bridge	10
BALLARAT SHIRE—				
Ararat Road	Metal sheeting between J. Mitchell's and Cardigan State school, and from Burrumbeet railway station east	89
Ballarat-Creswick Road	Metal sheeting between Brown's and the Ballarat-Waubra railway line	57
Ballarat-Lexton Road	Metal sheeting near Vaughan's, south of Fraser's Hill, near Bridgewater's south of Learmonth, and near Baird's north of Pound Hill	1.23
Maryborough-Ballarat Road	Metal sheeting on south side of Ballarat-Waubra railway line, and on north side of Ascot P.O.	86
BANNOCKBURN SHIRE—				
Inverleigh Road	Re-sheeting	3
Geelong-Ballarat Road	1
Shelford-Bannockburn Road	25
BARRARBOOL SHIRE—				
Anglesea Road	General maintenance throughout	17
Prince's Highway	13
Hendy Main Road	10
BEECHWORTH SHIRE—				
Stanley Road	3,200 feet, Stanley-Johnson's	Stanley Section	57
Beechworth Road	Section formed (but not metalled), Black Springs	Tarrowingee-Indigo Gap	49
Everton-Myrtleford Road	Everton-Myrtleford	12
Bright Road	Rocky Point Section in course of construction	Rocky Point-Everton-Myrtleford Road	83
BELFAST SHIRE—				
Prince's Highway (Portland Road)	Repairs, metalling	1.5
Prince's Highway (Warrnambool Road)	1
Hamilton Road	1.5
Penshurst Road	7
BELLARINE SHIRE—				
Geelong-Queenscliff Road	General maintenance throughout	15
Geelong-Portarlington Road	16
DENALLA SHIRE—				
Sydney Road	Six-span reinforced concrete culvert and approaches near Joyce's	General repairs from Baddaginnic to Glenrowan	32
Goorambat Road	General repairs from Benalla to Goorambat	11
Tatong Road	General repairs from Tatong to Dodd's Crossing	6
Greta Road	General repairs from Quarry to Sydney Road	6
BERWICK SHIRE—				
Prince's Highway	Between Beaconsfield and Pakenham	Between Dandenong and Hallam	1.4
" " " "	Between Narre Warren and Berwick	45
" " " "	Between Beaconsfield and Officer	61
		Carried forward	9.080	380.817

STATEMENT SHOWING MILEAGE AND LOCALITY OF WORKS CONSTRUCTED, ETC.—*continued.*

Name of Municipality and Road.	Particulars as to Locality of Works Constructed.		Mileage of Works Constructed.	
	Permanent Works.	Maintenance.	Permanent Works.	Maintenance.
			Miles.	Miles.
UNDER MUNICIPALITIES—<i>continued.</i>				
		Brought forward	9·060	389·817
BET BET SHIRE—				
Betley Road		Re-sheeting Broadway, Dunolly		·25
Avoca-Bealiba Road		Formation at Bromley		·2
BIRCHIP SHIRE—		General maintenance		
Donald-Birchip-Sea Lake Road ..	In Birchip Township, north from Town boundary		1·5	
Beulah-Birchip-Wycheproof Road	East from Birchip Town boundary		1·04	
BORUNG SHIRE—				
Rainbow Road		Forming and claying		·06
Minyip Road		Grubbing		4
Hopetoun Road	Metalling, forming, &c.	Forming, &c.	1·13	1·06
BRAYBROOK SHIRE—		"		·88
Ballarat Road		General maintenance throughout		11·5
BRIGHT SHIRE—				
Bright Road		General repairs		20
Harrierville Road		"		16
BROADFORD SHIRE—				
Sydney Road		General repairs over whole length		8
BROADMEADOWS SHIRE—				
Sydney Road		General patching and sheeting throughout (except section Coburg boundary to Camp Road)		
Lancefield Road		General maintenance		
BULLA SHIRE—				
Melbourne-Lancefield Road		From Tullamarine to Lancefield Junction		15
Sunbury Road		From junction with Melbourne-Lancefield Road to Sunbury Township		2·5
BULN BULN SHIRE—				
Prince's Highway		Sheeting and gravelling at Longwarry		·5
Neerim "B" Road		Sheeting old metal near Drouin		·25
BUNGAREE SHIRE—				
Ballarat Road		Near Bungaree Township		·47
Daylesford-Ballarat Road		Near Wallace—re-sheeting		·18
Ballarat-Creswick Road		Between Gong Gong and Pootilla in sections—re-sheeting		·32
BUNINYONG SHIRE—		At Ballarat end of road—re-sheeting		·27
Ballarat Road	Cutting embankment and re-grading at Walsh's Hill	East of Woodman's Hill—sheeting with metal	·33	·32
Geelong-Ballarat Road		Repairing pot holes, Woodman's Hill to Bungaree		4·5
" " " "		At Clarendon		·3
" " " "		East of Scotsburn at Scott's Creek		·42
" " " "		East of old Buninyong Borough boundary		·67
" " " "		On Mount Buninyong Hill		·46
" " " "		Half-way between Ballarat and Buninyong		·31
" " " "		Large reinforced concrete culvert at Buninyong		
CARRUM BOROUGH—				
Point Nepean Road		Between Mordialloc and Carrum		5·68
CASTLEMAINE BOROUGH—				
Melbourne-Bendigo Road		General repairs		2·5
CHARLTON SHIRE—				
Donald Road	From 25,600 to 28,600 feet continuous chainage		·57	
Wycheproof Road	From 11,000 to 13,800 feet on continuous chainage		·53	
CHILTERN SHIRE—				
Chiltern-Howlong Road		Generally throughout		7·12
Rutherglen-Wodonga Road		"		6·7
Sydney Road		"		17·06
CORIO SHIRE—				
Prince's Highway	Deviation at North Geelong	Little River to Geelong (part by Board)	·25	11·5
Ballarat Road		Geelong to Batesford		4·5
Geelong-Bacchus Marsh Road		Melbourne Road to Lara		7·62
CRANBOURNE SHIRE—				
Koo-wee-rup-Pakenham Road	Forming and metalling		3·033	
Lang Lang-Nyora Road	Gravelling		1·087	
Westernport Road	Erection of 20-ft. span timber bridge	Forming and metalling		·25
Main Coast Road		Sheeting		2
CRESWICK BOROUGH—				
Ballarat-Castlemaine Road		Re-metalling near Lake		·25
" " " "		Re-gravelling Albert Street and by Presbyterian Church		·25
" " " "		Tar-painting Albert Street		·2
CRESWICK SHIRE—				
Ballarat-Castlemaine Road		Re-sheeting with metal at Forest Hill, between Kingston and Smeaton, and north of Smeaton Church		·57
" " " "		Re-sheeting with gravel sections between Sulky Gully and Creswick Borough, and from Borough to Coffey's Corner		·35
Daylesford-Ballarat Road		Re-sheeting with metal between Newlyn and Scrub Hill, and at Mount Prospect		·56
DANDENONG SHIRE—				
Prince's Highway		Between Springvale and Dandenong		5
Cheltenham Road		Between West Boundary Road and Prince's Highway		6
DAYLESFORD BOROUGH—				
Ballarat-Daylesford Road		General maintenance		·44
Ballan-Daylesford Road		"		1·19
Hepburn-Daylesford Road		"		1·13
Castlemaine-Daylesford Road		"		·6
Malmsbury-Daylesford Road		"		1·45
DEAKIN SHIRE—				
Kyabram-Roehester Road		Forming and gravelling at A. McDonald's		·75
Kyabram-Tongala Road		Forming and gravelling at Clayton's, and 1 mile south of Tongala		1·02
Kyabram-Nathalia Road		Forming and gravelling 3 miles north of Kyabram		·5
DIMBOOLA SHIRE—				
Nhill Road	Between Gerang and Kiata		1·45	
Warracknabeal Road		Near Dimboola		·24
Rainbow Rises Road		Near Pilla Bridge over Outlet Creek		·07
DONALD SHIRE—				
Donald-Charlton Road	8 miles north-east of Donald	Extending over 6 miles	1·14	(Approx.) 3
St. Arnaud-Birchip Road		Extending over 4 miles		(Approx.) 1
		Carried forward	21·120	567·737

STATEMENT SHOWING MILEAGE AND LOCALITY OF WORKS CONSTRUCTED, ETC.—*continued.*

Name of Municipality and Road.	Particulars as to Locality of Work Constructed.		Mileage of Works Constructed.	
	Permanent Works.	Maintenance.	Permanent Works.	Maintenance.
			Miles.	Miles.
UNDER MUNICIPALITIES—<i>continued.</i>				
		Brought forward	21·120	567·737
DUNDAS SHIRE—				
Hamilton—Dunkeld Road	At from 4½ to 5 miles from Hamilton, Parish of South Hamilton	..	·25
Hamilton—Horsham Road	At from 2¼ to 2¾ and 17½ to 19½ miles from Hamilton, Parishes of North Hamilton, Cavendish, and Mooralla	..	1·14
Hamilton—Mount Gambier Road	At from 2¼ to 2¾ and 8¼ to 9½ miles from Hamilton, Parishes of North Hamilton and Bochara	..	1·16
Hamilton—Warrnambool Road	At from 6 to 6½ and 6½ to 7¼ miles from Hamilton. Parishes of South Hamilton and Croxton	..	·625
Hamilton—Port Fairy Road	At from 15¾ to 16½, 17 to 17½, 18¾ to 19, and 20 to 20¼ miles from Hamilton, Parishes of Byaduk and Warrakook	..	1·55
Hamilton—Portland Road	At from 2¼ to 2¾ and 5 to 5½ miles from Hamilton, Parishes of South Hamilton and Yulecart	..	·54
DUNMUNKLE SHIRE—				
Rupanyup—Murtoa Road	Construction of metal road west of Rupanyup	General maintenance	2·5
Minyip—Donald Road	Construction of metal road	Gravelled roadway and metalling	·4	1
Stawell—Warracknabeal Road	Completion of re-laying Main Street, Minyip ..	·5	·22
..	Re-forming north of Rupanyup	·6	0·5
..	Gravelling north of Rupanyup—incomplete	·4
..	Clearing and forming, adjoining Stawell Shire boundary	..	·68
EAST LODDON SHIRE—				
Prairie Road	Metalling—in progress	General maintenance	·25	2
Dingee Road	Metalling	·67	..
Mitlamo Road	General maintenance	2
ELTHAM SHIRE—				
Eltham—Yarra Glen Road	Special culvert erected at Christmas Hills	General repairs over whole length	21
Balee—Hurstbridge—Kinglake Road
EUROA SHIRE—				
Sydney Road	Formation, pipe culverts, graveling, &c., from Shire boundary at Longwood to Creighton Creek	3·478	..
FERNTREE GULLY SHIRE—				
Monbulk Road	Between Belgrave and "Hiawatha"	Between Belgrave and Monbulk	·38	5
Main Ferntree Gully Road	Between Belgrave and Wheeler's Hill	10·81
Olinda Road	Between Upper Ferntree Gully and Olinda	6·25
FLINDERS SHIRE				
Hastings—Flinders Road	Manton's Creek to Flinders	1·25
Dromana Road	In Dronana	·38
Dromana—Sorrento Road	Rosebud to Boneo Corner, and near Tootgarook	..	1·3
Mornington—Flinders Road	Wiseman's deviation	·9
FRANKSTON AND HASTINGS SHIRE—				
Point Nepean Road	Between Hunphries Road and Shire boundary	Between Carrum and Oliver's Hill	1·80	2·85
.. .. .	Nyora Corner at south boundary	·09	..
Mornington—Tyabb Road	Between Tyabb and Mornington	·6	..
Baxter—Pearcedale Road	Between Baxter railway station and east boundary	·2	..
Moorooduc—Somerville Road	Between Somerville and east boundary	2·25	..
Seaford Road	Between Point Nepean Road and Frankston—Dandenong Road	·04	..
Frankston—Dandenong Road	On Cranbourne Shire boundary	·38	..
GISBORNE SHIRE—				
Melbourne—Bendigo Road	Between 37 and 39 miles	General maintenance	·8	11·02
Melbourne—Bendigo Road (joint with Bulla Shire)	3·62
Melbourne—Bendigo Road (joint with Newham and Woodend Shire)	·66
Gisborne Station Road	1·12
Gisborne—Bacchus Marsh Road	10·18
GLENELG SHIRE—				
Wando Vale Road	Forming and gravelling between 8,700 and 10,096 feet pegs	300 cubic yards maintenance gravel	·264	..
Coleraine Road	Forming and gravelling between 10,979 and 23,753 feet pegs near the Lodge	·715	..
Mount Gambier Road	Forming and metalling between 132,530 and 135,500 feet pegs near Ardno	·562	..
.. .. .	Forming and gravelling between 72,975 and 83,810 feet pegs	500 cubic yards maintenance gravel	1·749	..
Dergholm Road	1,140 cubic yards maintenance gravel
GLENLYON SHIRE—				
Castlemaine—Daylesford Road	Thirteen culverts re-decked	Metal re-constructed	5·5	·85
Malmesbury—Daylesford Road	·80
Hepburn Road	1
GOULBURN SHIRE—				
Goulburn Valley Road	Gravelling and metalling	·5
Sydney Road	Formation and draining	·6
GRENVILLE SHIRE—				
Ballarat—Hamilton Section "A" Road	Supply of bluestone spalls, and crushing, grading, and rolling from 4th to 6th Mile	..	·4
..	Supply of quartz metal and blinding between Smythesdale and 7th Mile	..	·4
Ballarat—Hamilton Section "B" Road	Supply of quartz at Scarsdale	·25
..	Supply of quartz at 4th Mile	·3
..	Supply of quartz at Cherry Hill	·25
..	Supply of quartz at Pittong	·20
..	Supply of quartz at Newtown	·25
Pitfield Road	Supply of bluestone spalls, crushing, spreading, and rolling at Mayhew's	..	·3
..	Supply of quartz between Cape Clear and Geelong Road	..	·3
HAMILTON BOROUGH—				
Ararat Road	Maintenance metal spread	·237
Coleraine Road	·187
Port Fairy Road	·037
Portland Road	Maintenance gravel spread	·112
Warrnambool Boundary Road (joint with Dundas Shire)	Maintenance metal spread	·075
		Carried forward	42·438	671·690

STATEMENT SHOWING MILEAGE AND LOCALITY OF WORKS CONSTRUCTED, ETC.—*continued.*

Name of Municipality and Road.	Particulars as to Locality of Works Constructed.		Mileage of Works Constructed.	
	Permanent Works.	Maintenance.	Permanent Works.	Maintenance.
			Miles.	Miles.
<i>UNDER MUNICIPALITIES—continued.</i>				
LEXTON SHIRE—		Brought forward	51·677	1023·220
Ballarat—Avoca Road	Between Lexton and Wambra—general repairs over whole length	..	9
Ararat—Avoca Road	West of Amphitheatre—general repairs	2
LILYDALE SHIRE—				
Main Healesville Road	Re-sheeting Bent's Hill, tar spraying, and general maintenance	..	13
Ringwood—Warrandyte Road ..	Metalling and grading to Wonga Road	General maintenance with metal—various sections	·51	1·32
Mount Dandenong Road	6·27
Main Warburton Road	Forming, fencing, and metalling Seville deviation	·87	8·5
Yarra Glen Road	2·11
Monbulk Road	Metalling Houghton and McGiver's Contract	·96	6·18
LOWAN SHIRE—				
Dimboola—Kaniva Road	Between 2, Balrootan, and Racecourse	General maintenance	1·27	1·65
Lorquon West Road	Between 10, 9, and 6, Lorquon	·72	·58
Yanac Road	Between 158 and 157, &c., Tarranginnie	·98	·81
MAFFRA SHIRE—				
Sale Road	From Maffra to Shire boundary—supply and spreading of gravel	..	7
Tinamba—Newry Road	General maintenance	3
Tinamba—Boisdale Road	Supply and spreading of gravel	12
Heyfield—Licola Road	Fencing Blanket Hill deviation ..	General maintenance	21
Dargo Road	3
Bushy Park—Valencia Creek Road	8
MALDON SHIRE—				
Castlemaine—Maldon Road	Maldon—sheeting with metal	·35
Baringhup Road	General repairs	10
Newstead Road	6
Eddington Road	4·5
MANSFIELD SHIRE—				
Toimie Road	Bridge over Broken River ..	General maintenance and repairs ..	·03	6
" "	Fillings over culvert at 2 miles	·03	..
" "	Clearing, grubbing, and formation
" "
Mansfield Road	Metalling	General maintenance and repairs ..	·17	37
Jamieson Road	Dismantling and re-erection of Muddy Creek Bridge at Doon	13
Mansfield—Wood's Point Road	10
Merton—Euroa Road	4
MARONG SHIRE—				
Bendigo—Melbourne Road	General maintenance—metalling	5
Bendigo—Eddington Road	General maintenance—metalling and gravelling	..	24·85
Bendigo—Bridgewater Road	General maintenance—metalling	21·6
Bendigo—Serpentine Road	8·8
MARYBOROUGH BOROUGH—				
Avoca Road	Re-sheeting metal	·1
Ballarat Road	Repairs	·65
Castlemaine Road	Re-sheeting metal	·1
MELTON SHIRE—				
Ballarat Road	Rockbank to Melton	11
Toolern Road	Between Melton and Toolern	6
Bendigo Road	General maintenance	5·13
Bendigo Road (joint with Bulla Shire)	2·62
METCALFE SHIRE—				
Kyneton—Redesdale Road	General repairs—day labour
Melbourne—Bendigo Road
MILDURA SHIRE—				
Irymple Road	Sandalong to Irymple Avenue (under construction)	Deakin to Sandalong Avenue	2
" "	Between Karadoc and Koorlong Avenues	·62	·25
Wentworth Road	Cowanna Avenue to 15th Street	3·25
Deakin Avenue	14th to 15th Streets	·66
MILDURA TOWN—				
Deakin Avenue	10th to 12th Streets inclusive	·284	..
Langtree Avenue	7th to 8th Streets inclusive	·121	..
MINHAMITE SHIRE—				
Hamilton—Macarthur—Port Fairy Road	Re-sheeting with metal	1·66
Penshurst—Hawkesdale—Warrnambool Road	·75
MIRBOO SHIRE—				
Mirboo South Road	Main Street, North Mirboo	·37
Mirboo—Allambee East	General maintenance over whole length	..	2
Mirboo South Road	1
MOORABBIN SHIRE—				
Point Nepean Road	Point Nepean, Moorabbin, and Cheltenham	3·19
Centre Dandenong Road	Centre Dandenong, Cheltenham	2·96
MORDIALLOC TOWN—				
Point Nepean Road	Full length within town—surface tar-painted throughout and covered with stone screenings or sand; flanks of part of road re-built and raised so as to reduce cross curvature	..	2·6
MORNINGTON SHIRE—				
Point Nepean Road	Surfacing with bitumen	Surfacing with bitumen	3·4	5
MORTLAKE SHIRE—				
Mortlake—Terang Road	Between Mortlake and 2 miles, and 5 and 6 miles	..	1·37
Mortlake—Ararat Road	Between Mortlake and 1 mile, 4 and 5 miles, and 11 and 13 miles	..	1·54
Mortlake—Warrnambool Road	Between Mortlake and 2 miles, 5 and 6 miles, and 12 and 14 miles	..	1·19
MORWELL SHIRE—				
Prince's Highway	Sanding Morwell—Traralgon section	Generally throughout	·82	10
Jeeralang West Road	Forming and sanding Hazelwood	1·72	18·5
Boolarra—Foster Road	13
Boolarra—Welshpool Road	20
MOUNT ROUSE SHIRE—				
Ballarat—Hamilton Road	Between Dunkeld and 2 miles east of Glen Thompson	..	1·1
Hamilton—Dunkeld Road	Between Dunkeld and 3-mile post	·43
Hamilton—Penshurst Road	Between Penshurst and 8-mile post north and Penshurst and 1-mile post south	..	·5
Penshurst—Caramut Road	Between Penshurst and 9-mile post	1·39
Carried forward			64·182	1420·450

STATEMENT SHOWING MILEAGE AND LOCALITY OF WORKS CONSTRUCTED, ETC.—*continued.*

Name of Municipality and Road.	Particulars as to Locality of Works Constructed.		Mileage of Works Constructed.	
	Permanent Works.	Maintenance.	Permanent Works.	Maintenance.
			Miles.	Miles.
UNDER MUNICIPALITIES—<i>continued.</i>				
		Brought forward	64·182	1420·450
MULGRAVE SHIRE— Fernree Gully Road	General repairs	1
MCIVOR SHIRE— Kilmore-Heathcote-Bendigo Road	General repairs, re-forming, and bridge repairs, &c.	18
Heathcote - Redesdale - Kyneton Road	General repairs, including re-decking Wilk Duck Creek Bridge	12
Heathcote-Elmore Road	Re-constructing two bridges, gravelling, and general repairs	12
NARRACAN SHIRE— Prince's Highway	General maintenance over whole length (including 3·19 miles re-sheeting between Yarragon and Trafalgar)	17
Yarragon-Shady Creek Road	General maintenance over whole length	3
Yarragon-Leongatha Road	" " " " " "	8
Trafalgar-Thorpdale Road	Metalling between Wilson's turn-off and Narracan turn-off (practically completed)	3·85	8
" " " " " "	Fencing similar section
Trafalgar-Willowgrove Road	General maintenance over whole length	11·5	7
Walhalla Road	" " " " " "	16
NEWHAM AND WOODEND SHIRE— Melbourne-Bendigo Road	Generally throughout	9
Lancefield Road	" " " " " "	9
Tylden Road	" " " " " "	4
NEWSTEAD AND MOUNT ALEXANDER SHIRE— Castlemaine-Daylesford Road	Five sections—Vosti's Hill, near Jubilee, Moeri's to Guildford, 5-Mile Flat, and near Winkelman's—re-sheeted with gravel	·72
Castlemaine - Maryborough Road	Extra approach to Joyce's Creek Bridge (joint with Tullaroop Shire)	Approach	·52
Creswick Road	Two sections—Muckleford and Newstead to Joyce's Creek—re-sheeted with gravel
Maldon Road	Near McNab's, Newstead—re-sheeted with gravel	·31
	Near Welshman's Reef—re-sheeted with gravel	·24
NUMURKAH SHIRE— Numurkah-Nathalia Road	Between Nathalia railway station and Broken Creek	·1	15
Shepparton - Numurkah - Cobram Road	" " " " " "	21
Numurkah-Tungamah Road	" " " " " "	5
Echuca-Pirola Road	" " " " " "	15
Nathalia-Kyabram Road	" " " " " "	12·75
NUNAWADING SHIRE— Main Healesville Road	Re-sheeted—·00 to 2,500 feet; 8,600 to 9,000 feet. General maintenance—18,004 feet	4·15
OAKLEIGH BOROUGH— Fernree Gully Road	Telford pitching	·15	..
Prince's Highway	Small patching and tar painting	·5
OMEQ SHIRE— Bruthen-Omeo Road	Between Omeo and Ramrod Creek (excepting Mount Ash)	57
Benambra Road	Between Omeo and Benambra	10
Glen Wills Road	Between Omeo and Sunnyside	32
Mountain Ash Road	Between Ramrod Creek and Shady Creek	10
ORBOST SHIRE— Prince's Highway	From Newmerella Post Office to Brodribb River	10·10
Marlo Road	From Snowy River Bridge to Conlon's Corner	9·5
Cann Valley Road	Construction of two 10-ft. span culverts; maintenance of whole road from Prince's Highway to Fiddler's Green Creek	18
OTWAY SHIRE— Forrest-Apollo Bay Road	Fencing	·58	22
Beech Forest-Apollo Bay Road	Forming and grading Devil's Elbow	1·02	..
Princetown Road	General maintenance	15·5
Cobden-Port Campbell-Princetown Road	" " " " " "	2·1
Glenahre-Laver's Hill Road	" " " " " "	4
OXLEY SHIRE— Glenrowan-Greta Road	Deviation at Glenrowan under construction	·597	3·1
PHILIP ISLAND AND WOOLAMAI SHIRE— Main Coast Road	Fencing, Deep Creek deviation	·59	19
" " " " " "	Formation and metalling, Deep Creek deviation	·57	..
Loch-Wonthaggi Road	Formation and metalling, near Tschudy's	·56	16·8
Korumburra-Wonthaggi Road	Formation and metalling, near Beard's	·51	3·25
Almurta Road	" " " " " "	5·2
Wonthaggi-Inverloch Road	" " " " " "	4
Dalyston-Wonthaggi Road	Construction reinforced concrete pipe culvert and metalling approaches at Dalyston	·05	2·1
PORT FAIRY BOROUGH— Prince's Highway	Repairs (Portland)	·3
" " " " " "	Tar painting (Warrnambool)	2·61
Hamilton Road	Repairs	·3
PORTLAND SHIRE— Prince's Highway	400 cubic yards spalls at North Portland	·5
" " " " " "	200 cubic yards spalls at Allestree	·22
Heath Road	200 cubic yards spalls at West Portland	·22
Portland-Casterton Road	200 cubic yards gravel between Hotspur and Digby	·22
RIPON SHIRE— Ballarat-Ararat Road	Enrambeen	1
Ballarat-Ararat Road (joint with Ripon and Lexton Shires)	East from Trawalla	2
Skipton Road	At Lake Goldsmith	·15	2
Ballarat-Hamilton Road	Repairs—north end	·5
Ballarat-Hamilton Road (joint with Ripon and Hampden Shires)	Repairs—south end	·5
	General maintenance	5
	Reconstruction of bridge completed
		Carried forward	83·409	1878·160

STATEMENT SHOWING MILEAGE AND LOCALITY OF WORKS CONSTRUCTED, ETC.—continued.

Name of Municipality and Road.	Particulars as to Locality of Works Constructed.		Mileage of Works Constructed.	
	Permanent Works.	Maintenance.	Permanent Works. Miles.	Maintenance. Miles.
UNDER MUNICIPALITIES—continued.				
		Brought forward	95·970	2250·985
TALBOT SHIRE— Maryborough-Ballararat Road	Sheeting Ballarat Street Section with metal and blinding same and making up water tables; maintenance repairs to various bridges and culverts	..	·25
Maryborough-Avoeca Road	Stoning up drain at edge of embankment at reinforced concrete culvert at Bung Bong; cleaning drains, &c.
TAMBO SHIRE— Bairnsdale-Bruthen Road	Within Township of Bruthen	Sarsfield to Dirty Hollow	·54	4
Nowa Nowa - Buchan - Gelantipy Road	Flour-bag Hill to Buchan, and Buchan to Gelantipy	..	12
Prince's Highway	Nicholson River to Swan Reach	4
TOWONG SHIRE— Oneco Road	Swan Reach to Baker's Crescent, Lakes Entrance	..	4
TRARALGON SHIRE— Prince's Highway	Concrete bridge (partly completed)
Gornandale Road	General repairs, blinding, &c., Morwell Section	..	3
TULLAROOP SHIRE— Avoeca Road	General repairs, blinding, &c., Rosedale Section	..	1·5
Ballararat Road	Gravelling	1
Castlemaine Road	Supply of ironstone spalls	·25
Eddington Road	Supply of bluestone spalls	·25
Natte Yallock Road	Reinforced concrete pipe and supply of ironstone	..	·1
TUNGAMAH SHIRE— St. James Road	East of St. James station	Re-decking bridge and supply of ironstone	..	·25
UPPER MURRAY SHIRE— Tintaldra Road	Between Cudgewa railway station and Cudgewa State School—forming, gravelling culverts	Between Cudgewa railway station and Tintaldra	·72	14
Copyong Road	Commencing at Cudgewa railway station and terminating at Colac Colac Creek—forming, metalling, and culverts	Between Colac Colac Creek and Murray River	3·02	12
.. ..	Bridge over Colac Colac Creek; two 6 feet x 4 feet concrete reinforced culverts $\frac{1}{2}$ miles east of Cudgewa railway station	·033	..
VIOLET TOWN SHIRE— Shepparton Road	Repairing gravelled parts	4
Sydney Road	Minor repairs	1
Violet Town-Dookie Road	Repairing gravelled parts	5
WALPEUP SHIRE— Ouyen-Pinaroo Road	Between Ouyen and Murrayville	Between Murrayville and South Australian Border	2·70	5·62
Ouyen-Sea Lake Road	Between Ouyen and Shire boundary	..	1·18
Ouyen-Mildura Road	Between Ouyen and Kiamal	Between Ouyen and Kiamal	·61	·7
WANGARATTA BOROUGH— Sydney Road	Construction of concrete bridge over 1-Mile Creek and approaches	·170	..
WANNON SHIRE— Hamilton-Casterton Road	1,700 cubic yards metal near Western boundary	..	1·25
Coleraine-Harrow Road	General maintenance	14
..	500 cubic yards metal between 2 and 3 mile pegs	..	·5
Wannon Bridge Road	General maintenance	34
..	360 cubic yards metal in Coleraine Township	..	·25
WARANGA SHIRE— Colbinabbin-Elmore Road	At Colbinabbin East Township	General maintenance	6
..	Between Colbinabbin and Colbinabbin West	·42	1
..	Between Colbinabbin East and Colbinabbin	·51
Colbinabbin-Corep Road	2 miles north of Colbinabbin East Township	Near Runnymede	·38
Heathcote-Elmore Road	Bridge over Mount Pheasant Creek	1·05	..
Murchison-Rushworth Road	Near Runnymede	Bridge and	·05
WARRAGUL SHIRE— Brandy Creek Road	Metalling through Rokeby Township	Near Rushworth	·42
Prince's Highway	·53	..
WARRNAMBOOL SHIRE— Prince's Highway	West and east of Warragul	·8
..	Allansford-Warrnambool City	4
Mortlake-Warrnambool Road	Warrnambool City-Belfast Shire boundary	7·5
Allansford-Nirranda Road	Allansford-Hampden Shire boundary	16
Garvoc-Laang Road	Mortlake Shire to Warrnambool City boundary	..	15·5
..	Allansford to Nirranda	16
..	Garvoc to Laang	4·5
WERRIBEE SHIRE— Prince's Highway	Werribee Township Section	·99
WHITTLESEA SHIRE— Epping-Woodstock Road	From Woodert to Woodstock—tarring, first coat	General maintenance from Preston boundary to Woodert	4	6·5
Whittlesea-Kinglake Road	Whittlesea railway station to Jack's Creek turn-off—bitumen	..	3
Main Whittlesea Road	Morang to Mernda—bitumen coating	2·12
..	Morang Hotel towards Janefield—tarring	·7
..	General maintenance from Janefield to Whittlesea Township
WIMMERA SHIRE— Horsham-Natimuk Road	South of "A." Walmer, P.R., Parish of Vectis East	1·08	..
Horsham-Wal Wal Road	Between Lots 4 and 27-30, Parish of Drung Drung	Between Lots 59 and 60, Parish of Bungalally, and at Breen Lake	·5	1·37
Horsham-Dooen Road	Between Lot 60 and Dooen Swamp, Parish of Dooen	·53	..
Horsham-Hamilton Road	Between Lots 24B and 24F, Parish of Bungalally	..	·44
Horsham-Dimboola Road	Between Lots 131 and 135, Parish of Vectis East	..	·46
WINCHELSEA SHIRE— Birregurra-Forrest Road	General maintenance	12
Iron Road	Metalling	2	11
Prince's Highway	16
		Carried forward	118·932	2404·025

STATEMENT SHOWING MILEAGE AND LOCALITY OF WORKS CONSTRUCTED, ETC.—*continued.*

Name of Municipality and Road.	Particulars as to Locality of Works Constructed.		Mileage of Works Constructed.	
	Permanent Works.	Maintenance.	Permanent Works.	Maintenance.
			Miles.	Miles.
UNDER MUNICIPALITIES—<i>continued.</i>				
		Brought forward	118·032	2404·025
WODONGA SHIRE—				
Murray Valley Road		Generally throughout	1·1
Sydney Road	Wodonga Creek Bridge and approaches	"	·35	8·38
Tallangatta Road		"	10·79
Wodonga-Yackandandah Road		"	3·25
WOORAYL SHIRE—				
Inverloch-Wonthaggi Road		"
Wild Dog Valley Road		"
Farmer's Road		"
Lower Tarwin Road		"
Inverloch-Leongatha Road		"
Leongatha-Yarragon Road		"
Main South Gippsland Road		"
Mardan Road		"
Warragul-Leongatha Road		"
WYCHEPROOF SHIRE—				
Wycheproof-Sea Lake Road	Contract 2P, 21-22—Gravelling near Culgoa	Contract 3M, 21-22—Formation near Warne
"	Contract 1P, 22-23—Limestoning near Warne	Contract 1M, 22-23—Fencing Warne embankment
"	Contract 4P, 22-23—Gravelling near Nullawil	Contract 2M, 22-23—Formation near Dunosa
"	Contract 5P, 22-23—Limestoning near Berriwillock	Contract 3M, 22-23—Limestoning near Sea Lake
"		Contract 7M, 22-23—Limestoning near Boigbeat
Wycheproof-Birchip Road		Gravelling—Wycheproof (day labour) ..	1·00	1·88
Sea Lake-Onyen Road		Re-grading	4
		Contract 4M, 22-23—Clearing and grubbing north of Sea Lake; sand-scooping (day labour)	..	4
Sea Lake-Woomelang Road		Contract 3M, 21-22—Clearing and grubbing	2
Sea Lake-Ultima Road		Contract 5M, 22-23—Limestoning near Sea Lake	..	·37
YACKANDANDAH SHIRE—				
Dederang Road	Forming at Flaggy Creek Bridge	Yackandandah-Dederang	·22	26
"	Reinforced concrete bridge over Flaggy Creek	"	Bridge	..
"	Briggs' to Ivers' (formation only)	"	·7	..
Gundowring Road	Springvale (Closer Settlement) Section	Huon railway station to Tawonga	1·3	30
"	Three-span reinforced concrete box culvert, Jamieson's	"	Culvert	..
Yackandandah-Wodonga Road	Three-span reinforced concrete box culvert, Thomas'	Indigo Gap to Baranduda	Culvert	16
Tallangatta-Wodonga Road	"	Ebden-Huon	6
YARRAWONGA SHIRE—				
Wangaratta-Yarrowonga Road	Contract 1P, 21-22—Re-forming and metalling from eastern boundary of Yarrowonga	Regrading, and gravelling repairs from Crawford's Corner to Ovens Bridge turn-off, and metalling Belmore Street, Yarrowonga	1·29	8
Yarrowonga-Cobram Road	Contract 2P, 21-22—Re-forming and metalling from west end of Contract 1P, 17-18, to Pierce's Corner	Regrading formations and gravelling repairs Pierce's Corner to Burke's Corner, and metalling Telford Street, Yarrowonga	·64	7
Yarrowonga-Rutherglen Road	"	Surface repairs and repairs to approaches to Ovens Bridge from Wangaratta Road turn-off to Ovens Bridge	..	·75
Tungamah-Wilby Road	Contract 1P, 21—Forming and gravelling on the western boundary of Wilby Township	"	·34	..
YEA SHIRE—				
Upper Gonburn Road	"	General maintenance	25
Yea-Glenburn Road	In course of construction	"	·16	18
		Totals	125·022	2676·545

UNDER DIRECT SUPERVISION OF THE BOARD.

ALBERTON SHIRE—				
Boolarra-Welsbpool Road	Clearing and grading Sutherland's Hill	General maintenance throughout	1·35	13·5
BRAYBROOK SHIRE—				
Prince's Highway	"	"	2
BRIGHT SHIRE—				
Bright-Omeo Road	"	"	14
CORIO SHIRE—				
Prince's Highway	"	"	15
FOOTSCRAY CITY—				
Prince's Highway	"	200 cubic yards metal	1·55
LILYDALE SHIRE—				
Healesville Road	"	35 tons screenings
Warburton Road	Reinforced concrete bridge over Wandin Yallock Creek	"
Mount Dandenong Road	Forming and metalling Kilsyth, Montrose	"	1·38	..
MALDON SHIRE—				
Melbourne-Bendigo Road	"	Harcourt and Ravenswood	8·5
MANSFIELD SHIRE—				
Mansfield-Wood's Point Road	"	·31 chains clearing and side-cutting between 10-Mile and Harcourt; and generally through Jamieson to Matlock; supplying and stacking 1,000 cubic yards gravel Jamieson to Lockwood; supplying 500 cubic yards metal from Hope Mine between Maorie Creek and Wood's Point	..	40
Tolmie Road	Reinforced concrete culverts	"
MARONG SHIRE—				
Melbourne-Bendigo Road	"	Between Ravenswood and Big Hill	3·5
MARONG AND MALDON SHIRE—				
Melbourne-Bendigo Road	"	Supplying 400 cubic yards bluestone screenings
METCALFE SHIRE—				
Melbourne-Bendigo Road	"	Supplying 60 cubic yards metal	3·5
MORWELL SHIRE—				
Boolarra-Welsbpool Road	"	Generally throughout	16·1
		Carried forward	2·73	117·65

STATEMENT SHOWING MILEAGE AND LOCALITY OF WORKS CONSTRUCTED, ETC.—*continued.*

Name of Municipality and Road.	Particulars as to Locality of Works Constructed.				Mileage of Works Constructed.	
	Permanent Works.		Maintenance.		Permanent Works.	Maintenance.
					Miles.	Miles.
UNDER DIRECT SUPERVISION OF BOARD— <i>continued.</i>						
				Brought forward	2.73	117.65
MULGRAVE SHIRE— Ferutree Gully Road	200 cubic yards sand, and 440 tons metal and screenings
Prince's Highway	Generally throughout	3.5
" "	700 cubic yards Pyalong sand and 120 tons metal and screenings
MCIVOR SHIRE— Bendigo-Heathcote-Kilmore Road	Reinforced concrete bridge 6 miles from Heathcote
NARRACAN SHIRE— Wallalla Road	Generally throughout	12
OMEO SHIRE— Bright-Omeo Road	Generally throughout	28
Omeo-Glen Wills Road	" "	36
ORBOST SHIRE— Prince's Highway	5.17 day labour	..
" "	Generally throughout	92
" "	Supplying 10,000 super. feet sawn decking
ROCHESTER SHIRE— Bendigo-Echuca Road	Reinforced concrete bridge known as Simmering's008	..
TOWONG SHIRE— Glen Wills-Granite Flat Road	Generally throughout	31
UPPER YARRA AND ALEXANDRA SHIRE— Wood's Point Road	McVeigh's to Matlock	30
VIOLET TOWN SHIRE— Sydney Road	Reinforced concrete bridge over 1-Mile Creek
WARANGA AND HUNTLY SHIRE— Heathcote-Elmore Road	Steel and concrete bridge	Repairing bridge over Campaspe at Elmore
WERRIBEE SHIRE— Prince's Highway	Generally throughout	17.5
				Totals	7.008	367.650

APPENDIX H.

COUNTRY ROADS BOARD.

STATEMENT SHOWING MILEAGE, LOCALITY, AND PARTICULARS OF WORKS CONSTRUCTED ON DEVELOPMENTAL ROADS FOR THE YEAR ENDED 30TH JUNE, 1923.

Name of Municipality and Name of Road.	Locality of Works Constructed.	Mileage of Works Constructed.	Lengths of Roads.			
			For which Permanent Surveys have been made.	For which Plans have been prepared.	For which Tenders have been invited.	For which Tenders have been accepted.
		miles.	miles.	miles.	miles.	miles.
UNDER MUNICIPALITIES.						
ALBERTON SHIRE—						
Carrajung-Gormandale Road	Shaw's Hill, between Won Wron and Currajung South89	..89
Bajook-Traralgon Road	Balook Township to Drysdale's Saddle	1.57	1.57	1.57	1.57
Whitelaw's Road	North Devon to Lower Whitelaw	3.38	3.38	2.07
Albert River Road	Stacey's Bridge to McAnlay's	2	2
Binginwarri-Welshpool Road	Binginwarri Hall to Crisp's	1.38	1.38	1.38	..
Gelliondale Road	Millar's Hill and Jack River	1.1	1.1	2.15	[2.15
ALEXANDRA SHIRE—						
Terip Terip Road	End of 4th Section and between 1st and 2nd Sections07	..	.24	.24	.24
Branch-Caveat Road	Through Allotments 30 and 41, Section C. Parish of Gobur	1.1	1.1	.49
AVON SHIRE—						
Talbotville Road	Black Snake Creek to Spaul's Holding	3.35	3.35	3.35
.. ..	Spaul's Holding to Wonnangatta River	1.72	1.72
Briagolong-Dargo Road	Long's and Lennie's Hills	6.06	6.06
BACCHUS MARSH SHIRE—						
Geelong Road	Near Parwan to Shire boundary	Whole length completed			
Brisbane Road	Balliarg	1.5	1.5	1.5	1.5
McArthur's Road925	.925
Balliarg Road	2.425	2.425
BAIRNSDALE SHIRE—						
Bullunwaal-Tabberabbera Road	Sandhill towards Black Flat	2.46
.. ..	Black Flat (day labour)	1.25
.. ..	Granite Cutting to Boggy Creek	1.55
Sarsfield-Waterhole Road	Main Road to Bec Farm	2.23
BALLAN SHIRE—						
BANNOCKBURN SHIRE—						
Burnside Road	From Bannockburn Cemetery to Gheringhap railway	1.75
BRECHWORTH SHIRE—						
Bowman's Forest Road	Bowman's Station to Whorouly Bridge over Ovens River	1.95	1.95
Myrtleford-Yackandandah Road	Barwidgee Creek to Shire boundary	1.06
.. ..	Shire boundary to Blewitt's in Yackandandah Shire65
.. ..	00-5,000, Barwidgee Creek	1	1
Pioneer Road	Everton railway station to Ovens River	1.10	1.10
BELFAST SHIRE—						
Spencer's Road	From 27,000 to 36,954 feet	1.88	1.88	1.88	1.88
BENALLA SHIRE—						
Tatong Road	From Dodd's Crossing to Drummond's	2.45
BERWICK SHIRE—						
Bunyip-Toninbuk Road	At Cannibal Creek, north of Bunyip	1.51	1.51
BRIGHT SHIRE—						
Happy Valley Road	Metalling from 17,900 to 30,300 feet	2.35 in progress by day labour
Myrtleford-Yackandandah Road	Mudgegonga	1.33	2.69	1.33
Kiewa Valley Road	Tawonga	1.89	..
.. ..	Redbank, Tawonga—bridge over Kiewa River (in progress)	Bridge	Bridge	Bridge	Bridge
Buffalo River Road	Myrtleford—bridge over Happy Valley Creek (in progress)
BULLA SHIRE—						
Sunbury-Riddell Road	From boundary of Shire of Romsey at Jackson's Creek75	1.5	1.5	1.5	1.5
Lancefield Junction-Konagaderra Road	From junction with Melbourne-Lancefield Road, near Lancefield Junction, across Emu Creek5	1.06	1.06	1.06	.61
BULN BULN SHIRE—						
Torwood-Topiram Road	From Lardner's Track to Main South Road	1.18	1.18	4.23	4.23
Neerim South-Neerim East Road	Section 37280	.80
South Road	Sections 1, 2, 3, and 4	2.96	3.94	3.94	.96	.96
Fumina Road	Section 1—metalling	1.38	1.38
.. ..	Sections 2 to 8—formation	1.34	..	8.18
CHARLTON SHIRE—						
Woronook Road	Clearing	1.6	1.42	1.42	1.42	..
Barakee Road	1.74	1.74
Tedywaddy Road	4.26	4.26
COHUNA SHIRE—						
Cohuna-Mead Road	2.93	2.93
Cohuna-McMillan's Road	4.16	4.16	1.24	1.24
Keely's Lane	5.02	5.02	2.03	2.03
COLAC SHIRE—						
Colac-Forrest Road	Sections 1A, 1C, 3, and 4, Ball's Dam and Yeo	1.23	10.41	10.41	5.61	4.21
Irrewarra Estate	Between Turkeith and Prince's Highway	1.44	3.48	3.48	1.44	1.44
Dreccite Estate Road	Sections 1, 3, 6, 7, 8, and 9	5.48	11.39	11.39	8.35	7.41
Read's Road	Between Reedyman's and Dreccite Estate Road	2.24	2.24	2.24	2.24	2.24
Beac-Dreccite Road	From end of metal near Duckholes to Dreccite Road	5.08	4.09
Colac-Beech Forest Road	From Elliniyvt to Kawarren	8.69	8.69
Gerangamete Road	From Colac-Forrest Road to Gerangamete railway station	3.48	2.68
COBIO SHIRE—						
Geelong-Bacchus Marsh Road	Sandhills, Woolloomatta87
.. ..	Parish of Balliarg	2.23	..
..	2.17	..
..77	..
..45	.45
..	1.02	..
CRANBOURNE SHIRE—						
Manks Road	Tooradin Station Road to Cardinia Creek—forming and sanding	2.634
.. ..	Tooradin Station Road west	2.651
.. ..	Erection of timber bridge, 28-ft. span, Tooradin Station Road (partly completed)
.. ..	Fencing	1
Dalmore Road	Manks Road to Cardinia—forming, sanding, and metalling	1.747
Koo-wee-rup-Modella Road	O'Brien's Road to boundary—forming and gravelling	4.802
Pearcedale Road	Fraukston Road to Shire boundary	6.586	6.586
	Carried forward	34.454	95.406	108.066	72.730	67.540

STATEMENT SHOWING MILEAGE, LOCALITY, AND PARTICULARS OF WORKS CONSTRUCTED, ETC.—*continued.*

Name of Municipality and Name of Road.	Locality of Works Constructed.	Mileage of Works Constructed.	Lengths of Roads.			
			For which Permanent Surveys have been made.	For which Plans have been prepared.	For which Tenders have been invited.	For which Tenders have been accepted.
		miles.	miles.	miles.	miles.	miles.
UNDER MUNICIPALITIES—<i>continued.</i>						
	Brought forward	75·990	167·834	172·906	144·792	131·125
MAFFRA SHIRE—						
Middle-Newry Road	5	5	·8	·8
MANSFIELD SHIRE—						
Tolmie Road	Bridge at Bridge Creek	·01	·01	·01	·01	·01
"	Metalling at Stump Hill	1	1	1	1	1
"	Re-formation and metalling	2·35	2·35	2·35	2·35	2·35
"	Filling at Bridge Creek bridge	·17	·17	·17	·17	·17
"	Filling at Broken River bridge	·09	·09	·09	·09	·09
Merton-Strathbogzie Road	Re-formation and metalling	3·41	3·41
MELTON SHIRE—						
Coburn's Road	Northwards from Ballarat Road—in course of construction	2·27	..	1·41	3·71	2·27
MILDURA SHIRE—						
Brownport Road	Carwarp railway station to Brownport Settlement on Murray River—clearing and grubbing	10·5	10·5	10·5	10·5	10·5
Colligan Road	Melbourne railway line to Nangiloc Settlement on Murray River—clearing and grubbing	10	10	10	10	10
Merhein West Road	Merhein westerly to Soldier Settlement—metalling	..	1·35	1·35	1·35	To be carried out by day labour
MINHAMITE SHIRE—						
Woodlands Road	Between Woolsthorpe railway station and Koroit-Macarthur Road	3·89	7·8	7·8	6·97	6·97
Lake Gorrie Road	Between Mount Eccles and Heywood Road ..	1·14	7·3	5·2	2·73	2·73
Heywood Road	Between Hamilton-Macarthur Road and Lindsey's	2·27	9	3·27	2·27	2·27
MIRBOO SHIRE—						
Mirboo-Leongatha Road	Metalling near S. D. Campbell's	·17	·17	·17
"	Metalling through Campbell's	·73	·73	·73	·73
Mardan Road	Metalling Section 1	·74	·74
Mirboo-Boolarra Road	In Morwell Shire—earthworks	2·38	2·38	2·38
Nicholls Road	Metalling Section 1	1·48	1·48
Mirboo-Yarragon Road	Carroll's connexion	·18	..
MORNINGTON SHIRE—						
Tyabb Road	Construction of reinforced concrete bridge (Quinn's Bridge) over Balcombe's Creek
MORWELL SHIRE—						
Jumbuk Road	Through A. Ritchie's—forming and sanding	..	·95	1·46	1·46	1·46
"	"The Run" Section—sanding	·51
Morwell-Boolarra Road	Yinnar to Cross Roads—metalling	·77	·77	·77	·77
"	Cross Roads to Budgerie—metalling	·73	·73
"	Sillocock's Hill deviation—metalling	·89	·89
Mirboo-Boolarra Road	Near Boolarra—grading and forming	·75	·75
Shellcot's Road	Mirboo East end—side-cutting	·89	·89	·89	..
NARRACAN SHIRE—						
Moe River Road	West of Moe River	2·36	2·36	·76	·76
Main Canal Road	From Yarragon to Trafalgar East	2·31	2·31
Trafalgar-Willowgrove Road	Latrobe River deviation	1·48	1·48	1·48	1·48
"	Latrobe River connexion	1·34	1·34
Willowgrove-Fumina Road	Sandy Creek connexion	1·79
Trafalgar East Road	Metalling, &c., entire length (almost completed)	1·44
Moe-Moondarra Road	Between Latrobe and Tanjil Rivers	1·01
"	Over Tanjil River	·19	·19
"	Fencing Moondarra-Watson deviation	1·84
Telbit Road	From Watson to Tyers River	4·91
Erica Road	Fencing State School deviation	1·09
Moe-Yallourn Road	From Narracan Creek to Western Camp	4·48
Yarragon-Leongatha Road	Through Allambee Closer Settlement Estate (almost completed), and fencing part of road	4·6
Yarragon-Allambee-Mirboo Road	Metalling Section 1 (almost completed)	2·2
"	From Section 1 to Shire boundary	4	4	4	4
Allambee-Childers Road	Leviston's deviation	1·14	1·14	1·14	1·14
Yarragon-Thorpdale Road	At Yarragon end	1·16
"	Fencing through Richardson's (incomplete)
Thorpdale-Darlimurla Road	Over 10-Mile Creek	2·2
Thorpdale East Road	Narracan East Section	2·12	2·12
Moe-Coalville Road	At Moe end	2·05	2·05
NEWSTEAD AND MOUNT ALEXANDER SHIRE—						
Glengower-Joyce's Creek Road	Four sections—near Thomas' Block, opposite Shimlins' and Powell's Blocks, opposite Lees', and opposite Loxford's	..	·83	·83	·83	·36
				Timber bridge, three pipe culverts, and one open crossing		Two pipe culverts
OMEQ SHIRE—						
Benambra Road	Healy's Hill Road	·5	·5	·5	·5	·5
Bindi Road	Between Tongio and New Bridge Road	1	1	1	1	1
Bruthen-Omeo Road	Between Omeo and Scrubby Creek	3	3	3	3	3
Reedy Creek Road	Bridge over Tambo River	Bridge
Mountain Ash Road	Shady Creek Bridge (completed)	Bridge
Bindi Road	Concrete bridge over Tambo River	Bridge	Carried out by day labour
ORBOST SHIRE—						
Prince's Highway	Gravelling between Orbost and Waygara	2·09	2·09	2·09	2·09	2·09
Wangrabelle Road	Section 3 (in progress)	2·52	2·52	2·52
"	Section 5	1·32	1·32	..
Mallacoota West Road	Gravelling and loaming	Carried out by day labour
Lower Bemm Road	8·56
West Cann Road	·86
Groves Road	Bridge over Stewart's Lagoon and formation through Groves'	·37
Cann Valley Road	Winnett's Section trimmed and completed	By Day labour
Lochend Road	Whole road under construction	·85	·85	·85
Bete-Bolong Road	·34
Broome's Road	1·65	..
	Carried forward	132·140	267·084	268·986	216·682	195·715

STATEMENT SHOWING MILEAGE, LOCALITY, AND PARTICULARS OF WORKS CONSTRUCTED, ETC.—*continued.*

Name of Municipality and Name of Road.	Locality of Works Constructed.	Mileage of Works Constructed.	Lengths of Roads.			
			For which Permanent Surveys have been made.	For which Plans have been prepared.	For which Tenders have been invited.	For which Tenders have been accepted.
		miles.	miles.	miles.	miles.	miles.
UNDER MUNICIPALITIES—<i>continued.</i>						
Brought forward		206.436	357.990	334.612	281.407	253.220
UPPER YARRA SHIRE—						
Little Yarra Road	Formation	5.52	5.52
Don Road	1.16	1.16
Wood's Point Road	1.58	..
VIOLET TOWN SHIRE—						
Harry's Creek Road	Construction of deviation—Marraweeny Hill ..	1.755	1.755	1.755	1.755	1.755
" " "	Fencing Flat Rock deviation through Hammond's and Ellis Bros. ..	1.064	1.064	1.064	1.064	1.064
" " "	Fencing Flat Rock deviation through A. Ellis' ..	.659	.659	.659	.659	.659
WALPEUP SHIRE—						
Cowangie-Sunset Road	North of Cowangie	1.17	.47	.47	1.64	1.17
Walpeup-Patchewollock Road	South of Walpeup7	1.12	1.12
Ouyen-Kulwin Road	East of Ouyen2	1.32	1.32
Ouyen-Mildura Road	North of Kiamal35	3.25	3.25
Murrayville South	South of Murrayville596	.96
Ouyen-Tempy Road	South of Ouyen	1.3	1.3
Murrayville North Road	North of Murrayville3	.3
WARANGA SHIRE—						
Bushworth-Stanhope Road	1.79	1.79
Carag-Lauderdale Road	2.8	1.02
WARRAGUL SHIRE—						
Lardner's Track (joint with Buln Buln Shire)	Metalling Sections 1, 2, and 3; forming Sections 4, 5, 6, 7, and 8	8.61	3.5	3.5	3.5
Warragul-Bona Vista Road	Sections 3 and 4	2.5	2.5	2.5	2.5
Ferndale-Strezlecki Road	Sections 1, 2, and 3	1.74	2.05	2.05
Old Sale Road	Sections 1 and 2	1.61	1.61
Seaview-Korumburra Road	Seaview to Gourlay's	3.49
WERRIBEE SHIRE—						
Soldiers' Road	Irrigation Settlement, Werribee (practically completed)	3.01	3.74	3.74
WHITTLESEA SHIRE—						
Whittlesea-Kinglake Road	Top of Scrubby Creek deviation to Joyce's Store97	..
WIMMERA SHIRE—						
Horsham-Wonondah East Road	Between Lots 45, 45A and 46B, 46A, Parish of Bungallally	1.5	1.5	1.5	1.5	1.5
WINCHELSEA SHIRE—						
Winchelsea-Inverleigh Road	1.4	1.4	1.4
Lorne Road	1
WOORAYL SHIRE—						
Koonwarra-Tarwin Road	Metalling from Koonwarra to Tarwin	3.61	3.61
" " "	Erection of guard fencing85
" " "	Near Koonwarra railway station4	.4	.4	..
Nerrena Road	Forming deviation through Pearson's	2.04	2.04	2.04	2.04
" " "	Fencing through Pearson's	1.52	1.52	1.52	1.5
Fairbank Road	From Wild Dog Valley Road to Calder's	2.08
Warragul-Leongatha Road	Metalling from Hogan's past Tanner's79	.7
Inverloch-Lower Tarwin Road	Gravelling in three Sections	1.73	1.73
Lower Tarwin Road	Gravelling towards Tarwin Meadows44	.44
East Tarwin Road	Metalling from Baines' to Watts'8	.8
Gwyther Siding Road	Metalling deviation through Martin's	1.01	1.01	1.01	..
WYCHEPROOF SHIRE—						
Culgoa-Lalbert Road	Near Lalbert75	.89	.89	.75	.75
Sea Lake-Tyrrell Downs Road	On Tyrrell Creek12	1.51	1.51	.12	.12
Sea Lake-Myall Road	1	1
Meridian Road	1.12	1.12
Nullawil-Winston Road	1	1
Nyarrin Road43	.43
Wycheproof-Glenloth Road	1	3.28	3.28	2.42	2.42
YACKANDANDAH SHIRE—						
Myrtleford-Yackandandah Road	Fish Creek to beyond Bruarong State School	1.38	1.38
Running Creek Road	Marshalsea's to Grealy's (portion completed last year)	1
Dederang-Tawanga Road	From 300 feet peg at Keegan's Bridge to 1,600 feet peg25
" " "	1,600 feet peg to Running Creek Road junction	2.81	2.81
YEA SHIRE—						
Molesworth-Dropmore Road	5	5
Killingworth Road	1.51	.68
Totals		227.534	403.338	368.750	340.125	307.508

UNDER DIRECT SUPERVISION OF BOARD.

ALBERTON AND SOUTH GIPPSLAND SHIRE—						
Devil's Pinch Road	Clearing and side-cutting near Mount Fatigue	1.2	1.2
ALBERTON AND MORWELL SHIRE—						
Jeeralang West Road	Clearing, side-cutting—Hart's to Brown's Saddle	2.9
Gunyah-Ryton Road	Clearing and side-cutting—Toora-Gunyah junction towards Ryton	1.5	1.5
ALEXANDRA SHIRE—						
Terip Terip Road	Clearing and forming at Beard's Creek6
Caveat off Terip Terip Road	Clearing and forming—south from Terip Terip Road5
BULN BULN SHIRE—						
Fumina-Duggan Road	Clearing and forming—northerly from Latrobe River	1.4
ELTHAM SHIRE—						
Yarra Glen-Kinglake East Road	Clearing and forming at Mount Slide, 9 miles from Yarra Glen8
LILYDALE SHIRE—						
Monbulk-Seville Road	Wiseman's connexion—clearing and earthworks5
MORWELL SHIRE—						
Morwell River Road	Clearing earthworks—near Fix's Bridge and Livingston Road	1	Being carried out by day labour
Middle Creek Road	Clearing and earthworks—about 7 miles from Yinnar5	Being carried out by day labour
Livingston Road	Clearing and earthworks—Duggan's to Peter's Saddle	1.06	1.06
MORWELL AND SOUTH GIPPSLAND SHIRE—						
Gunyah-Ryton Road	Forming and culvert at Gunyah Junction02
NARRACAN SHIRE—						
Moe-Moondarra Road	Timber bridge over Tanjil River16
Carried forward		2.92	1.2	6.66	2.56	2.56

STATEMENT SHOWING MILEAGE, LOCALITY, AND PARTICULARS OF WORKS CONSTRUCTED, ETC.—*continued.*

Name of Municipality and Name of Road.	Locality of Works Constructed.	Mileage of Works Con- structed.	Lengths of Roads.			
			For which Permanent Surveys have been made.	For which Plans have been prepared.	For which Tenders have been invited.	For which Tenders have been accepted.
		miles.	miles.	miles.	miles.	miles.
<i>UNDER DIRECT SUPERVISION OF BOARD—continued.</i>						
	Brought forward	2.92	1.2	6.66	2.56	2.56
ORBOST SHIRE— Orbost-Delegate Road	Clearing, forming, and grading 18M. north of Orbost	6.35	Being carried out by day labour	
Wangrabelle Road	Clearing, forming, and grading 6M. north of Genoa	1.9	..	2.52	Being carried out by day labour	
Murrungowar Road	Clearing, forming, and grading 18M. east of Orbost	10.41	..	1.8	Being carried out by day labour	
Nowa Nowa-Buchan Road	Clearing, forming, and grading south of Cann Creek	..	1.66
OTWAY SHIRE— Forest-Apollo Bay Road	Grubbing, clearing, and earthworks to Williams' turnoff, Mount Sabine	1.08
Wild Dog Valley Road	Martin's to near Cross' Saddle, clearing and earthworks	3.2
OXLEY SHIRE— Abbeyards Road	Clearing and earthworks—Webb's Bridge to Catherine River	17.3
Buffalo River Road	Concrete and timber bridge over Rose River, Dondangadale
PORTLAND SHIRE— Prince's Highway	Between Mumbannar and Dartmore, and near South Australian Border	2.76	..	7.75	Being carried out by day labour	
SOUTH GIPPSLAND AND SHIRE— Woorayl Turton's Creek Road	Grubbing, clearing, and earthworks from Lodge's Bridge	1	Being carried out by day labour	
ROSEDALE SHIRE— Merriman's Creek Road	Gormandale to Blackwarri	13.5
UPPER MURRAY SHIRE— Khaucobin Road	Clearing and earthworks near Finlay's Station, along Murray River	1.9	3.8	3.8	Being carried out by day labour	
VIOLET TOWN SHIRE— Harry's Creek Road	Marraweeny Hill—clearing and forming	3.5	3.5
WOORAYL SHIRE— York Road	Gunyah Junction to Turton's Creek	3.26
Allambee Estate Road	Clearing and earthworks near Sagasser's	1.2	1.2
WARRAGUL SHIRE— Ferdale-Strezlecki Road	Clearing and earthworks from Warragul-Korumburra Road to Wild Dog Creek	1.7
	Totals	52.7	24.86	23.31	2.56	2.56