

1914.  

---

VICTORIA.

---

STATE RIVERS AND WATER SUPPLY COMMISSION.

---

N I N T H  
  
A N N U A L   R E P O R T.  
  
1913-14.

---

PRESENTED TO BOTH HOUSES OF PARLIAMENT PURSUANT TO THE PROVISIONS OF  
THE WATER ACTS.

---

By Authority:  
ALBERT J. MULLETT, GOVERNMENT PRINTER, MELBOURNE.  
No. 6.—[1s. 6d.]—12891.



STATE RIVERS AND WATER SUPPLY COMMISSION.

---

ANNUAL REPORT, 1913-14.

---

In compliance with the provisions of the Water Acts, the State Rivers and Water Supply Commission submits the following Report and Statement for the Financial Year 1913-14, and Estimates for the ensuing year.

## WORKS UNDER CONTROL OF COMMISSION.

The following statement gives a brief description, summary of cost, and other particulars relative to the undermentioned works controlled by the Commission.

## A.—FREE HEAD-WORKS.

| DESCRIPTION OF WORKS.  | Capital Debt at<br>30th June, 1914.<br>Exclusive of cost<br>of Loan Flotation. |
|--|--|
| 1. <b>Broken River Works</b> :—Casey's Weir and offtake, with about 59 chains of channel to the Broken Creek ; Gowangardie Weir with offtake sluice .. .. .  | £<br>14,853  |
| 2. <b>Goulburn River Works</b> :—Weir on the Goulburn River, about 9 miles above Murchison ; channel therefrom, about 23½ miles, to Waranga Reservoir ; and that Reservoir   | 734,258  |
| 3. <b>Kerang North-West Lakes Works</b> :—Weir on the Loddon River at its confluence with the Pyramid Creek ; regulating weirs at the effluence from the Loddon of the Sheepwash and Washpen Creeks ; channel from the Washpen Creek regulator to Reedy Lake, Middle Lake, Third Lake, Lake Charm, Race-course Lake, Cullen's Lake, Kangaroo Lake, and Lake Tutchewop, and to the Little Murray River, with water storage works at these lakes .. .. . | 9,587  |
| 4. <b>Kow Swamp Works</b> :—Intake from the Murray River with regulator, at the effluence of the Gunbower Creek ; channel thence to the Kow Swamp Reservoir, and that Reservoir ; channel along the northern side of the reservoir ; channel from the outlet of the reservoir, about 23½ miles, to the left bank of the Loddon River ..  | 187,081  |
| 5. <b>Lake Lonsdale Reservoir</b> :—Reservoir at Lake Lonsdale, on the Little Wimmera River, near Ledcourt .. .. .   | 49,054   |
| 6. <b>Loddon River Works</b> :—Laanecoorie Weir, on the Loddon ; Bridgewater Weir, on the Loddon ; Kinypanial Weir, on the Loddon .. .. .  | 167,360  |
| 7. <b>Long Lake Pumping Works</b> :—Regulated intake to Lake Baker, from the Little Murray River ; water storage works at Lake Baker and Long Lake, with channel connecting these lakes ; pumping plant at Long Lake, with rising main thence about 7 miles to allotment 10M, parish of Kooem ; system of main distributary channels, about 85 miles in length .. .. .   | 27,346   |
| 8. <b>Lower Wimmera Compensation Works</b> :—Drung Drung Weir, on the Wimmera, near allotment 29, parish of Longerenong ; Dimboola Weir, on the Wimmera, near Dimboola township ; Antwerp Weir, on the Wimmera, at Antwerp Station home-stead ; Jeparit Weir, on the Wimmera, near Jeparit township .. .. .  | 8,558  |
| Total .. .. .  | <b>£1,198,097</b>  |

## B.—WATERWORKS DISTRICTS

Distributary Works within Districts under the control of the Commission.

| Name of District<br>(Including Urban Districts).   | Total<br>Capital<br>Expenditure. | Capital<br>Written<br>Off by<br>Acts 1625<br>and 1651. | Redemption,<br>Paid to<br>Treasury. | Capital Debt<br>at 30th June,<br>1914. |
|--|----------------------------------|--|-------------------------------------|--|
|  | £                                | £  | £                                   | £                                      |
| 1. Birchip .. .. .   | 186,601                          | 700  | 1,885                               | 184,016                                |
| 2. Sea Lake .. .. .  |                                  |  |                                     |  |
| 3. Tyrrell .. .. .   |                                  |  |                                     |  |
| 4. Wycheproof .. .. .  |                                  |  |                                     |  |
| 5. Coliban .. .. .   | 1,212,774                        | ..   | ..                                  | 1,212,774                              |
| 6. Karkaroc .. .. .  | 75,453                           | ..   | 1,943                               | 73,510                                 |
| 7. Kerang North-west Lakes<br>(Free Headworks excluded) ..                                 | 1,667                            | ..   | ..                                  | 1,667                                  |
| 8. Long Lake (Free Headworks<br>excluded) .. .. .  | 40,814                           | ..   | 421                                 | 40,393                                 |
| 9. Tyntynder .. .. .   | 28,442                           | ..   | ..                                  | 28,442                                 |
| 10. Walpeup East .. .. .   | 2,988                            | ..   | ..                                  | 2,988                                  |
| 11. Walpeup West .. .. .   | 1,511                            | ..   | ..                                  | 1,511                                  |
| 12. Western Wimmera .. .. .  | 245,003                          | 132,835  | 13,316                              | 98,852                                 |
| 13. Wimmera United .. .. .   | 179,519                          | 36,392   | 11,064                              | 132,063                                |
| 14. Wonthaggi .. .. .  | 62,279                           | ..   | 1,000                               | 61,279                                 |
| <b>Wimmera Main Channels</b> (amount<br>being debited to districts bene-<br>fited) .. .. . | 69,596                           | ..   | ..                                  | 69,596                                 |
|  | 2,106,647                        | 169,927  | 29,629                              | 1,907,091                              |
| Carried forward .. .. .  |                                  |  |                                     | <b>£3,105,188</b>                      |

WORKS UNDER CONTROL OF COMMISSION—*continued.*Capital Debt  
at 30th June,  
1914,  
Exclusive  
of Cost of Loan  
Flotation.

Brought forward .. .. .

£  
3,105,188

## C.—IRRIGATION AND WATER SUPPLY DISTRICTS.

Distributary Works within Districts under the control of the Commission.

| Name of District<br>(Including Urban Divisions). | Total Capital<br>Expenditure. | Capital written<br>off by Acts<br>1825 and 1851. | Redemption<br>paid to<br>Treasury. | Capital<br>Debt at<br>30th June,<br>1914. |
|--|-------------------------------|--|------------------------------------|---|
|  | £                             | £  | £                                  | £   |
| 1. Bacchus Marsh .. .. .                         | 49,207                        | 8,906  | 493                                | 39,808                                    |
| 2. Boort .. .. .                                 | 54,546                        | 35,259   | 394                                | 18,893                                    |
| 3. Campaspe .. .. .                              | 62,113                        | 52,685   | 305                                | 9,123                                     |
| 4. Cohuna .. .. .                                | 116,018                       | 49,197   | 371                                | 66,450                                    |
| 5. Deakin .. .. .                                | 93,639                        | 34,748   | 2,144                              | 56,747                                    |
| 6. Dingee .. .. .                                | 10,242                        | ..   | ..                                 | 10,242                                    |
| 7. Dry Lake .. .. .                              | 1,704                         | 686  | 299                                | 719                                       |
| 8. Gannawarra .. .. .                            | 41,834                        | 13,733   | 75                                 | 28,026                                    |
| 9. Gannawarra West .. .. .                       | 34,997                        | 19,446   | 105                                | 15,446                                    |
| 10. Kerang .. .. .                               | 75,111                        | 35,338   | 710                                | 39,063                                    |
| 11. Koondrook .. .. .                            | 106,570                       | 30,872   | 1,475                              | 74,223                                    |
| 12. Merbein .. .. .                              | 51,445                        | ..   | ..                                 | 51,445                                    |
| 13. Nyah .. .. .                                 | 21,804                        | ..   | ..                                 | 21,804                                    |
| 14. Rochester .. .. .                            | 96,572                        | ..   | ..                                 | 96,572                                    |
| 15. Rodney .. .. .                               | 348,049                       | 149,949  | 5,706                              | 192,394                                   |
| 16. Shepparton .. .. .                           | 41,309                        | ..   | ..                                 | 41,309                                    |
| 17. Swan Hill .. .. .                            | 51,389                        | 19,799   | 306                                | 31,284                                    |
| 18. Tongala .. .. .                              | 57,165                        | ..   | ..                                 | 57,165                                    |
| 19. Tragowel Plains .. .. .                      | 178,914                       | 124,534  | 444                                | 53,936                                    |
|  | 1,492,628                     | 575,152  | 12,827                             | 904,649                                   |

904,649

D.—MAIN SUPPLY WORKS.—COST TO BE APPORTIONED TO DISTRICTS  
BENEFITED ON THE BASIS OF WATER ALLOTMENT.

| 1. Goulburn Main Channels (exclusive of Free Head-works)— |   | Tentative Debits to Districts, 1913-1914— |          |   |         |
|---|---|---|----------|---|---------|
| East Goulburn ..  | } | Rodney .. .. .                            | £120,000 | } |         |
| Waranga Reservoir to Campaspe ..                          |   | Tragowel Plains .. .. .                   | 100,000  |   |         |
| Campaspe to Serpentine ..                                 |   | Rochester .. .. .                         | 60,000   |   | 129,389 |
| Main Distributary Channels ..                             |   | Shepparton .. .. .                        | 26,000   |   | 241,029 |
|   |   | Deakin .. .. .                            | 24,000   |   |         |
|   |   | Tongala .. .. .                           | 23,000   |   | 192,381 |
|   |   | Dingee .. .. .                            | 2,000    |   |         |
|   |   |   | £355,000 |   | 13,591  |
|   |   |   |          |   | 576,390 |
|   |   |   |          |   |         |
| 2. Pyke's Creek and Werribee Scheme—                      |   |   |          |   |         |
| Pyke's Creek Reservoir ..                                 | } | Bacchus Marsh .. .. .                     | £55,000  | } |         |
| Diverting Weir and Distributary Works ..                  |   |   |          |   | 63,080  |
| Melton Reservoir  |   |   |          |   | 45,844  |
| Lerderberg River Works ..                                 |   |   |          |   | 3,848   |
|   |   |   |          |   | 475     |
|   |   |   | 113,247  |   |         |

Carried forward .. .. . £4,699,474

WORKS UNDER CONTROL OF COMMISSION—*continued.*Capital Debt  
at 30th June,  
1914.  
Exclusive  
of Cost of Loan  
Flotation.

Brought forward .. .. £ 4,699,474

## E.—WATERWORKS TRUSTS DISTRICTS.

## DISTRICTS HELD IN TRUST BY THE COMMISSION.

The undermentioned districts are held in trust by the Commission in pursuance of Section 36 of the *Water Act 1909*, Section 10 of the *Carrum Drainage Works Act 1905*, and Section 278 of the *Water Act 1905*.

| Name of Trust.                    | Total Advances<br>by State. | Capital written<br>off by Acts<br>1825 and 1851. | Redemption paid<br>to Treasury. | Capital Debt at<br>30th June, 1914. |
|-----------------------------------|-----------------------------|--|---------------------------------|-------------------------------------|
|                                   | £                           | £  | £                               | £                                   |
| 1. Avoca Water Trust—             |                             |  |                                 |                                     |
| Rural District .. ..              | 11,455                      | 2,494  | 739                             | 8,222                               |
| Urban District (Quambatook) ..    | 3,573                       | ..   | 11                              | 3,562                               |
| 2. Carrum Waterworks Trust ..     | 25,732                      | 7,732  | 1,481                           | 16,519                              |
| 3. Loddon United Waterworks Trust | 21,234                      | 1,717  | 1,715                           | 17,802                              |
|                                   | 61,994                      | 11,943   | 3,946                           | 46,105                              |
|                                   |                             |  | <b>Grand Total .. ..</b>        | <b>£ 4,699,474</b>                  |

## LANDS SUPPLIED WITH WATER WITHIN THE STATE.

The area of country lands within the State artificially supplied with water for domestic and ordinary use and for watering stock is, approximately, 20,730 square miles, equal to about 13,267,000 acres. The extent of land under irrigated culture, for all kinds of crop, is 317,287 acres, an increase of 67,304 acres over the area irrigated in the previous year. The area irrigated includes about 24,000 acres, watered under yearly permits granting authority to divert water from streams throughout the State. The number of separate towns supplied, exclusive of the city of Melbourne and its suburbs, is 148, as shown in the following statement :—

| Controlling Authorities.     | Number of Town Supplies. | Estimated Population Served. |
|------------------------------|--------------------------|------------------------------|
| Commission ... ..            | 38                       | 70,000                       |
| Waterworks Trusts ... ..     | 93                       | 152,000                      |
| Local Governing bodies... .. | 17                       | 69,000                       |
| Totals ... ..                | 148                      | 291,000                      |

## LANDS UNDER IRRIGATED CULTURE.

The two statements herewith show the extent of Areas under Irrigation for last year in detail, and for the last five years totalled for comparative purposes.

## STATEMENT OF THE EXTENT OF IRRIGATION AND OF AREAS OF DIFFERENT KINDS OF CROPS WATERED—YEAR 1913-14.

| Name of District.                                     | Area under Irrigation (Acres). |                                    |  |                |                                   |              |                | Total.         |
|---|--------------------------------|------------------------------------|--|----------------|-----------------------------------|--------------|----------------|----------------|
|   | Cereals.                       | Lucerne grown for Pasture and Hay. | Sorghum and other Annual Fodder Crops. | Pasture.       | Vineyards, Orchards, and Gardens. | Fallows.     | Miscellaneous. |                |
| <i>Supplied from Goulburn State Works.</i>            |                                |                                    |  |                |                                   |              |                |                |
| Shepparton .. .. .                                    | 613                            | 3,518                              | 630                                    | 781            | 1,116                             | 778          | ..             | 7,436          |
| Rodney .. .. .  | 5,619                          | 20,279                             | 461                                    | 12,961         | 5,518                             | 1,192        | 117            | 46,147         |
| Deakin .. .. .  | 1,120                          | 2,128                              | 134                                    | 3,005          | 54                                | 204          | ..             | 6,645          |
| Tongala .. .. .                                       | 2,371                          | 3,117                              | 762                                    | 2,071          | 378                               | 850          | 15             | 9,564          |
| Rochester .. .. .                                     | 1,094                          | 6,546                              | 2,501                                  | 3,946          | 665                               | 2,572        | 153            | 17,477         |
| Dingee .. .. .  | 63                             | 360                                | 50                                     | 356            | 19                                | 382          | ..             | 1,230          |
| Tragowel Plains .. .. .                               | 15,830                         | 919                                | 5,348                                  | 25,488         | 36                                | 183          | ..             | 47,804         |
| Totals .. .. .  | 26,710                         | 36,867                             | 9,886                                  | 48,608         | 7,786                             | 6,161        | 285            | 136,303        |
| <i>Supplied from Kow Swamp State Works.</i>           |                                |                                    |  |                |                                   |              |                |                |
| Kerang .. .. .  | 7,503                          | 1,097                              | 2,641                                  | 15,374         | 22                                | 297          | 73             | 27,007         |
| Dry Lake .. .. .                                      | 66                             | ..                                 | 39                                     | 380            | 6                                 | ..           | ..             | 491            |
| Lands supplied direct (outside Districts) .. .. .     | 2,595                          | 2,095                              | 469                                    | 1,725          | 7                                 | 20           | ..             | 6,911          |
| Totals .. .. .  | 10,164                         | 3,192                              | 3,149                                  | 17,479         | 35                                | 317          | 73             | 34,409         |
| <i>Supplied from Loddon State Works.</i>              |                                |                                    |  |                |                                   |              |                |                |
| Boort .. .. .   | 5,249                          | 745                                | 1,462                                  | 5,310          | 80                                | 11           | ..             | 12,857         |
| Tragowel Plains .. .. .                               | 957                            | 28                                 | ..                                     | 474            | ..                                | 20           | ..             | 1,479          |
| Totals .. .. .  | 6,206                          | 773                                | 1,462                                  | 5,784          | 80                                | 31           | ..             | 14,336         |
| <i>Supplied from other State Works.</i>               |                                |                                    |  |                |                                   |              |                |                |
| Bacchus Marsh .. .. .                                 | 43                             | 1,551                              | 60                                     | 425            | 72                                | 54           | ..             | 2,205          |
| Campaspe .. .. .                                      | 151                            | 389                                | 15                                     | 92             | 18                                | 7            | ..             | 672            |
| Cohuna .. .. .  | 3,795                          | 4,710                              | 1,457                                  | 9,605          | 171                               | 500          | ..             | 20,238         |
| Gannawarra .. .. .                                    | 3,731                          | 629                                | 1,255                                  | 6,602          | 34                                | 149          | ..             | 12,400         |
| Gannawarra West .. .. .                               | 4,126                          | 373                                | 661                                    | 3,553          | ..                                | 31           | ..             | 8,744          |
| Koondrook .. .. .                                     | 6,352                          | 855                                | 1,237                                  | 9,978          | 57                                | 207          | 1,081          | 19,767         |
| Merbein .. .. .                                       | 850                            | 460                                | ..                                     | ..             | 2,925                             | 430          | 435            | 5,100          |
| Nyah .. .. .  | 306                            | 171                                | 23                                     | 86             | 653                               | 178          | 177            | 1,594          |
| Swan Hill .. .. .                                     | 3,195                          | 3,382                              | 445                                    | 1,071          | 64                                | 323          | 144            | 8,624          |
| Western Wimmera .. .. .                               | 48                             | 30                                 | 13                                     | 27             | 993                               | ..           | 2              | 1,113          |
| Totals .. .. .  | 22,597                         | 12,550                             | 5,166                                  | 31,439         | 4,987                             | 1,879        | 1,839          | 80,457         |
| <i>Supplied from other sources.</i>                   |                                |                                    |  |                |                                   |              |                |                |
| Kerang North-West Lakes District .. .. .              | 5,422                          | 1,295                              | 1,279                                  | 4,024          | ..                                | ..           | ..             | 12,020         |
| First Mildura .. .. .                                 | 471                            | 487                                | ..                                     | ..             | 11,079                            | ..           | ..             | 12,037         |
| Coliban District .. .. .                              | 182                            | 300                                | 170                                    | 389            | 2,520                             | 148          | 36             | 3,745          |
| Private Diversions Kerang District .. .. .            | 3,175                          | 71                                 | 262                                    | 2,470          | 2                                 | ..           | ..             | 5,980          |
| Other Private Diversions throughout the State .. .. . | Details not available.         |                                    |  |                |                                   |              |                | 18,000         |
| <b>Grand Totals, 1913-14 .. .. .</b>                  | <b>74,927</b>                  | <b>55,535</b>                      | <b>21,374</b>                          | <b>110,193</b> | <b>26,489</b>                     | <b>8,536</b> | <b>2,233</b>   | <b>317,287</b> |
| Grand Totals, 1912-13 .. .. .                         | 64,110                         | 44,470                             | 16,898                                 | 76,704         | 22,267                            | 4,600        | 1,934          | 249,983        |

## COMPARATIVE STATEMENT OF THE EXTENT OF IRRIGATION, 1909-10 TO 1913-14.

|  | Area under Irrigation (Acres). |          |          |          |          |
|--|--------------------------------|----------|----------|----------|----------|
|  | 1909-10.                       | 1910-11. | 1911-12. | 1912-13. | 1913-14. |
| Goulburn State Works .. .. .                     | 41,708                         | 28,849   | 76,740   | 96,800   | 136,303  |
| Kow Swamp State Works .. .. .                    | 17,904                         | 23,650   | 17,395   | 30,454   | 34,409   |
| Loddon State Works .. .. .                       | 14,363                         | 26,862   | 21,483   | 18,885   | 14,336   |
| Other State Works .. .. .                        | 32,624                         | 41,896   | 67,042   | 59,374   | 80,457   |
| Kerang North-West Lakes .. .. .                  | 4,828                          | 3,496    | 13,543   | 4,546    | 12,020   |
| First Mildura Trust Works .. .. .                | 12,000                         | 12,000   | 11,379   | 12,209   | 12,037   |
| Coliban State Works .. .. .                      | 2,997                          | 3,160    | 2,937    | 3,632    | 3,745    |
| Private Works in Kerang District .. .. .         | 3,347                          | 2,944    | 4,814    | 5,083    | 5,980    |
| Other Private Works throughout the State .. .. . | 8,000                          | 11,000   | 14,500   | 19,000   | 18,000   |
| Totals .. .. .                                   | 137,771                        | 153,857  | 229,833  | 249,983  | 317,287  |

## VALUATIONS, RATES, AND COMPULSORY IRRIGATION CHARGES.

The statements which follow set forth the whole of the districts supplied by the Commission with water for domestic and ordinary use and for watering cattle or other stock, together with the annual value of the lands and tenements in such districts and the rates and compulsory irrigation charges made. An estimate of the number of persons dwelling in such districts is also appended.

During the year rates were, for the first time, made in the newly-constituted Waterworks Districts of Kerang North-west Lakes, Tyrrell, Walpeup East, and Walpeup West, and the Urban Districts of Berriwillock, Cohuna, Quambatook, Ultima, and Watchem; while in the new Irrigation District of Dingee a rate and compulsory irrigation charge were also levied.

In twenty-two districts the lands were, for the purpose of making and levying rates, arranged in divisions (not more than three in number) in accordance with the relative benefits derived by such lands from the works.

In thirteen districts the Commission made and levied compulsory irrigation charges, details of which are set out hereunder. In Merbein and Nyah reduced charges had been, in pursuance of the powers given by the *Murray Settlements Act* 1907, levied for three years. The charges in these districts will now, however, be based on the actual cost of supplying water.

## A.—VALUATIONS AND RATES.

| Districts Supplied with Water for Domestic and Ordinary Use and for Watering Cattle or other Stock. | Annual Value of Lands and Tenements. | Rate in the £ made during year ended 30th June, 1914. | Period of Rate.                    | Estimated Number of Persons dwelling in District. |
|---|--------------------------------------|---|------------------------------------|---|
| <b>IRRIGATION AND WATER SUPPLY DISTRICTS.</b>   |                                      |   |                                    |   |
|   | Valuation by Commission.             |   |                                    |   |
|   | £                                    | s. d.   |                                    |   |
| 1. BACOHUS MARSH ..   | 11,422                               | .. 1 0  | 1st July, 1913, to 30th June, 1914 | 550   |
| 2. BOORT ..   | 15,483                               | 1st Division .. 2 0                                   | " " "                              | 735   |
|   |                                      | 2nd Division .. 1 0                                   | " " "                              |   |
| 3. CAMPASPE ..  | 9,857                                | 1st Division .. 1 8                                   | " " "                              | 470   |
|   |                                      | 2nd Division .. 0 10                                  | " " "                              |   |
|   |                                      | 3rd Division .. 0 5                                   | " " "                              |   |
| 4. COHUNA ..  | 16,808                               | 1st Division .. 2 0                                   | " " "                              | 899   |
|   |                                      | 2nd Division .. 1 0                                   | " " "                              |   |
| 5. DEAKIN ..  | 64,118                               | 1st Division .. 1 6                                   | " " "                              | 4,130   |
|   |                                      | 2nd Division .. 0 9                                   | " " "                              |   |
|   |                                      | 3rd Division .. 0 4½                                  | " " "                              |   |
| 6. DINGEE ..  | 2,587                                | .. 1 0  | " " "                              | 198   |
| 7. DRY LAKE ..  | 250                                  | (No rate made)  | " " "                              | 11  |
| 8. GANNAWARRA ..  | 7,381                                | 1st Division .. 2 0                                   | 1st July, 1913, to 30th June, 1914 | 353   |
|   |                                      | 2nd Division .. 1 0                                   | " " "                              |   |
|   |                                      | .. 3 0  | " " "                              | 170   |
| 9. GANNAWARRA WEST ..   | 3,468                                | .. 3 0  | " " "                              | 170   |
| 10. KERANG ..   | 17,653                               | 1st Division .. 2 6                                   | " " "                              | 830   |
|   |                                      | 2nd Division .. 1 3                                   | " " "                              |   |
|   |                                      | 3rd Division .. 0 7½                                  | " " "                              |   |
| 11. KOONDRICK ..  | 11,285                               | 1st Division .. 2 0                                   | " " "                              | 436   |
|   |                                      | 2nd Division .. 1 0                                   | " " "                              |   |
| 12. MERBEIN ..  | 1,637                                | .. 2 0  | " " "                              | 920   |
| 13. NYAH ..   | 859                                  | .. 2 0  | " " "                              | 240   |
| 14. ROCHESTER ..  | 28,175                               | 1st Division .. 1 0                                   | " " "                              | 2,500   |
|   |                                      | 2nd Division .. 0 6                                   | " " "                              |   |
|   |                                      | 3rd Division .. 0 3                                   | " " "                              |   |
| 15. RODNEY ..   | 143,902                              | 1st Division .. 1 0                                   | " " "                              | 4,500   |
|   |                                      | 2nd Division .. 0 6                                   | " " "                              |   |
|   |                                      | 3rd Division .. 0 3                                   | " " "                              |   |
| 16. SHEPPARTON ..   | 14,843                               | .. 1 0  | " " "                              | 911   |
| 17. SWAN HILL ..  | 6,645                                | .. 2 0  | " " "                              | 470   |
| 18. TONGALA ..  | 14,422                               | .. 1 0  | " " "                              | 1,122   |
| 19. TRAGOWEL PLAINS ..  | 32,818                               | 1st Division .. 1 0                                   | " " "                              | 1,050   |
|   |                                      | 2nd Division .. 0 6                                   | " " "                              |   |



A.—VALUATIONS AND RATES—*continued.*

| Districts Supplied with Water for Domestic and Ordinary Use and for Watering Cattle or other Stock. | Annual Value of Lands and Tenements. | Rate in the £ made during year ended 30th June, 1914.               | Period of Rate.                       | Estimated Number of Persons dwelling in District. |
|---|--------------------------------------|---|---------------------------------------|---|
| <b>WATERWORKS DISTRICTS.</b>  |                                      |   |                                       |   |
|   | Valuation by Commission.             |   |                                       |   |
|   | £                                    | s. d.   |                                       |   |
| 20. AXE CREEK .. .. .   | 1,279                                | .. .. 2 0   | 1st July, 1913, to 30th June, 1914    | 233   |
| 21. BIRCHIP .. .. .   | 23,891                               | 1st Division .. 2 0<br>2nd Division .. 1 0<br>3rd Division .. 0 6   | " " "<br>" " "<br>" " "               | 2,450   |
| 22. HARCOURT .. .. .  | 5,552                                | .. .. 1 6   | " " "                                 | 550   |
| 23. KARKAROOC .. .. .   | 80,800                               | 1st Division .. 1 6<br>2nd Division .. 0 9<br>3rd Division .. 0 4½  | " " "<br>" " "<br>" " "               | 3,000   |
| 24. KERANG NORTH-WEST LAKES   | 6,074                                | 1st Division .. 1 6<br>2nd Division .. 0 9                          | " " "<br>" " "                        | 273   |
| 25. LONG LAKE .. .. .   | 40,373                               | 1st Division .. 2 6<br>2nd Division .. 1 3<br>3rd Division .. 0 7½  | " " "<br>" " "<br>" " "               | 1,500   |
| 26. SEA LAKE .. .. .  | 53,350                               | 1st Division .. 2 0<br>2nd Division .. 1 0<br>3rd Division .. 0 6   | " " "<br>" " "<br>" " "               | 2,050   |
| 27. TYNTYNDER   | 12,390                               | 1st Division .. 2 9<br>2nd Division .. 1 4½<br>3rd Division .. 0 8¼ | " " "<br>" " "<br>" " "               | 700   |
| 28. TYRRELL .. .. .   | 30,294                               | 1st Division .. 2 6<br>2nd Division .. 1 3<br>3rd Division .. 0 7½  | " " "<br>" " "<br>" " "               | 2,110   |
| 29. WALPEUP EAST .. .. .  | 27,302                               | 1st Division .. 0 5<br>2nd Division .. 0 2½                         | " " "<br>" " "                        | 1,500   |
| 30. WALPEUP WEST .. .. .  | 45,109                               | .. .. 0 4   | " " "                                 | 2,500   |
| 31. WESTERN WIMMERA .. .. .   | 240,636                              | 1st Division .. 1 0<br>2nd Division .. 0 6<br>3rd Division .. 0 3   | " " "<br>" " "<br>" " "               | 10,000  |
| 32. WIMMERA UNITED .. .. .  | 256,055                              | 1st Division .. 1 0<br>2nd Division .. 0 6<br>3rd Division .. 0 3   | " " "<br>" " "<br>" " "               | 8,720   |
| 33. WYCHEPROOF .. .. .  | 41,282                               | 1st Division .. 2 0<br>2nd Division .. 1 0<br>3rd Division .. 0 6   | " " "<br>" " "<br>" " "               | 2,130   |
| <b>URBAN DIVISIONS AND DISTRICTS.</b>   |                                      |   |                                       |   |
|   | Municipal Valuation.                 |   |                                       |   |
|   | £                                    | s. d.   |                                       |   |
| 34. BACCHUS MARSH .. .. .   | 7,039                                | .. .. 1 6   | 1st July, 1913, to 30th June, 1914    | 1,550   |
| 35. BERRIWILLOCK .. .. .  | 536                                  | .. .. 2 0   | 1st January, 1914, to 30th June, 1914 | 110   |
| 36. BEULAH .. .. .  | 3,686                                | .. .. 2 9   | 1st July, 1913, to 30th June, 1914    | 550   |
| 37. BIRCHIP .. .. .   | 5,558                                | .. .. 2 6   | " " "                                 | 900   |
| 38. COHUNA .. .. .  | 1,826                                | .. .. 3 6   | " " "                                 | 400   |
| 39. COROP .. .. .   | 404                                  | .. .. 2 0   | " " "                                 | 90  |
| 40. DIMBOOLA .. .. .  | 6,465                                | .. .. 1 9   | " " "                                 | 800   |
| 41. HOPETOUN .. .. .  | 3,021                                | .. .. 2 9   | " " "                                 | 450   |
| 42. JEPARIT .. .. .   | 3,849                                | .. .. 2 6   | " " "                                 | 500   |
| 43. KOONDROOK .. .. .   | 2,317                                | .. .. 3 0   | " " "                                 | 450   |
| 44. LAKE BOGA .. .. .   | 1,197                                | .. .. 3 0   | " " "                                 | 270   |
| 45. MINYIP .. .. .  | 3,046                                | .. .. 3 0   | " " "                                 | 650   |
| 46. NATIMUK .. .. .   | 2,499                                | .. .. 1 6   | " " "                                 | 420   |
| 47. RAINBOW .. .. .   | 6,291                                | .. .. 2 3   | " " "                                 | 800   |
| 48. RUPANYUP .. .. .  | 2,084                                | .. .. 3 0   | " " "                                 | 450   |
| 49. SEA LAKE .. .. .  | 2,704                                | .. .. 3 0   | " " "                                 | 510   |
| 50. ULTIMA .. .. .  | 1,502                                | .. .. 3 0   | " " "                                 | 250   |
| 51. WATCHEM .. .. .   | 1,103                                | .. .. 2 0   | 1st December 1913, to 30th June, 1914 | 180   |
| 52. WONTHAGGI .. .. .   | 17,967                               | .. .. 1 9   | 1st July, 1913, to 30th June, 1914    | 4,500   |
| 53. WOOMELANG .. .. .   | 2,394                                | .. .. 3 0   | " " "                                 | 420   |
| 54. WYCHEPROOF .. .. .  | 3,238                                | .. .. 2 6   | " " "                                 | 700   |

## A.—VALUATIONS AND RATES—continued.

| Districts Supplied with Water for Domestic and Ordinary Use and for Watering Cattle or other Stock. | Annual Value of Lands and Tenements. | Rate in the £ made during year ended 30th June, 1914.  | Period of Rate.  | Estimated Number of Persons dwelling in District. |
|---|--------------------------------------|--|--|---|
| <b>COLIBAN SYSTEM.</b>  |                                      |  |  |   |
| 55. COLIBAN .. .. .   | Municipal Valuation.<br>£<br>314,618 | <i>s. d.</i><br>On Valuation<br>up to £300 .. 1 6<br>(Minimum 20s.)<br>From £301 up<br>to £700 .. 1 3<br>From £701 on 1 0<br>Vacant lands .. 1 6 | 1st July, 1913, to 30th<br>June, 1914<br>" " "<br>" " "<br>" " "                             | 65,000  |
| <b>WATERWORKS TRUSTS.</b>   |                                      |  |  |   |
| 56. AVOCA .. .. .   | £<br>30,841                          | <i>s. d.</i><br>.. .. 0 4½   | 1st January, 1914, to 31st<br>December, 1914   | 1,300   |
| 57. CARRUM .. .. .  | 18,587                               | 1st Division .. 4 0<br>2nd Division .. 1 6<br>3rd Division .. 0 3<br>4th Division .. 0 4<br>5th Division .. 3 0                                  | " " "<br>" " "<br>" " "<br>" " "   | 820   |
| 58. QUAMBATOOK (URBAN)  | 2,096<br>2,342                       | .. .. 1 0<br>.. .. 3 3   | 1st October, 1913, to 31st<br>December, 1913<br>1st January, 1914, to 31st<br>December, 1914 | 300   |
|   | Valuation by<br>Commission.<br>£     |  |  |   |
| 59. LODDON UNITED .. .. .   | 94,189                               | 1st Division .. 0 8<br>2nd Division .. 0 4<br>3rd Division .. 0 2  | " " "<br>" " "<br>" " "  | 2,650   |

## B.—COMPULSORY IRRIGATION CHARGES.

| Irrigation and Water Supply District. | Area of District in Acres. | Area at present Irrigable in Acres. | Water Rights apportioned (including extra Rights) in Acre-feet. | Compulsory Charge per Acre-foot of Water Right. | Period of Charge.                         |
|---------------------------------------|----------------------------|-------------------------------------|---|---|---|
| 1. BACCHUS MARSH ..                   | 6,702                      | 3,309                               | 3,309   | 20s.  | 1st October, 1913, to 30th April, 1914    |
| 2. COHUNA .. .. .                     | 35,019                     | 23,143                              | 23,143  | 5s.   | 1st September, 1913, to 30th April, 1914  |
| 3. DINGEE .. .. .                     | 4,893                      | 4,552                               | 1,139   | 6s  | 1st October, 1913, to 30th April, 1914    |
| 4. GANNAWARRA ..                      | 28,002                     | 11,904                              | 11,904  | 5s.   | 1st September, 1913, to 30th April, 1914  |
| 5. KOONDROOK ..                       | 52,791                     | 14,123                              | 14,123  | 5s.   | 1st September, 1913, to 30th April, 1914. |
| 6. MERBEIN .. .. .                    | 5,862                      | 5,264                               | 13,119  | 12s.  | 15th August, 1913, to 30th April, 1914    |
| 7. NYAH .. .. .                       | 2,931                      | 2,411                               | 6,009   | 12s.  | 15th August, 1913, to 30th April, 1914.   |
| 8. ROCHESTER .. ..                    | 82,051                     | 22,165                              | 22,165  | 5s.   | 1st October, 1913, to 30th April, 1914    |
| 9. RODNEY .. .. .                     | 265,464                    | 180,659                             | 46,931  | 5s.   | 1st October, 1913, to 30th April, 1914.   |
| 10. SHEPPARTON ..                     | 18,936                     | 17,201                              | 17,201  | 5s.   | 1st October, 1913, to 30th April, 1914.   |
| 11. SWAN HILL .. ..                   | 13,498                     | 11,059                              | 11,059  | 5s.   | 1st September, 1913, to 30th April, 1914  |
| 12. TONGALA .. .. .                   | 25,307                     | 18,937                              | 18,937  | 5s.   | 1st October, 1913, to 30th April, 1914    |
| 13. TRAGOWEL PLAINS                   | 180,402                    | 122,333                             | 24,483  | 6s.   | 1st September, 1913, to 30th April, 1914  |

## CONTRACTS.

## STATEMENT OF CONTRACTS ENTERED INTO DURING THE YEAR ENDED 30TH JUNE, 1914.

| No.  | Name of Contractor.          | Work or Supply.                                    | Amount<br>(Loan and Vote). |    |    |
|------|------------------------------|--|----------------------------|----|----|
|      |                              |  | £                          | s. | d. |
| 1125 | Jno. Dickie .. .. .          | Portion Dickie's Channel, Karkaroc .. ..           | 89                         | 16 | 10 |
| 1126 | S. H. McLean .. .. .         | Portion Wilhelmina Channel, Karkaroc .. ..         | 170                        | 2  | 1  |
| 1127 | A. J. Fisher .. .. .         | Portion Wilhelmina Channel, Karkaroc .. ..         | 139                        | 0  | 0  |
| 1128 | S. H. McLean .. .. .         | Portion Wilhelmina Channel, Karkaroc .. ..         | 132                        | 9  | 9  |
| 1129 | A. J. Fisher .. .. .         | Portion Wilhelmina Channel, Karkaroc .. ..         | 112                        | 0  | 0  |
| 1130 | C. W. Croft .. .. .          | Portion Little Nicholson Channel, Karkaroc .. ..   | 88                         | 5  | 4  |
| 1131 | John McGee .. .. .           | Portion Little Nicholson Channel, Karkaroc .. ..   | 121                        | 0  | 0  |
| 1132 | A. E. Cartwright .. .. .     | Portion Little Nicholson Channel, Karkaroc .. ..   | 84                         | 6  | 0  |
| 1133 | A. J. Fisher .. .. .         | Portion Little Nicholson Channel, Karkaroc .. ..   | 85                         | 0  | 0  |
| 1137 | Jno. Wilson .. .. .          | Channel Meter Wheels .. .. .                       | 935                        | 14 | 2  |
| 1138 | A. Rangott .. .. .           | Portion Dickie's Channel, Karkaroc .. ..           | 148                        | 0  | 0  |
| 1139 | Dunstan and Fudge .. .. .    | Erection of Quarters, Pyramid Hill .. ..           | 699                        | 14 | 11 |
| 1140 | A. E. Perry .. .. .          | Portion Wilhelmina Channel, Karkaroc .. ..         | 125                        | 1  | 3  |
| 1141 | W. Rangott .. .. .           | Lalbert-Waitchie Channel, Sea Lake .. ..           | 52                         | 0  | 0  |
| 1142 | A. C. McLean .. .. .         | Portion Pier Millan Channel, Sea Lake .. ..        | 194                        | 10 | 0  |
| 1143 | A. C. McLean .. .. .         | Portion Pier Millan Channel, Sea Lake .. ..        | 131                        | 15 | 0  |
| 1144 | W. J. Theobald .. .. .       | Portion Lake Tyrrell Channel, Sea Lake .. ..       | 212                        | 8  | 0  |
| 1145 | W. J. Theobald .. .. .       | Portion Lake Tyrrell Channel, Sea Lake .. ..       | 115                        | 5  | 0  |
| 1146 | F. W. Kurz .. .. .           | Enlargement of Federal Tank, Ouyen .. ..           | 66                         | 0  | 0  |
| 1147 | J. Torney .. .. .            | Tank, Quinn's Reserve, Ouyen .. ..                 | 66                         | 13 | 4  |
| 1148 | J. Torney .. .. .            | Tank, Laity's Reserve, Kia .. ..                   | 70                         | 16 | 8  |
| 1149 | C. P. Mills .. .. .          | Tank, Ross Reserve, Tiega .. ..                    | 140                        | 13 | 4  |
| 1150 | C. P. Mills .. .. .          | Tank, Copi Siding, Walpeup East .. ..              | 140                        | 13 | 4  |
| 1151 | C. P. Mills .. .. .          | Tank, Yellumjip-road, Timberoo .. ..               | 140                        | 13 | 4  |
| 1152 | C. P. Mills .. .. .          | Tank, Guiney's Reserve, Tiega .. ..                | 140                        | 13 | 4  |
| 1153 | Jas. Crothers .. .. .        | Portion Joop Channel, Karkaroc .. ..               | 204                        | 0  | 0  |
| 1154 | W. F. McPherson .. .. .      | Portion Dickie's Channel, Karkaroc .. ..           | 135                        | 0  | 0  |
| 1155 | Jno. O'Donnell .. .. .       | Tank, Lowan Tank Reserve, Walpeup East .. ..       | 62                         | 10 | 0  |
| 1156 | Jno. O'Donnell .. .. .       | Tank, Carter's Tank Reserve, Timberoo .. ..        | 133                        | 6  | 8  |
| 1157 | Jno. O'Donnell .. .. .       | Tank, McCabe's Reserve, Walpeup East .. ..         | 62                         | 10 | 0  |
| 1158 | Jno. O'Donnell .. .. .       | Tank, Foley's Plain Reserve, Walpeup East .. ..    | 58                         | 6  | 8  |
| 1159 | Jno. O'Donnell .. .. .       | Tank, Pigeon Tank Reserve, Walpeup East .. ..      | 58                         | 6  | 8  |
| 1161 | V. Miete .. .. .             | Portion Minapre Extension Channel, Karkaroc .. ..  | 71                         | 15 | 0  |
| 1162 | H. E. G. Robertson .. .. .   | Portion Minapre Extension Channel, Karkaroc .. ..  | 94                         | 10 | 0  |
| 1163 | Wm. Dole .. .. .             | Portion Kalpienung Channel, Sea Lake .. ..         | 195                        | 10 | 0  |
| 1164 | Jas. Jordan .. .. .          | Firewood, Nyah .. .. .                             | 270                        | 16 | 8  |
| 1165 | Murphy Brothers .. .. .      | Tank, Underbool, Walpeup West .. ..                | 170                        | 0  | 0  |
| 1166 | Featherby and Fuller .. .. . | Tank, Hungry Hut Reserve, Walpeup East .. ..       | 62                         | 10 | 0  |
| 1167 | Leonard W. Martin .. .. .    | Storage Tank No. 1, Berriwillock, Sea Lake .. ..   | 112                        | 15 | 10 |
| 1168 | M. Malone .. .. .            | Deviation Cussen Channel, Rodney .. ..             | 812                        | 10 | 6  |
| 1169 | Murphy Brothers .. .. .      | Tank, Welshman's Reserve, Walpeup West .. ..       | 170                        | 0  | 0  |
| 1171 | Jno. O'Donnell .. .. .       | Tank, Kattoong, Walpeup West .. ..                 | 133                        | 6  | 8  |
| 1172 | Jno. O'Donnell .. .. .       | Tank, Daalko, Walpeup West .. ..                   | 132                        | 7  | 11 |
| 1173 | J. McDonald .. .. .          | Tank, Tiega, Walpeup West .. ..                    | 66                         | 13 | 4  |
| 1181 | Murphy Brothers .. .. .      | Storage Tanks, Pier Millan, Tyrrell District .. .. | 830                        | 9  | 0  |
| 1182 | Chas. Hoatson .. .. .        | Firewood, Long Lake .. .. .                        | 115                        | 4  | 0  |
| 1183 | G. A. Gill .. .. .           | Tank, Cowangie, Walpeup West .. ..                 | 33                         | 0  | 0  |
| 1184 | W. L. Mead .. .. .           | Tank, Walpeup Township, Walpeup East .. ..         | 129                        | 3  | 4  |
| 1185 | Jno. Mengler .. .. .         | Tank, Paignie, Walpeup East .. ..                  | 62                         | 0  | 0  |
| 1186 | Jno. O'Donnell .. .. .       | Tank, Paignie, Walpeup East .. ..                  | 66                         | 4  | 0  |
| 1187 | E. A. Pickering .. .. .      | Portion Burton Channel, Swan Hill .. ..            | 129                        | 17 | 6  |
| 1188 | A. O. Symes .. .. .          | Tank, Walpeup East .. .. .                         | 60                         | 8  | 4  |
| 1189 | Jno. O'Donnell .. .. .       | Tank, Timberoo, Walpeup East .. ..                 | 66                         | 3  | 11 |
|      |                              | Carried forward .. .. .                            | 8,901                      | 17 | 8  |

CONTRACTS ENTERED INTO DURING THE YEAR ENDED 30TH JUNE, 1914—*continued.*

| No.  | Name of Contractor.                  | Work or Supply.                                      | Amount<br>(Loan and Vote). |
|------|--------------------------------------|--|----------------------------|
|      |                                      | Brought forward .. ..                                | £ s. d.<br>8,901 17 8      |
| 1190 | W. Nancarrow .. ..                   | Portion Kaneira Tank Channel, Sea Lake ..            | 55 10 0                    |
| 1191 | W. Ferguson .. ..                    | Portion Burton Channel, Swan Hill .. ..              | 70 8 0                     |
| 1192 | E. M. Ferguson .. ..                 | Portion Burton Channel, Swan Hill .. ..              | 68 11 2                    |
| 1193 | A. J. Baker .. ..                    | Portion Burton Channel, Swan Hill .. ..              | 104 9 0                    |
| 1194 | Dunstan Bros. .. ..                  | Portion Burton Channel, Swan Hill .. ..              | 36 5 0                     |
| 1195 | Dunstan Bros. .. ..                  | Portion Burton Channel, Swan Hill .. ..              | 56 2 0                     |
| 1196 | Angus McInnes .. ..                  | Portion Burton Channel, Swan Hill .. ..              | 151 2 0                    |
| 1197 | Angus McInnes .. ..                  | Portion Burton Channel, Swan Hill .. ..              | 192 16 0                   |
| 1198 | Thos. Wakefield .. ..                | Portion Burton Channel, Swan Hill .. ..              | 128 16 9                   |
| 1199 | Welch Perrin and Co. .. ..           | Centrifugal Pump and Switchboard, Hopetoun ..        | 139 10 0                   |
| 1200 | Thos. Phyland .. ..                  | Portion Burton Channel, Swan Hill .. ..              | 136 9 4                    |
| 1201 | Thos. Phyland .. ..                  | Portion Burton Channel, Swan Hill .. ..              | 117 19 7                   |
| 1202 | Thos. Phyland .. ..                  | Portion Burton Channel, Swan Hill .. ..              | 116 15 10                  |
| 1203 | G. P. Conlon .. ..                   | Five bore-holes, Walpeup West .. ..                  | 1,125 0 0                  |
| 1206 | Ryan and Carrolan .. ..              | Tank, Kia Siding, Walpeup East .. ..                 | 64 0 0                     |
| 1207 | F. W. Kurz .. ..                     | Tank, Boorongie, Walpeup East .. ..                  | 70 10 0                    |
| 1208 | C. H. Dunkley .. ..                  | Tank, Nungah Siding, Walpeup East .. ..              | 62 10 0                    |
| 1209 | C. Monteath and Sons .. ..           | Cast-iron Pipes and Fittings, Werribee ..            | 1,723 8 0                  |
| 1210 | K. Herson .. ..                      | Portion Berriwillock Tank Channel, Sea Lake ..       | 43 0 0                     |
| 1211 | Renney and Anderson .. ..            | Portion Kaneira Tank Channel, Sea Lake ..            | 68 6 8                     |
| 1212 | A. McInnes .. ..                     | Fencing, Gunbower Channel, Kow Swamp ..              | 32 2 10                    |
| 1213 | J. Danks and Son Pty. Ltd. .. ..     | Cast-iron Pipes and Fittings, Bendigo ..             | 1,078 0 3                  |
| 1214 | Australian Wood Pipe Co. Ltd. .. ..  | Wood Stave Pipes, Bendigo .. ..                      | 242 4 0                    |
| 1215 | Jas. Walsh .. ..                     | Portion Berriwillock Tank Channel, Sea Lake ..       | 48 10 5                    |
| 1219 | H. A. Hunt .. ..                     | Water Bailiff's Quarters, Cohuna .. ..               | 297 0 0                    |
| 1220 | Australian Portland Cement Co. .. .. | 3,000 Casks Cement .. ..                             | 1,625 0 0                  |
| 1221 | D. Mitchell .. ..                    | 3,000 Casks Portland Cement .. ..                    | 1,725 0 0                  |
| 1222 | Determined.                          |  |                            |
| 1224 | Thos. Campbell .. ..                 | Tanks, Allotments 1 and 2, Gnarr, Walpeup West ..    | 54 3 4                     |
| 1225 | Thos. Campbell .. ..                 | Tank, Allotment 10, Gnarr, Walpeup West ..           | 93 15 0                    |
| 1226 | L. Moore .. ..                       | Portion of Burton Channel, Swan Hill .. ..           | 68 10 0                    |
| 1227 | Renney and Anderson .. ..            | Portion Berriwillock Tank Channel, Sea Lake ..       | 38 14 7                    |
| 1230 | J. Eadie .. ..                       | Erection of Offices and buildings, Rochester ..      | 891 17 1                   |
| 1231 | Trench and Moran .. ..               | Reservoir, Werribee River, near Melton ..            | 52,520 0 0                 |
| 1232 | W. W. Moore and Sons Pty. Ltd. .. .. | Bailiffs' Quarters, Murchison and Mooroopna ..       | 526 16 6                   |
| 1233 | Determined.                          |  |                            |
| 1234 | Jno. O'Donnell .. ..                 | Tank, Parish of Kattyong, Walpeup East .. ..         | 90 12 6                    |
| 1239 | C. Monteath and Sons .. ..           | Cast-iron Pipes and Special Castings, Castlemaine .. | 544 17 0                   |
| 1240 | J. Spellacy .. ..                    | Firewood, Merbein .. ..                              | 1,225 0 0                  |
| 1241 | Janet Krake .. ..                    | Firewood, Merbein .. ..                              | 300 0 0                    |
| 1242 | Jas. R. Smith .. ..                  | Firewood, Merbein .. ..                              | 300 0 0                    |
| 1243 | H. G. Banner .. ..                   | Firewood, Merbein .. ..                              | 324 7 6                    |
| 1244 | W. Schmedes .. ..                    | Firewood, Maldon .. ..                               | 270 16 8                   |
| 1245 | Wilson Brothers .. ..                | Drainage Channel, Cohuna .. ..                       | 241 9 0                    |
| 1246 | Angus J. Nicholson .. ..             | Levee Bank, Gunbower Channel, Kow Swamp ..           | 165 5 10                   |
| 1247 | Thos. Malone .. ..                   | Drainage Channel, Cohuna .. ..                       | 912 19 10                  |
| 1250 | Thompson and Co. Pty. Ltd. .. ..     | Centrifugal Pump and Steam-engine, Merbein ..        | 3,665 11 0                 |
| 1251 | B. Free and Co. .. ..                | Portion Main Eastern Channel, Wimmera ..             | 105 15 8                   |
| 1252 | B. Free and Co. .. ..                | Portion Main Eastern Channel, Wimmera ..             | 85 0 0                     |
| 1253 | B. Free and Co. .. ..                | Portion Main Eastern Channel, Wimmera ..             | 125 0 0                    |
| 1254 | A. C. McLean .. ..                   | Portion Main Eastern Channel, Wimmera ..             | 158 2 6                    |
| 1255 | A. C. McLean .. ..                   | Portion Main Eastern Channel, Wimmera ..             | 172 2 1                    |
| 1256 | A. J. McLean .. ..                   | Portion Main Eastern Channel, Wimmera ..             | 223 4 2                    |
| 1257 | Jno. Janetzki .. ..                  | Portion Main Eastern Channel, Wimmera ..             | 169 6 3                    |
| 1258 | Jno. Janetzki .. ..                  | Portion Main Eastern Channel, Wimmera ..             | 121 18 4                   |
| 1259 | Thompson and Co. Pty. Ltd. .. ..     | C.I. and Steel Pipes, Merbein .. ..                  | 714 0 0                    |
| 1260 | G. Long .. ..                        | Firewood, Nyah .. ..                                 | 225 0 0                    |
| 1261 | J. Nicholas .. ..                    | Firewood, Nyah .. ..                                 | 225 0 0                    |
| 1262 | R. Harris .. ..                      | Firewood, Nyah .. ..                                 | 84 7 6                     |
|      |                                      | Carried forward .. ..                                | 83,124 16 10               |

CONTRACTS ENTERED INTO DURING THE YEAR ENDED 30TH JUNE, 1914—continued.

| No.  | Name of Contractor.              | Work or Supply.                             | Amount<br>(Loan and Vote). |
|------|----------------------------------|---|----------------------------|
|      |                                  |   | £ s. d.                    |
|      |                                  | Brought forward .. ..                       | 83,124 16 10               |
| 1263 | W. Mathers .. ..                 | Portion Avon Regulator Inlet Channel ..     | 360 11 4                   |
| 1264 | W. Mathers .. ..                 | Portion Avon Regulator Inlet Channel ..     | 351 11 3                   |
| 1265 | W. Mathers .. ..                 | Portion Avon Regulator Inlet Channel ..     | 359 1 3                    |
| 1266 | W. Mathers .. ..                 | Portion Avon Regulator Inlet Channel ..     | 359 15 4                   |
| 1268 | M. P. Ryan .. ..                 | Portion Avon Regulator Inlet Channel ..     | 279 3 5                    |
| 1269 | W. F. McPherson .. ..            | Portion Chillingollah Channel, Tyntynder .. | 92 1 3                     |
| 1270 | A. J. Fisher .. ..               | Portion Chillingollah Channel, Tyntynder .. | 149 0 0                    |
| 1271 | Cowley's Eureka Ironworks Co. .. | Two Multitubular Boilers, Merbein ..        | 1,606 10 0                 |
| 1272 | Welch, Perrin and Co. ..         | Two Feed Pumps, Merbein ..                  | 157 10 0                   |
| 1273 | B. T. McRae .. ..                | Portion Taylor's Channel, Tyntynder ..      | 68 5 10                    |
| 1274 | Thos. Lucardie .. ..             | Portion Gray's Channel, Tyntynder ..        | 80 7 0                     |
| 1275 | Thos. O'Keefe .. ..              | Portion Burra Channel, Tyntynder ..         | 67 16 1                    |
| 1276 | A. J. Fisher .. ..               | Portion Burra Channel, Tyntynder ..         | 137 15 1                   |
| 1277 | A. J. Fisher .. ..               | Portion Burra Channel, Tyntynder ..         | 109 0 0                    |
| 1278 | P. Curran .. ..                  | Portion Burra Channel, Tyntynder ..         | 74 19 10                   |
| 1279 | Jno. Johnston .. ..              | Portion Burra Channel, Tyntynder ..         | 77 13 9                    |
| 1280 | C. W. Croft .. ..                | Portion Tyenna Channel, Karkaroc ..         | 160 0 0                    |
| 1281 | W. J. Cavanagh .. ..             | Portion Tyenna Channel, Karkaroc ..         | 140 0 0                    |
| 1282 | E. M. Jones .. ..                | Portion Yaapect Channel, Karkaroc ..        | 52 10 0                    |
| 1283 | W. J. Crothers .. ..             | Portion Yaapect Channel, Karkaroc ..        | 104 3 4                    |
| 1284 | Jas. Crothers .. ..              | Portion Yaapect Channel, Karkaroc ..        | 108 6 8                    |
| 1285 | E. M. Jones .. ..                | Portion Yaapect Channel, Karkaroc ..        | 108 4 7                    |
| 1286 | J. A. McDonald .. ..             | Stone for Drain, Lance Creek Reservoir ..   | 83 6 0                     |
| 1287 | Jno. O'Donnell .. ..             | Tank, Parish of Tiega, Walpeup East ..      | 291 13 4                   |
| 1288 | The Commonwealth Cement Co. ..   | 3,000 Casks Cement .. ..                    | 1,650 0 0                  |
| 1289 | The Commonwealth Cement Co. ..   | 3,000 Casks Cement .. ..                    | 1,650 0 0                  |
| 1290 | T. Carty .. ..                   | Portion Tyenna Channel, Karkaroc ..         | 92 0 0                     |
| 1291 | P. Maloney .. ..                 | Cartage of Cement, Melton Dam ..            | 67 14 2                    |
| 1292 | W. F. McPherson .. ..            | Portion Moah Channel, Tyrrell ..            | 113 1 4                    |
| 1293 | W. F. McPherson .. ..            | Portion Watson's Channel, Sea Lake ..       | 136 1 6                    |
| 1294 | Jas. Robinson .. ..              | Main S. and D. Channel, Yelta District ..   | 207 6 8                    |
| 1295 | W. W. Moore and Sons Pty. Ltd.   | Three Timber Cottages for Channel Guards .. | 916 16 6                   |
| 1296 | Peter Wilson .. ..               | Drainage Channel, Cohuna (Determined) ..    | 25 7 5                     |
| 1298 | A. De Baere .. ..                | Portion Salmon's Channel, Karkaroc ..       | 93 8 4                     |
| 1299 | Jas. A. Gibson .. ..             | Portion Salmon's Channel, Karkaroc ..       | 103 16 8                   |
| 1300 | A. De Baere .. ..                | Portion Salmon's Channel, Karkaroc ..       | 43 6 8                     |
| 1301 | J. Hogan .. ..                   | Portion Moah Channel, Tyrrell ..            | 150 11 8                   |
| 1302 | "Zenith" Hoist Co. .. ..         | Channel Meter Wheels .. ..                  | 383 0 0                    |
| 1303 | Thompson and Co. Pty. Ltd.       | Centrifugal Pump, Sea Lake .. ..            | 231 0 0                    |
| 1304 | A. C. McLean .. ..               | Portion Main Eastern Channel, Wimmera ..    | 152 5 0                    |
| 1305 | J. W. Chatham .. ..              | Portion Areegra Channel, Sea Lake ..        | 98 10 8                    |
| 1306 | F. W. Kurz .. ..                 | Portion Donald Main Channel, Wimmera ..     | 196 0 0                    |
| 1307 | Determined.                      |   |                            |
| 1308 | S. H. McLean .. ..               | Portion Tyenna Channel, Karkaroc ..         | 120 0 0                    |
| 1309 | S. H. McLean .. ..               | Portion Tyenna Channel, Karkaroc ..         | 127 1 8                    |
| 1310 | G. Long .. ..                    | Firewood, Nyah .. ..                        | 253 2 6                    |
| 1311 | J. Giovanni .. ..                | Firewood, Nyah .. ..                        | 337 10 0                   |
| 1312 | H. J. Simmonds .. ..             | Firewood, Nyah .. ..                        | 168 15 0                   |
| 1313 | Robt. Harris .. ..               | Firewood, Nyah .. ..                        | 421 17 6                   |
| 1314 | C. J. Nicholas .. ..             | Firewood, Cohuna .. ..                      | 506 5 0                    |
| 1315 | Chas. O. Munzel .. ..            | Firewood, Cohuna .. ..                      | 131 5 0                    |
| 1316 | L. Bramley .. ..                 | Firewood, Cohuna .. ..                      | 254 3 4                    |
| 1317 | E. O. Heine .. ..                | Firewood, Cohuna .. ..                      | 125 0 0                    |
| 1318 | T. W. Church .. ..               | Firewood, Cohuna .. ..                      | 125 0 0                    |
| 1319 | W. T. Masters .. ..              | Firewood, Cohuna .. ..                      | 129 3 4                    |
| 1320 | D. V. Mannix .. ..               | Firewood, Cohuna .. ..                      | 225 0 0                    |
| 1321 | W. P. Hartley .. ..              | Firewood, Cohuna .. ..                      | 270 16 8                   |
| 1322 | A. McInnes .. ..                 | Firewood, Cohuna .. ..                      | 262 10 0                   |
|      |                                  | Carried forward .. ..                       | 98,271 18 9                |

CONTRACTS ENTERED INTO DURING THE YEAR ENDED 30TH JUNE, 1914—*continued.*

| No.  | Name of Contractor.            | Work or Supply.                             | Amount<br>(Loan and Vote). |
|------|--------------------------------|---|----------------------------|
|      |                                |   | £ s. d.                    |
|      |                                | Brought forward .. ..                       | 98,271 18 9                |
| 1323 | E. H. North .. ..              | Firewood, Cohuna .. ..                      | 262 10 0                   |
| 1324 | F. O. Wallin .. ..             | Firewood, Swan Hill .. ..                   | 301 5 0                    |
| 1325 | E. A. Olsen .. ..              | Firewood, Swan Hill .. ..                   | 191 13 4                   |
| 1326 | W. A. Fisher .. ..             | Portion Watson's Channel, Sea Lake .. ..    | 177 10 0                   |
| 1327 | W. J. Sinclair .. ..           | Tanks, Parish of Larundel .. ..             | 170 0 0                    |
| 1328 | Jas. O'Grady .. ..             | Pre-Heater and Steel Flues, Merbein .. ..   | 156 10 0                   |
| 1329 | H. B. Irwin .. ..              | Portion Main Eastern Channel, Wimmera .. .. | 117 17 4                   |
| 1330 | H. B. Irwin .. ..              | Portion Main Eastern Channel, Wimmera .. .. | 87 8 2                     |
| 1331 | Towk Bros. .. ..               | Portion Main Eastern Channel, Wimmera .. .. | 156 18 3                   |
| 1332 | Towk Bros. .. ..               | Portion Main Eastern Channel, Wimmera .. .. | 134 7 10                   |
| 1333 | Towk Bros. .. ..               | Portion Main Eastern Channel, Wimmera .. .. | 150 3 7                    |
| 1334 | John McGee .. ..               | Portion Salmon's Channel, Karkaroc .. ..    | 100 0 0                    |
| 1335 | M. Moloney .. ..               | Portion Donald Main Channel, Wimmera .. ..  | 209 0 0                    |
| 1336 | T. Moroney .. ..               | Portion Donald Main Channel, Wimmera .. ..  | 234 16 8                   |
| 1337 | F. T. Street .. ..             | Storage Tanks, Manangatang .. ..            | 761 2 6                    |
| 1338 | Australian Portland Cement Co. | 3,000 Casks Cement .. ..                    | 1,625 0 0                  |
| 1339 | Thos. O'Keefe .. ..            | Firewood, Nyah .. ..                        | 312 10 0                   |
| 1340 | H. B. Irwin .. ..              | Portion Donald Main Channel, Wimmera .. ..  | 309 16 2                   |
| 1341 | B. Free .. ..                  | Portion Main Eastern Channel, Wimmera .. .. | 148 5 0                    |
| 1342 | J. M. Harman .. ..             | Firewood, Koondrook .. ..                   | 131 5 0                    |
| 1343 | J. B. Greenway .. ..           | Firewood, Kroondrook .. ..                  | 131 5 0                    |
| 1344 | Arthur Fasham .. ..            | Firewood, Koondrook .. ..                   | 129 3 4                    |
| 1345 | Lindsay and McDonald Bros. ..  | Portion Donald Main Channel, Wimmera .. ..  | 202 16 3                   |
| 1347 | Murphy Bros. .. ..             | Portion Donald Main Channel, Wimmera .. ..  | 267 1 10                   |
|      |                                | Total .. ..                                 | 104,740 4 0                |

## STATEMENT OF CONTRACTS ENTERED INTO DURING THE YEAR ENDED 30TH JUNE, 1914, IN CONNEXION WITH BORING FOR WATER, CONSTRUCTION OF PUBLIC TANKS, AND CLEARING AND FORMING ROADS IN THE MALLEE. THESE WORKS ARE BEING CARRIED OUT BY THE COMMISSION, BUT THE EXPENDITURE IS MET BY EITHER THE LANDS DEPARTMENT OR THE PUBLIC WORKS DEPARTMENT.

| No.  | Name of Contractor.    | Work or Supply.                                    | Amount<br>(Loan and Vote). |
|------|------------------------|--|----------------------------|
|      |                        |  | £ s. d.                    |
| 1134 | Murphy Brothers .. ..  | Enlargement of Kookimboo Tank, North Tyrrell .. .. | 130 0 0                    |
| 1135 | Murphy Brothers .. ..  | Weet Weet Tank, North Tyrrell .. ..                | 210 0 0                    |
| 1136 | Murphy Brothers .. ..  | Bullock Flat Tank, North Tyrrell .. ..             | 152 1 8                    |
| 1160 | Jas. Rowett .. ..      | Tank, North Tyrrell .. ..                          | 233 15 0                   |
| 1170 | J. Torney .. ..        | Tank, South Boulka .. ..                           | 70 16 8                    |
| 1174 | Murphy Brothers .. ..  | Tank, Allotment 33, Pirro .. ..                    | 66 13 4                    |
| 1175 | Murphy Brothers .. ..  | Tank, Allotment 20, Pirro .. ..                    | 75 0 0                     |
| 1176 | Murphy Brothers .. ..  | Tank, Allotment 1, Pirro .. ..                     | 133 6 8                    |
| 1177 | Murphy Brothers .. ..  | Tank, Allotment 44, Piangil West .. ..             | 77 0 0                     |
| 1178 | Murphy Brothers .. ..  | Tank, Allotment 41, Piangil West .. ..             | 98 4 0                     |
| 1179 | Murphy Brothers .. ..  | Scorpion Tank, Turoar .. ..                        | 120 10 0                   |
| 1180 | Murphy Brothers .. ..  | Tanks, Woonack and Mittyack .. ..                  | 270 16 8                   |
| 1204 | McDonough Bros. .. ..  | Tank, Allotment 33, Boulka .. ..                   | 81 5 0                     |
| 1205 | McDonough Bros. .. ..  | Tank, Allotment 31, Boulka .. ..                   | 54 3 4                     |
| 1216 | A. J. O'Loughlin .. .. | Tank, Township Reserve, Carwarp West .. ..         | 66 0 0                     |
| 1217 | Jas. Robinson .. ..    | Tank, Reserve, Carwarp West .. ..                  | 193 15 0                   |
| 1218 | A. J. O'Loughlin .. .. | Tank, Allotment 8, Carwarp West .. ..              | 112 0 0                    |
| 1223 | W. A. Leach .. ..      | Tank, north of Parish of Nulkwyne .. ..            | 75 0 0                     |
| 1228 | W. J. Sinclair .. ..   | Tank, Allotment 12, Parish of Coonimur .. ..       | 88 0 0                     |
|      |                        | Carried forward .. ..                              | 2,308 7 4                  |

STATEMENT OF CONTRACTS ENTERED INTO DURING THE YEAR ENDED 30TH JUNE,  
1914, IN CONNEXION WITH BORING FOR WATER, ETC.—*continued.*

| No.  | Name of Contractor.       | Work or Supply.                               | Amount<br>(Loan and Vote). |
|------|---------------------------|---|----------------------------|
|      |                           |   | £ s. d.                    |
|      |                           | Brought forward .. .. .                       | 2,308 7 4                  |
| 1229 | Robt. Heath .. .. .       | Tank, north of Possum Flat Tank, Mirkoo ..    | 85 0 0                     |
| 1235 | Wm. Jas. Sinclair .. .. . | Tank, Allotment 78, Parish of Piangil West .. | 85 0 0                     |
| 1236 | C. P. Mills .. .. .       | Tank, Allotment 4, Parish of Dering .. .. .   | 133 0 0                    |
| 1237 | W. A. Leach .. .. .       | Tank, Allotment 61, Parish of Pirro .. .. .   | 76 0 0                     |
| 1238 | Jas. Forbes .. .. .       | Tank, Camp Reserve, Parish of Pirro .. .. .   | 94 16 1                    |
| 1248 | Jas. Rowett .. .. .       | Tanks, Parish of Larundel .. .. .             | 183 15 0                   |
| 1249 | Robt. Heath .. .. .       | Tank, Parish of Burra .. .. .                 | 85 0 0                     |
| 1267 | Wm. J. Sinclair .. .. .   | Bead Bush Tank, Turoar .. .. .                | 93 6 8                     |
| 1297 | Geo. A. Gill .. .. .      | Ivy Tank, Boulka .. .. .                      | 76 13 4                    |
| 1346 | Alfred Case .. .. .       | Tank, Allotment 40, Carwarp West .. .. .      | 85 0 0                     |
|      |                           | Total .. .. .                                 | 3,305 18 5                 |

PIECE WORK.

In addition to the contracts entered into, a large quantity of channel and other work was carried out as piece-work at current rates in the Cohuna, Rochester, Shepparton, Tongala, and Tragowel Plains irrigation districts, and in the Wimmera-Mallee, and North-West Mallee waterworks districts. This expenditure amounted to £25,000.

WORKS CARRIED ON OR COMPLETED DURING THE YEAR  
ENDED 30TH JUNE, 1914.

COLIBAN DISTRICT.

During the year that portion of the main Coliban channel between Elphinstone and Bendigo was cleaned out and repaired. The scheme for the improvement of the supply to Castlemaine, consisting of 2 miles of race, a pipe-head reservoir, and 30 chains of 9-in. main, was carried out at a cost of £1,600. The carrying out of this work will greatly improve the quality of the supply to Castlemaine. The Maldon reservoirs were cleaned out and general repairs effected.

Three miles of race were cut in the Harcourt District, which brought into use lands in the district which were not previously supplied.

The Eaglehawk syphon supplying the Raywood District was enlarged at a cost of £1,711, and provided an improved supply for the districts between Eaglehawk, Raywood, and Sebastian.

Extensive works were carried out for the improvement of the pipe reticulation of Bendigo. At White Hills 100 chains of 6 in. mains were laid. At Quarry Hill and Ironbark the small mains in several streets were replaced with 4 in. mains.

## IRRIGATION AND WATER SUPPLY DISTRICTS.

## RODNEY DISTRICT.

About 11 miles of new channels have been constructed during the past year to supply some 3,000 acres of land hitherto beyond reach of water; and about 6 miles of proposed additional channels have been surveyed. A number of existing channels have been remodelled, enlarged and strengthened. A large number of measuring boxes have been installed in both new and old channels, and several of the old timber bridges and culverts have been re-decked and otherwise renewed. Some 20,000 acres of lucerne and about 5,500 acres of orchard were irrigated last season.

## SHEPPARTON DISTRICT.

This district has been considerably extended during the year, and now embraces an area of 18,800 acres. Of this 16,800 acres are now subject to an irrigation charge.

A feature of the past year has been the subdivision of private properties, the owners dividing them into a number of small irrigable blocks, for which there seems to be a ready demand. Permanent improvements have been effected by the holders of closer settlement blocks themselves to the value of about £45,468, while 2,552 acres have been sown to lucerne and 1,098 acres planted to orchard.

Seven miles of new channels were constructed for the purpose of supplying additional lands brought under the irrigation charge. The total length of channelling now constructed in this district is 66 miles. Provision has been made for draining roads and blocks on that portion previously known as the No. 2 Estate by means of a main drain to the Broken River along the Benalla-road. A regulator has been placed in the main eastern channel to provide a better supply for a number of settlers.

## SWAN HILL DISTRICT.

Several channels have been remodelled, also new channels constructed and structures put in to serve land bought for closer settlement purposes. On vacant blocks 123 acres were graded and sown to lucerne, and in addition considerable channelling and fencing improvements were effected thereon. A main channel has been constructed to the area known as Burton's, which was recently purchased for closer settlement, and is to be included in the Swan Hill district. The land in question has been surveyed and subdivided for closer settlement into 59 holdings.

## DISTRICTS ADMINISTERED FROM KERANG CENTRE.

In the Koondrook District remodelling of channels and building of structures were continued, and some minor channel extensions carried out. A concrete drop and escape was built at the end of the northern main.

In the Kerang District the work of cleaning out and improving channels was further proceeded with, and concrete outlets were provided on Gumbower West Distributary Channel.

On the Kow Swamp storage, the flap doors on weir at entrance to storage and the greater part of lining of the flume known as Lawson's on the Macorna channel were renewed.

In connexion with the works for supplying the Kerang North-West Lakes, levees were constructed at low places along Box and Pyramid Creeks, and waterway through Hird's Swamp was improved. The Washpen Creek was cleared of vegetation and graded and deepened for a length of about 140 chains.

## DISTRICTS ADMINISTERED FROM COHUNA CENTRE.

Extensive drainage works have been carried out in Cohuna District. Two main schemes with outfall channels into the Barr Creek have been constructed as a relief to affected portions. Side drains into the main channels are now under construction.

It is proposed to amalgamate Gannawarra West with Gannawarra District, and to make the compulsory irrigation charge which is now levied on Gannawarra apply to the enlarged area.



In the Gannawarra West Irrigation and Water Supply District over 18 miles of main channel were remodelled in preparation for the introduction of this compulsory irrigation charge. The installation of some seventy-five meter outlets in Gannawarra District, to be used as a means of measuring the water supplied to irrigators, is now in progress.

#### DISTRICTS ADMINISTERED FROM LODDON CENTRE.

In Tragowel Plains District the installation of meter outlets has been practically completed. Three of the old wooden flumes have been replaced by concrete structures, and a considerable length of the worst part of the channels has been remodelled. It is anticipated that this will greatly facilitate the work of water distribution in the coming season. Work of channel improvement will be continued during the ensuing year.

The channel system of the Boort District has been improved by building new concrete and monier pipe flumes at Boort Lakes, Wandella Creek, and Lake Meering, while many of the channels have been cleaned out; a connecting channel has also been built to connect the Tragowel Plains system with the Loddon so that surplus water could be discharged.

The compulsory irrigation charge was introduced in the recently constituted Dinglee District, which is administered from Loddon Centre. The charge is based on a water right allotment of one-fourth acre-foot of water for each irrigable acre. It is proposed to increase the allotment next season to one-half acre-foot, and in the following season to one acre-foot of water to each irrigable acre.

#### ROCHESTER DISTRICT.

The channels in the Rochester District have been considerably extended during the past twelve months and now reach the area of 2,816 acres of Closer Settlement irrigation blocks near Echuca. In the vicinity of Tennyson, 18 miles west of Rochester, about 9 miles of channels are under construction. These extensions will add a considerable area to the present Rochester District.

In the Campaspe District the western channel has been improved, and the large flume thereon, which was beyond repair, has been replaced by a 3 feet concrete syphon. It is proposed to construct a new channel to supply some of the settlers in the southern portion of the Restdown Estate.

#### DEAKIN DISTRICT.

During the year 16 miles of channels have been constructed for the supply to the lauds recently purchased for irrigated closer settlement known as the Stanhope Estate. The work will be continued until the whole estate is reticulated.

A channel to prevent the flooding of the area adjoining the Redgum Swamp has been constructed connecting the Yambuna Creek with the Warrigal Creek. Cleaning out and repairing old channels have been carried out during the year.

#### TONGALA DISTRICT.

The Tongala District, comprising the two districts of Tongala and Koyuga, is now all subject to the compulsory irrigation charge. Seven miles of channels have been completed during the year, while a considerable number of structures to facilitate the supply of water and to command further areas have been provided.

#### BACCHUS MARSH--WERRIBEE SCHEME.

In Bacchus Marsh a very large area of land has been irrigated. The main supply channel has been made effective by reinforced concrete lining practically from end to end, while a number of the old Trust channels have, with a view to greater efficiency, been re-modelled and concrete lined.

Good progress has been made at Werribee, where channels, both earth and concrete, with necessary checks, drops, and culverts for the irrigation of about 5,400 acres, have been finished. The Melton Reservoir, with a storage capacity of about 10,000 acre feet, which, as previously stated, was to be built to supply this area, is now in course of construction.

A reticulation supply is being provided for the township of Werribee, the concrete service basin and water tower having already been built, while most of the pipe mains have been laid.

## MERBEIN DISTRICT.

The work of channel lining has been continued during the year, and several new channel extensions have also been constructed. As forecasted in last report, arrangements have been made for the erection of an additional pumping unit, and the contract for this is nearing completion. The new unit will be of a capacity of 50 cusecs, making, with the present plant, a total capacity of 100 cusecs.

The development at Merbein has been in every way satisfactory, and the prospects are very promising. In the country west of Merbein, known as the Yelta Waterworks District, the main domestic and stock supply channel has been extended and has now a length of some 23 miles.

## NYAH DISTRICT.

This district has made great progress during the year, and its future as a fruit area is assured. The lining of channels has been extended and some branch drainage channels constructed.

## WATERWORKS DISTRICTS.

## LONG LAKE DISTRICT.

Fifteen miles of new channels were constructed under contract during the year. The channel system of this district is now so well advanced that the greater portion of the year's work has been the extension of the existing channels beyond the boundaries of the district towards the channel from Lalbert to Waitchie. It is intended to include the country served by these extensions in the Long Lake District.

## TYNTYNDER DISTRICT.

Further progress has been made with the extensions of channels, especially to the westward towards the new railway line from Chillingollah to Manangatang. The country which is served by these channels will be added to the district next year. Owing to the difficulty of entering into satisfactory contracts in certain outlying portions of the district, the Commission constructed about 30 miles of channels with its own teams. In addition, about 15 miles were constructed under contract. It is proposed during the coming year to proceed with the construction of the high-level channel to supply the Burra District, and to serve some newly settled country in the parishes of Prooinga and Turoar.

## WIMMERA WATER SUPPLY.

The main channel system has been further extended by continuing the Dunmunkle division of the main eastern channel which connects with the proposed East Karkaroc main channel. The latter channel will be completed early next year. Its construction will enable water to be sent, wholly by channel, from Lake Lonsdale and the Wimmera River and from the proposed storage at Black Swamp to the eastern portion of the Karkaroc district, thus preventing the great waste entailed in sending, as at present, a supply down the Yarriambiack Creek.

Through the construction of the Richardson division of the main eastern channel which connects the Avon River with the Wimmera main supply system, a large volume has continuously, for ten months, been sent from Lake Lonsdale and the Wimmera River to supply the Birchip, Wycheproof, Sea Lake, and Tyrre Waterworks districts. During this period the Avon River, the previous source of supply, did not run at all, so that the whole supply of these districts had to be drawn from this new source.

The works connected with the new Avon Regulator at Batyo Catyo Swamp, referred to in the last report, have been substantially advanced. The diversion weir on the Avon River and the inlet channel to the regulator have been completed, and the Donald main channel, the outlet channel from this regulator, has been practically completed as far as Donald. Surveys are now being made for a projected extension of the latter channel, northwards and eastwards, for about 50 miles, through Corack East towards Wycheproof.

The construction of the Donald main channel to the relatively high country on the eastern side of the township of Donald has enabled the Commission to formulate a scheme for giving a very much improved supply to that township. Up to the present the local Trust has drawn on the unsatisfactory weir storage for its supply. The new scheme, however, provides an abundant and purer supply to the storages by gravitation. As the existing town works at Donald have been for some time practically obsolete, the Commission prepared an extensive scheme of improvement, which will fit in with the new source of supply referred to. This scheme will include a very large new concrete standpipe, with a capacity of 600,000 gallons; a battery of three 25-foot diameter windmills; and an auxiliary oil plant for pumping, and large new delivery and reticulation mains. The Commission, by arrangement with the local Trust, has started to carry out these works, which it is confidently expected will prove a great advantage to Donald.

On the western side of the Wimmera area it is proposed to proceed with the construction of the main western channel from the present termination of the main central channel, near Jung, so as to water, by gravitation, the Dimboola to Rainbow channel and branches and the greater part of the parishes of Kewell West and Wallup and vicinity, now supplied by pumping from the Wimmera River at Dooen.

During the coming year the construction of a storage at Black Swamp, about 5 miles south of Lake Lonsdale, will, as previously notified, be undertaken. This storage will have a capacity of about 17,000 acre-feet, with a useful average depth of about 14 feet. It will be supplied from Fyans Creek, by far the most reliable of all the tributaries of the Wimmera River. The storage will be used in conjunction with Lake Lonsdale, and should prove of the greatest value in supplementing the supply to the Wimmera and Mallee districts.

#### WESTERN WIMMERA AND WIMMERA UNITED DISTRICTS.

Further progress has been made with the remodelling of the old channels in these districts. Many miles of channelling were enlarged and regraded, the greater portion being in the Wimmera United District. Fifteen miles of new branch channels were also constructed; of these, some 13 miles were in the Western Wimmera District.

The works for the supply of Watchem, consisting of large earthen storages, concrete standpipe, windmill pumping plant and pipe reticulation, have been completed, and are now working satisfactorily.

A scheme for converting Whitton Swamp into a local storage, so as to give a greatly improved supply to Warracknabeal town and vicinity, has been proposed. Under the proposed scheme, Whitton Swamp will be embanked so as to contain a volume of 1,300 acre-feet, but this will be capable of enlargement. From this storage will be drawn supplies for Warracknabeal. The Commission has also prepared an extensive scheme of improvements to the town supply, which are urgently required, and will harmonize with the conditions of the new storage. The full scheme will be submitted shortly for approval by the local bodies, who will, of course, have to bear that portion of the cost of the scheme directly affecting the town.

#### BIRCHIP, WYCHEPROOF, SEA LAKE, AND TYRRELL DISTRICTS.

Good progress has been made with the extension of the channel system in these districts, over 80 miles having been constructed during the year. The works for the supply of Kaneira and Berriwillock have been completed. These works consist in each case of a large earthen storage, concrete standpipe, windmill pumping plant, and pipe reticulation. They are now satisfactorily supplying water to the townships.

A new waterworks district, known as Tyrrell, has been constituted during the year. It embraces 710 square miles of the parishes surrounding Lake Tyrrell, and extends in a northern direction beyond Manangatang, the terminus of the railway from Chillingollah. The new district includes about 200 square miles formerly in the Sea Lake district, as the conditions under which water is supplied to this area are similar to those of the remainder of the new district. During the next year the Tyrrell district will be extended to embrace the portions of the parishes of Boorong and Gorya, now in the Karkaroc district, and will later be further extended to take in portions of the parishes of Boorong, Gorya, and Tyenna, hitherto not in any waterworks district.

On account of the difficulty in securing satisfactory tenders, the Commission has continued the system of constructing channels with its own teams in the more remote portions of the Tyrrell district.

An extensive earthen storage at Nandaly the terminus of the Sea Lake to Pier Millan railway, has been constructed. Its capacity is over 200,000 cubic yards. Water from the Wimmera River and Lake Lonsdale will be turned into this storage early next year. Another extensive earthen storage tank at Manangatang, the terminus of the railway from Chillingollah, has been commenced. It will have a capacity of 62,000 cubic yards. When completed early in the coming year it will be filled from the Nyah pumps on the Murray River. Another large tank at Cocamba, on the same railway, is nearing completion. This tank, which will have a capacity of 16,000 cubic yards, will be filled early next year from the Wimmera-Lonsdale supply. These tanks should prove an excellent reserve for the outlying portions of the Tyrrell district.

Surveys for many miles of branch channels in the above districts are also being carried out.

#### KARKAROOC DISTRICT.

Good progress was made with the extension of the channel system of this district, 60 miles of new channels having been constructed and some miles of old channels remodelled. A large earthen storage, with a capacity of 170,000 cubic yards, at Yaapeet, the terminus of the new railway from Rainbow, has been commenced, and will shortly be finished. This will constitute a valuable reserve for the district surrounding it. The schemes for the supply of the townships of Beulah and Hopetoun are now complete. Next year the portions of the parishes of Boorong and Gorya, now in the Karkaroc district, will be excised and added to the Tyrrell district.

#### NORTHERN MALLEE WATER SUPPLY.

Steady progress in the provision of works for the water supply for the Northern Mallee has been made during the year. The expenditure has been £26,000. Of this, £4,250 has been spent on Loan Works in the Walpeup East and West Waterworks Districts.

#### TANKS. WALPEUP EAST AND WEST WATERWORKS DISTRICTS. MILDURA CONCESSION (YATPOOL AND CARWARP) AND NORTH TYRRELL AREAS.

During the year fifty-eight tanks of capacities varying from 2,000 to 15,000 cubic yards have been excavated. Twenty-three more are now in hand. Forty-two tanks had previously been constructed. The gross capacity of the total number—123—will be 700,000 cubic yards.

#### CARWARP PROPOSED WATERWORKS DISTRICT.

Contour surveys have been made of the parishes of Ginquam, Yatpool, Carwarp, Carwarp West, and part of Nurnurnemal, with a view to their supply by channel for domestic and other purposes by pumping from the Murray. Levels taken to Red Cliffs demonstrated the possibility of supply by pumping from the river at that point, and surveys are now in progress for the laying out of channels. It is proposed to constitute this area of 90,000 acres the Carwarp waterworks district, and to supply water on conditions similar to other waterworks districts.

#### BORING FOR WATER.

During the year thirteen bores have been sunk in the area known to be fresh water bearing. One more bore will complete the number it is proposed to put down for the present.

The line of bores running north from Murrayville, parallel with the South Australian boundary, has been continued. Four more were sunk during the year, making a total of six in this series. The sixth bore, some thirty-eight miles a

little to the west of north of Murrayville, showed that the limit of the fresh water bearing area in that direction had been reached. The mineral contents in grains per gallon of this series of bores were:—

| Bore.                      | Grains. |
|----------------------------|---------|
| No. 1 Manya ... ..         | 70      |
| No. 2 Boltons ... ..       | 82      |
| No. 3 Cliffs ... ..        | 143     |
| No. 4 Bell Bird ... ..     | 260     |
| No. 5 Pines ... ..         | 265     |
| No. 6 Millewa South ... .. | 584     |

The last is just about the limit for use by stock, but is unfit for domestic purposes. In the east the exploratory bore put down on the northern boundary of the parish of Dalko failed to strike fresh water, though having passed through all the usual water bearing beds down to a depth of 670 feet, when operations were discontinued.

It is now thought that the boundaries of the fresh water bearing area have been practically defined in the northern part of the basin.

#### ROAD CLEARING.

Over 540 miles of roads have been cleared and grubbed during the year. The total length of roads cleared since 1908 is over 2,100 miles.

#### GOULBURN HEADWORKS AND MAIN CHANNELS.

These works comprise the Goulburn Weir, the Goulburn-Waranga Channel, extending from the weir to Waranga Reservoir, a distance of 23 miles, the Waranga Reservoir—all of which are free headworks—the main channel extending westerly from the Waranga Reservoir to the Serpentine Creek, a distance of 92 miles, and the main eastern channel, which extends from the Goulburn Weir to the Shepparton district, a distance of 31½ miles. The total length of main channels is 146½ miles, the total storage being 218,000 acre-feet. The irrigation districts supplied are the Shepparton, Rodney, Deakin, Tongala, Rochester, Dingee, and Tragowel Plains.

Measuring weirs have been constructed in the supply channels taking off from Nos. 2 and 3 offtakes on the Goulburn-Waranga channel.

No work of any magnitude has been undertaken on the scheme, but necessary maintenance has been attended to, including the placing of a quantity of beaching and lignum fascines in the Waranga western channel.

#### DRAINAGE SCHEMES.

Surveys of the Kooweerup Swamp were completed and a scheme drawn up for the effective drainage of the swamp. Details of the scheme have already been published. So far settlers have been unable to agree as to whether they are willing to accept the scheme along with its financial responsibilities.

Surveys of the Cardinia Swamp area, adjacent to and to the west of Kooweerup Swamp, are in progress.

The Commission has also in hand the preparation of a scheme for the drainage of the Moe Swamp, and a survey party is now at work in that locality.

#### RIVER GAUGING.

As provided by section 38 of the *Water Act* 1905, the work of gauging and recording the flow of the rivers and streams in this State has been continued. The supply stored in reservoirs and the volumes used therefrom have also been recorded and published weekly. The total number of gauging stations in the State is now fifty-one. During the year the field observation and office work connected with these gaugings have been advanced. The results of gaugings to the end of the year 1912 have been published, and those for the year 1913 will shortly be made available.

### DIVERSION OF WATER.

In the exercise of the right of the State to the use and flow and control of water in rivers, creeks, streams or water-courses, lakes, lagoons, swamps or marshes, sanction to divert has been given in a large number of cases.

The number of authorized diversions in force is now —

|                              |     |     |     |     |     |
|------------------------------|-----|-----|-----|-----|-----|
| Yearly permits               | ... | ... | ... | ... | 733 |
| Flood permits (Murray River) |     |     | ... | ... | 9   |
| Licences                     | ... | ... | ... | ... | 17  |
|                              |     |     |     |     | 759 |
|                              |     |     |     |     | —   |

### NEW STORAGES.

A contract has been let for a dam at Melton, on the Werribee River, which will impound about 10,000 acre feet of water. Considerable progress on its construction has been made. The water of this reservoir will be allotted to the Werribee district, where more than 3,000 acres of land is now held by settlers, and about an equal area still awaits settlement.

The construction of the Sugarloaf reservoir on the Goulburn River has been recommended. This reservoir will hold 240,000 acre feet of water. It will be used to supplement the supply in the latter part of the season and will permit of more water being used by direct diversion from the river during the months of maximum discharge. It is estimated that an increase of 80,000 acre feet can be made in the use through direct diversion, and that in normal years the reservoir will thus make possible a regulated use of 320,000 acre feet above the volume now available. The recent rapid progress of settlement and extension of cultivation in all districts of the Goulburn scheme insures a demand for the water of this storage when completed.

Additional storage on the Murray River is needed. The water requirements of all Murray River districts are increasing each year, and this growing demand can only be met by increasing the available water supply for the latter half of the season through the construction of a large reservoir on the head waters. Such a reservoir would have great value in insuring an adequate water supply for the districts having allotted water rights, and would end the uncertainty that now besets irrigators who depend on the Kow Swamp scheme and the North-West Lakes.

During the year an investigation of the storage possibilities of the principal rivers in Gippsland has been entered upon. The valleys of the Bunyip, Tarago, Latrobe, Tangil, Macalister and Avon rivers have been examined, flying surveys on the Macalister and Avon rivers have been made, and the results and the possibilities of irrigation in connexion therewith are under consideration. Other streams are under examination.

### MURRAY RIVER WATERS.

In April of this year the Prime Minister of the Commonwealth and the Premiers of the three interested States met and agreed to resolutions embracing a scheme for conservation, control, and use of the waters of the river. This agreement, details of which have been published in full, now awaits ratification by the several Parliaments.

In the meantime, by direction of the Government, the Commission has co-operated with the Water Conservation authorities of New South Wales in testing sites likely to prove suitable for the storage of one million acre-feet capacity in the Upper Murray River, recommended by the Inter-State Conference of Engineers in its report of July, 1913.

### GOULBURN RIVER FLOOD PROTECTION.

As stated in last Report, the Commission, at the request of the Government, prepared a scheme for the protection of lands subject to flooding from the Goulburn River between Shepparton and the Murray. It was proposed to levy on landowners benefited an annual charge to meet the cost of the work, which had been actually commenced by the Commission. As a number of landowners objected both to the work and the financial responsibility which it would entail, and further asked that the work be not proceeded with, the Government has decided to withhold carrying it out until a majority of the landowners express a desire for the work, and undertake to meet all necessary payments.

### DRAINAGE IN COHUNA DISTRICT.

In the Cohuna district where the channels cross lands that formerly grew mallee and pine timber, seepage losses are excessive, and the large size of these channels makes lining so expensive as to be impracticable. There are also areas where too much water has been used in irrigation, and where there is a lack of drainage, both surface and underground, the only effective remedy is to construct main drains to serve as outlets for subsidiary open or tile drains. The State has undertaken the construction of these main outlet drains on the understanding that the irrigators will construct the subsidiary drains. Nine miles of main outlet drains, with depths varying from 5 feet to 9 feet, have been built at a cost of £3,800. The rise of the soil water level in Cohuna brought to the surface soluble salts in large quantities, and this, in connexion with the rise in the water level, has in places caused losses of both crops and trees. An inquiry has been held in regard to these matters, the losses of settlers have been determined, and a satisfactory adjustment has been made.

### CHANNEL LINING IN VARIOUS DISTRICTS.

In certain districts the lining of distributary channels has been adopted as the most effective means of preventing injury from seepage losses. In the Merbein district 380 chains of channel were lined with cement concrete at a cost of £3,000. In Bacchus Marsh district 180 chains of channel were lined at a cost of £2,200. In the Rochester district 67 chains, having a total area of 9,586 square yards, were lined at a cost of £501 13s. 8d., and 1,600 square yards of concrete lining, costing £86, was put down in the Shepparton district. At Bacchus Marsh and Merbein the soil is so pervious that much of both main and distributary channels will have to be lined. In the other districts named serious losses can be prevented by lining small sections.

### WORKS CONTROLLED BY OTHER AUTHORITIES.

During the year a number of works were carried out by Waterworks Trusts and other Authorities, on the approval of the Commission.

Four new Waterworks Trusts were constituted to provide and supervise supplies for the townships of Tongala, Wahgunyah, Winchelsea, and Yackandandah.

Newly installed services were given at Maffra, Morwell, and Warburton. Pipe extensions and other additions were made by the local authorities at Bairnsdale, Benalla, Charlton, Cobram, Colac, Dandenong, Dunolly, Echuca Borough, Euroa, Gisborne, Hamilton, Kyabram, Kyneton, Leongatha, Mildura, Numurkah, Rochester, Shepparton, Tatura, Warracknabeal, and Wangaratta.

In connexion with the Ballarat Water Supply the construction of the Moorabool Earthen Dam of 1,365 million gallons was commenced.

Proposals for improvement of the supply at Ararat, Bright, Cobram, Donald, Kilmore, Lancefield, Lorne, Macedon, Mildura, Murchison, Murtoa, Seymour, Swan Hill, Talbot, Warracknabeal, and Yea, together with new schemes for Cobden, Hepburn, Mornington Peninsula, Sale and Yarram were under investigation.

## GENERAL.

### INCREASE IN THE IRRIGATED ACREAGE.

During the year covered by this Report 317,287 acres were irrigated. This was an increase over the previous year of 67,304 acres, and an increase of 85,000 acres over 1907-08, which up to that time was the record year.

The actual development of irrigated agriculture was, however, much greater than the increase in acreage alone would indicate. In 1907-08, the greater part of the land was only irrigated once. It was emergency irrigation of unprepared land due to an abnormally dry season. Every year since there has been an increase in the acreage devoted to orchards and fodder crops, and consequently in the percentage of the irrigated areas which each year is watered from three to six times instead of only once.

That the large area irrigated in 1907-08 was due to the dry season was shown by the decline in the irrigated acreage which took place in the two succeeding years of ample rainfall. So great was this decline that in 1909-10 the irrigated acreage was little more than half that of two years before. Since then the increase in irrigated acreage has been continuous and rapid, as is shown by diagrams 1 and 2, inserted herein.

### INFLUENCE OF CLOSER SETTLEMENT.

Closer settlement was made the basis of future irrigation development in 1909-10. Since then progress has been continuous, and promises to absorb all the water which can be made available at a reasonable price in the future. This certainty of future growth is due to the fact that the character of agriculture in irrigation districts is changing. Instead of being only an adjunct to farming, irrigation is becoming the indispensable feature.

The relation of closer settlement to successful irrigation development is shown by the continuous extension of the irrigated acreage, and by the improvement in irrigation practices which has followed its introduction. These improved methods of watering and cultivation have brought about a marked increase in the average value of products, and in the selling price of land. Still more substantial evidences of the value of irrigation will be obtained after these settlements have passed the formative period, and the land has been properly prepared for watering, and settlers have become acquainted with intense culture and the skilful use of water. The following table shows how the irrigated acreage has increased since closer settlement was adopted, while diagrams 1 and 2 show graphically the yearly increase in the acreage of the crops produced under intense culture in this State.

TABLE.—SHOWING DECREASE IN IRRIGATED ACREAGE PRIOR TO 1909-10, AND INCREASE IN IRRIGATED ACREAGE SINCE ADOPTION OF CLOSER SETTLEMENT IN 1909-10.

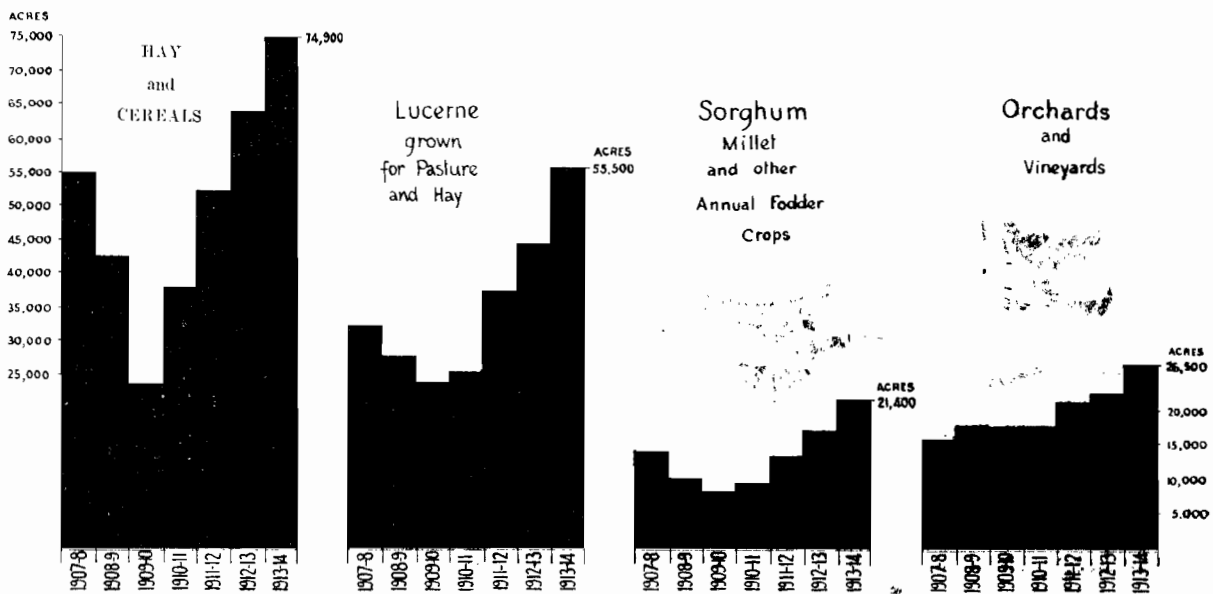
| Year.   | Area under Irrigated Culture. | Decrease. | Increase. |
|---------|-------------------------------|-----------|-----------|
|         | acres.                        | acres.    | acres.    |
| 1907-8  | 232,012                       | ...       | ...       |
| 1908-9  | 176,873                       | 55,139    | ...       |
| 1909-10 | 137,771                       | 39,102    | ...       |
| 1910-11 | 153,857                       | ...       | 16,086    |
| 1911-12 | 229,833                       | ...       | 75,976    |
| 1912-13 | 249,983                       | ...       | 20,150    |
| 1913-14 | 317,287                       | ...       | 67,304    |



Diagram No. 1  
 showing  
 Total Areas  
 under  
 Irrigated  
 Culture  
 Years 1907-8 to 1913-14



Diagram No. 2, showing Yearly Increase in Area of  
 Principal Crops under Irrigation.  
 Years 1907-8 to 1913-14.



## CLOSER SETTLEMENTS IN IRRIGATED AREAS.

Progress during the past year in the settlement of irrigable State lands has been steady. More than 90 per cent. of the area in Merbein, Nyah, Dingee, Rochester, and Shepparton districts is now taken up by settlers. More than half of the 43,000 acres unsold is in the unsubdivided part of the Stanhope Estate, where channels are now being built preparatory to throwing the land open to settlement. The lands now available are mainly in Tongala, Swan Hill, and Werribee districts. New settlers to the number of 383 have taken up allotments. There has been encouraging improvement in cultivation methods and a marked increase in the value of the products.

Owing to the limited capital of a majority of the settlers, much assistance had to be extended. This has included the erection of 128 dwelling houses at an aggregate cost of £23,760 7s. 1d. ; ploughing, grading and seeding to lucerne of 762 acres on 57 different holdings. Financial help has been extended by loans on improvements on 206 holdings, and by advances on stock on 129 holdings.

As few of the new settlers have had any previous experience in irrigation or with the methods of cultivation and rotation of crops, essential to complete success under irrigation, it has been necessary to organize a special staff to advise and assist beginners and keep the Commission informed of their methods and progress. The general supervision of this work is intrusted to two officers who have had wide experience in both engineering and irrigated agriculture. In each district there is a local officer who can be consulted by settlers at all times, and who visits, as occasion requires, every holding in the area under his control, and reports on improvements made on the crops being grown and on the area cultivated. These reports of the district advisers furnish a reliable record regarding the agricultural progress made by each individual settler and the districts as a whole. In cases of failure or partial failure all apparent causes, with the advice given, are reported.

In addition to this continuous and systematic supervision the settlements have been visited during the year by a number of recognised authorities in irrigation and agriculture who have given practical advice to the settlers and submitted a number of reports which have been published and supplied to the settlers. Further expert advice has been furnished by the officers of the Department of Agriculture, who make frequent visits to all the settlements.

The details of settlement and financial statement will be given in the Report of the Lands Purchase and Management Board.

## INFLUENCE OF INTENSE CULTURE ON WATER REQUIREMENTS.

Lands devoted to orchards or fodder crops require more frequent and copious watering than lands devoted to cereals and native grass. One of the results of extending the area devoted to intense culture is an increase in the water requirements of the land irrigated. The reports of district officers show that during the past season the average amount of water applied to lucerne would cover the land to a depth of 28 inches, the average amount applied to orchards would cover the land to a depth of 19 inches, while the average amount applied to grass and cereals would have covered the ground to a depth of only 11 inches. Realizing that Nyah and Merbein would be mostly orchard areas, the water-right allotment was, at the outset, made  $2\frac{1}{2}$  acre feet for each acre of land. In other closer settlements where holdings are larger and the kind of agriculture to be adopted was somewhat uncertain, the water-right allotments have been made smaller—usually one acre foot of water for each acre of irrigable land. As the area in these districts brought under intense culture is increased, the allotments will also have to be increased, and plans for future development should contemplate providing two acre feet of water for each acre of land suited to intense culture. This has been anticipated in the recent construction of channels which have been made large enough to deliver the increased allotment.

## ADMINISTRATION.

---

### AMALGAMATION OF DISTRICTS.

The Koyuga and Tongala districts have been united so as to form one district to be known as Tongala Irrigation and Water Supply District. It is proposed to similarly unite the Gannawarra and Gannawarra West districts under the name of Gannawarra Irrigation and Water Supply District.

### EXTENSIONS AND EXCISIONS.

It is proposed to extend the Rochester Irrigation District so as to include some 36,000 acres now served by channels constructed during the year. The waterworks districts of Long Lake, Tyntynder, and Tyrrell will be largely added to by the inclusion of new areas that are now being commanded by channel extensions. An area of some 2,000 acres was excised from the Tongala Irrigation District, and is again included in the Deakin District.

### NEW DISTRICTS CONSTITUTED.

The Tyrrell Waterworks District has been constituted, with an area of 390,000 acres, about 140,000 acres of which previously formed part of the Sea Lake Waterworks District. The Yelta Waterworks District, consisting of 31,000 acres adjoining the Merbein irrigation area, has been constituted, the supply being drawn from the Merbein plant.

### PROCLAMATION OF URBAN DISTRICTS AND DIVISIONS.

The townships of Berriwillock, Cohuna, Quambatook, Ultima and Watchem, having been provided with pipe supplies, have been proclaimed urban districts or divisions, and rates were levied during the year. It is intended to similarly reticulate the townships of Kaneira, Lascelles, Nyah, and Werribee during the ensuing year.

### NEW APPOINTMENTS AND TRANSFERS.

Mr. H. S. Mitchell, who has been for some years in the service of the Commission, was appointed Assistant-Engineer in local charge of the Birchip, Sea Lake, and Wycheproof districts in place of Mr. D. B. Scott, Inspector, who retired through ill-health after a long and valued service. Mr. D. P. Crosbie has been appointed Inspector-in-Charge of the newly constituted waterworks districts of Walpeup East and Walpeup West. Mr. D. A. Little, owing to his departure from the district, tendered his resignation as district secretary and collector at Bacchus Marsh, which the Commission accepted with regret. Mr. F. M. Engel has been appointed to act in his place.

### OFFICES IN COUNTRY CENTRES.

Offices for the conduct of the Commission's business have been erected at Rochester, and the residence at Pyramid Hill for the officer-in-charge of Loddon District has been finished and leased on the usual conditions.

### FIRE INSURANCE.

The Commission has been carrying the fire risks on its own buildings since July, 1909. The premiums thus saved now amount to £934. No losses have occurred since the date named.

### IRRIGATION SCHOLARSHIPS.

Mr. A. P. Flockart, who was awarded one of the first scholarships, of which particulars were set out in the last Report, has returned, after having pursued studies in America, in accordance with the terms of the scholarship. He is now in the service of the Commission. During last year two similar scholarships were awarded to Mr. John Allan Aird and Mr. Hubert Edward Harding, and these students are at present attending the University of California, United States, America.

## RECEIPTS, DISBURSEMENTS, AND ESTIMATES.

---

The total revenue of the Commission for the year was £194,857, an increase of £18,717 on the amount received for 1912-1913. The increase is fairly evenly divided between Irrigation Districts and Waterworks Districts.

The Coliban District shows an increase of £697 in revenue as compared with last year, while the net expenditure increased £217. The net return to the State on capital cost is still very low, being only 2·27 per cent., and although it has been materially improved since the date of the Commission taking control in 1905-1906, when the return was only 1·9 per cent., the annual deficit is still very large, reaching last year £21,035. As previously pointed out, the Commission is precluded by the Water Acts from increasing the rate revenue in this district, and, consequently, the financial improvement must be slow.

The revenue from the Irrigation and Water Supply Districts shows an increase of £9,507 over last year. The aggregate revenue deficit of all the Irrigation and Water Supply Districts is now £79,697, but this includes a new amount not previously charged to the districts of £1,755—for the interest on and maintenance of portions of the Goulburn Main Channel Scheme and Pyke's Creek Reservoir. Although the aggregate deficit was increased by £9,268 last year, this represents the smallest loss that has been incurred for some five years, and the result is bearing out the Commission's statement that, with a general introduction of the compulsory irrigation charge, the financial position of these districts would steadily improve.

There are thirty-three Waterworks Districts under the control of the Commission exclusive of the Coliban District, and in these the revenue returns are satisfactory. The deficit, which in 1908-1909 was £19,274, has now been reduced to £11,494, notwithstanding that since 1908-1909 a sum of £19,945 has been set apart for depreciation and redemption purposes.

The net expenditure for the year from annual votes was £107,511, which was only £4,179 over that of the previous year, notwithstanding that a number of new districts have been established. The total expenditure of £107,511 is exclusive of £2,582, which has been charged to capital. The expenditure of loan moneys amounted to £189,306, details of which are set out in this Report.

The estimates for 1914-15 show a decrease of £9,000 in receipts as compared with the previous year's estimates. This is owing to the Commission reducing its original estimate by some £25,000 to provide for the non-collection of rates in a number of large waterworks districts, which are very seriously affected by drought. It is anticipated that under normal conditions a large proportion of the arrears will be collected in 1915-16. The estimated disbursements show an increase of £11,500 over the estimate for 1913-14, but this increase would have been well covered by the receipts if provision had not to be made for drought conditions.

The present total interest charges on loans amount to £270,721. Of this amount £94,310 is not chargeable to any districts, being debitable against Free Head-works, Amounts Written Off, and Unexpended Balances, leaving £176,411 as debitable against the Commission and other Authorities. The amount available last year from the Revenues of the Commission and other Authorities to meet such interest was £138,853, as set out in the statement on the last page, which this year shows the actual amount available to meet interest instead of an estimated amount as in previous reports. Of the shortage shown the Coliban System is responsible, as indicated in a previous paragraph, for £21,035.

The loan liability of the State for Works of Water Supply at the close of the year was £8,036,263. Of this total £1,238,556 is for Free Head-works; £1,268,972 has been written off; £147,046 was advanced to some early-formed local Authorities; £66,528 has not been expended, and £224,766 has been paid off by Authorities. The balance, £5,090,395 is the sum in respect of which those benefited by the various works are liable for payment of interest.

## RECEIPTS AND DISBURSEMENTS.

STATEMENT of Moneys received and disbursed during the year ended 30th June, 1914.

| Works.  | REVENUE.       | EXPENDITURE,<br>exclusive of Interest, Redemption, and<br>Depreciation Charges. |  |   | EXCESS.                             |                                 |
|---|----------------|---|--|---|-------------------------------------|---------------------------------|
|   |                | From<br>Annual<br>Votes<br>and Special<br>Appropriation.                        | Deduct Capital<br>and Other<br>Expenditure<br>not<br>Chargeable to<br>Districts. | Net<br>Expenditure<br>on<br>Maintenance<br>and<br>Management. | Revenue<br>over Net<br>Expenditure. | Expenditure<br>over<br>Revenue. |
|   | £              | £   | £  | £   | £                                   | £                               |
| <b>Coliban</b> .. ..  | 39,066         | 12,497  | 907  | 11,590  | 27,476                              |                                 |
| <b>Other State Works—</b>   |                |   |  |   |                                     |                                 |
| Broken River .. ..  | 7              | 266   | ..   | 266   | ..                                  | 259                             |
| Goulburn .. ..  | 239            | 3,782   | ..   | 3,782   | ..                                  | 3,543                           |
| Kow Swamp .. ..   | 415            | 1,763   | ..   | 1,763   | ..                                  | 1,348                           |
| Lake Lonsdale .. ..   | 7              | 515   | ..   | 515   | ..                                  | 508                             |
| Loddon River .. ..  | 7              | 282   | ..   | 282   | ..                                  | 275                             |
| Lower Wimmera .. ..   | ..             | 75  | ..   | 75  | ..                                  | 75                              |
| North-West Lakes .. ..  | 360            | 378   | ..   | 378   | ..                                  | 18                              |
| <b>Irrigation Districts</b> .. ..   | 88,351         | 44,244  | 1,267  | 42,977  | 45,374                              |                                 |
| <b>Waterworks Districts—</b>  |                |   |  |   |                                     |                                 |
| Rural .. ..   | 46,193         | 25,944  | 408  | 25,536  | 20,657                              |                                 |
| Urban .. ..   | 13,517         | 3,658   | ..   | 3,658   | 9,859                               |                                 |
| <b>Licences, Diversions, Miscellaneous</b>  | 6,695          | 2,508   | ..   | 2,508   | 4,187                               |                                 |
|   | <b>194,857</b> | <b>95,912</b>   | <b>2,582</b>   | <b>93,330</b>   | <b>107,553</b>                      | <b>6,026</b>                    |
| <b>Not Revenue Producing—</b>   |                |   |  |   |                                     |                                 |
| River Gaugings, Surveys and<br>Reports, New Projects .. ..  | ..             | 4,861   | ..   | 4,861   | ..                                  | 4,861                           |
| Interstate Conference on Murray<br>Waters, Irrigation Engineer-<br>ing Scholarships .. ..                                 | ..             | 1,213   | ..   | 1,213   | ..                                  | 1,213                           |
| Waterworks Trusts .. ..   | ..             | 1,752   | ..   | 1,752   | ..                                  | 1,752                           |
| Boring for Water and<br>Road Clearing, }<br>Mallee, and Land }<br>Settlement .. }<br>Loan Works .. .. }<br>Administration | ..             | 3,824   | ..   | 3,824   | ..                                  | 3,824                           |
|   | ..             | 2,531   | ..   | 2,531   | ..                                  | 2,531                           |
| <b>Totals</b> .. ..   | <b>194,857</b> | <b>110,093</b>  | <b>2,582</b>   | <b>107,511</b>  | <b>107,553</b>                      | <b>20,207</b>                   |

## COLIBAN SYSTEM.

STATEMENT of Moneys received and disbursed during the year ended 30th June, 1914,  
and of interest charged at the rate of 4 per cent. on Capital Debts.

| Districts.          | Capital<br>Debit<br>at 30th<br>June, 1914. | Revenue.      | Disbursements and Interest Charged. |               |               | Excess.  |  |
|---------------------|--|---------------|-------------------------------------|---------------|---------------|--|--|
|                     |  |               | Disbursements.                      | Interest.     | Total.        | Revenue<br>over<br>Disbursements<br>and<br>Interest. | Disbursements<br>and Interest<br>over Revenue. |
|                     | £  | £             | £                                   | £             | £             | £  | £  |
| Coliban .. ..       | 1,196,915                                  | 37,718        | 11,017                              | 47,877        | 58,894        | ..   | 21,176   |
| Axe Creek .. ..     | 1,750                                      | 185           | 100                                 | 70            | 170           | 15   | ..   |
| Harcourt .. ..      | 14,109                                     | 1,163         | 473                                 | 564           | 1,037         | 126  | ..   |
| <b>Totals</b> .. .. | <b>1,212,774</b>                           | <b>39,066</b> | <b>11,590</b>                       | <b>48,511</b> | <b>60,101</b> | <b>141</b>   | <b>21,176</b>                                  |

## IRRIGATION AND WATER SUPPLY DISTRICTS.

STATEMENT of Moneys received and disbursed from 1st May, 1906, to 30th June, 1914; and of Interest, charged at the rate of 4 per cent. on Capital Debits; and also of Depreciation and Redemption charged, as at 30th June, 1914. (Free Head-works excluded.)

## RECEIPTS.

| District.                   | 1st May, 1906, to 30th June, 1913. | 1913-14. |                               |              |                          |        | Grand Total at 30th June, 1914. |
|-----------------------------|------------------------------------|----------|-------------------------------|--------------|--------------------------|--------|---------------------------------|
|                             |                                    | Rates.   | Compulsory Irrigation Charge. | Water Sales. | Interest, Miscellaneous. | Total. |                                 |
|                             | £                                  | £        | £                             | £            | £                        | £      | £                               |
| 1. Bacchus Marsh .. .. .    | 7,519                              | 560      | 3,114                         | 829          | 37                       | 4,540  | 12,059                          |
| 2. Boort .. .. .            | 13,661                             | 1,576    | ..                            | 1,331        | 13                       | 2,920  | 16,581                          |
| 3. Campaspe .. .. .         | 4,097                              | 648      | ..                            | 78           | 3                        | 729    | 4,826                           |
| 4. Cohuna .. .. .           | 34,481                             | 1,512    | 5,190                         | 516          | 154                      | 7,372  | 41,853                          |
| 5. Deakin .. .. .           | 17,746                             | 3,592    | ..                            | 1,034        | 17                       | 4,643  | 22,389                          |
| 6. Dingee .. .. .           | ..                                 | 113      | 335                           | 1            | 3                        | 452    | 452                             |
| 7. Dry Lake .. .. .         | 231                                | ..       | ..                            | ..           | 29                       | 29     | 260                             |
| 8. Gannawarra .. .. .       | 15,856                             | 622      | 2,554                         | 118          | 33                       | 3,327  | 19,183                          |
| 9. Gannawarra West .. .. .  | 6,819                              | 504      | ..                            | 936          | 2                        | 1,442  | 8,261                           |
| 10. Kerang .. .. .          | 27,498                             | 2,199    | ..                            | 2,784        | 14                       | 4,997  | 32,495                          |
| 11. Koondrook .. .. .       | 20,815                             | 1,059    | 3,245                         | 632          | 113                      | 5,049  | 25,864                          |
| 12. Merbein .. .. .         | 8,762                              | 162      | 5,725                         | 11           | 285                      | 6,183  | 14,945                          |
| 13. Nyah .. .. .            | 3,782                              | 85       | 2,939                         | 44           | 133                      | 3,201  | 6,983                           |
| 14. Rochester .. .. .       | 7,479                              | 1,040    | 4,478                         | 546          | 230                      | 6,294  | 13,773                          |
| 15. Rodney .. .. .          | 94,185                             | 6,764    | 11,407                        | 709          | 272                      | 19,152 | 113,337                         |
| 16. Shepparton .. .. .      | 2,628                              | 368      | 2,455                         | 219          | 13                       | 3,055  | 5,683                           |
| 17. Swan Hill .. .. .       | 17,776                             | 571      | 2,267                         | 587          | 116                      | 3,541  | 21,317                          |
| 18. Tongala .. .. .         | 3,923                              | 383      | 1,427                         | 219          | 20                       | 2,049  | 5,972                           |
| 19. Tragowel Plains .. .. . | 32,739                             | 1,515    | 7,123                         | 629          | 109                      | 9,376  | 42,115                          |
|                             | 319,997                            | 23,273   | 52,259                        | 11,223       | 1,596                    | 88,351 | 408,348                         |

## DISBURSEMENTS, AND INTEREST DEPRECIATION AND REDEMPTION CHARGED.

| District.                   | DISBURSEMENTS.                     |                          |                        |             |        |                           | INTEREST CHARGED.                  |                                     |                           | (A) DEPRECIATION.<br>(B) REDEMPTION. | Grand Total at 30th June, 1914. |
|-----------------------------|------------------------------------|--------------------------|------------------------|-------------|--------|---------------------------|------------------------------------|-------------------------------------|---------------------------|--------------------------------------|---------------------------------|
|                             | 1st May, 1906, to 30th June, 1913. | 1913-14.                 |                        |             |        | Total at 30th June, 1914. | 1st May, 1906, to 30th June, 1913. | 1st July, 1913, to 30th June, 1914. | Total at 30th June, 1914. |                                      |                                 |
|                             |                                    | Repairs and Maintenance. | Distribution of Water. | Management. | Total. |                           |                                    |                                     |                           |                                      |                                 |
|                             | £                                  | £                        | £                      | £           | £      | £                         | £                                  | £                                   | £                         | £                                    |                                 |
| 1. Bacchus Marsh .. .. .    | 2,148                              | 77                       | 502                    | 143         | 722    | 2,870                     | 5,648                              | 3,117                               | 8,765                     | ..                                   | 11,635                          |
| 2. Boort .. .. .            | 8,348                              | 560                      | 610                    | 138         | 1,308  | 9,656                     | 5,387                              | 756                                 | 6,143                     | ..                                   | 15,799                          |
| 3. Campaspe .. .. .         | 2,590                              | 58                       | 156                    | 92          | 306    | 2,896                     | 2,768                              | 365                                 | 3,133                     | ..                                   | 6,029                           |
| 4. Cohuna .. .. .           | 26,362                             | 939                      | 3,187                  | 386         | 4,512  | 30,874                    | 13,894                             | 2,521                               | 16,415                    | (A)4,114                             | 51,403                          |
| 5. Deakin .. .. .           | 9,128                              | 1,132                    | 713                    | 361         | 2,206  | 11,334                    | 13,349                             | 3,211                               | 16,560                    | ..                                   | 27,894                          |
| 6. Dingee .. .. .           | ..                                 | 11                       | 78                     | 5           | 94     | 94                        | ..                                 | 490                                 | 490                       | ..                                   | 584                             |
| 7. Dry Lake .. .. .         | 1                                  | ..                       | ..                     | ..          | ..     | 1                         | 232                                | 27                                  | 259                       | ..                                   | 260                             |
| 8. Gannawarra .. .. .       | 11,183                             | 582                      | 1,005                  | 194         | 1,781  | 12,964                    | 6,453                              | 1,121                               | 7,574                     | (A)1,274                             | 21,812                          |
| 9. Gannawarra West .. .. .  | 5,161                              | 48                       | 522                    | 71          | 641    | 5,802                     | 3,042                              | 618                                 | 3,660                     | (A) 612                              | 10,074                          |
| 10. Kerang .. .. .          | 15,788                             | 1,218                    | 812                    | 338         | 2,368  | 18,156                    | 11,968                             | 1,563                               | 13,531                    | (B) 500                              | 32,187                          |
| 11. Koondrook .. .. .       | 14,856                             | 519                      | 1,705                  | 339         | 2,563  | 17,419                    | 11,374                             | 2,822                               | 14,196                    | (A)1,876                             | 33,491                          |
| 12. Merbein .. .. .         | 9,968                              | 103                      | 4,256                  | 559         | 4,918  | 14,886                    | 4,051                              | 2,058                               | 6,109                     | (A)2,450                             | 23,445                          |
| 13. Nyah .. .. .            | 4,076                              | 202                      | 1,173                  | 202         | 1,577  | 5,653                     | 2,164                              | 872                                 | 3,036                     | (A)1,282                             | 9,971                           |
| 14. Rochester .. .. .       | 6,276                              | 795                      | 1,725                  | 483         | 3,003  | 9,279                     | 12,138                             | 6,263                               | 18,401                    | ..                                   | 27,680                          |
| 15. Rodney .. .. .          | 46,469                             | 2,964                    | 4,006                  | 842         | 7,812  | 54,281                    | 55,014                             | 12,496                              | 67,510                    | ..                                   | 121,791                         |
| 16. Shepparton .. .. .      | 2,461                              | 1,000                    | 508                    | 317         | 1,825  | 4,286                     | 2,982                              | 2,692                               | 5,674                     | ..                                   | 9,960                           |
| 17. Swan Hill .. .. .       | 16,497                             | 530                      | 1,667                  | 262         | 2,459  | 18,956                    | 4,744                              | 1,251                               | 5,995                     | (A)1,968                             | 26,919                          |
| 18. Tongala .. .. .         | 2,914                              | 636                      | 810                    | 217         | 1,663  | 4,577                     | 5,590                              | 3,207                               | 8,797                     | ..                                   | 13,374                          |
| 19. Tragowel Plains .. .. . | 19,115                             | 1,252                    | 1,701                  | 266         | 3,219  | 22,334                    | 15,246                             | 6,157                               | 21,403                    | ..                                   | 43,737                          |
|                             | 203,341                            | 12,626                   | 25,136                 | 5,215       | 42,977 | 246,318                   | 176,044                            | 51,607                              | 227,651                   | 14,076                               | 488,045                         |

## WATERWORKS DISTRICTS.

## RURAL DISTRICTS.

STATEMENT of Moneys received and disbursed from 1st July, 1906, to 30th June, 1914; and of Interest charged, at the rate of 4 per cent. on Capital Debts; and also of Depreciation and Redemption charged, as at 30th June, 1914. (Free Head-works excluded.)

## RECEIPTS.

| District.                           | 1st May, 1906, to 30th June, 1913. | 1913-14. |              |                             |        | Grand Total at 30th June, 1914. |
|-------------------------------------|------------------------------------|----------|--------------|-----------------------------|--------|---------------------------------|
|                                     |                                    | Rate.    | Water Sales. | Interest and Miscellaneous. | Total. |                                 |
|                                     | £                                  | £        | £            | £                           | £      | £                               |
| 1. Birchip .. .. .                  |                                    | 2,391    | 10           | 44                          | 2,445  | } 57,783                        |
| 2. Sea Lake .. .. .                 | } 45,133                           | 5,004    | ..           | 101                         | 5,105  |                                 |
| 3. Tyrrell .. .. .                  |                                    | 1,840    | ..           | 13                          | 1,853  |                                 |
| 4. Wycheproof .. .. .               |                                    | 3,196    | ..           | 51                          | 3,247  | } 19,617                        |
| 5. Karkaroo .. .. .                 | 14,229                             | 5,293    | ..           | 95                          | 5,388  |                                 |
| 6. Kerang, North-west Lakes .. .. . | ..                                 | 41       | ..           | ..                          | 41     | 41                              |
| 7. Long Lake .. .. .                | 25,716                             | 4,719    | 241          | 96                          | 5,056  | 30,772                          |
| 8. Tyntynder .. .. .                | 3,264                              | 1,536    | 43           | 35                          | 1,614  | 4,878                           |
| 9. Walpeup East .. .. .             | ..                                 | 183      | ..           | ..                          | 183    | 183                             |
| 10. Walpeup West .. .. .            | ..                                 | 220      | ..           | ..                          | 220    | 220                             |
| 11. Western Wimmera .. .. .         | 47,206                             | 8,252    | 887          | 65                          | 9,204  | 56,410                          |
| 12. Wimmera United .. .. .          | 56,596                             | 11,606   | 80           | 151                         | 11,837 | 68,433                          |
|                                     | 192,144                            | 44,281   | 1,261        | 651                         | 46,193 | 238,337                         |

## DISBURSEMENTS, AND INTEREST DEPRECIATION AND REDEMPTION CHARGED.

| District.                           | DISBURSEMENTS.                     |                          |                        |             |        |                           | INTEREST CHARGED.                  |                                     |                           |                                      | Grand Total at 30th June, 1914. |
|-------------------------------------|------------------------------------|--------------------------|------------------------|-------------|--------|---------------------------|------------------------------------|-------------------------------------|---------------------------|--------------------------------------|---------------------------------|
|                                     | 1st May, 1906, to 30th June, 1913. | 1913-14.                 |                        |             |        | Total at 30th June, 1914. | 1st May, 1906, to 30th June, 1913. | 1st July, 1913, to 30th June, 1914. | Total at 30th June, 1914. | (A) DEPRECIATION.<br>(B) REDEMPTION. |                                 |
|                                     |                                    | Repairs and Maintenance. | Distribution of Water. | Management. | Total. |                           |                                    |                                     |                           |                                      |                                 |
|                                     | £                                  | £                        | £                      | £           | £      | £                         | £                                  | £                                   | £                         | £                                    |                                 |
| 1. Birchip .. .. .                  | } 30,671                           | 2,408                    | 2,003                  | 686         | 5,097  | 35,768                    | 28,187                             | 6,872                               | 35,059                    | ..                                   | 70,827                          |
| 2. Sea Lake .. .. .                 |                                    |                          |                        |             |        |                           |                                    |                                     |                           |                                      |                                 |
| 3. Tyrrell .. .. .                  |                                    |                          |                        |             |        |                           |                                    |                                     |                           |                                      |                                 |
| 4. Wycheproof .. .. .               | } 4,963                            | 1,512                    | 587                    | 323         | 2,422  | 7,385                     | 8,043                              | 3,555                               | 11,598                    | ..                                   | 18,983                          |
| 5. Karkaroo .. .. .                 |                                    |                          |                        |             |        |                           |                                    |                                     |                           |                                      |                                 |
| 6. Kerang, North-west Lakes .. .. . | ..                                 | 29                       | 53                     | 38          | 120    | 120                       | ..                                 | 67                                  | 67                        | ..                                   | 187                             |
| 7. Long Lake .. .. .                | 17,754                             | 962                      | 2,024                  | 350         | 3,336  | 21,090                    | 6,479                              | 738                                 | 7,217                     | (a) 4,037                            | 32,344                          |
| 8. Tyntynder .. .. .                | 2,506                              | 468                      | 1,141                  | 139         | 1,748  | 4,254                     | 1,413                              | 388                                 | 1,801                     | ..                                   | 6,055                           |
| 9. Walpeup East .. .. .             | ..                                 | 143                      | ..                     | 69          | 212    | 212                       | ..                                 | 120                                 | 120                       | ..                                   | 332                             |
| 10. Walpeup West .. .. .            | ..                                 | 383                      | ..                     | 107         | 490    | 490                       | ..                                 | 60                                  | 60                        | (a) 150                              | 700                             |
| 11. Western Wimmera .. .. .         | 22,976                             | 2,623                    | 3,116                  | 852         | 6,591  | 29,567                    | 16,385                             | 3,121                               | 19,506                    | (a) 1,261<br>(b) 5,500               | 55,834                          |
| 12. Wimmera United .. .. .          | 28,333                             | 2,963                    | 1,807                  | 750         | 5,520  | 33,853                    | 21,622                             | 6,167                               | 27,789                    | (b) 5,000                            | 66,642                          |
|                                     | 107,203                            | 11,491                   | 10,731                 | 3,314       | 25,536 | 132,739                   | 82,129                             | 21,088                              | 103,217                   | 15,948                               | 251,904                         |

## WATERWORKS DISTRICTS.

## URBAN DISTRICTS.

STATEMENT of Moneys received and disbursed from 1st July, 1906, to 30th June, 1914 ; and of Interest charged, at the rate of 4 per cent. on Capital Debts ; and also of Drepreciation and Redemption charged, as at 30th June, 1914. (Free Head-works excluded.)

## RECEIPTS.

| District.                | 1st May, 1906, to 30th June, 1913. | 1913-14. |              |                             |        | Grand Total at 30th June, 1914. |
|--------------------------|------------------------------------|----------|--------------|-----------------------------|--------|---------------------------------|
|                          |                                    | Rate.    | Water Sales. | Interest and Miscellaneous. | Total. |                                 |
| 1. Bacchus Marsh .. .. . | 4,866                              | 542      | 349          | 5                           | 896    | 5,762                           |
| 2. Berriwillock .. .. .  | ..                                 | 45       | ..           | ..                          | 45     | 45                              |
| 3. Beulah .. .. .        | 243                                | 526      | 3            | 7                           | 536    | 779                             |
| 4. Birchip .. .. .       | 2,959                              | 728      | 209          | 24                          | 961    | 3,920                           |
| 5. Cohuna .. .. .        | ..                                 | 304      | ..           | ..                          | 304    | 304                             |
| 6. Corop .. .. .         | 28                                 | 27       | 5            | ..                          | 32     | 60                              |
| 7. Dimboola .. .. .      | 6,757                              | 593      | 718          | 31                          | 1,342  | 8,099                           |
| 8. Hopetoun .. .. .      | 414                                | 418      | 55           | 9                           | 482    | 896                             |
| 9. Jeparit .. .. .       | 417                                | 420      | 86           | 2                           | 508    | 925                             |
| 10. Koondrook .. .. .    | 209                                | 332      | 4            | 3                           | 339    | 548                             |
| 11. Lake Boga .. .. .    | 630                                | 228      | 36           | 9                           | 273    | 903                             |
| 12. Minyip .. .. .       | 1,765                              | 420      | 4            | 4                           | 428    | 2,193                           |
| 13. Natimuk .. .. .      | 2,191                              | 200      | 202          | 5                           | 407    | 2,598                           |
| 14. Rainbow .. .. .      | 2,217                              | 816      | 149          | 20                          | 985    | 3,202                           |
| 15. Rupanyup .. .. .     | 1,620                              | 329      | 101          | 4                           | 434    | 2,054                           |
| 16. Sea Lake .. .. .     | 1,418                              | 440      | 20           | 8                           | 468    | 1,886                           |
| 17. Ultima .. .. .       | ..                                 | 155      | ..           | 3                           | 158    | 158                             |
| 18. Watchem .. .. .      | ..                                 | 80       | 11           | ..                          | 91     | 91                              |
| 19. Wonthaggi .. .. .    | 7,294                              | 1,675    | 1,513        | Grant 500 }<br>90 }         | 3,778  | 11,072                          |
| 20. Woomelang .. .. .    | 161                                | 372      | 208          | 7                           | 587    | 748                             |
| 21. Wycheproof .. .. .   | 1,862                              | 412      | 44           | 7                           | 463    | 2,325                           |
|                          | 35,051                             | 9,062    | 3,717        | 738                         | 13,517 | 48,568                          |

## DISBURSEMENTS, AND INTEREST DEPRECIATION AND REDEMPTION CHARGED.

| District.                | DISBURSEMENTS.                     |                          |                        |             |                           | INTEREST CHARGED.                  |                                     |                           |         | (A) DEPRECIATION.<br>(B) REDEMPTION. | Grand Total at 30th June, 1914. |
|--------------------------|------------------------------------|--------------------------|------------------------|-------------|---------------------------|------------------------------------|-------------------------------------|---------------------------|---------|--------------------------------------|---------------------------------|
|                          | 1st May, 1906, to 30th June, 1913. | 1913-14.                 |                        |             | Total at 30th June, 1914. | 1st May, 1906, to 30th June, 1913. | 1st July, 1913, to 30th June, 1914. | Total at 30th June, 1914. |         |                                      |                                 |
|                          |                                    | Repairs and Maintenance. | Distribution of Water. | Management. |                           |                                    |                                     |                           | Total.  |                                      |                                 |
| 1. Bacchus Marsh .. .. . | £ 1,834                            | £ 12                     | £ 88                   | £ 70        | £ 170                     | £ 2,004                            | £ 2,067                             | £ 675                     | £ 2,742 | (a) 140<br>(b) 250                   | £ 5,136                         |
| 2. Berriwillock .. .. .  | ..                                 | 8                        | ..                     | 3           | 11                        | 11                                 | ..                                  | 64                        | 64      | ..                                   | 75                              |
| 3. Beulah .. .. .        | 48                                 | 3                        | 97                     | 37          | 137                       | 185                                | 232                                 | 272                       | 504     | (a) 4                                | 693                             |
| 4. Birchip .. .. .       | 1,105                              | 52                       | 263                    | 64          | 379                       | 1,484                              | 1,451                               | 421                       | 1,872   | (a) 132                              | 3,488                           |
| 5. Cohuna .. .. .        | ..                                 | 4                        | 63                     | 30          | 97                        | 97                                 | ..                                  | 137                       | 137     | (a) 21                               | 255                             |
| 6. Corop .. .. .         | ..                                 | ..                       | 10                     | 5           | 15                        | 15                                 | 19                                  | 19                        | 38      | ..                                   | 53                              |
| 7. Dimboola .. .. .      | 3,776                              | 193                      | 472                    | 104         | 769                       | 4,545                              | 1,285                               | 432                       | 1,717   | (a) 640<br>(b) 530                   | 7,432                           |
| 8. Hopetoun .. .. .      | 272                                | 5                        | 119                    | 33          | 157                       | 429                                | 148                                 | 225                       | 373     | ..                                   | 802                             |
| 9. Jeparit .. .. .       | 83                                 | 4                        | 47                     | 26          | 77                        | 160                                | 324                                 | 344                       | 668     | ..                                   | 828                             |
| 10. Koondrook .. .. .    | 124                                | 21                       | 89                     | 36          | 146                       | 270                                | 146                                 | 147                       | 293     | (a) 30                               | 593                             |
| 11. Lake Boga .. .. .    | 86                                 | 2                        | 11                     | 9           | 22                        | 108                                | 497                                 | 121                       | 618     | (a) 30                               | 756                             |
| 12. Minyip .. .. .       | 901                                | 20                       | 123                    | 31          | 174                       | 1,075                              | 1,147                               | 296                       | 1,443   | (a) 122                              | 2,640                           |
| 13. Natimuk .. .. .      | 329                                | 5                        | 22                     | 14          | 41                        | 370                                | 958                                 | 384                       | 1,342   | (b) 500                              | 2,212                           |
| 14. Rainbow .. .. .      | 562                                | 8                        | 89                     | 43          | 140                       | 702                                | 1,558                               | 463                       | 2,021   | (a) 200                              | 2,923                           |
| 15. Rupanyup .. .. .     | 718                                | 10                       | 80                     | 29          | 119                       | 837                                | 827                                 | 236                       | 1,063   | (a) 105                              | 2,005                           |
| 16. Sea Lake .. .. .     | 1,117                              | 1                        | 229                    | 44          | 274                       | 1,391                              | 369                                 | 98                        | 467     | (a) 129                              | 1,987                           |
| 17. Ultima .. .. .       | ..                                 | 14                       | 17                     | 10          | 41                        | 41                                 | ..                                  | 157                       | 157     | (a) 10                               | 208                             |
| 18. Watchem .. .. .      | ..                                 | 4                        | 12                     | 12          | 28                        | 28                                 | ..                                  | 128                       | 128     | ..                                   | 156                             |
| 19. Wonthaggi .. .. .    | 867                                | 71                       | 187                    | 217         | 475                       | 1,342                              | 5,736                               | 2,451                     | 8,187   | (b) 1,000                            | 10,529                          |
| 20. Woomelang .. .. .    | 93                                 | 77                       | 70                     | 44          | 191                       | 284                                | 234                                 | 344                       | 578     | (a) 20                               | 882                             |
| 21. Wycheproof .. .. .   | 1,474                              | 2                        | 154                    | 39          | 195                       | 1,669                              | 836                                 | 203                       | 1,039   | (a) 134                              | 2,842                           |
|                          | 13,389                             | 516                      | 2,242                  | 900         | 3,658                     | 17,047                             | 17,834                              | 7,617                     | 25,451  | 3,997                                | 46,495                          |



## DISTRICTS HELD IN TRUST BY THE COMMISSION.

## AVOCA WATER TRUST.—BALANCE-SHEET.

STATEMENT OF RECEIPTS AND DISBURSEMENTS FOR THE YEAR ENDED 31ST DECEMBER, 1913.

*Revenue Account.*

| RECEIPTS.                       |        |    |    | DISBURSEMENTS.                   |        |    |    |
|---------------------------------|--------|----|----|----------------------------------|--------|----|----|
|                                 | £      | s. | d. |                                  | £      | s. | d. |
| Bank Balances from 1912 .. ..   | 255    | 8  | 3  | Interest on Loan .. ..           | 110    | 8  | 5  |
| Repayment of Loan Advance .. .. | 483    | 9  | 9  | Redemption of Loan .. ..         | 22     | 4  | 4  |
| Arrears of Rates .. ..          | 179    | 15 | 4  | Surveys New Channel System .. .. | 254    | 9  | 8  |
| Current Rate .. ..              | 408    | 16 | 10 | Maintenance and Repairs .. ..    | 119    | 2  | 0  |
| Interest on Rates .. ..         | 25     | 3  | 6  | Management .. ..                 | 41     | 14 | 2  |
| Sales of Water .. ..            | 101    | 9  | 6  | Rate Collector .. ..             | 56     | 6  | 8  |
| Overpaid Rates .. ..            | 0      | 3  | 2  | Bank Charges .. ..               | 2      | 19 | 9  |
|                                 |        |    |    | Bank Balances, 31/12/13 .. ..    | 847    | 1  | 4  |
| Total .. ..                     | £1,454 | 6  | 4  | Total .. ..                      | £1,454 | 6  | 4  |

*Statement of Assets and Liabilities.*

| LIABILITIES.                         |        |    |    | ASSETS.                       |        |    |    |
|--------------------------------------|--------|----|----|-------------------------------|--------|----|----|
|                                      | £      | s. | d. |                               | £      | s. | d. |
| Treasurer of Victoria—Loan .. ..     | 5,498  | 18 | 4  | Works at Cost .. ..           | 8,709  | 5  | 0  |
| Treasurer of Victoria—Interest .. .. | 109    | 19 | 7  | Less Amount                   |        |    |    |
| Rates Overpaid .. ..                 | 0      | 10 | 4  | Written Off,                  |        |    |    |
| Balance—General Account .. ..        | 1,552  | 6  | 4  | Act No.                       |        |    |    |
|                                      |        |    |    | 1625 .. ..                    | 2,494  | 0  | 0  |
|                                      |        |    |    | Repayment of                  |        |    |    |
|                                      |        |    |    | Loan .. ..                    | 124    | 5  | 6  |
|                                      |        |    |    |                               | 2,618  | 5  | 6  |
| Total .. ..                          | £7,161 | 14 | 7  |                               |        |    |    |
|                                      |        |    |    | Arrears of Rates .. ..        | 223    | 13 | 9  |
|                                      |        |    |    | Bank Balances, 31/12/13 .. .. | 847    | 1  | 4  |
|                                      |        |    |    | Total .. ..                   | £7,161 | 14 | 7  |

*Statement of Rates.*

|                         | £    | s. | d. |                                       | £    | s. | d. |
|-------------------------|------|----|----|---------------------------------------|------|----|----|
| Current Rate .. ..      | 555  | 15 | 8  | Current Rates Collected .. ..         | 408  | 16 | 10 |
| Arrears from 1912 .. .. | 256  | 10 | 3  | Arrears of Rates Collected .. ..      | 179  | 15 | 4  |
|                         |      |    |    | Arrears carried forward to 1914 .. .. | 223  | 13 | 9  |
| Total .. ..             | £812 | 5  | 11 | Total .. ..                           | £812 | 5  | 11 |

DISTRICTS HELD IN TRUST BY THE COMMISSION—*continued.*

## AVOCA WATER TRUST.—QUAMBATOOK URBAN DISTRICT.—BALANCE-SHEET.

STATEMENT OF RECEIPTS AND DISBURSEMENTS FOR THE YEAR ENDED 31ST DECEMBER, 1913.

*Revenue Account.*

| RECEIPTS.               |     |       | DISBURSEMENTS.               |     |       |
|-------------------------|-----|-------|------------------------------|-----|-------|
|                         | £   | s. d. |                              | £   | s. d. |
| Arrears of Rates .. ..  | 41  | 13 8  | Interest on Loan .. ..       | 23  | 14 11 |
| Interest on Rates .. .. | 6   | 2 7   | Redemption of Loan .. ..     | 2   | 19 5  |
|                         |     |       | Management .. ..             | 1   | 1 0   |
|                         |     |       | Rate Collector .. ..         | 4   | 6 8   |
|                         |     |       | Bank Balance, 31/12/13 .. .. | 15  | 14 3  |
| Total .. ..             | £47 | 16 3  |                              | £47 | 16 3  |

*Loan Statement.*

| RECEIPTS.                   |        |       | DISBURSEMENTS.           |        |       |
|-----------------------------|--------|-------|--------------------------|--------|-------|
|                             | £      | s. d. |                          | £      | s. d. |
| Treasurer of Victoria .. .. | 3,402  | 9 1   | Earthen Storage .. ..    | 976    | 5 5   |
|                             |        |       | Concrete Standpipe .. .. | 747    | 11 11 |
|                             |        |       | Reticulation .. ..       | 1,185  | 7 1   |
|                             |        |       | Windmills .. ..          | 301    | 5 4   |
|                             |        |       | Pumping Plant .. ..      | 148    | 6 9   |
|                             |        |       | Contingencies .. ..      | 43     | 12 7  |
| Total .. ..                 | £3,402 | 9 1   | Total .. ..              | £3,402 | 9 1   |

*Statement of Assets and Liabilities.*

| LIABILITIES.                         |        |       | ASSETS.                      |        |       |
|--------------------------------------|--------|-------|------------------------------|--------|-------|
|                                      | £      | s. d. |                              | £      | s. d. |
| Treasurer of Victoria—Loan .. ..     | 3,399  | 9 8   | Works at Cost .. ..          | 3,402  | 9 1   |
| Treasurer of Victoria—Interest .. .. | 61     | 16 4  | Arrears of Rates .. ..       | 127    | 2 3   |
| Balance—General Account .. ..        | 83     | 19 7  | Bank Balance, 31/12/13 .. .. | 15     | 14 3  |
| Total .. ..                          | £3,545 | 5 7   | Total .. ..                  | £3,545 | 5 7   |

*Statement of Rates.*

|                         | £    | s. d. |                                       | £    | s. d. |
|-------------------------|------|-------|---------------------------------------|------|-------|
| Current Rate .. ..      | 105  | 19 6  | Arrears of Rates Collected .. ..      | 41   | 13 8  |
| Arrears from 1912 .. .. | 62   | 16 5  | Arrears carried forward to 1914 .. .. | 127  | 2 3   |
| Total .. ..             | £168 | 15 11 | Total .. ..                           | £168 | 15 11 |

DISTRICTS HELD IN TRUST BY THE COMMISSION—*continued.*

## CARRUM WATERWORKS TRUST.—BALANCE-SHEET.

STATEMENT OF RECEIPTS AND DISBURSEMENTS FOR THE YEAR ENDED 31ST DECEMBER, 1913.

*Revenue Account.*

| RECEIPTS.                         |        |    |    | DISBURSEMENTS. |    |    |                          |        |    |     |   |   |
|-----------------------------------|--------|----|----|----------------|----|----|--------------------------|--------|----|-----|---|---|
|                                   | £      | s. | d. | £              | s. | d. | £                        | s.     | d. |     |   |   |
| Bank Balance from 1912            | 586    | 9  | 5  |                |    |    | Interest on Loan         | 667    | 17 | 3   |   |   |
| Cash in hand from 1912            | 2      | 10 | 1  |                |    |    | Redemption of Loan       | 139    | 17 | 9   |   |   |
|                                   |        |    |    | 588            | 19 | 6  | Maintenance and Repairs  | 839    | 18 | 10  |   |   |
| Arrears of Rates                  |        |    |    | 440            | 14 | 2  | Rate Collector           | 81     | 5  | 0   |   |   |
| Current Rate                      |        |    |    | 1,333          | 18 | 9  | Management               | 56     | 10 | 8   |   |   |
| Rates Overpaid                    |        |    |    | 3              | 6  | 6  | Overpaid Rates Refunded  | 0      | 15 | 6   |   |   |
| Interest on Rates                 |        |    |    | 34             | 2  | 2  | Bank Charges             | 3      | 1  | 5   |   |   |
| Interest on Flood Protection Fund |        |    |    | 19             | 12 | 8  | Cash in hand             | 19     | 12 | 8   |   |   |
|                                   |        |    |    |                |    |    | Bank Balance, 31/12/1913 | 611    | 14 | 8   |   |   |
|                                   |        |    |    |                |    |    |                          |        |    | 631 | 7 | 4 |
| Total                             | £2,420 | 13 | 9  |                |    |    | Total                    | £2,420 | 13 | 9   |   |   |

*Special Works Account.*

| RECEIPTS.              |     |    |    | DISBURSEMENTS.           |     |    |    |
|------------------------|-----|----|----|--------------------------|-----|----|----|
|                        | £   | s. | d. |                          | £   | s. | d. |
| Bank Balance from 1912 | 14  | 3  | 3  | Bank Charges             | 0   | 10 | 0  |
| Arrears of Rates       | 51  | 0  | 3  | Bank Balance, 31/12/1913 | 64  | 13 | 6  |
| Total                  | £65 | 3  | 6  | Total                    | £65 | 3  | 6  |

*Statement of Assets and Liabilities.*

| LIABILITIES.                       |         |    |    | ASSETS.                         |         |    |        |    |     |     |   |   |
|------------------------------------|---------|----|----|---------------------------------|---------|----|--------|----|-----|-----|---|---|
|                                    | £       | s. | d. |                                 | £       | s. | d.     |    |     |     |   |   |
| Treasurer of Victoria—Loan         | 16,591  | 10 | 10 | Works at Cost                   | 25,732  | 9  | 6      |    |     |     |   |   |
| Overpaid Rates                     | 3       | 6  | 6  | Less Amount Written Off         | 7,732   | 0  | 0      |    |     |     |   |   |
| Balance, General Account           | 3,248   | 15 | 4  |                                 |         |    | 18,000 | 9  | 6   |     |   |   |
|                                    |         |    |    | Arrears of Rates                |         |    | 461    | 15 | 10  |     |   |   |
|                                    |         |    |    | Flood Protection Fund—          |         |    |        |    |     |     |   |   |
|                                    |         |    |    | Government Stock                |         |    | 750    | 0  | 0   |     |   |   |
|                                    |         |    |    | Cash in hand                    |         |    | 19     | 12 | 8   |     |   |   |
|                                    |         |    |    | Bank Balance, 31/12/1913        | 611     | 14 | 8      |    |     |     |   |   |
|                                    |         |    |    |                                 |         |    |        |    | 631 | 7   | 4 |   |
| Total                              | £19,843 | 12 | 8  | Total                           | £19,843 | 12 | 8      |    |     |     |   |   |
| Special Works—                     | £       | s. | d. | Special Works—                  | £       | s. | d.     | £  | s.  | d.  |   |   |
| Balance of Works to be carried out | 1,075   | 5  | 6  | Amount of Special Rate          | 8,144   | 15 | 6      |    |     |     |   |   |
|                                    |         |    |    | Less Amount Received            | 8,034   | 11 | 0      |    |     | 110 | 4 | 6 |
|                                    |         |    |    |                                 |         |    |        |    |     | 900 | 7 | 6 |
|                                    |         |    |    | Balance in Trust Fund, Treasury |         |    | 64     | 13 | 6   |     |   |   |
|                                    |         |    |    | Bank Balance, 31/12/1913        |         |    |        |    |     |     |   |   |
| Total                              | £1,075  | 5  | 6  | Total                           | £1,075  | 5  | 6      |    |     |     |   |   |

*Statement of Rates.*

|                            | £      | s. | d. |                                 | £      | s. | d. |
|----------------------------|--------|----|----|---------------------------------|--------|----|----|
| Current Rate               | 1,576  | 18 | 6  | Current Rate Collected          | 1,333  | 18 | 9  |
| Arrears of Rates from 1912 | 672    | 4  | 3  | Arrears of Rates Collected      | 440    | 14 | 2  |
|                            |        |    |    | Rates Written Off               | 12     | 14 | 0  |
|                            |        |    |    | Arrears carried forward to 1914 | 461    | 15 | 10 |
| Total                      | £2,249 | 2  | 9  | Total                           | £2,249 | 2  | 9  |

*Special Works Rate.*

|                   | £   | s. | d. |                                 | £   | s. | d. |
|-------------------|-----|----|----|---------------------------------|-----|----|----|
| Arrears from 1912 | 161 | 4  | 9  | Amount Collected in 1913        | 51  | 0  | 3  |
|                   |     |    |    | Arrears carried forward to 1914 | 110 | 4  | 6  |
| Total             | 161 | 4  | 9  | Total                           | 161 | 4  | 9  |

DISTRICTS HELD IN TRUST BY THE COMMISSION—*continued.*

## LODDON UNITED WATERWORKS TRUST.—BALANCE-SHEET.

## STATEMENT OF RECEIPTS AND DISBURSEMENTS FOR THE YEAR ENDED 31ST DECEMBER, 1913.

*Revenue Account.*

| RECEIPTS.              |    |    |               | DISBURSEMENTS. |          |                         |    |    |               |          |          |
|------------------------|----|----|---------------|----------------|----------|-------------------------|----|----|---------------|----------|----------|
|                        |    |    |               | £              | s.       | d.                      | £  | s. | d.            |          |          |
| Bank Balance from 1912 | .. | .. | 161           | 6              | 7        | Interest on Loan        | .. | .. | 724           | 2        | 9        |
| Arrears of Rates       | .. | .. | 179           | 4              | 7        | Redemption of Loan      | .. | .. | 158           | 12       | 7        |
| Current Rate           | .. | .. | 2,257         | 16             | 2        | Maintenance and Repairs | .. | .. | 398           | 1        | 0        |
| Interest on Rates      | .. | .. | 21            | 7              | 7        | Management              | .. | .. | 74            | 9        | 7        |
| Sales of Water         | .. | .. | 3             | 17             | 6        | Bank Balance, 31/12/13  | .. | .. | 1,274         | 1        | 4        |
| Rates Overpaid         | .. | .. | 5             | 4              | 10       |                         |    |    |               |          |          |
| Bank Over-Payment      | .. | .. | 0             | 10             | 0        |                         |    |    |               |          |          |
| <b>Total</b>           | .. | .. | <b>£2,629</b> | <b>7</b>       | <b>3</b> | <b>Total</b>            | .. | .. | <b>£2,629</b> | <b>7</b> | <b>3</b> |

*Statement of Assets and Liabilities.*

| LIABILITIES.               |    |    |                | ASSETS.  |          |                        |    |    |                |          |          |
|----------------------------|----|----|----------------|----------|----------|------------------------|----|----|----------------|----------|----------|
|                            |    |    |                | £        | s.       | d.                     | £  | s. | d.             |          |          |
| Treasurer of Victoria—Loan | .. | .. | 17,984         | 4        | 3        | Works at Cost          | .. | .. | 19,617         | 4        | 9        |
| Overpaid Rates             | .. | .. | 7              | 9        | 7        | Arrears of Rates       | .. | .. | 279            | 4        | 2        |
| Bank Over-Payment          | .. | .. | 0              | 10       | 0        | Sales of Water         | .. | .. | 57             | 18       | 6        |
| Balance, General Account   | .. | .. | 3,236          | 4        | 11       | Bank Balance, 31/12/13 | .. | .. | 1,274          | 1        | 4        |
| <b>Total</b>               | .. | .. | <b>£21,228</b> | <b>8</b> | <b>9</b> | <b>Total</b>           | .. | .. | <b>£21,228</b> | <b>8</b> | <b>9</b> |

*Statement of Rates.*

|                   |    |    |               | £         | s.       | d.                              |    |    |               |           | £        | s. | d. |  |
|-------------------|----|----|---------------|-----------|----------|---------------------------------|----|----|---------------|-----------|----------|----|----|--|
| Current Rate      | .. | .. | 2,440         | 8         | 6        | Current Rate Collected          | .. | .. | 2,257         | 16        | 2        |    |    |  |
| Arrears from 1912 | .. | .. | 282           | 10        | 6        | Arrears of Rates Collected      | .. | .. | 179           | 4         | 7        |    |    |  |
|                   |    |    |               |           |          | Rates Written Off               | .. | .. | 6             | 14        | 1        |    |    |  |
|                   |    |    |               |           |          | Arrears carried forward to 1914 | .. | .. | 279           | 4         | 2        |    |    |  |
| <b>Total</b>      | .. | .. | <b>£2,722</b> | <b>19</b> | <b>0</b> | <b>Total</b>                    | .. | .. | <b>£2,722</b> | <b>19</b> | <b>0</b> |    |    |  |

## LOAN EXPENDITURE.

STATEMENT OF LOAN EXPENDITURE DURING THE YEAR ENDED 30TH JUNE, 1914.

| Name.  | Loans Application Act No. 2431. |    |    | Loans Application Act No. 2503 and other Advances. |    |    | Total.  |    |    |
|--|---------------------------------|----|----|--|----|----|---------|----|----|
|  | £                               | s. | d. | £  | s. | d. | £       | s. | d. |
| <i>Free Headworks.</i>   |                                 |    |    |  |    |    |         |    |    |
| 1. Goulburn River Works (Waranga Reservoir) .. ..                            | 1,068                           | 8  | 0  | 1,053  | 16 | 8  | 2,122   | 4  | 8  |
| 2. Kow Swamp Works .. ..   | 473                             | 1  | 3  | 681  | 0  | 4  | 1,154   | 1  | 7  |
| 3. Loddon River Works (Laanecoorie) .. ..                                    | ..                              | .. | .. | 45   | 8  | 2  | 45      | 8  | 2  |
| <i>Waterworks Districts.</i>   |                                 |    |    |  |    |    |         |    |    |
| 4. Birchip, Sea Lake, Tyrrell, and Wycheproof .. ..                          | 2,716                           | 10 | 6  | 15,499   | 9  | 11 | 18,216  | 0  | 5  |
| 5. Karkaroc .. ..  | 1,784                           | 3  | 7  | 6,031  | 6  | 1  | 7,815   | 9  | 8  |
| 6. Kerang North-West Lakes .. ..   | 229                             | 11 | 3  | 1,298  | 0  | 2  | 1,527   | 11 | 5  |
| 7. Long Lake .. ..   | 395                             | 14 | 11 | 396  | 12 | 0  | 792     | 6  | 11 |
| 8. Tyntynder .. ..   | 520                             | 15 | 2  | 7,546  | 6  | 11 | 8,067   | 2  | 1  |
| 9. Walpeup East .. ..  | 143                             | 3  | 4  | 2,819  | 1  | 9  | 2,962   | 5  | 1  |
| 10. Walpeup West .. ..   | 345                             | 15 | 0  | 1,161  | 15 | 4  | 1,507   | 10 | 4  |
| 11. Western Wimmera .. ..  | 724                             | 5  | 2  | 1,049  | 16 | 5  | 1,774   | 1  | 7  |
| 12. Wimmera United .. ..   | 1,005                           | 6  | 10 | 2,319  | 1  | 11 | 3,324   | 8  | 9  |
| 13. Wimmera Main Channels .. ..  | 2,705                           | 5  | 6  | 6,138  | 18 | 2  | 8,844   | 3  | 8  |
| 14. Yelta .. ..  | 16                              | 4  | 11 | 217  | 18 | 7  | 234     | 3  | 6  |
| <i>Towns.</i>  |                                 |    |    |  |    |    |         |    |    |
| 15. Bacchus Marsh .. ..  | 13                              | 10 | 9  | 192  | 13 | 1  | 206     | 3  | 10 |
| 16. Berrillock .. ..   | 124                             | 2  | 2  | 885  | 18 | 7  | 1,010   | 0  | 9  |
| 17. Beulah .. ..   | ..                              | .. | .. | 56   | 8  | 3  | 56      | 8  | 3  |
| 18. Birchip .. ..  | 19                              | 6  | 9  | 308  | 3  | 3  | 327     | 10 | 0  |
| 19. Boga .. ..   | 2                               | 13 | 9  | 15   | 13 | 8  | 18      | 7  | 5  |
| 20. Cohuna .. ..   | ..                              | .. | .. | 55   | 10 | 8  | 55      | 10 | 8  |
| 21. Coliban .. ..  | 95                              | 7  | 4  | 5,917  | 6  | 9  | 6,012   | 14 | 1  |
| 22. Dimboola .. ..   | 11                              | 19 | 5  | ..   | .. | .. | 11      | 19 | 5  |
| 23. Hopetoun .. ..   | 17                              | 14 | 4  | 421  | 19 | 5  | 439     | 13 | 9  |
| 24. Jeparit .. ..  | 0                               | 6  | 10 | 2  | 4  | 9  | 2       | 11 | 7  |
| 25. Kaneira .. ..  | 19                              | 14 | 11 | 1,212  | 15 | 5  | 1,232   | 10 | 4  |
| 26. Koondrook .. ..  | 2                               | 10 | 6  | 8  | 12 | 6  | 11      | 3  | 0  |
| 27. Lascelles .. ..  | ..                              | .. | .. | 11   | 0  | 0  | 11      | 0  | 0  |
| 28. Minyip .. ..   | 61                              | 0  | 10 | 195  | 7  | 6  | 256     | 8  | 4  |
| 29. Rainbow .. ..  | ..                              | .. | .. | 12   | 6  | 8  | 12      | 6  | 8  |
| 30. Rупanyup .. ..   | 31                              | 11 | 11 | 133  | 8  | 5  | 165     | 0  | 4  |
| 31. Sea Lake .. ..   | 47                              | 12 | 2  | 318  | 2  | 11 | 365     | 15 | 1  |
| 32. Ultima .. ..   | 130                             | 10 | 0  | 103  | 12 | 5  | 234     | 2  | 5  |
| 33. Watchem .. ..  | 873                             | 11 | 11 | 1,404  | 6  | 5  | 2,277   | 18 | 4  |
| 34. Werribee .. ..   | 1,022                           | 6  | 9  | 4,973  | 9  | 9  | 5,995   | 16 | 6  |
| 35. Wonthaggi .. ..  | 19                              | 2  | 0  | 413  | 11 | 6  | 432     | 13 | 6  |
| 36. Woomelang .. ..  | 222                             | 1  | 2  | 293  | 10 | 2  | 515     | 11 | 4  |
| 37. Wycheproof .. ..   | 4                               | 16 | 0  | 12   | 18 | 4  | 17      | 14 | 4  |
| <i>Irrigation and Water Supply Districts.</i>                                |                                 |    |    |  |    |    |         |    |    |
| 38. Bacchus Marsh and Werribee Estate .. ..                                  | 4,200                           | 12 | 1  | 12,135   | 7  | 8  | 16,335  | 19 | 9  |
| 39. Boort .. ..  | 30                              | 14 | 11 | 1,358  | 17 | 4  | 1,389   | 12 | 3  |
| 40. Campaspe .. ..   | ..                              | .. | .. | 246  | 14 | 5  | 246     | 14 | 5  |
| 41. Cohuna .. ..   | 12                              | 3  | 3  | 5,063  | 17 | 0  | 5,076   | 0  | 3  |
| 42. Deakin .. ..   | 11                              | 17 | 0  | 292  | 0  | 6  | 303     | 17 | 6  |
| 43. Dingee .. ..   | 1,292                           | 16 | 10 | 3,193  | 9  | 4  | 4,486   | 6  | 2  |
| 44. Gannawarra .. ..   | 291                             | 0  | 11 | 3,032  | 14 | 7  | 3,323   | 15 | 6  |
| 45. Kerang .. ..   | 239                             | 14 | 9  | 207  | 19 | 2  | 447     | 13 | 11 |
| 46. Koondrook .. ..  | 698                             | 19 | 3  | 3,536  | 1  | 1  | 4,235   | 0  | 4  |
| 47. Rochester .. ..  | 3,459                           | 16 | 11 | 11,419   | 6  | 7  | 14,879  | 3  | 6  |
| 48. Rodney .. ..   | 533                             | 12 | 5  | 7,828  | 8  | 10 | 8,362   | 1  | 3  |
| 49. Shepparton .. ..   | 1,196                           | 18 | 1  | 4,667  | 3  | 5  | 5,864   | 1  | 6  |
| 50. Swan Hill .. ..  | 114                             | 18 | 3  | 2,249  | 14 | 5  | 2,364   | 12 | 8  |
| 51. Tragowel Plains .. ..  | 1,622                           | 6  | 4  | 8,042  | 10 | 10 | 9,664   | 17 | 2  |
| 52. Tongala .. ..  | 751                             | 11 | 4  | 2,723  | 0  | 5  | 3,474   | 11 | 9  |
| 53. Goulburn Main Channels .. ..   | 1,587                           | 10 | 2  | 6,466  | 11 | 7  | 8,054   | 1  | 9  |
| <i>Irrigation Areas.</i>   |                                 |    |    |  |    |    |         |    |    |
| 54. Merbein .. ..  | 1,802                           | 15 | 6  | 4,572  | 4  | 9  | 6,375   | 0  | 3  |
| 55. Nyah .. ..   | 88                              | 3  | 9  | 510  | 11 | 0  | 598     | 14 | 9  |
| <i>Miscellaneous.</i>  |                                 |    |    |  |    |    |         |    |    |
| 56. Goulburn Levees .. ..  | 1,542                           | 10 | 10 | 4,222  | 14 | 11 | 5,765   | 5  | 9  |
| 57. Goulburn Storages .. ..  | 540                             | 17 | 4  | 1,095  | 4  | 1  | 1,636   | 1  | 5  |
| 58. Koo-wee-rup Drainage .. ..   | 127                             | 0  | 8  | 625  | 1  | 1  | 752     | 1  | 9  |
| 59. Murray River—Torrumbarry Weir Site .. ..                                 | ..                              | .. | .. | 24   | 4  | 11 | 24      | 4  | 11 |
| 60. Murray River—Surveys, Narrung and Millewa .. ..                          | 192                             | 3  | 6  | 1,392  | 11 | 10 | 1,584   | 15 | 4  |
| 61. Mildura Railway Line—Construction of tanks on adjacent Crown Lands .. .. | ..                              | .. | .. | 6  | 2  | 0  | 6       | 2  | 0  |
| Total .. ..  | 35,186                          | 9  | 0  | 148,120  | 4  | 7  | 183,306 | 13 | 7  |

## STATEMENT OF EXPENDITURE DURING THE YEAR ENDED 30TH JUNE, 1914,

IN CONNEXION WITH

BORING FOR WATER, CONSTRUCTION OF PUBLIC AND FARMERS' TANKS, AND FORMING ROADS IN THE MALLEE.

This Expenditure was met either by the Lands Department or the Public Works Department.

|  | £       | s. | d. |
|--|---------|----|----|
| 1. Boring for Water .. ..              | 8,490   | 15 | 7  |
| 2. Mallee Tanks (Public Tanks) .. ..   | 7,083   | 5  | 9  |
| 3. Farmers' Tanks (Advances for) .. .. | 325     | 0  | 0  |
| 4. Clearing Roads .. ..                | 7,076   | 8  | 0  |
| Total .. ..                            | £22,975 | 9  | 4  |

## ESTIMATES.

Anticipated requirements to meet Disbursements by the Commission and Estimate of the moneys available from its Revenues to provide the same for the year ending 30th June, 1915.

## ESTIMATED DISBURSEMENTS.

| A.  |          |
|---|----------|
| Revenue Producing Works—  |          |
| Coliban District .. .. .  | £11,400  |
| Irrigation and Water Supply Districts .. ..   | 52,050   |
| Waterworks Districts .. .. .  | 27,925   |
| Drainage and Flood Protection Districts .. ..   | 750      |
| General Expenditure and Salaries (proportion) over £250 to be apportioned to above Districts ..   | 16,200   |
|   | £108,325 |
| B.  |          |
| Non-Revenue Producing Works—  |          |
| General Services—   |          |
| River Gaugings, Diversions from Streams, Surveys, New Projects, Boring for Water, Land Settlement, General Expenditure and Salaries (proportion) over £250.. .. . | £8,525   |
| Inter-State Conference on Murray Waters ..  | 100      |
| Irrigation Engineering Scholarships .. ..   | 400      |
| Loan Works, Services on Account defrayed from Votes   | 3,800    |
| Waterworks Trusts Administration .. .. .  | 1,600    |
|   | £14,425  |
| C.  |          |
| Non-Revenue Producing Works—  |          |
| Free Headworks—   |          |
| Goulburn-Waranga .. .. .  | £2,050   |
| Kow Swamp .. .. .   | 1,700    |
| Loddon River .. .. .  | 275      |
| North-West Lakes .. .. .  | 375      |
| Broken River .. .. .  | 325      |
| Lake Lonsdale .. .. .   | 400      |
| Lower Wimmera .. .. .   | 125      |
|   | £5,250   |
|   | £128,000 |

## ESTIMATED RECEIPTS.

|  |          |
|--|----------|
| Coliban District .. .. .   | £38,250  |
| Irrigation and Water Supply Districts .. .. .  | 84,000   |
| Waterworks Districts .. .. .   | 43,500   |
| Miscellaneous .. .. .  | 6,250    |
|  | £172,000 |
| Estimated amount available from Revenue Producing Works to meet interest .. .. .           | £63,675  |
| Less Expenditure as per "B" and "C" above on Non-revenue Producing Works .. .. .           | 19,675   |
|  | £44,000  |
| To which add Estimated Revenues from Other Authorities—                                    |          |
| Waterworks Trusts .. .. .  | £36,000  |
| Local Bodies .. .. .   | 21,500   |
|  | £57,500  |
| Total Estimated amount available from Revenues of all Authorities to meet Interest .. .. . | £101,500 |

## STATEMENT OF LOAN LIABILITY.

STATEMENT of the amount provided by the State to meet Interest on its Loan Expenditure for Works of Water Supply, both State Works of Water Supply and Works vested in Authorities other than the Commission; and of the sums paid from the revenues of the Commission, and from the moneys received from such other Authorities, to provide such Interest for the year ended 30th June, 1914:—

| Works.   | Loan Liability of State for Works of Water Supply at 30th June, 1914, exclusive of Melbourne Water Supply. |                         |               |  | Interest payable by State on Net Advances. | Total Interest of £270,721 debitable to— |  |                                   | Amount received from Revenues of all Authorities to meet Interest.                     |
|--|--|-------------------------|---------------|--|--|--|--|-----------------------------------|--|
|  | Total Advances, including Cost of Loan Flotation.  | Deduct Redemption Paid. | Net Advances. | (A.) Amounts Written Off. (B.) Free Head-works. (C.) Loans Unexpended. |  | Balance at Debit of Authorities.         | (A.) Written Off. (B.) Free Head-works. (C.) Loans Unexpended. | Commission and Other Authorities. |  |
| Waterworks Districts .. .. .   | £ 2,136,973  | £ 29,629                | £ 2,107,344   | £ 169,927  | £ 73,033                                   | £ 67,143                                 | £ 5,890  | £ 82,938                          | (after deducting £20,615 for non-revenue producing works including other State works). |
| Irrigation and Water Supply Districts .. .. .  | 1,537,751  | 12,827                  | 1,524,924     | 575,152  | 52,848                                     | 32,913                                   | 19,935   | 20,578                            |  |
| Goulburn Works (exclusive of Districts supplied are being debited with their proportion of Interest on this Expenditure) | 593,814  | 39                      | 593,775       | ..   | 20,578                                     | ..                                       | ..   | ..                                |  |
| Pyke's Creek and Werribee .. .. .  | 116,670  | ..                      | 116,670       | ..   | 4,044                                      | ..                                       | ..   | 4,044                             |  |
| Waterworks Trusts (including First Mildura) .. .. .  | 1,384,019  | 94,694                  | 1,289,325     | 327,409  | 44,684                                     | 961,916                                  | 11,348   | 33,336                            | £55,915 (after deducting £4,794 for Capitalized Interest)                              |
| Local Bodies (Municipalities) .. .. .  | 674,604  | 87,127                  | 587,477       | 163,760  | 20,360                                     | 423,717                                  | 5,676  | 14,684                            |  |
| Irrigation Trusts Abolished .. .. .  | 32,754   | 30                      | 32,724        | 32,724   | 1,134                                      | ..                                       | 1,134  | ..                                |  |
| Free Headworks .. .. .   | 1,238,976  | 420                     | 1,238,556     | 1,238,556  | 42,924                                     | ..                                       | 42,924   | ..                                |  |
| Free Grants to Local Authorities .. .. .   | 147,046  | ..                      | 147,046       | 147,046  | 5,097                                      | ..                                       | 5,097  | ..                                |  |
| Surveys, Exploratory, and Preliminary Works, including Purchase of Land reserved for Reservoirs .. .. .                  | 107,128  | ..                      | 107,128       | ..   | 3,713                                      | 107,128                                  | ..   | 3,713                             |  |
| Loan Moneys unexpended .. .. .   | 66,528   | ..                      | 66,528        | 66,528   | 2,306                                      | ..                                       | 2,306  | ..                                |  |
| Totals .. .. .   | 8,036,263  | 224,766                 | 7,811,497     | 2,721,102  | 270,721                                    | 5,090,395                                | 94,310   | 176,411                           | 138,853  |

Dated at the Office of the State Rivers and Water Supply Commission,  
Treasury Gardens, Melbourne, the 27th day of October, 1914.

ELWOOD MEAD, Chairman.

WM. CATTANACH, Commissioner.

J. S. DETHRIDGE, Commissioner.

M. NALLY, Secretary.